

# FOR LEASE

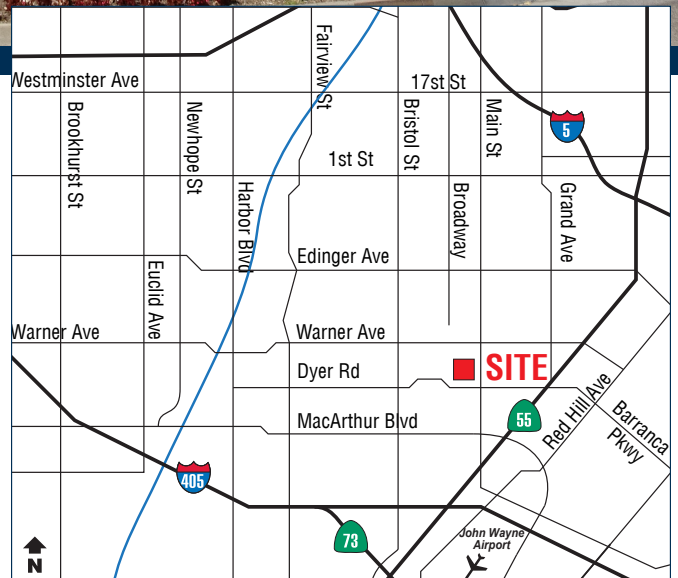
## ±3,762 SF Main & Dyer Business Park

2700 MAIN STREET, UNIT E | SANTA ANA | CA | 92707



### PROPERTY FEATURES

- ±3,762 Total Square Feet
- Main Street Frontage/Signage
- ±983 Square Feet of Office
- 2 Ground Level Loading Doors
- 2 Restrooms
- 15' Minimum Warehouse Clearance
- Desirable End Unit
- 3:1 Parking Ratio
- Excellent Freeway Access to the 55, 405, 73 and 5 Freeways



EXCLUSIVELY OFFERED BY:

## ***Voit***

REAL ESTATE SERVICES

**HAYDEN SOCCI, SIOR, CCIM**

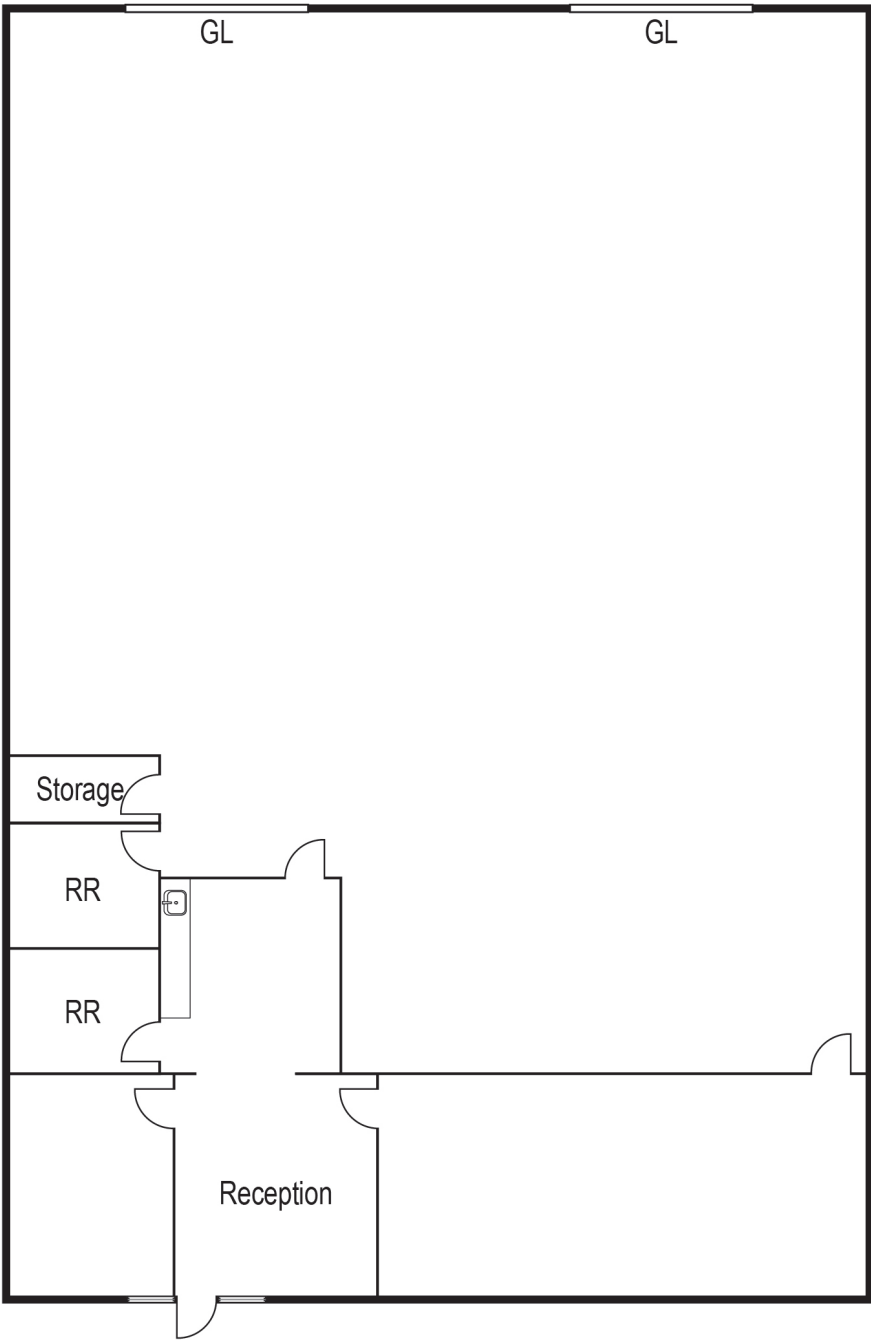
Senior Vice President | Partner

License #01705038

**(714) 935-2379**

hsocci@voitco.com

FLOOR PLAN



\*Please note floor plan is approximate and may not be to scale

EXCLUSIVELY OFFERED BY:

**Voit**

REAL ESTATE SERVICES

**HAYDEN SOCCI, SIOR, CCIM**

Senior Vice President | Partner

License #01705038

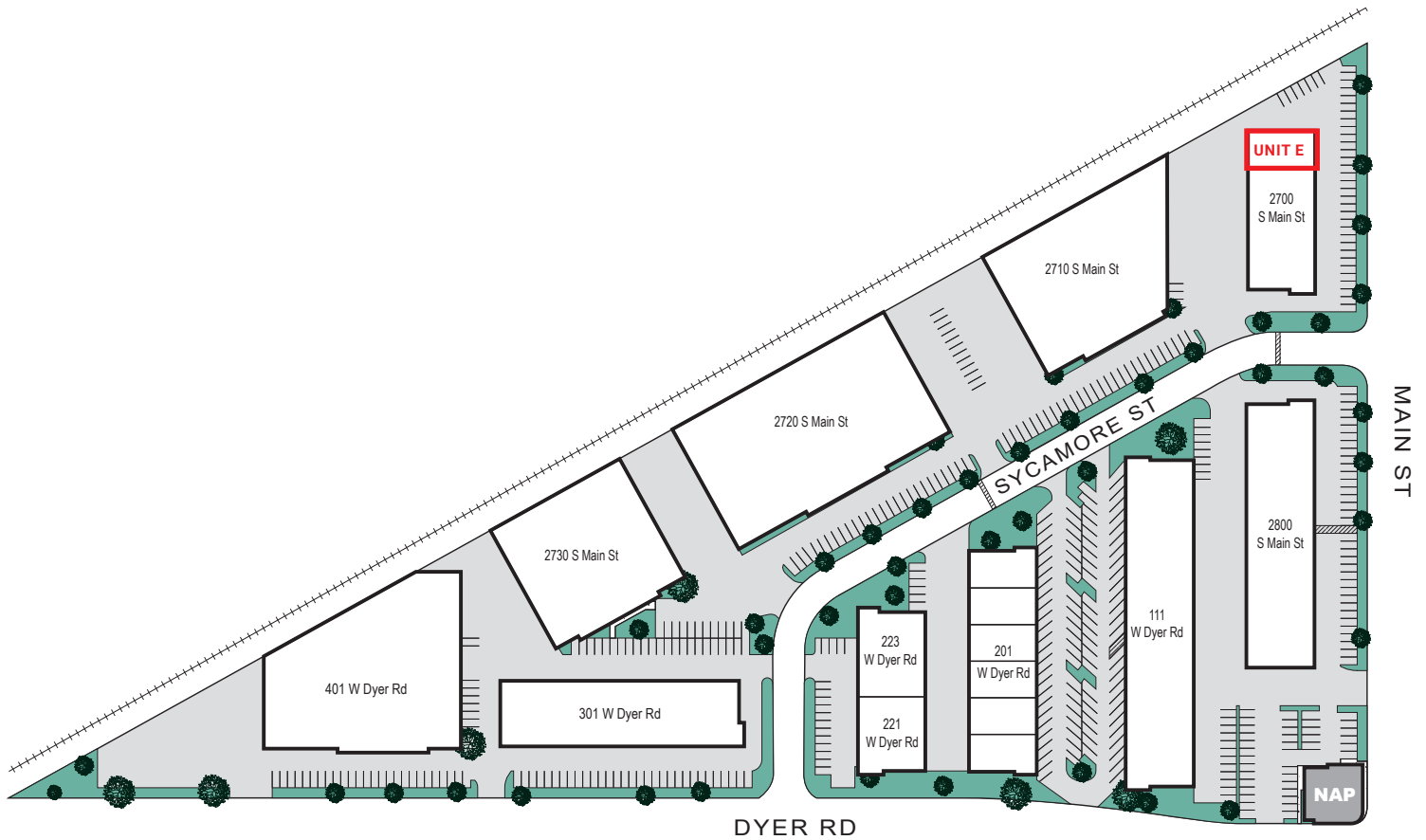
**(714) 935-2379**

hsocci@voitco.com



2700 MAIN STREET, UNIT E | SANTA ANA | CA | 92707

## SITE PLAN



\*Please note site plan is approximate and may not be to scale



EXCLUSIVELY OFFERED BY:

***Voit***

REAL ESTATE SERVICES

**HAYDEN SOCCI, SIOR, CCIM**

Senior Vice President | Partner

License #01705038

**(714) 935-2379**

hsocci@voitco.com

2400 E. Katella Ave., Ste. 750 | Anaheim, CA 92806 | [www.voitco.com](http://www.voitco.com)

The information contained herein has been obtained from sources we deem reliable. While we have no reason to doubt its accuracy, we do not guarantee it. Licensed as Real Estate Salespersons by the DRE. ©2025 Voit Real Estate Services, Inc. All Rights Reserved. License #01991785.