

Lodge-Ready on Hwy 33

Single-Family Home — Multi-Use Potential

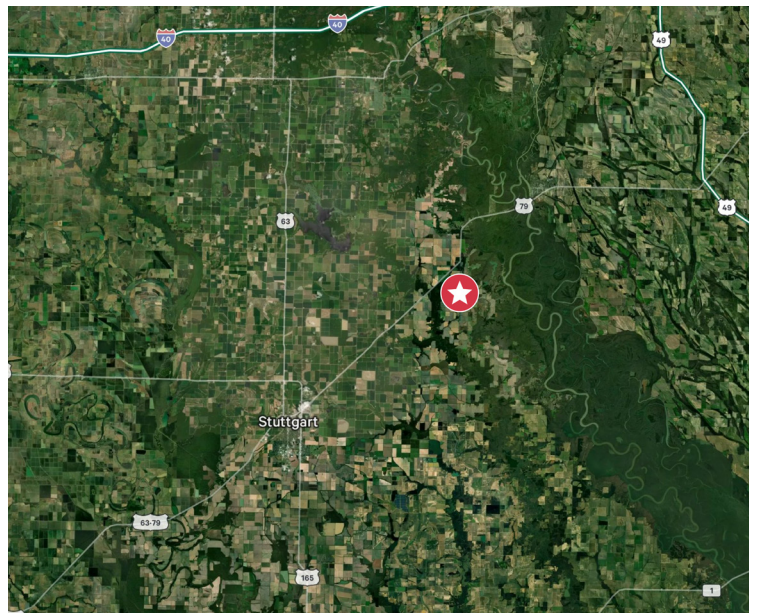
3401 HWY 33
Roe, AR 72134

1± Acres | 3BR/2BA Home with Space for 7-8 Future Bedrooms



Property Features

- + 2,468 SF
- + 3 Bed / 2 Bath
- + Slab build
- + Fantastic structural integrity
 - Cinder-block build
- + Central heat/air
- + Potential to turn into a large camp/lodge
- + Potential to create 7-8 bedrooms
- + 20x20 detached shop
- + Near the Dale Bumpers White River National Wildlife Refuge and other publicly accessible areas







Contact Us

Alex Rodgers

+1 501 920 2405

alex.rodgers@cbre.com

© 2026 CBRE, Inc. All rights reserved. This information has been obtained from sources believed reliable, but has not been verified for accuracy or completeness. You should conduct a careful, independent investigation of the property and verify all information. Any reliance on this information is solely at your own risk. CBRE and the CBRE logo are service marks of CBRE, Inc. All other marks displayed on this document are the property of their respective owners, and the use of such logos does not imply any affiliation with or endorsement of CBRE. Photos herein are the property of their respective owners. Use of these images without the express written consent of the owner is prohibited.