

409

FIGUEROA STREET

WILMINGTON, CALIFORNIA

LOS ANGELES

For Lease

9,570 SF

INSTITUTIONALLY MANAGED | FLEXIBILITY TO GROW IN A PORTFOLIO | DELIVERING UNPRECEDENTED CUSTOMER SERVICE

FOR INFORMATION, CONTACT:

Jim Abbott, Jr.
626-260-2232
CA License
#01870203



**REALTY
ADVISORY
GROUP, INC.**

LA/LB PORT Adjacent Drayage, Transload and Warehouse Facility

- Three Units Available for Lease: 9,570 SF, 9,520 SF, & 9,780 SF
- Nice Offices for Each Unit: 709 SF, 830 SF & 1,275 SF
- 2 Dock High for Units 415 & 439. 1 Dock High & 1 Ramp for 409
- 18' Minimum Clear Height
- 1000' from the LA Ports — West Basin, Yang Ming and TraPac
- Building Completely Refurbished in 2018
- Adjacent to the 110 Freeway on/off ramp at Harry Bridges

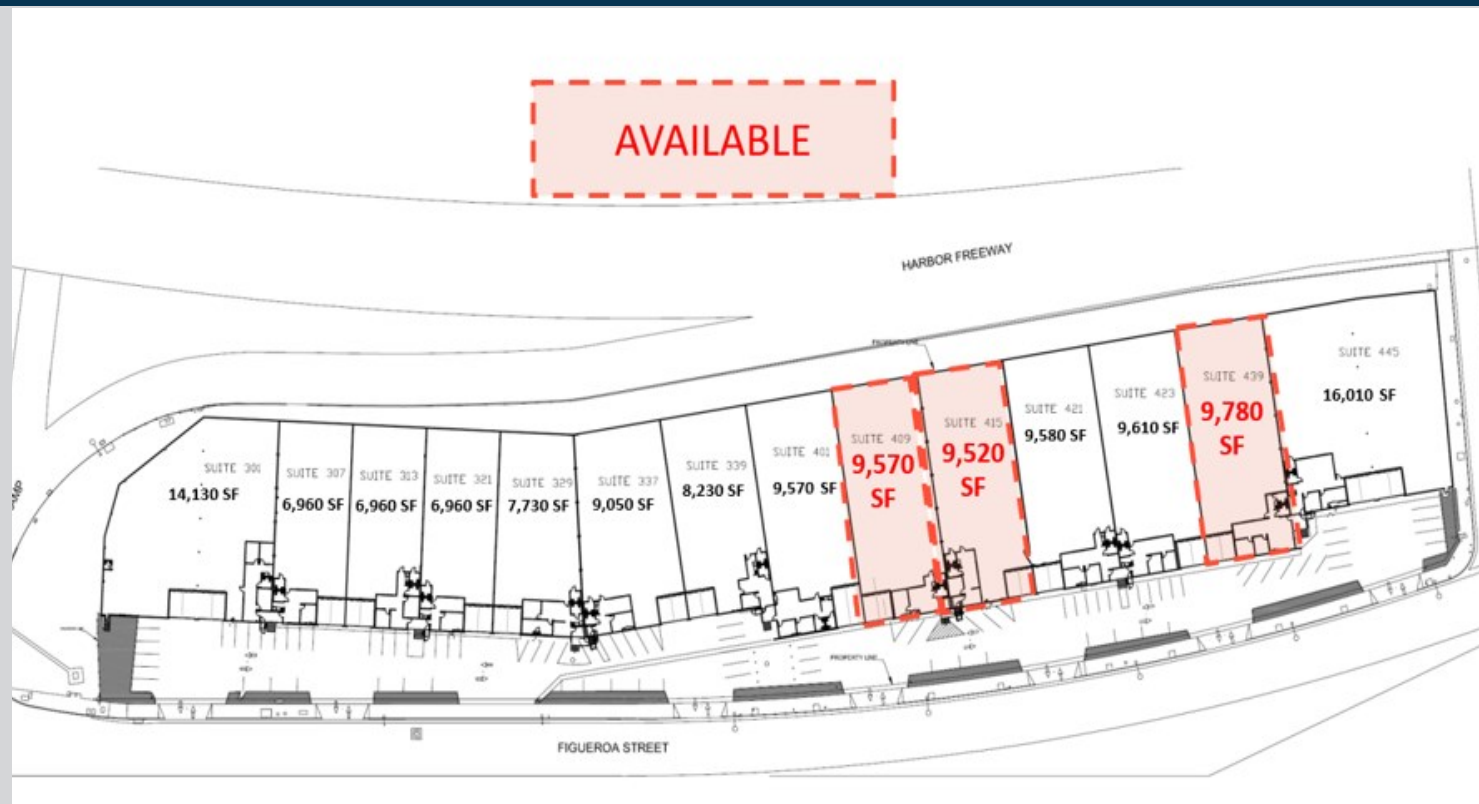


**Rexford
Industrial**

LA/LB Port Adjacent Drayage, Transload and Warehousing Facility— DH Loading in All Units

- Units 409 (9,570 SF), 415 (9,520 SF) AND 439 (9,780 SF) are available for Lease
- Nice Offices in Each Unit: 709 SF, 830 SF & 1,275 SF
- 2 DH (415 & 439) and 1 DH & 1 Ramp (409)
- 18' Minimum Clear Height
- 1000' from the LA Ports—West Basin and TraPac Terminals
- Building Completely Refurbished in 2018
- Adjacent to the 110 Freeway on/off ramp at Harry Bridges

For Lease



409 FIGUEROA STREET, WILMINGTON, CA 90744

LOS ANGELES

