

Bank/Office/Retail & Drive-Thrus

191 Plaza 9, Manalapan, NJ 07726

sitar
Realty Company

Worldwide Real Estate Services Since 1978

PROPERTY SUMMARY



PROPERTY DESCRIPTION

Bank/Office/Retail Building with 4 Drive-Thrus. Former Ocean First Bank.

PROPERTY HIGHLIGHTS

- Former bank with 4 drive-thru lanes
- Ample on-site parking
- Strong demographics
- Approximately 200 feet of frontage on Route 9
- Large pylon sign on Route 9
- Traffic count over 57,000 cars per day
- Zoning OP

LOCATION DESCRIPTION

On heavily traveled Route 9 South with easy access to Routes 33, 79, 18, 520 and the Garden State Parkway.

OFFERING SUMMARY

LEASE RATE:	Negotiable
AVAILABLE SF:	3,000 SF
LOT SIZE:	1.62 Acres
BUILDING SIZE:	3,000 SF

William Sitar Jr. | O: 732.623.2155 | C: 973.202.9119 | bsitarlaw@sitarcompany.com
Douglas Sitar | O: 732.623.2135 | C: 732.859.2144 | dsitar@sitarcompany.com

TCN
WORLDWIDE
REAL ESTATE SERVICES

ALL INFORMATION FURNISHED REGARDING PROPERTY FOR SALE, RENTAL OR FINANCING IS FROM SOURCES DEEMED RELIABLE, BUT NO WARRANTY OR REPRESENTATION IS MADE AS TO THE ACCURACY THEREOF AND SAME IS SUBMITTED SUBJECT TO ERRORS, OMISSIONS, CHANGE OF PRICE, RENTAL OR OTHER CONDITIONS, WITHDRAWAL WITHOUT NOTICE, AND TO ANY SPECIAL LISTING CONDITIONS IMPOSED BY OUR PRINCIPALS.

OFFICE/RETAIL BUILDING FOR LEASE

Bank/Office/Retail & Drive-Thrus

191 Plaza 9, Manalapan, NJ 07726

sitar
Realty Company

Worldwide Real Estate Services Since 1978

EXTERIOR PHOTOS



William Sitar Jr. | O: 732.623.2155 | C: 973.202.9119 | bsitarlaw@sitarcompany.com
Douglas Sitar | O: 732.623.2135 | C: 732.859.2144 | dsitar@sitarcompany.com

TCN
WORLDWIDE
REAL ESTATE SERVICES

ALL INFORMATION FURNISHED REGARDING PROPERTY FOR SALE, RENTAL OR FINANCING IS FROM SOURCES DEEMED RELIABLE, BUT NO WARRANTY OR REPRESENTATION IS MADE AS TO THE ACCURACY THEREOF AND SAME IS SUBMITTED SUBJECT TO ERRORS, OMISSIONS, CHANGE OF PRICE, RENTAL OR OTHER CONDITIONS, WITHDRAWAL WITHOUT NOTICE, AND TO ANY SPECIAL LISTING CONDITIONS IMPOSED BY OUR PRINCIPALS.

1481 Oak Tree Road, Iselin, NJ 08830 | 732.283.9000 | sitarcompany.com

OFFICE/RETAIL BUILDING FOR LEASE

Bank/Office/Retail & Drive-Thrus

191 Plaza 9, Manalapan, NJ 07726

sitar
Realty Company

Worldwide Real Estate Services Since 1978

INTERIOR PHOTOS



William Sitar Jr. | O: 732.623.2155 | C: 973.202.9119 | bsitarlaw@sitarcompany.com
Douglas Sitar | O: 732.623.2135 | C: 732.859.2144 | dsitar@sitarcompany.com

TCN
WORLDWIDE
REAL ESTATE SERVICES

ALL INFORMATION FURNISHED REGARDING PROPERTY FOR SALE, RENTAL OR FINANCING IS FROM SOURCES DEEMED RELIABLE, BUT NO WARRANTY OR REPRESENTATION IS MADE AS TO THE ACCURACY THEREOF AND SAME IS SUBMITTED SUBJECT TO ERRORS, OMISSIONS, CHANGE OF PRICE, RENTAL OR OTHER CONDITIONS, WITHDRAWAL WITHOUT NOTICE, AND TO ANY SPECIAL LISTING CONDITIONS IMPOSED BY OUR PRINCIPALS.

1481 Oak Tree Road, Iselin, NJ 08830 | 732.283.9000 | sitarcompany.com

OFFICE/RETAIL BUILDING FOR LEASE

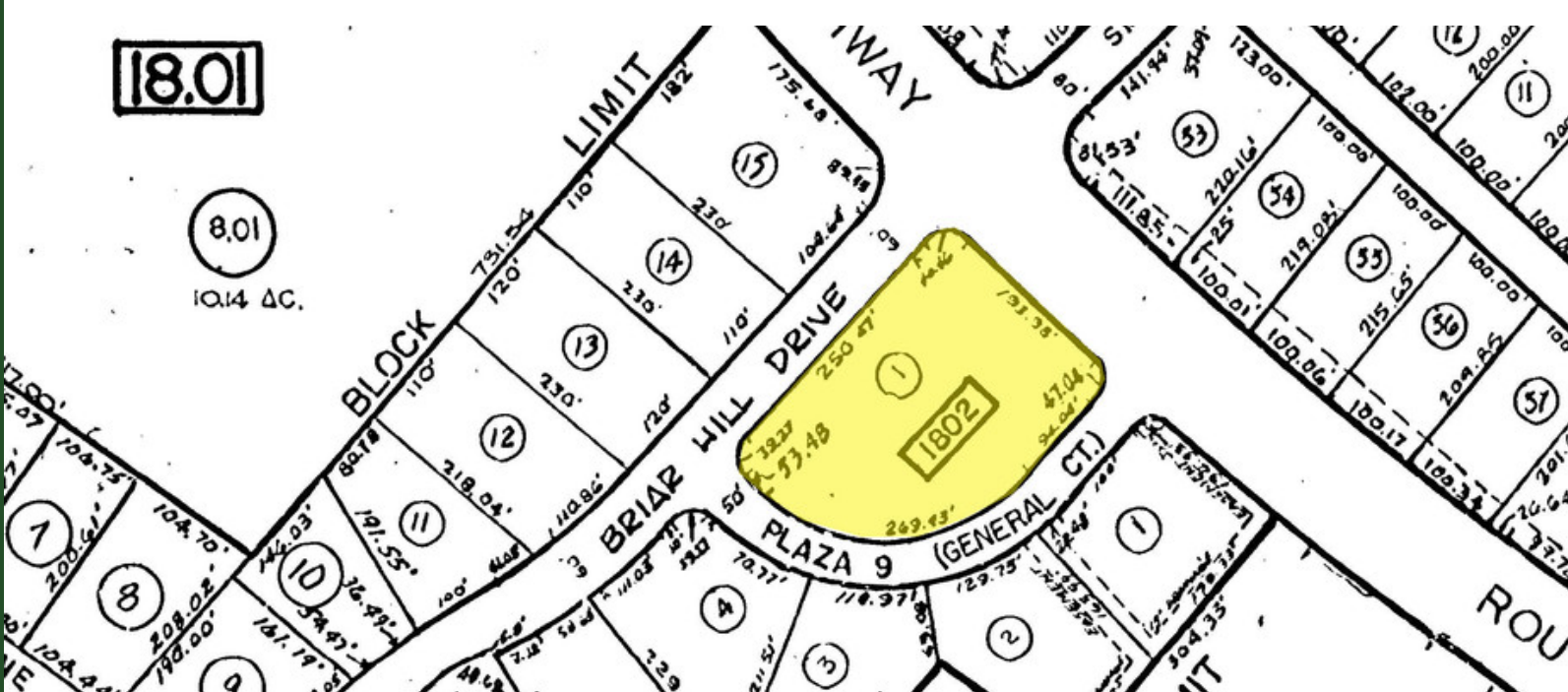
Bank/Office/Retail & Drive-Thrus

191 Plaza 9, Manalapan, NJ 07726

sitar
Realty Company

Worldwide Real Estate Services Since 1978

INTERIOR PHOTOS & TAX MAP



William Sitar Jr. | O: 732.623.2155 | C: 973.202.9119 | bsitarlaw@sitarcompany.com
Douglas Sitar | O: 732.623.2135 | C: 732.859.2144 | dsitar@sitarcompany.com

TCN
WORLDWIDE
REAL ESTATE SERVICES

ALL INFORMATION FURNISHED REGARDING PROPERTY FOR SALE, RENTAL OR FINANCING IS FROM SOURCES DEEMED RELIABLE, BUT NO WARRANTY OR REPRESENTATION IS MADE AS TO THE ACCURACY THEREOF AND SAME IS SUBMITTED SUBJECT TO ERRORS, OMISSIONS, CHANGE OF PRICE, RENTAL OR OTHER CONDITIONS, WITHDRAWAL WITHOUT NOTICE, AND TO ANY SPECIAL LISTING CONDITIONS IMPOSED BY OUR PRINCIPALS.

1481 Oak Tree Road, Iselin, NJ 08830 | 732.283.9000 | sitarcompany.com

OFFICE/RETAIL BUILDING FOR LEASE

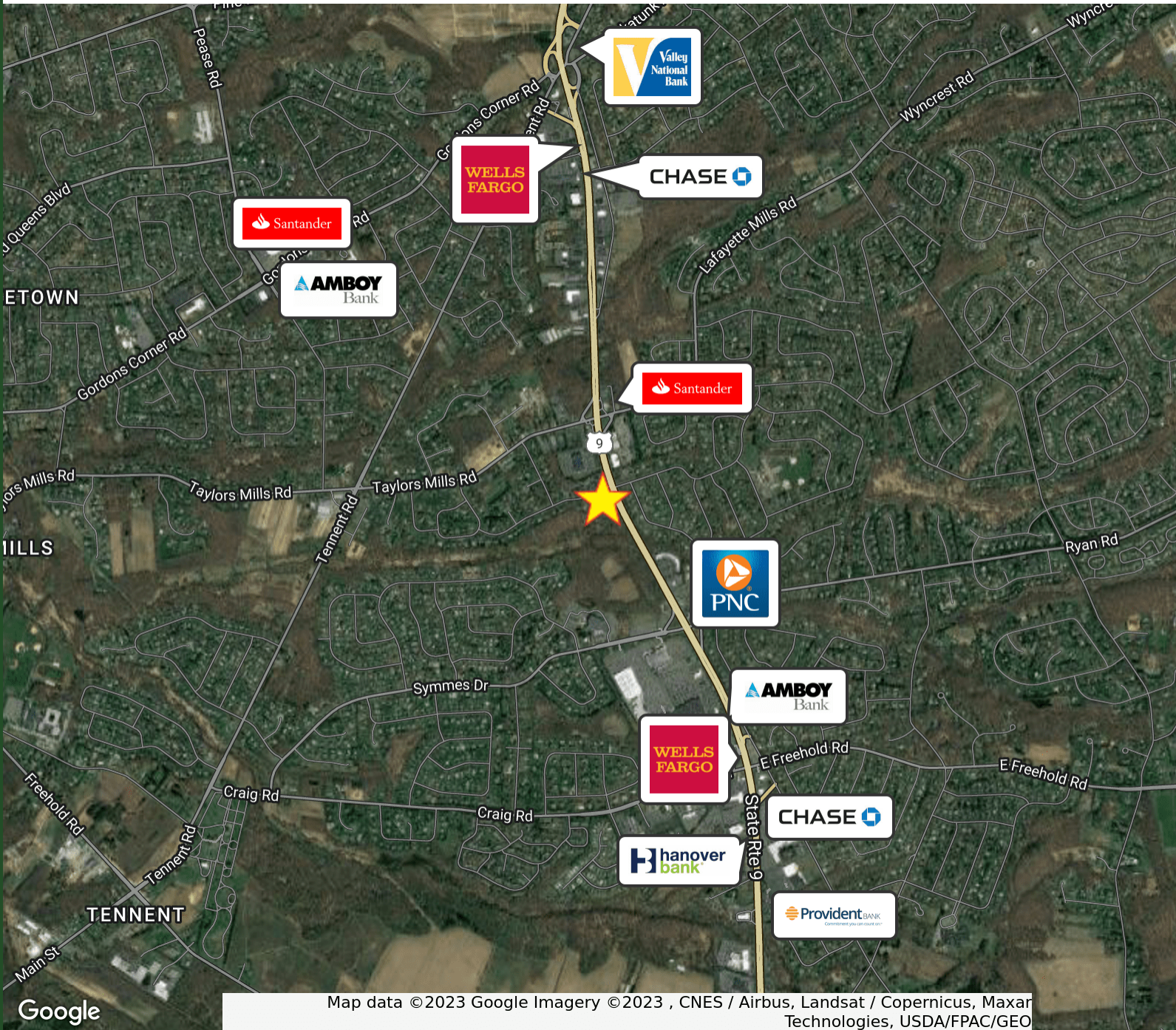
Bank/Office/Retail & Drive-Thrus

191 Plaza 9, Manalapan, NJ 07726



Worldwide Real Estate Services Since 1978

RETAILER MAP



Map data ©2023 Google Imagery ©2023 , CNES / Airbus, Landsat / Copernicus, Maxar Technologies, USDA/FPAC/Geo

William Sitar Jr. | O: 732.623.2155 | C: 973.202.9119 | bsitarlaw@sitarcompany.com
Douglas Sitar | O: 732.623.2135 | C: 732.859.2144 | dsitar@sitarcompany.com



ALL INFORMATION FURNISHED REGARDING PROPERTY FOR SALE, RENTAL OR FINANCING IS FROM SOURCES DEEMED RELIABLE, BUT NO WARRANTY OR REPRESENTATION IS MADE AS TO THE ACCURACY THEREOF AND SAME IS SUBMITTED SUBJECT TO ERRORS, OMISSIONS, CHANGE OF PRICE, RENTAL OR OTHER CONDITIONS, WITHDRAWAL WITHOUT NOTICE, AND TO ANY SPECIAL LISTING CONDITIONS IMPOSED BY OUR PRINCIPALS.

1481 Oak Tree Road, Iselin, NJ 08830 | 732.283.9000 | sitarcompany.com

OFFICE/RETAIL BUILDING FOR LEASE

Bank/Office/Retail & Drive-Thrus

191 Plaza 9, Manalapan, NJ 07726



Worldwide Real Estate Services Since 1978

LOCATION MAP



William Sitar Jr. | O: 732.623.2155 | C: 973.202.9119 | bsitarlaw@sitarcompany.com
Douglas Sitar | O: 732.623.2135 | C: 732.859.2144 | dsitar@sitarcompany.com



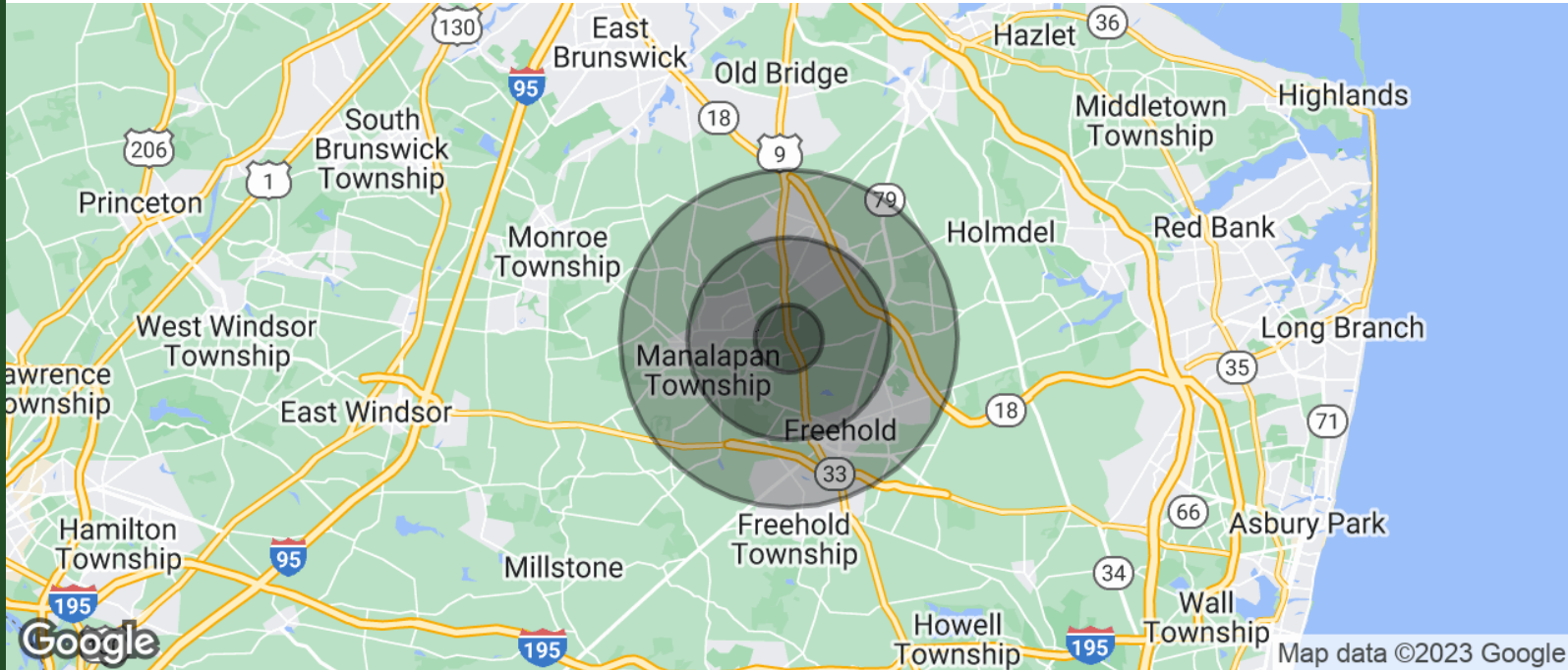
ALL INFORMATION FURNISHED REGARDING PROPERTY FOR SALE, RENTAL OR FINANCING IS FROM SOURCES DEEMED RELIABLE, BUT NO WARRANTY OR REPRESENTATION IS MADE AS TO THE ACCURACY THEREOF AND SAME IS SUBMITTED SUBJECT TO ERRORS, OMISSIONS, CHANGE OF PRICE, RENTAL OR OTHER CONDITIONS, WITHDRAWAL WITHOUT NOTICE, AND TO ANY SPECIAL LISTING CONDITIONS IMPOSED BY OUR PRINCIPALS.

1481 Oak Tree Road, Iselin, NJ 08830 | 732.283.9000 | sitarcompany.com

Bank/Office/Retail & Drive-Thrus

191 Plaza 9, Manalapan, NJ 07726

DEMOGRAPHICS MAP & REPORT



POPULATION	1 MILE	3 MILES	5 MILES
TOTAL POPULATION	5,713	52,635	126,896
AVERAGE AGE	39.0	42.0	40.0
AVERAGE AGE (MALE)	39.3	40.8	39.2
AVERAGE AGE (FEMALE)	38.9	42.9	40.7

HOUSEHOLDS & INCOME	1 MILE	3 MILES	5 MILES
TOTAL HOUSEHOLDS	1,827	17,495	42,385
# OF PERSONS PER HH	3.1	3.0	3.0
AVERAGE HH INCOME	\$131,823	\$122,510	\$121,962
AVERAGE HOUSE VALUE	\$493,140	\$503,904	\$486,466

* Demographic data derived from 2020 ACS - US Census

William Sitar Jr. | O: 732.623.2155 | C: 973.202.9119 | bsitarlaw@sitarcompany.com
 Douglas Sitar | O: 732.623.2135 | C: 732.859.2144 | dsitar@sitarcompany.com



ALL INFORMATION FURNISHED REGARDING PROPERTY FOR SALE, RENTAL OR FINANCING IS FROM SOURCES DEEMED RELIABLE, BUT NO WARRANTY OR REPRESENTATION IS MADE AS TO THE ACCURACY THEREOF AND SAME IS SUBMITTED SUBJECT TO ERRORS, OMISSIONS, CHANGE OF PRICE, RENTAL OR OTHER CONDITIONS, WITHDRAWAL WITHOUT NOTICE, AND TO ANY SPECIAL LISTING CONDITIONS IMPOSED BY OUR PRINCIPALS.

Bank/Office/Retail & Drive-Thrus

191 Plaza 9, Manalapan, NJ 07726



Worldwide Real Estate Services Since 1978

OUR SERVICES

Commercial Brokerage Leasing and Sales

Sitar Realty Company TCN Worldwide is a leader in the commercial brokerage industry of New Jersey. We are full-service brokerage firm and the largest remaining regional independently owned commercial brokerage firm in the state.

Property Management Services

Twin Brook Management, LLC is widely respected in the property management industry and can handle all aspects of property management. We offer full service management or a more limited management approach depending on the client's needs.

Property Tax Consulting

Our real estate tax team can provide an analysis of your property's taxes to determine if you are over-assessed and based on the results of our analysis we can reduce your property tax burden.

Rent Receiver Services

Banks, law firms and courts rely on our company to preserve property values and stabilize properties that are in the process of foreclosure. Our hands-on approach, along with the latest technology allows our clients to feel comfortable and informed throughout the entire process.

Award-Winning Research

In today's real estate market, timely, accurate information can provide a competitive edge that our clients need to succeed. Our database allows us to access information pertaining to over 300 million square feet of office and industrial space and is updated continuously.

Consulting and Advisory Services

Our services range from multivariate financial analysis to interstate site selection. We can help to maximize your company's profits while your focus on your company's core business.

Development

Our development division has been responsible for the development of hundreds of millions of dollars of properties throughout New Jersey. Our firm is known for our high quality projects that are architecturally significant. Due to our years of experience, we can assist you at any level in the development process.

William Sitar Jr. | O: 732.623.2155 | C: 973.202.9119 | bsitarlaw@sitarcompany.com

Douglas Sitar | O: 732.623.2135 | C: 732.859.2144 | dsitar@sitarcompany.com



ALL INFORMATION FURNISHED REGARDING PROPERTY FOR SALE, RENTAL OR FINANCING IS FROM SOURCES DEEMED RELIABLE, BUT NO WARRANTY OR REPRESENTATION IS MADE AS TO THE ACCURACY THEREOF AND SAME IS SUBMITTED SUBJECT TO ERRORS, OMISSIONS, CHANGE OF PRICE, RENTAL OR OTHER CONDITIONS, WITHDRAWAL WITHOUT NOTICE, AND TO ANY SPECIAL LISTING CONDITIONS IMPOSED BY OUR PRINCIPALS.