



FOR LEASE

2422 3RD STREET

RETAIL SPACE OPPORTUNITY



WWW.TCPRE.COM

TERRY EVERLEY
D 415.539.1108 | C 415.359.7665

ZACH HAUPERT zhaupert@tcpre.com
D 415.539.1121 | C 415.812.1219

2422 THIRD STREET

PROPERTY SUMMARY

ADDRESS

2422 3rd Street, San Francisco, CA 94107

AVAILABLE SPACE

+/- 400 Square Feet

RENTAL RATE

\$2,250 / Month, IG

ZONING

UMU - Urban Mixed Use

AVAILABLE

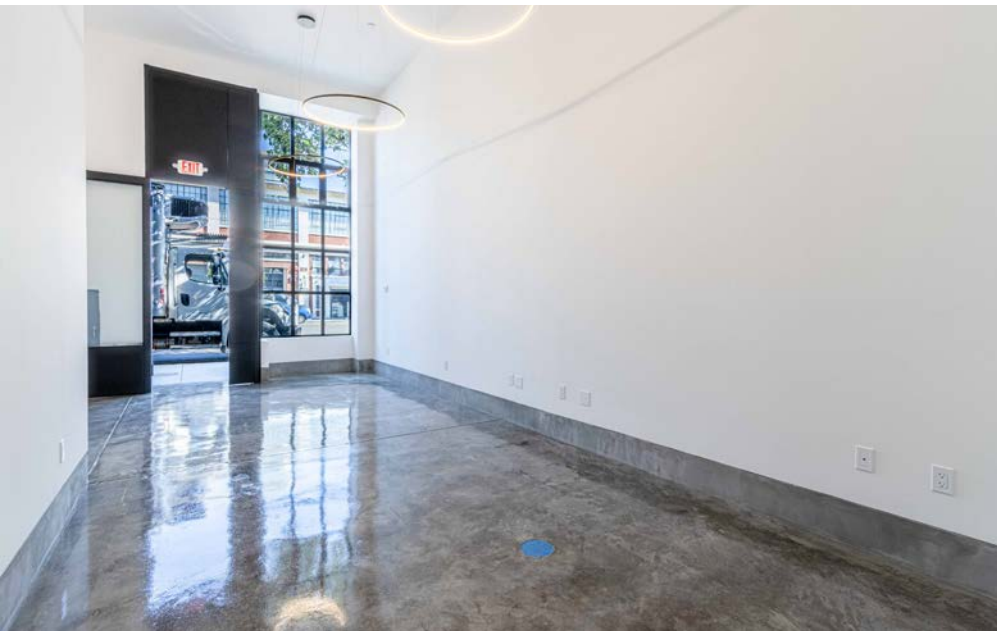
Immediately

BUILDING ATTRIBUTES

- + Newly Renovated Ground Floor Commercial Space
- + Outstanding 3rd Street Dogpatch Location
- + High Exposure & Traffic
- + Good Natural Light
- + Close Proximity to a Host of Amenities
- + ADA Restroom
- + Many Uses Considered



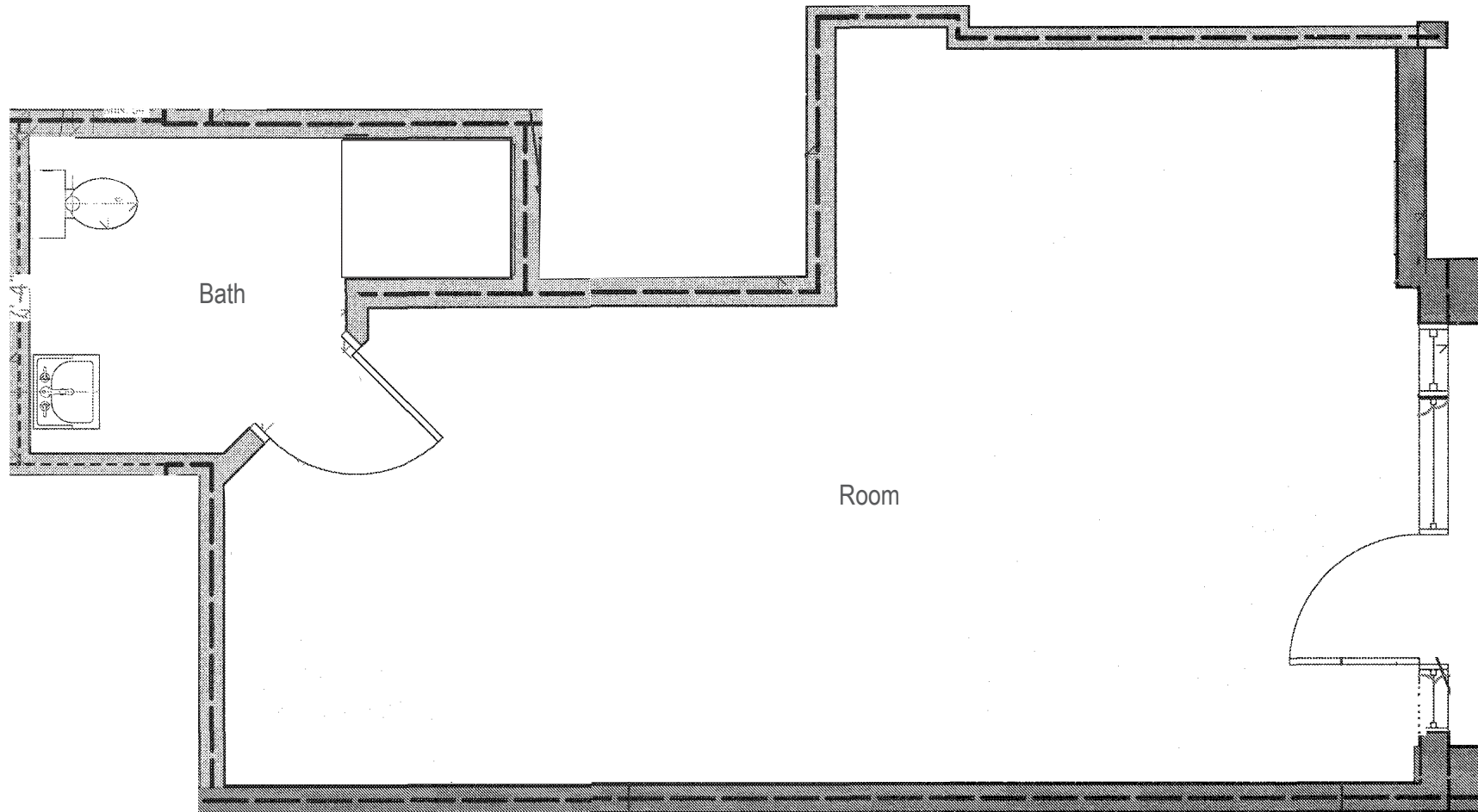
2422 THIRD STREET



2422 THIRD STREET

FLOOR PLAN

+/- 400 Square Feet



Third Street

2422 THIRD STREET

LOCATION OVERVIEW

Desirable Dogpatch location, walkable to nearby amenities, public transportation and to surrounding neighborhoods.



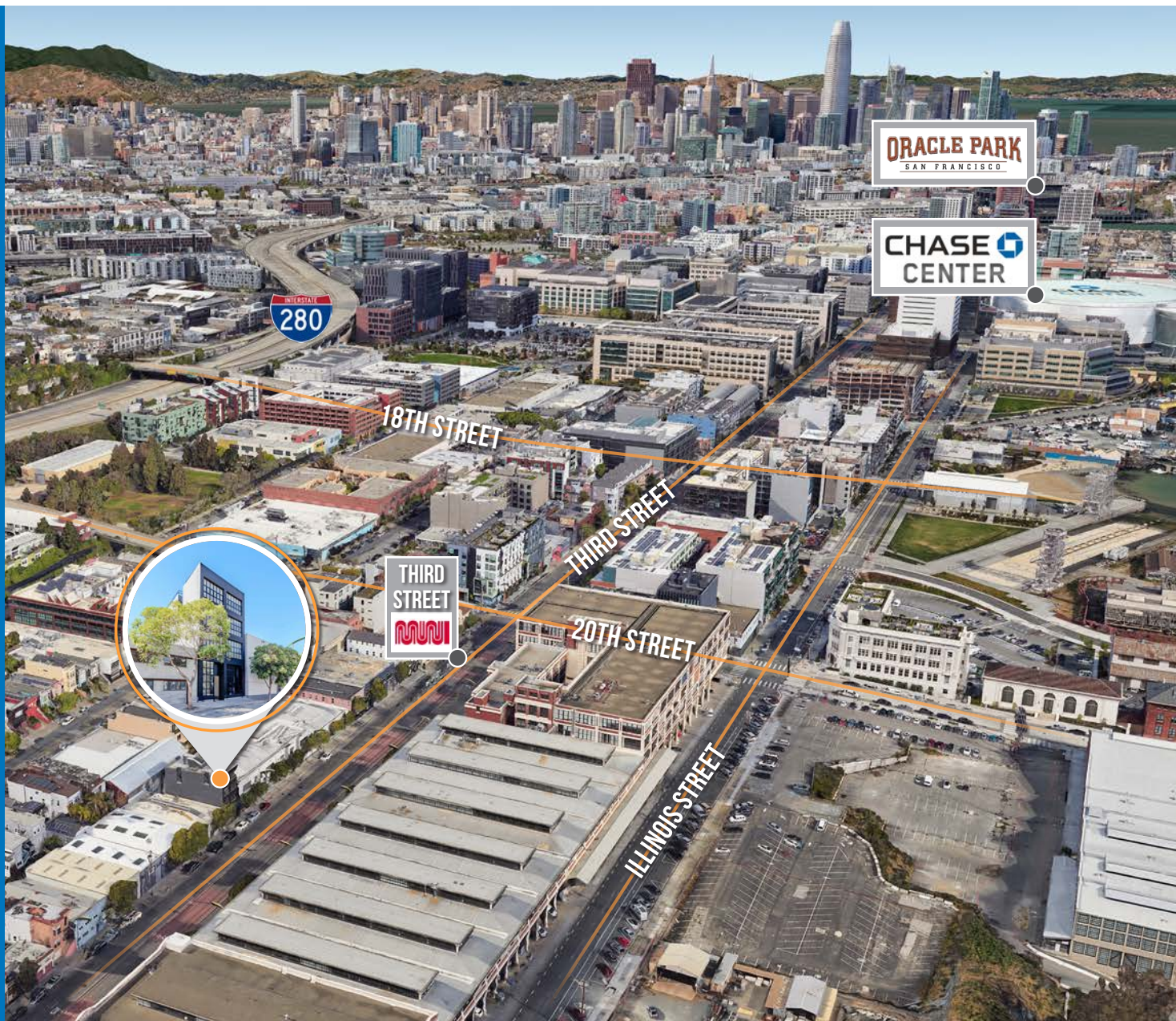
02 MIN to 3rd St Light Rail
10 MIN to 22nd St CalTrain
13 MIN to Chase Center



05 MIN to SOMA
10 MIN to Financial District
12 MIN to Mission District



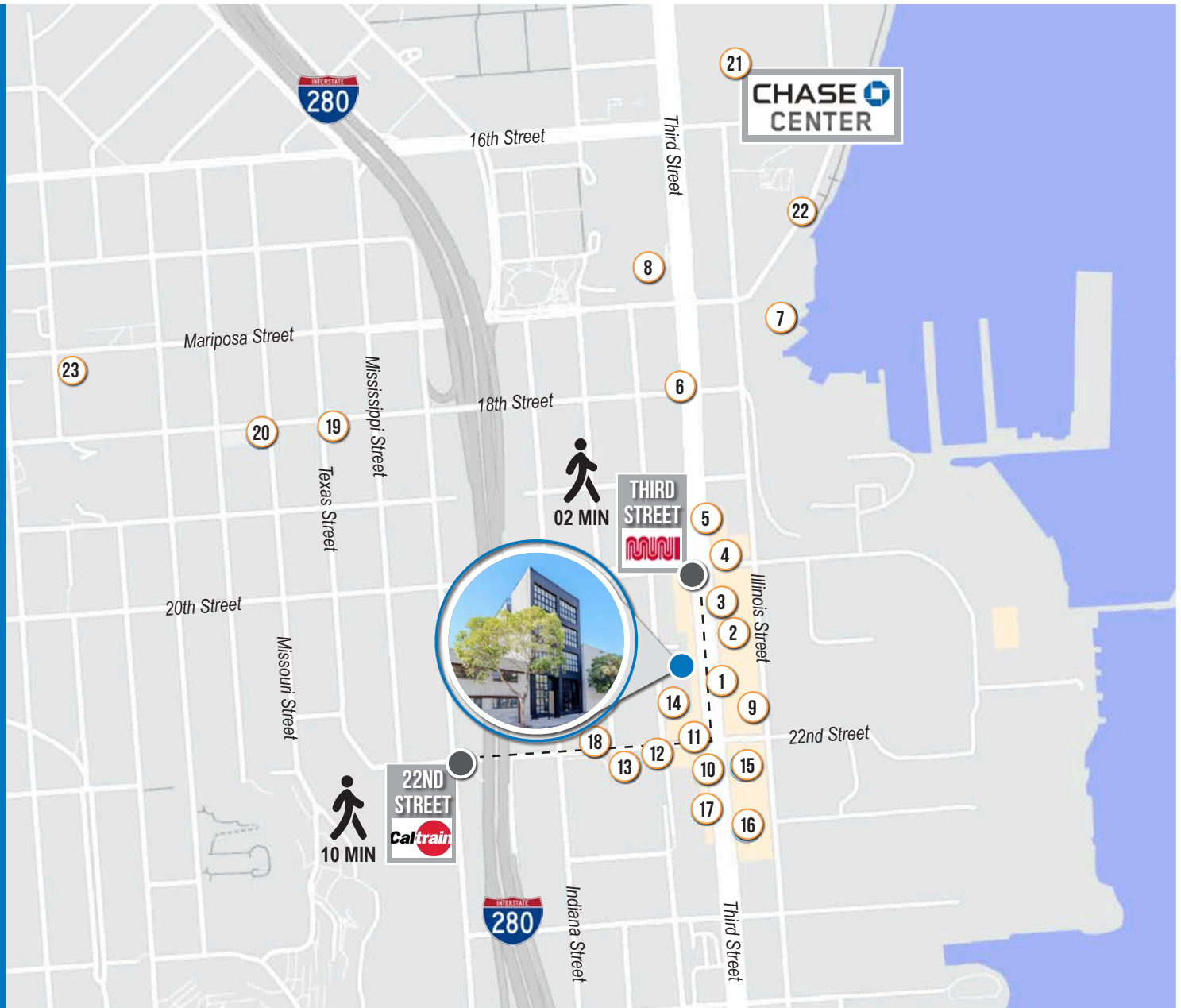
03 MIN to 280 On-Ramp
07 MIN to 80 On-Ramp
07 MIN to 101 On-Ramp



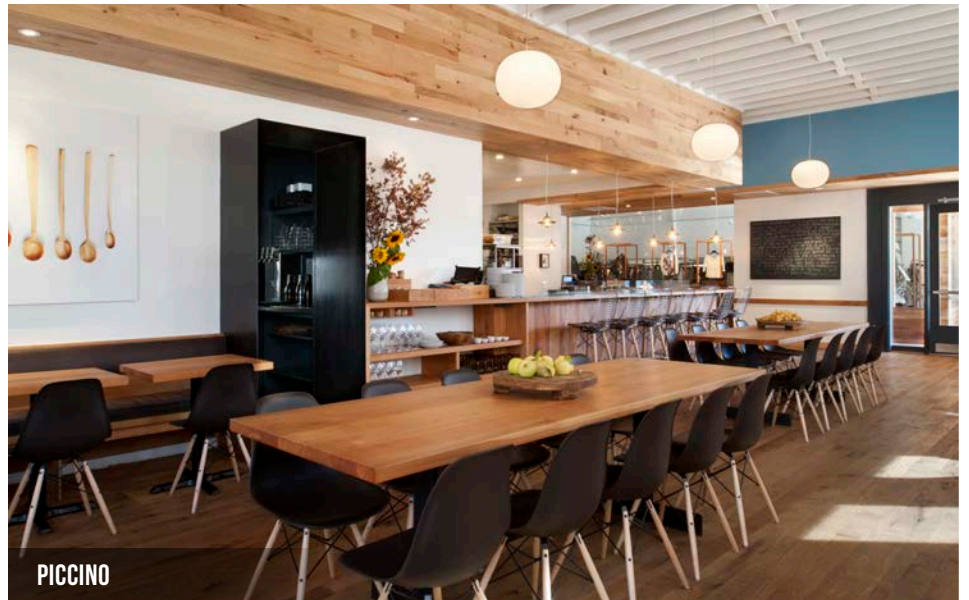
2422 THIRD STREET

NEARBY AMENITIES

- 1..... Gilberth's Rotisserie & Grill
- 2..... Neighbor Bakehouse
- 3..... The Plant Cafe Organic
- 4..... Third Rail
- 5..... Olfactory Brewing & Blending
- 6..... Moshi Moshi
- 7..... The Ramp Restaurant
- 8..... UCSF Medical Center
- 9..... Rocketbird
- 10..... Hard Knox Cafe
- 11..... Dogpatch Saloon
- 12..... Honeybear Boba
- 13..... Piccino
- 14..... Marcella's Lasagneria
- 15..... Souvla
- 16..... Dogpatch Boulders
- 17..... 3rd Street Boxing Gym
- 18..... Rickshaw Bagworks
- 19..... Plow
- 20..... Chez Maman East
- 21..... Chase Center
- 22..... Mission Rock Resort
- 23..... Louie's Original



2422 THIRD STREET



2422 THIRD
STREET



**CONTACT FOR MORE
INFORMATION**

TERRY EVERLEY

D 415.539.1108 C 415.359.7665

teverley@tcpre.com DRE # 01864017

ZACH HAUPERT

D 415.539.1121 C 415.812.1219

zhaupert@tcpre.com DRE # 01822907

The information presented has been secured from sources we believe to be reliable but we make no representations or warranties, expressed or implied, as to the accuracy of the information. Lessee must verify the information and bears all risk for any inaccuracies.