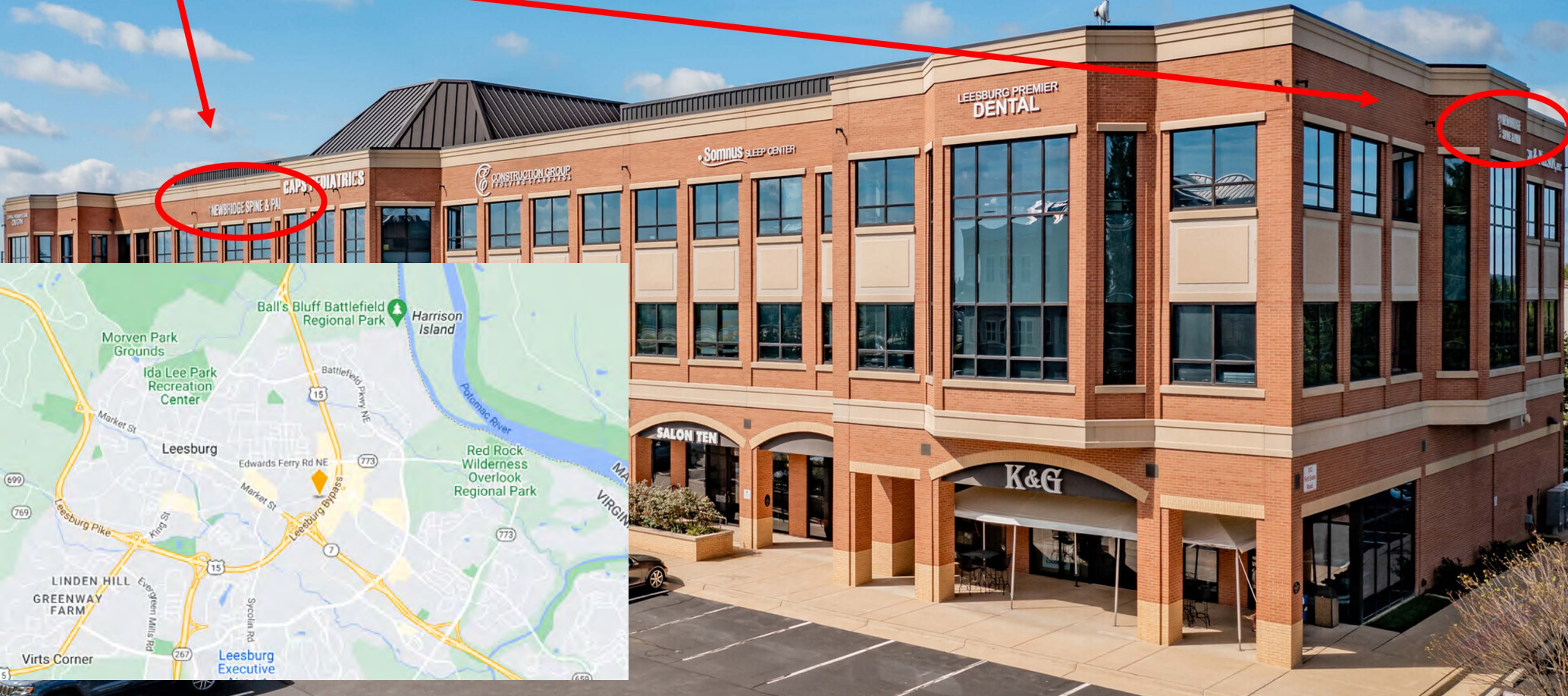


For Sale or Lease: Medical Office Condo

161 Fort Evans Rd NE; Suite 340
Leesburg, VA

Owner/User Investment Opportunity
Signage



For More Information

Maggie Wunderlick

(202) 217-4586

mwunderlick@tta-re.com

thetenantagency

4800 Montgomery Lane, 11th Floor | Bethesda, MD 20814

(301) 754-6166 | thetenantagency.com

For Sale or Lease: Medical Office Condo

161 Fort Evans Rd NE; Suite 340
Leesburg, VA

Property Description

- Building Area: 65,000 SF
- Suite Area: 7,000 SF
- Parking Type: Surface
- Built: 2008
- Zoning: LB:01
- Delivery: Vacant Upon Delivery
- 28 mins From Washington Dulles International Airport
- Building Signage With Visibility From Route 15/Leesburg Bypass
- 4 Bathrooms, 4 Exam Rooms, 4 Offices
- Conference Room And Kitchen
- Front Desk And Surgical Front Desk
- Ample Storage
- 2 Waiting Rooms
- Procedure/Recovery/HVAC
- Furniture And Medical Equipment May Be Available



For More Information

Maggie Wunderlick

(202) 217-4586

mwunderlick@tta-re.com

thetenantagency

4800 Montgomery Lane, 11th Floor | Bethesda, MD 20814

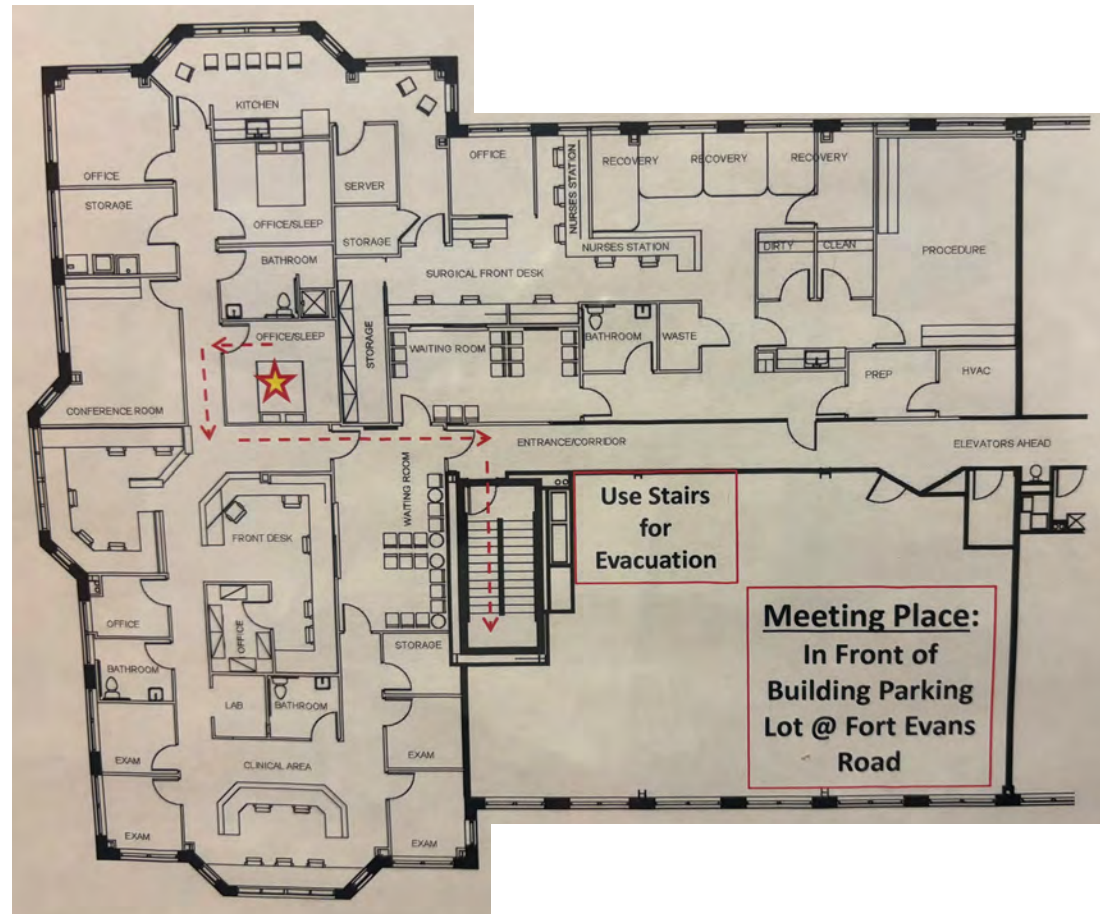
(301) 754-6166 | thetenantagency.com

For Sale or Lease: Medical Office Condo

161 Fort Evans Rd NE; Suite 340
Leesburg, VA

Floorplan

7,000 SF on 3rd Floor



For More Information

Maggie Wunderlick

(202) 217-4586

mwunderlick@tta-re.com

thetenantagency

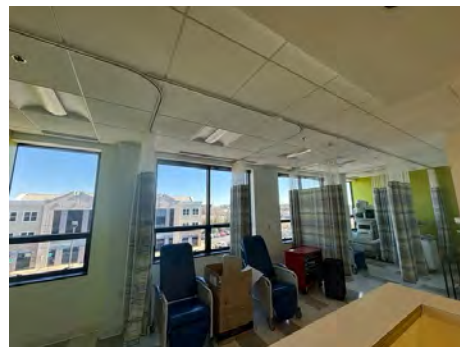
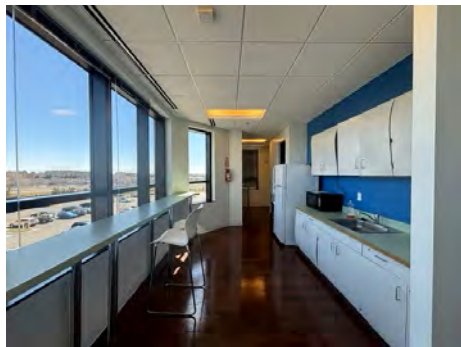
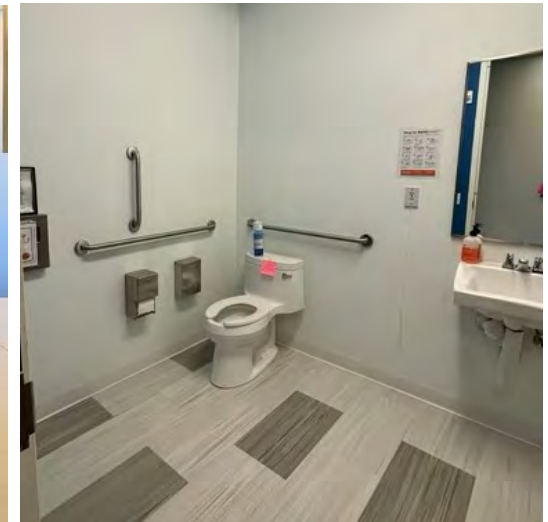
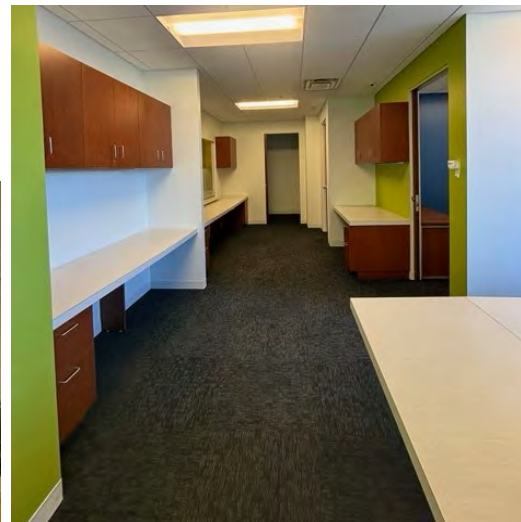
4800 Montgomery Lane, 11th Floor | Bethesda, MD 20814

(301) 754-6166 | thetenantagency.com

For Sale or Lease: Medical Office Condo

161 Fort Evans Rd NE; Suite 340
Leesburg, VA

7,000 SF on 3rd Floor



For More Information

Maggie Wunderlick

(202) 217-4586

mwunderlick@tta-re.com

thetenantagency

4800 Montgomery Lane, 11th Floor | Bethesda, MD 20814

(301) 754-6166 | thetenantagency.com