

419 E. PINCONNING ROAD
PINCONNING, MICHIGAN

INDUSTRIAL FOR SALE
134,629 Square Feet Available



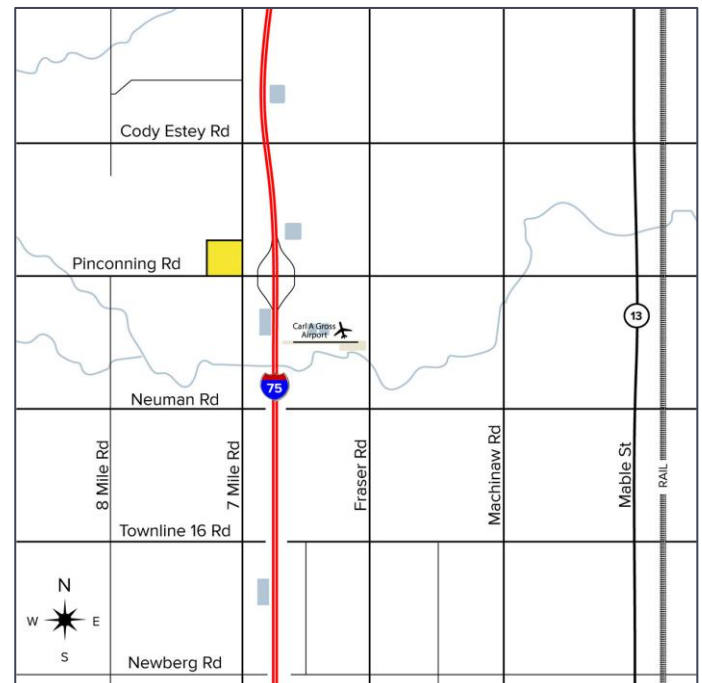
**SIGNATURE
ASSOCIATES**
KNOW SIGNATURE | KNOW RESULTS

STATE-OF-THE ART BUILDING



PROPERTY FEATURES

- 134,629 square feet available
 - 49,180 sq. ft. main building with a 12,975 sq. ft. mezzanine
 - 44,352 sq. ft. greenhouse
 - 10,000 sq. ft. a/c lab building
 - Miscellaneous additional buildings
- (2) grade level doors, (1) truckwell
- Multi-property campus located on 25.00 acres
- Suitable for many uses include lab, research, and manufacturing
- Excellent I-75 freeway access & visibility at Pinconning Road
- Power provided by off-grid, natural gas generators w/ CO2 collection - additional "Grid" power available
- Gated property with advanced security surveillance system
- Very clean, well-maintained buildings
- Sale Price: \$8,650,000 (64.25/sq. ft.)



For more information, please contact:

STEVE GORDON

(248) 948 0101

sgordon@signatureassociates.com

GARY STEPHENS

(248) 948 0104

gstephens@signatureassociates.com

SIGNATURE ASSOCIATES

One Towne Square, Suite 1200

Southfield, MI 48076

www.signatureassociates.com

419 E. Pinconning Road – Pinconning, Michigan

Industrial For Sale

134,629
Square Feet
AVAILABLE

Exterior Photos



For more information, please contact:
STEVE GORDON
(248) 948 0101
sgordon@signatureassociates.com

GARY STEPHENS
(248) 948 0104
gstephens@signatureassociates.com

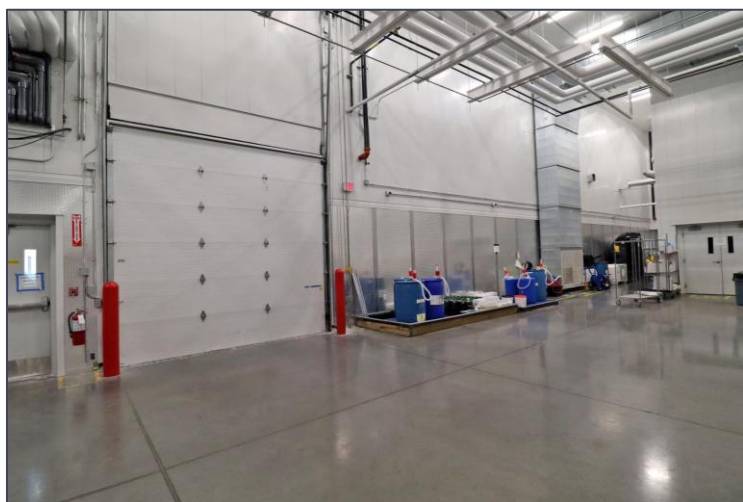
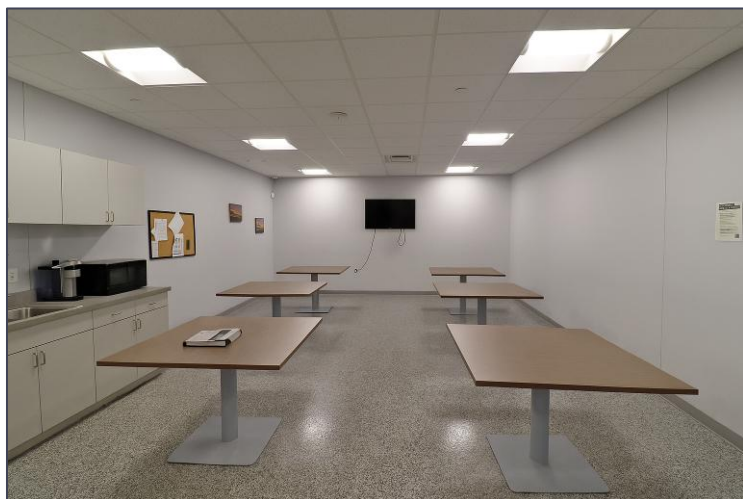
SIGNATURE ASSOCIATES
One Towne Square, Suite 1200
Southfield, MI 48076
www.signatureassociates.com

419 E. Pinconning Road – Pinconning, Michigan

Industrial For Sale

134,629
Square Feet
AVAILABLE

Interior Photos



For more information, please contact:

STEVE GORDON

(248) 948 0101

sgordon@signatureassociates.com

GARY STEPHENS

(248) 948 0104

gstephens@signatureassociates.com

SIGNATURE ASSOCIATES

One Towne Square, Suite 1200

Southfield, MI 48076

www.signatureassociates.com

Information is subject to verification and no liability for errors or omissions is assumed. Price is subject to change and listing withdrawal.

419 E. Pinconning Road – Pinconning, Michigan

Industrial For Sale

134,629
Square Feet
AVAILABLE

Additional Photos



For more information, please contact:

STEVE GORDON

(248) 948 0101

sgordon@signatureassociates.com

GARY STEPHENS

(248) 948 0104

gstephens@signatureassociates.com

SIGNATURE ASSOCIATES

One Towne Square, Suite 1200

Southfield, MI 48076

www.signatureassociates.com

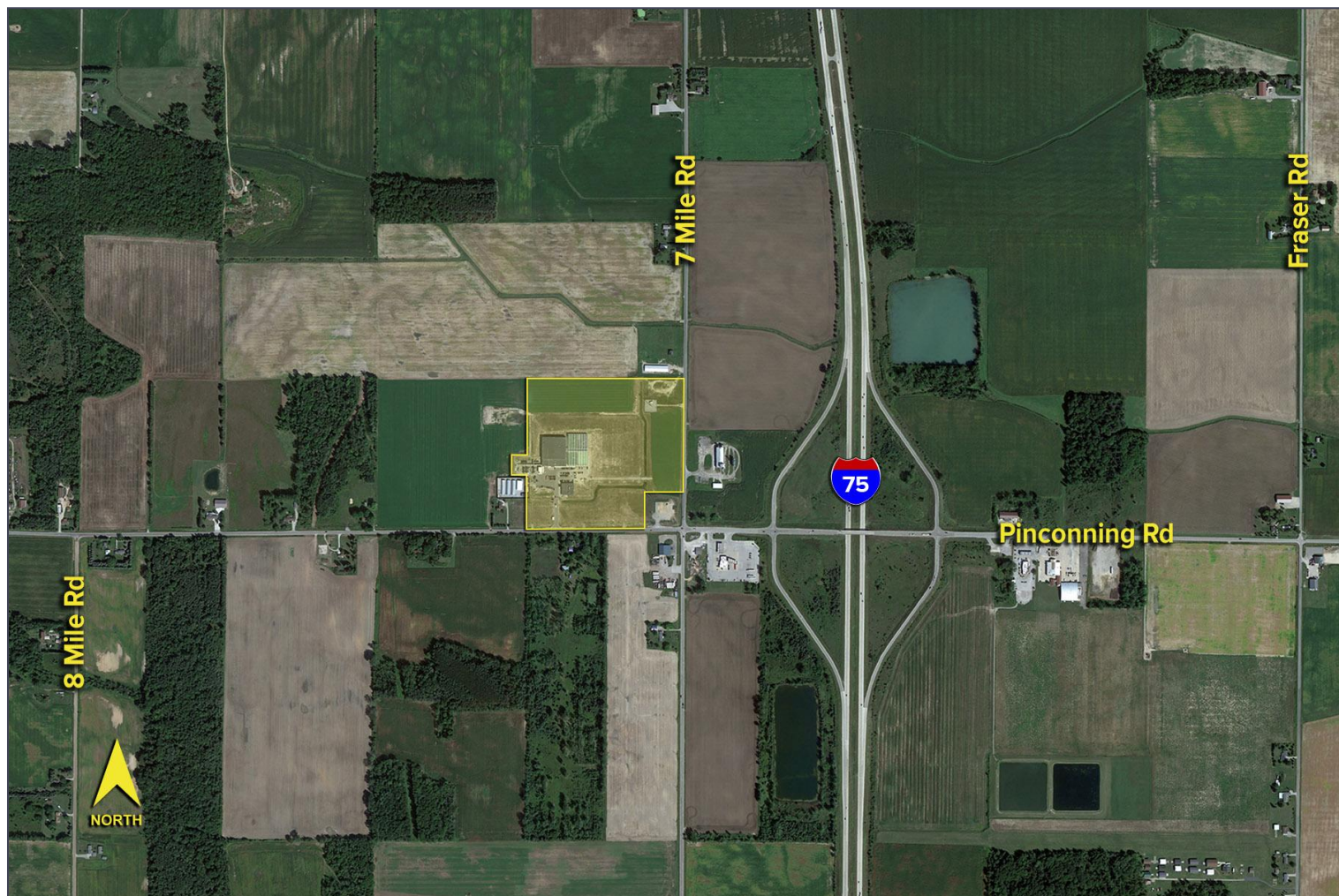
Information is subject to verification and no liability for errors or omissions is assumed. Price is subject to change and listing withdrawal.

419 E. Pinconning Road – Pinconning, Michigan

Industrial For Sale

134,629
Square Feet
AVAILABLE

Aerial



For more information, please contact:

STEVE GORDON

(248) 948 0101

sgordon@signatureassociates.com

GARY STEPHENS

(248) 948 0104

gstephens@signatureassociates.com

SIGNATURE ASSOCIATES

One Towne Square, Suite 1200

Southfield, MI 48076

www.signatureassociates.com