

For Sale

CBRE

Alabama Ave

St. Louis Park, MN

3990 Alabama Ave

3986 Alabama Ave

3982 Alabama Ave

3978 Alabama Ave

Contact Us

John Ryden
Senior Vice President
+1 612 723 9313
john.ryden@cbre.com

Maxx Schindel
Associate
+1 218 232 6901
maxx.schindel@cbre.com



3990 Alabama Ave

St. Louis Park, MN

For Sale

\$190 PSF / \$480,320

Building SF	2,528
-------------	-------

Office SF	2,528
-----------	-------

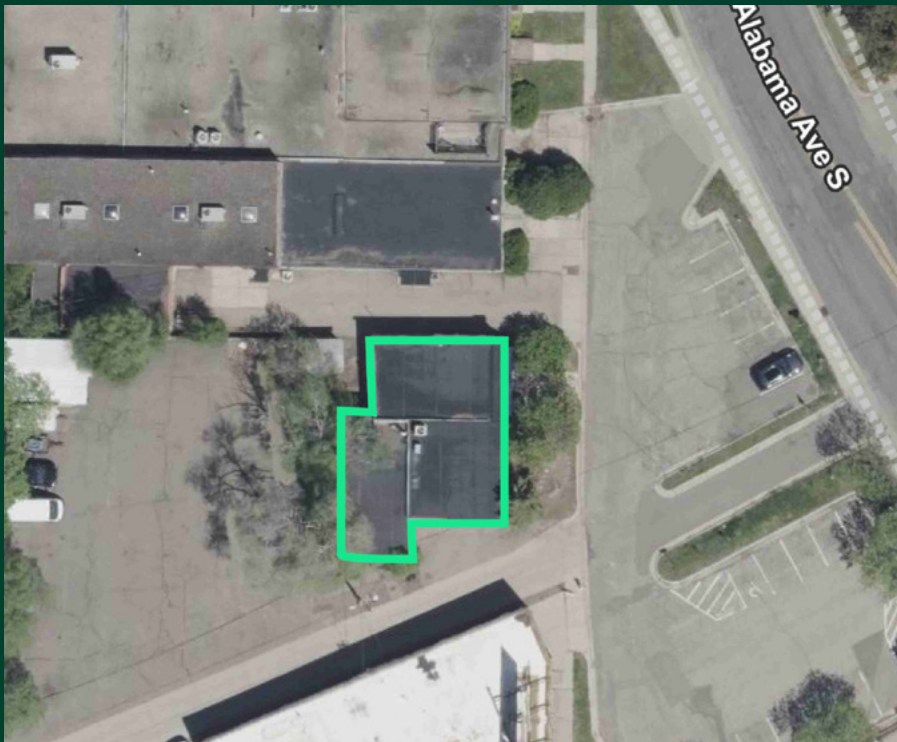
Site SF	5,030
---------	-------

Clear Height	10'
--------------	-----

Year Built	1950
------------	------

Parking	5 spaces
---------	----------

1 Garage with double doors	
----------------------------	--



3986 Alabama Ave
St. Louis Park, MN

For Sale

\$180 PSF / \$897,840

Building SF	4,988
Office SF	1,900
Site SF	8,481
Loading	2 drive-in doors
Clear Height	9'-18'
Year Built	1954
Parking	6 spaces



3982 Alabama Ave
St. Louis Park, MN

For Sale

\$180 PSF / \$1,575,000

Building SF	8,750
Office SF	2,000
Apartment SF	1,650
Site SF	8,497
Loading	1 drive-in door to dock
Clear Height	14'
Year Built	1956
Parking	8 spaces



3978 Alabama Ave
St. Louis Park, MN

For Sale

\$180 PSF / \$1,225,800

Building SF	6,810
Office SF	1,600
Loading	1 dock door
Site SF	8,497
Clear Height	14'
Year Built	1950
Parking	11 spaces

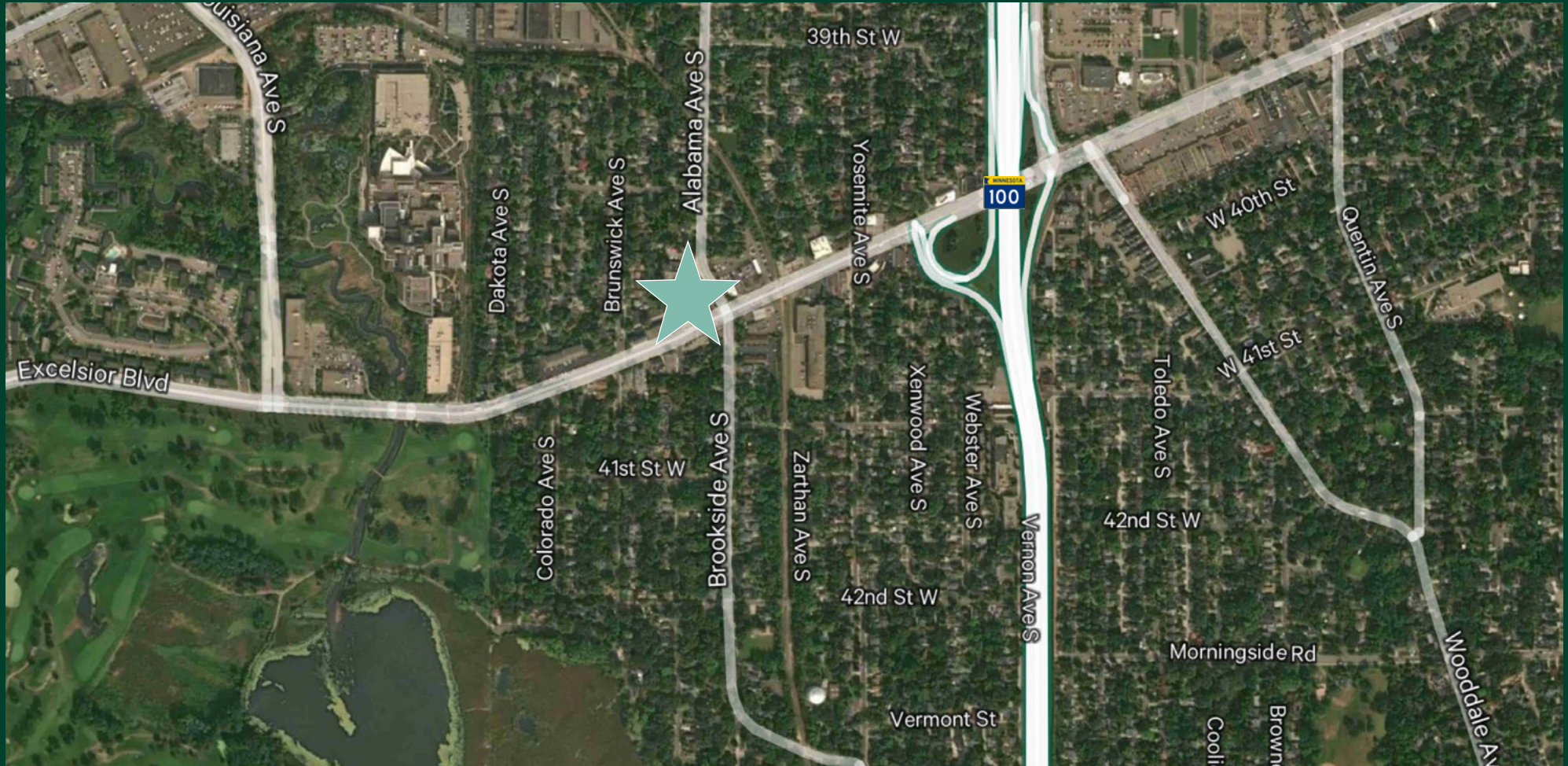




Location Map

St. Louis Park, MN

For Sale



© 2025 CBRE, Inc. All rights reserved. This information has been obtained from sources believed reliable but has not been verified for accuracy or completeness. CBRE, Inc. makes no guarantee, representation or warranty and accepts no responsibility or liability as to the accuracy, completeness, or reliability of the information contained herein. You should conduct a careful, independent investigation of the property and verify all information. Any reliance on this information is solely at your own risk. CBRE and the CBRE logo are service marks of CBRE, Inc. All other marks displayed on this document are the property of their respective owners, and the use of such marks does not imply any affiliation with or endorsement of CBRE.