

Oxford Companies
734.665.6500
oxfordcompanies.com



Integrated
Real Estate
Services



Office Building For Lease

Concord Center

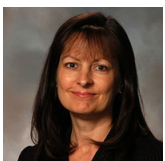
455 E. Eisenhower Pkwy., Suite 45

Ann Arbor, MI 48104

997 SF

\$23.50 SF/yr (MG)

Available



Contact Karen O'Neil for
more information or to
schedule a tour.

Office: 734.665.6500
Cell: 734.323.4263
koneil@oxfordcompanies.com

Concord Center
455 E. Eisenhower Pkwy - Suite 45
Ann Arbor, MI 48104



Integrated
Real Estate
Services



OFFERING SUMMARY

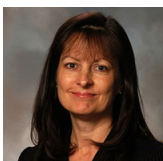
Lease Rate:	\$23.50 SF/yr (MG)
Date Available:	7/1/2024
Available SF:	997 SF
Year Built:	1987
Submarket:	South Side Ann Arbor

PROPERTY OVERVIEW

Concord Center is a three-story, mixed-use building offering beautiful Ann Arbor office space in the center of Ann Arbor's bustling Southside. Its beautiful brick exterior and location on the corner of E. Eisenhower and S. State provides remarkable visibility, as well as fantastic views for employees and clients. Well-maintained walkways and a picturesque pond add to Concord's welcoming environment. Multiple amenities are also onsite including restaurants, shopping and a beauty salon.

PROPERTY HIGHLIGHTS

- Recent common area renovations
- Located on the corner of S. State St. and E. Eisenhower Pkwy.
- Immediate access to I-94
- Across from Briarwood Mall & minutes from downtown & U-M
- Less than a mile away from multiple hotels and restaurants, including these within the building itself: Olive Garden, Mediterraneo, Anna's House, and Cottage Inn
- Ample parking adjacent to building
- Streamlined leasing experience for convenience and ease
- Locally-owned and professionally managed



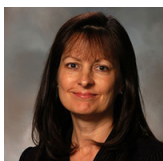
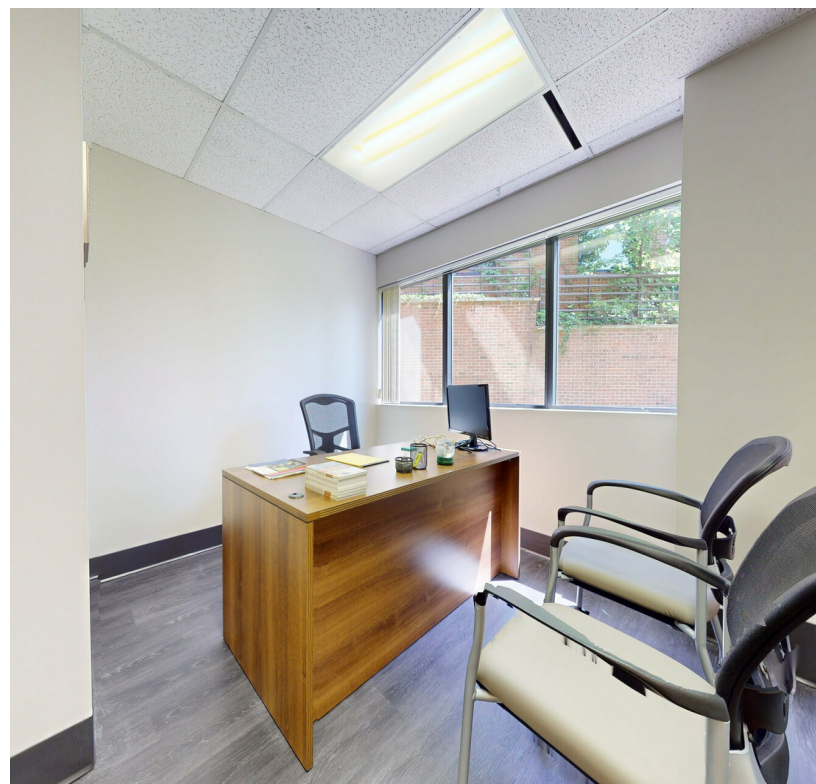
Contact Karen O'Neil for more information or to schedule a tour.

Office: 734.665.6500
Cell: 734.323.4263
koneil@oxfordcompanies.com

Concord Center
455 E. Eisenhower Pkwy - Suite 45
Ann Arbor, MI 48104



Integrated
Real Estate
Services



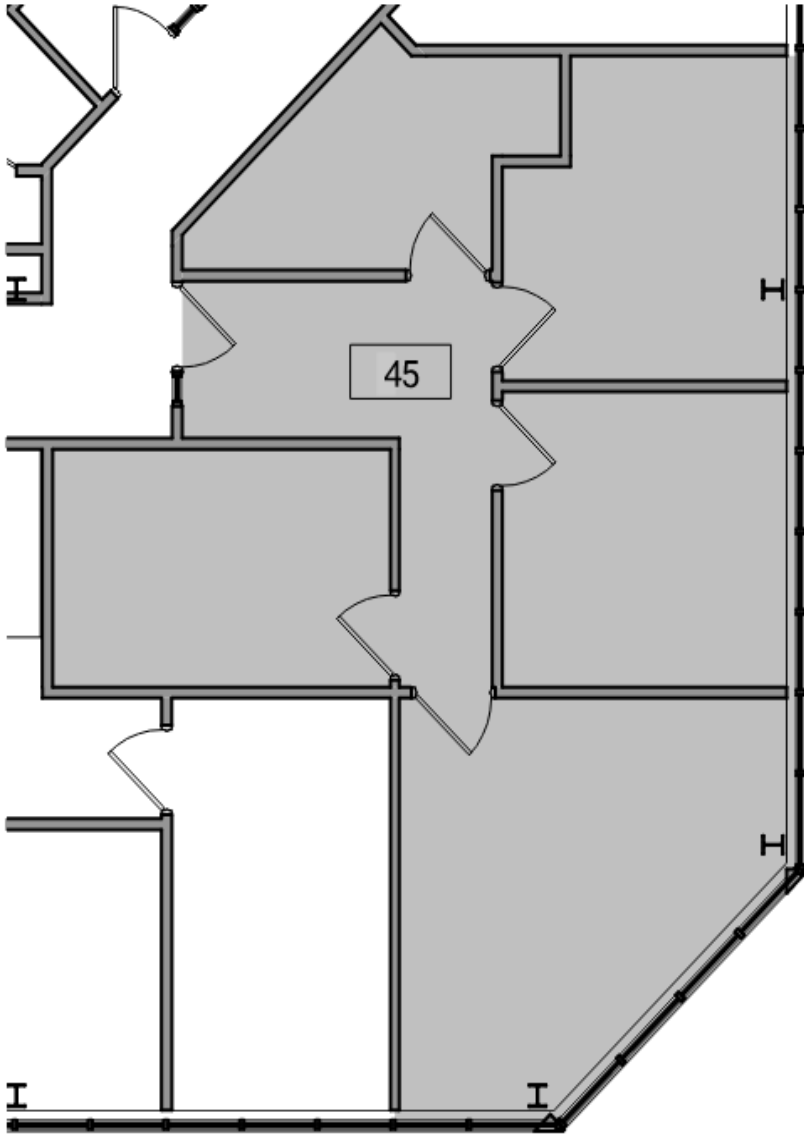
Contact Karen O'Neil for
more information or to
schedule a tour.

Office: 734.665.6500
Cell: 734.323.4263
koneil@oxfordcompanies.com

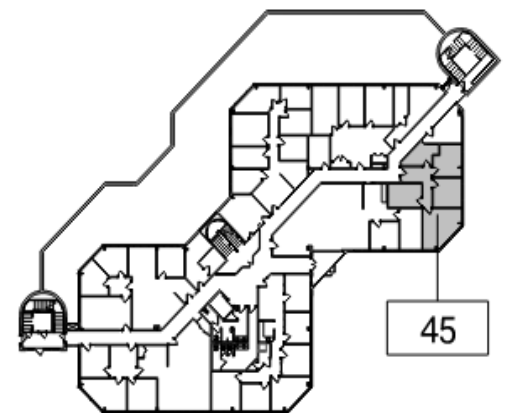
Concord Center
455 E. Eisenhower Pkwy - Suite 45
Ann Arbor, MI 48104



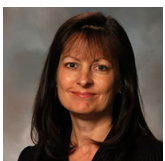
Integrated
Real Estate
Services



2 Suite 15 - Partial Terrace Level Existing Floor Plan
15 4' 8' 16' 1/8" = 1'-0"



1 Key Plan - Terrace Level
15 80' 160' 1" = 80'-0"



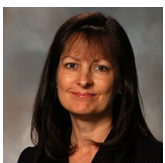
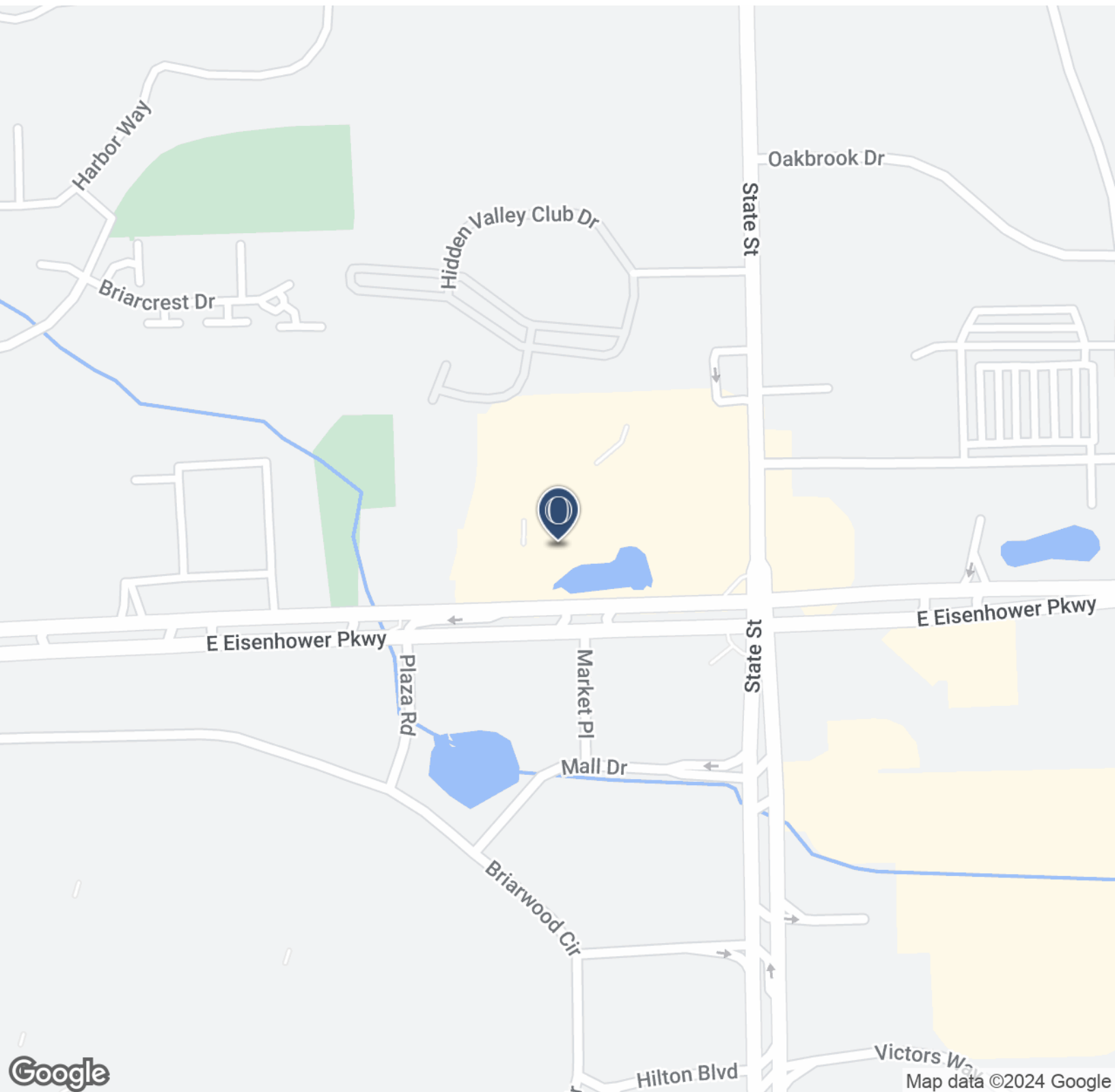
Contact Karen O'Neil for more information or to schedule a tour.

Office: 734.665.6500
Cell: 734.323.4263
koneil@oxfordcompanies.com

Concord Center
455 E. Eisenhower Pkwy - Suite 45
Ann Arbor, MI 48104



Integrated
Real Estate
Services



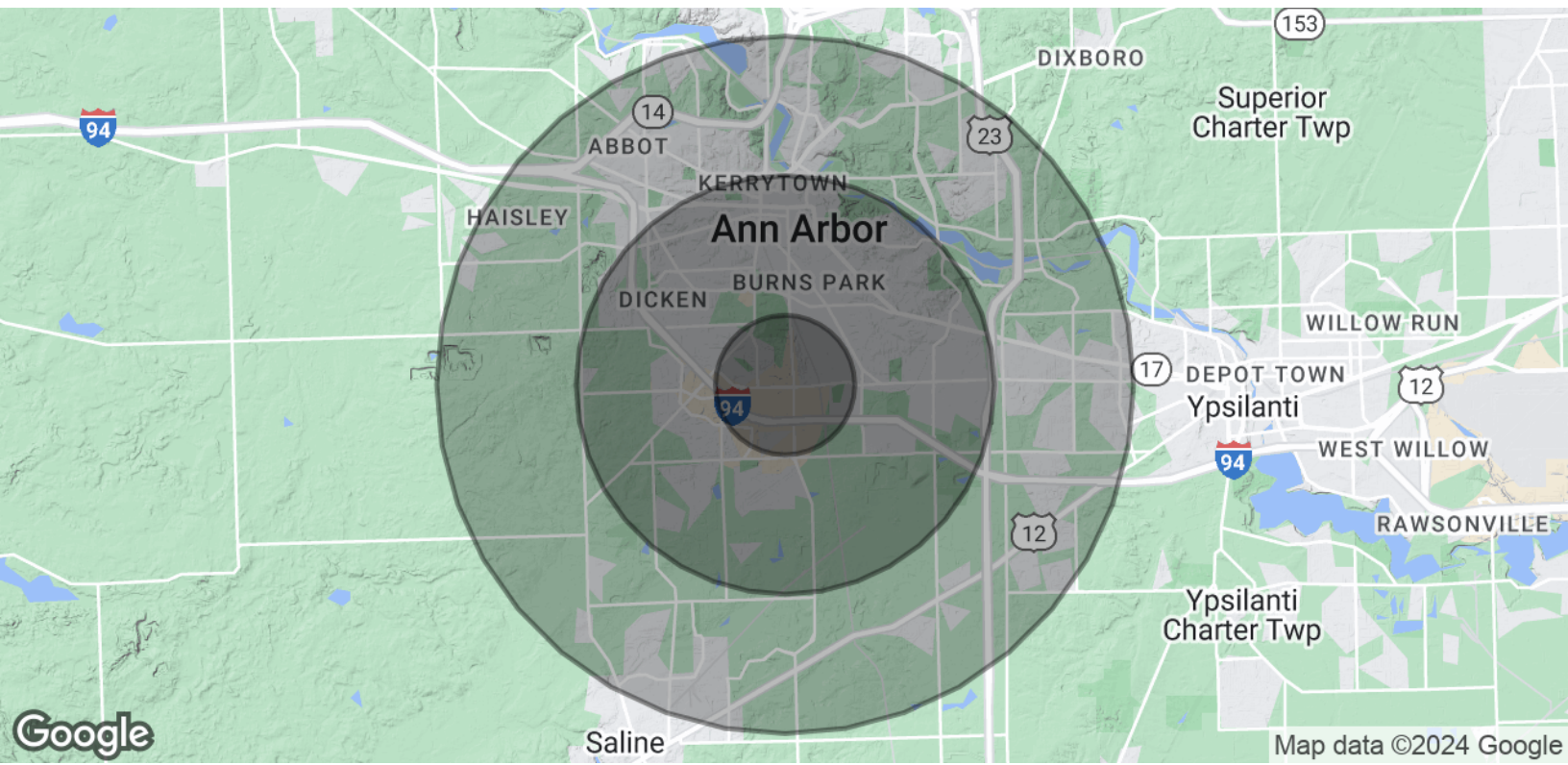
Contact Karen O'Neil for
more information or to
schedule a tour.

Office: 734.665.6500
Cell: 734.323.4263
koneil@oxfordcompanies.com

Concord Center
 455 E. Eisenhower Pkwy - Suite 45
 Ann Arbor, MI 48104

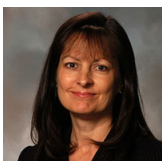


Integrated
 Real Estate
 Services



POPULATION	1 MILE	3 MILES	5 MILES
Total Population	9,584	99,417	184,932
Average age	31.5	31.0	32.8
Average age (Male)	31.8	30.9	32.4
Average age (Female)	31.0	31.1	33.2
HOUSEHOLDS & INCOME	1 MILE	3 MILES	5 MILES
Total households	4,828	37,880	71,962
# of persons per HH	2.0	2.6	2.6
Average HH income	\$59,703	\$76,078	\$79,716
Average house value	\$117,477	\$321,320	\$322,530

* Demographic data derived from 2020 ACS - US Census



Contact Karen O'Neil for more information or to schedule a tour.

Office: 734.665.6500
 Cell: 734.323.4263
koneil@oxfordcompanies.com