

OFFICE SPACE FOR LEASE



3675 Huntington Dr. Pasadena, CA 91107

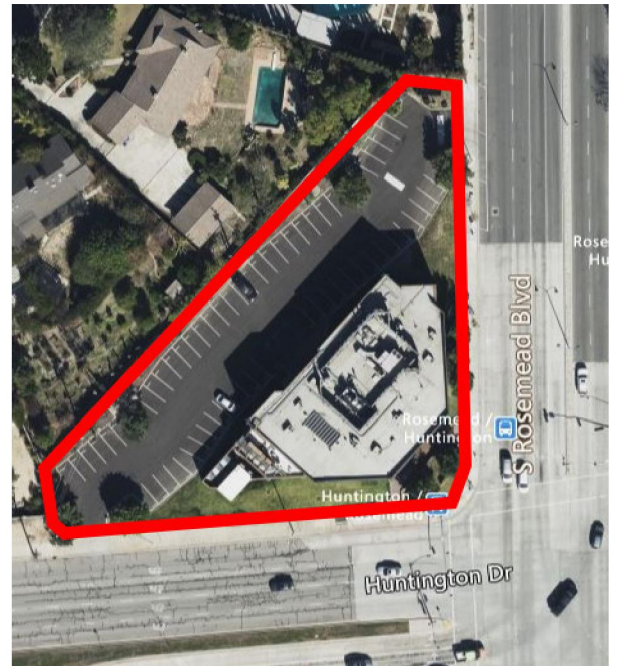


PROPERTY HIGHLIGHTS

- 10 Private Offices
- Open Atrium Entrance
- Free unreserved parking
- Utilities and janitorial included
- Long window line with lots of natural light
- Excellent Sign Frontage
- Easy Access to 210 Hwy
- High traffic intersection at Huntington and Rosemead Blvd

PROPERTY CHARACTERISTICS

Available SQFT	2,485 SF
Lease Rate	\$2.80 PSF
Zoning	LA County C2 Commercial
Use	Retail/ Office
Parking	62 Spaces Open Unreserved
Building	Two story elevator accessible
Management	On site management



Representing the
Top 12% of Coldwell Banker®
Agents Worldwide

JEFF WIGGINS, Senior Commercial Advisor
DRE #01754343
Coldwell Banker Commercial
O: (626) 449-5222 x 154 | M: (626) 278-7745
jeff.wiggins@cbcprt.com

©, 2023 Coldwell Banker. All Rights Reserved. Coldwell Banker and the Coldwell Banker Commercial logos are trademarks of Coldwell Banker Real Estate LLC. The Coldwell Banker® System is comprised of company owned offices which are owned by a subsidiary of Realogy Brokerage Group LLC and franchised offices which are independently owned and operated. The Coldwell Banker System fully supports the principles of the Equal Opportunity Act.

3675 Huntington Drive | Pasadena, CA 91107

Suite 200

