



WINSTON TRAITTEL
REALTY, INC.

FOR SALE OR LEASE



25301 Glendale Avenue Redford Township, MI 48239

For More Information Contact:

Mark Lusky



248.624.7200



mlusky@wtrealty.com

Information contained herein is subject to verification and no liability for errors or omissions is assumed.
Price is subject to change and listing may be withdrawn without notice.

PROPERTY INFORMATION

20,640 SF ON 1.05 ACRES

1,296 SF OFFICE

BUILT IN 1997

BLOCK AND STEEL CONSTRUCTION

METAL ROOF

STORAGE MEZZANINE

19' CLEAR CEILING HEIGHT

70' FULL LENGTH TRUCKWELL, W/LEVELER

3 OVERHEAD DOORS

80' CLEAR SPAN

FIRE SUPPRESSION

300A/120V POWER

CORAYVAC RADIAT GAS HEAT

LED LIGHTING

25+ PARKING SPACES

M-2 (LIGHT INDUSTRIAL) ZONING

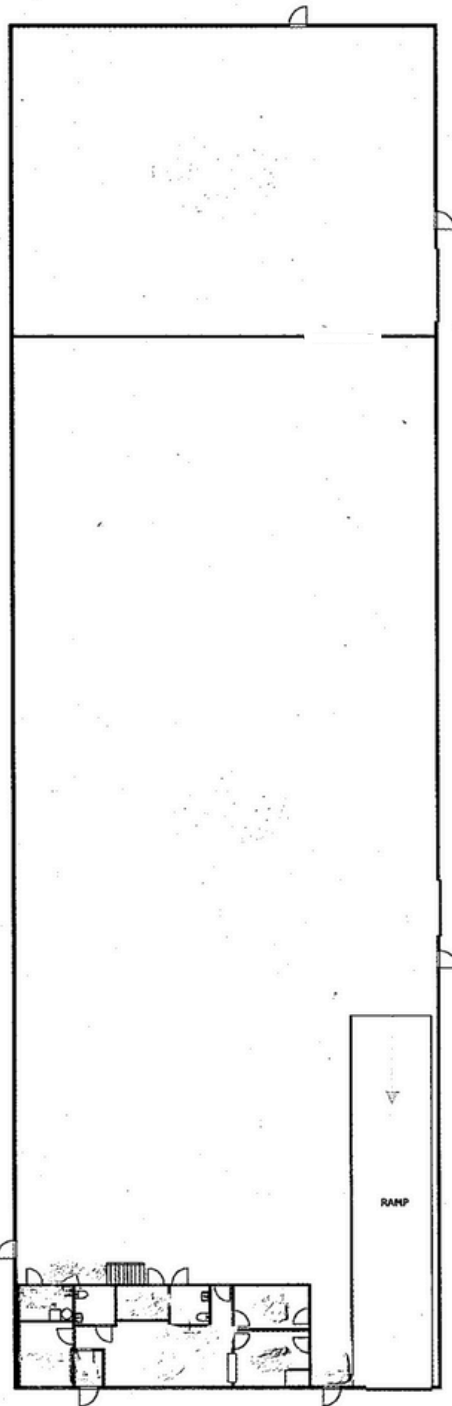
LEASE RATE: \$6.50 PER SQUARE FOOT NNN

SALE PRICE: CONTACT BROKER



FOR MORE INFORMATION CONTACT:
MARK LUSKY 248-624-7200

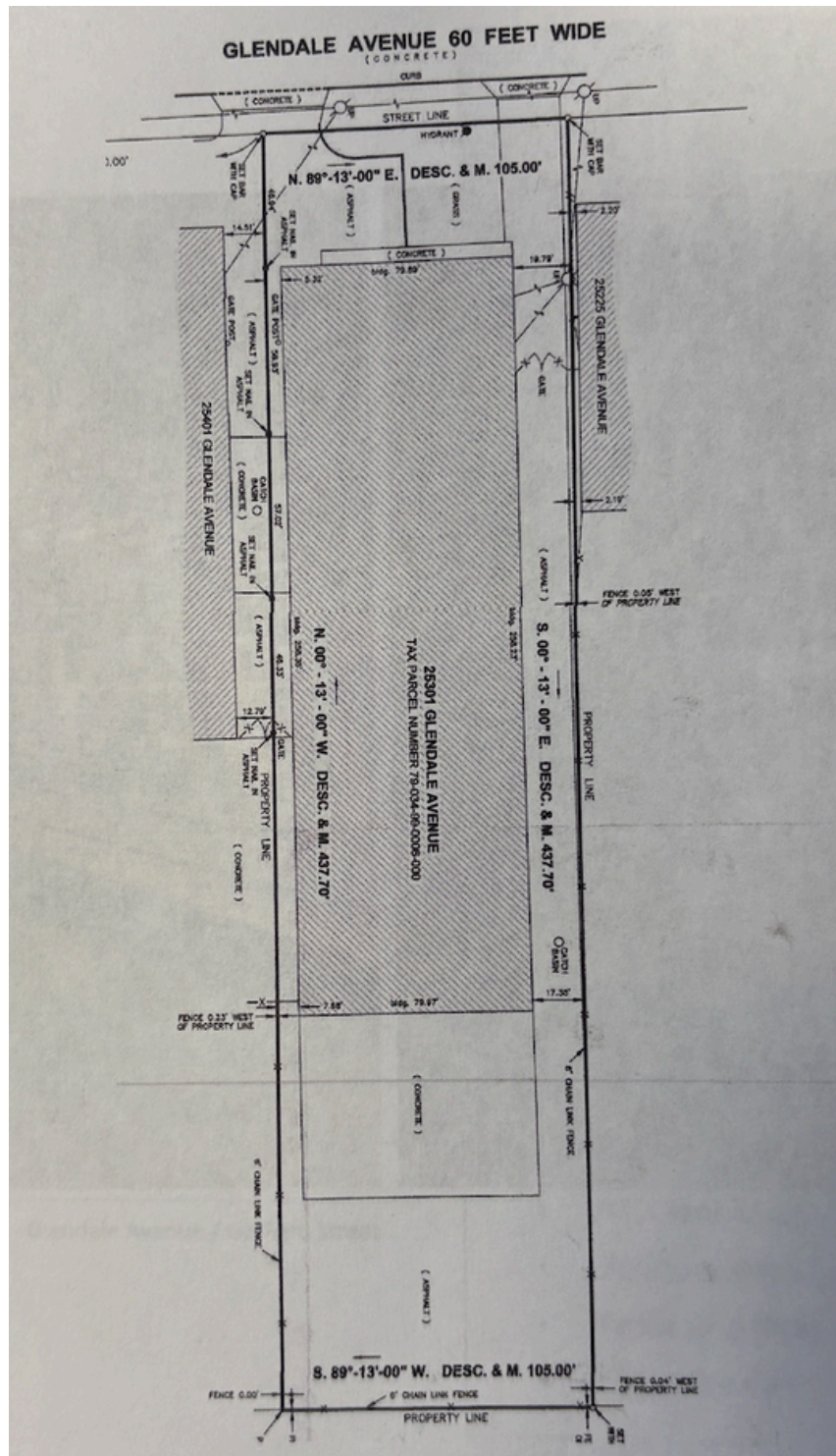
FLOOR PLAN



FOR MORE INFORMATION CONTACT:
MARK LUSKY 248-624-7200

Information contained herein is subject to verification and no liability for errors or omissions is assumed.
Price is subject to change and listing may be withdrawn without notice.

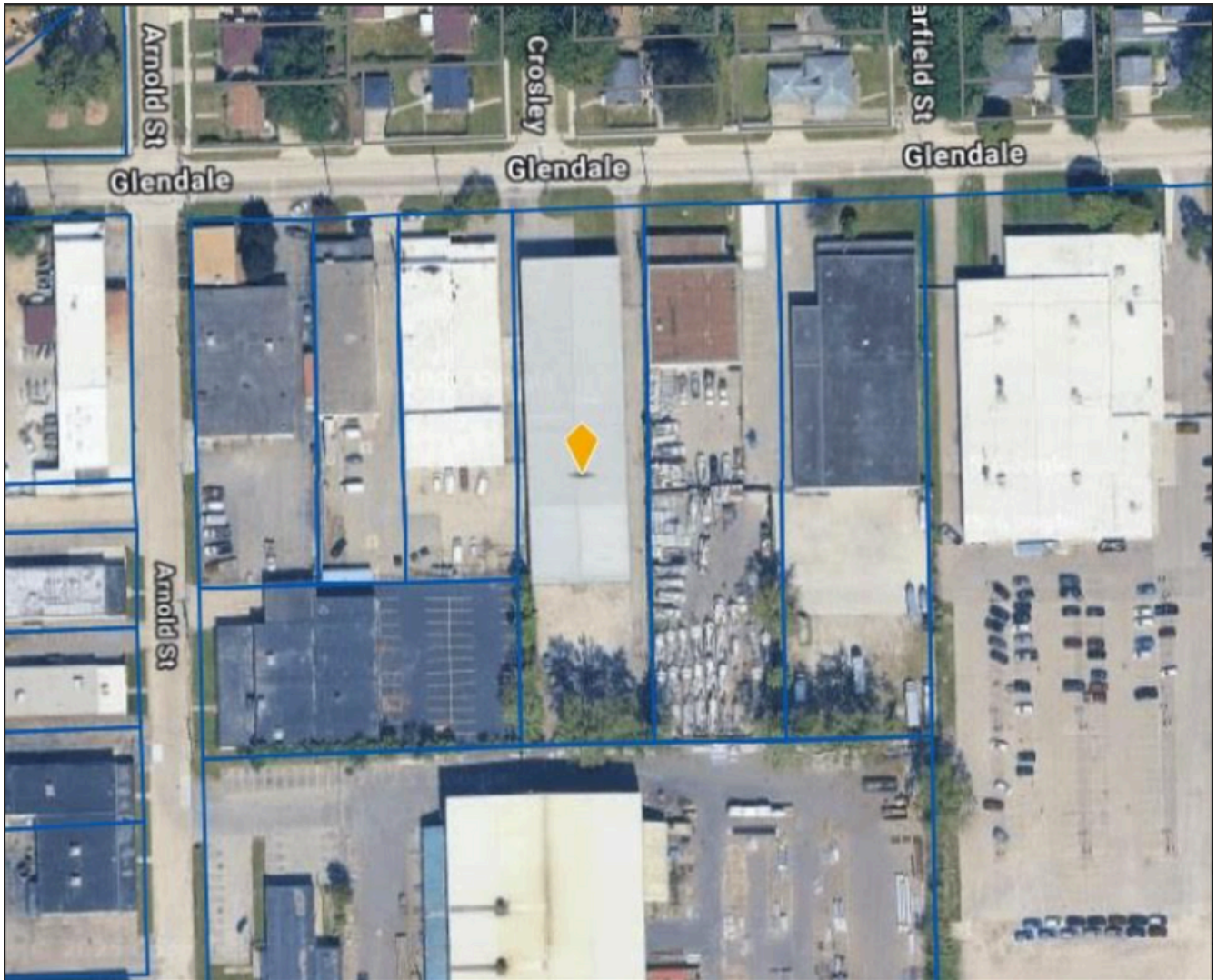
SURVEY



FOR MORE INFORMATION CONTACT:
MARK LUSKY 248-624-7200

Information contained herein is subject to verification and no liability for errors or omissions is assumed.
Price is subject to change and listing may be withdrawn without notice.

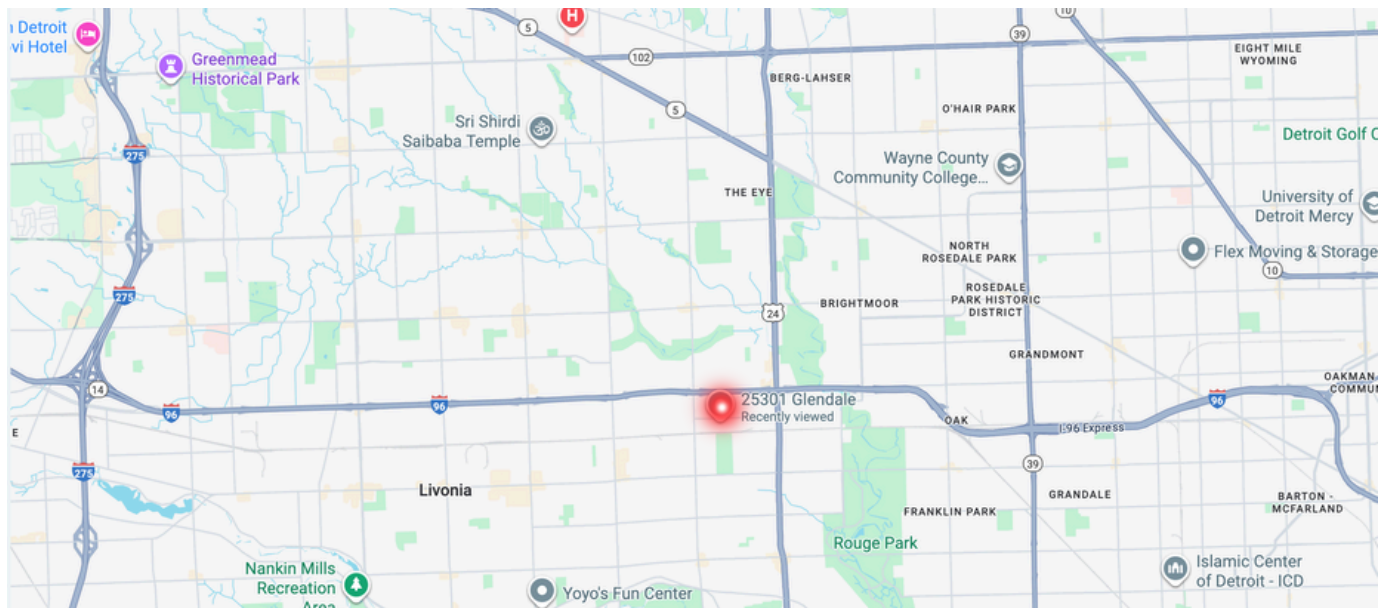
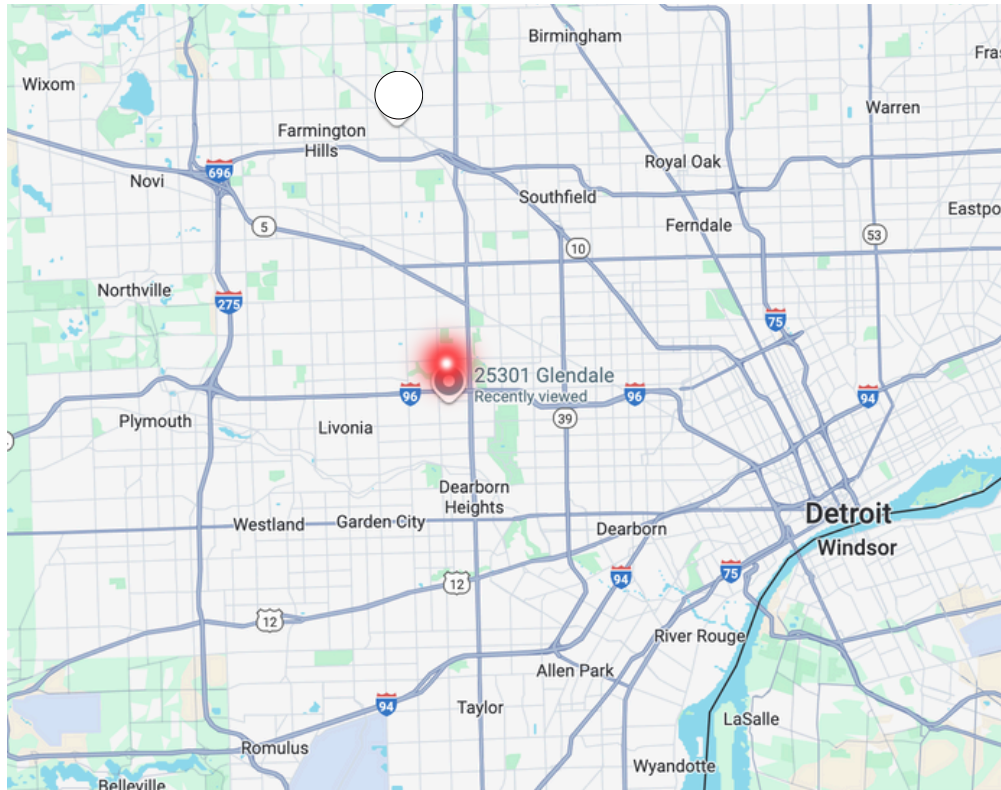
AERIAL



FOR MORE INFORMATION CONTACT:
MARK LUSKY 248-624-7200

Information contained herein is subject to verification and no liability for errors or omissions is assumed.
Price is subject to change and listing may be withdrawn without notice.

MAPS



FOR MORE INFORMATION CONTACT:
MARK LUSKY 248-624-7200

Information contained herein is subject to verification and no liability for errors or omissions is assumed.
Price is subject to change and listing may be withdrawn without notice.