

# NEW RETAIL DEVELOPMENT PLYMOUTH



MID-AMERICA®  
Real Estate-Michigan, Inc.

## FOR LEASE

40700 Ann Arbor Road / Plymouth, MI



RETAIL OPPORTUNITY

# NEW RETAIL DEVELOPMENT - PLYMOUTH



## Address

40700 Ann Arbor Road  
Plymouth, MI 48170

## Availability

### 2-Building Development

**B-1: 3,889 SF**

**B-2: 2,230 SF + Drive-Thru**

## Features

- Alrig USA has plans to establish a two-building development in place of the former fitness facility, located at the northeast quadrant of Ann Arbor and Haggerty Roads in Plymouth, Michigan.
- The development shall consist of a 3,889 SF proposed auto-wash and a 2,230 SF building with a drive-thru, available for occupancy in Q3 2023.
- Notable area tenants include Henry Ford Medical Center, LA Fitness, Tropical Smoothie, AT&T, Chipotle Mexican Grill, and Xfinity.
- Excellent freeway access to I-275 via Exit 28, Ann Arbor Road.
- Pylon signage available on Ann Arbor Road.

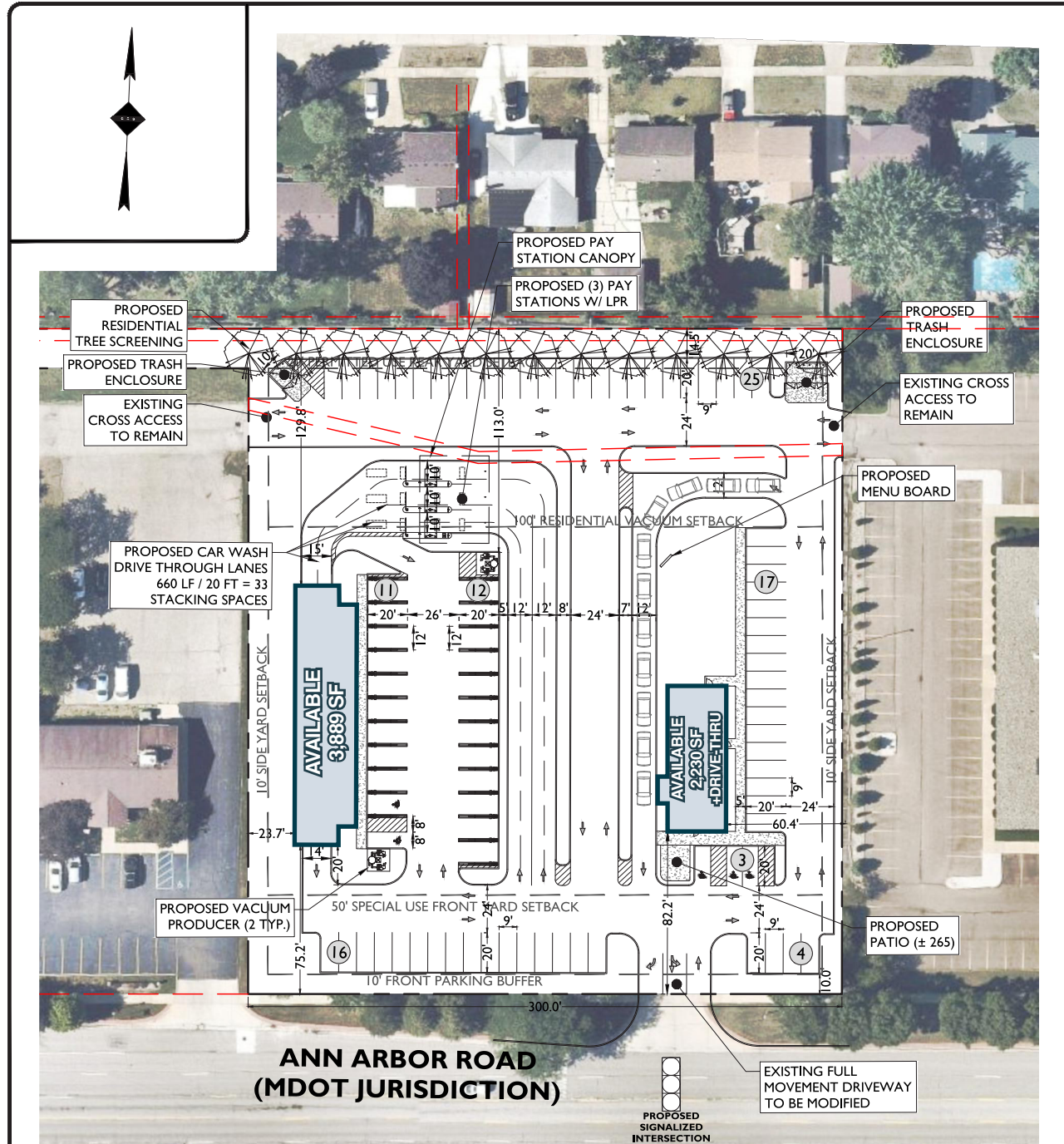
## Area Tenants



## Demographics (2022)

	1 MILE	3 MILES	5 MILES
POPULATION	9,475	80,551	225,799
HOUSEHOLDS	4,618	35,702	93,828
AVG HOUSEHOLD INCOME	\$90,249	\$109,613	\$120,886
DAYTIME POPULATION	9,649	99,321	249,342

# NEW RETAIL DEVELOPMENT - PLYMOUTH



# NEW RETAIL DEVELOPMENT - PLYMOUTH



AERIAL

# NEW RETAIL DEVELOPMENT - PLYMOUTH



Faith  
Fruciano

Mid-America Real Estate -  
Michigan, Inc.  
T: 248.855.6800  
[FFruciano@MidAmericaGrp.com](mailto:FFruciano@MidAmericaGrp.com)

Gabe  
Schuchman

Mid-America Real Estate -  
Michigan, Inc.  
T: 248.855.6800  
[GSchuchman@MidAmericaGrp.com](mailto:GSchuchman@MidAmericaGrp.com)



38500 Woodward Ave, Suite 100  
Bloomfield Hills, Michigan 48304  
248.855.6800  
[MidAmericaGrp.com](http://MidAmericaGrp.com)

Developed By:

