

FOR LEASE

**5040**  
n 15th ave

PHOENIX | AZ

Camelback Medical Plaza

**CBRE**



# PROPERTY summary

## AVAILABLE suite FOR LEASE

- » Suite 101 ±2,636 RSF
- » Lease Rate  
\$25.50/SF/Year  
Full Service Gross



## AREA HIGHLIGHTS

- ◆ Convenient location in the Camelback corridor
- ◆ Monument Signage with visibility from Camelback Road
- ◆ 5.34/1,000 SF Parking Ratio
- ◆ Adjacent to Metro Light Rail
- ◆ Building recently renovated
- ◆ Several hospitals nearby
- ◆ Excellent Tenant mix

**CBRE**

Camelback Medical Plaza | 5040 N 15th AVE | Phoenix, AZ



# LOCATION

# 5040

n 15th ave

Tempe

Uptown Phoenix

Downtown Phoenix



Light Rail

N 15th Ave

W Camelback Rd

N 15th Ave

16th Ave



Not to Scale

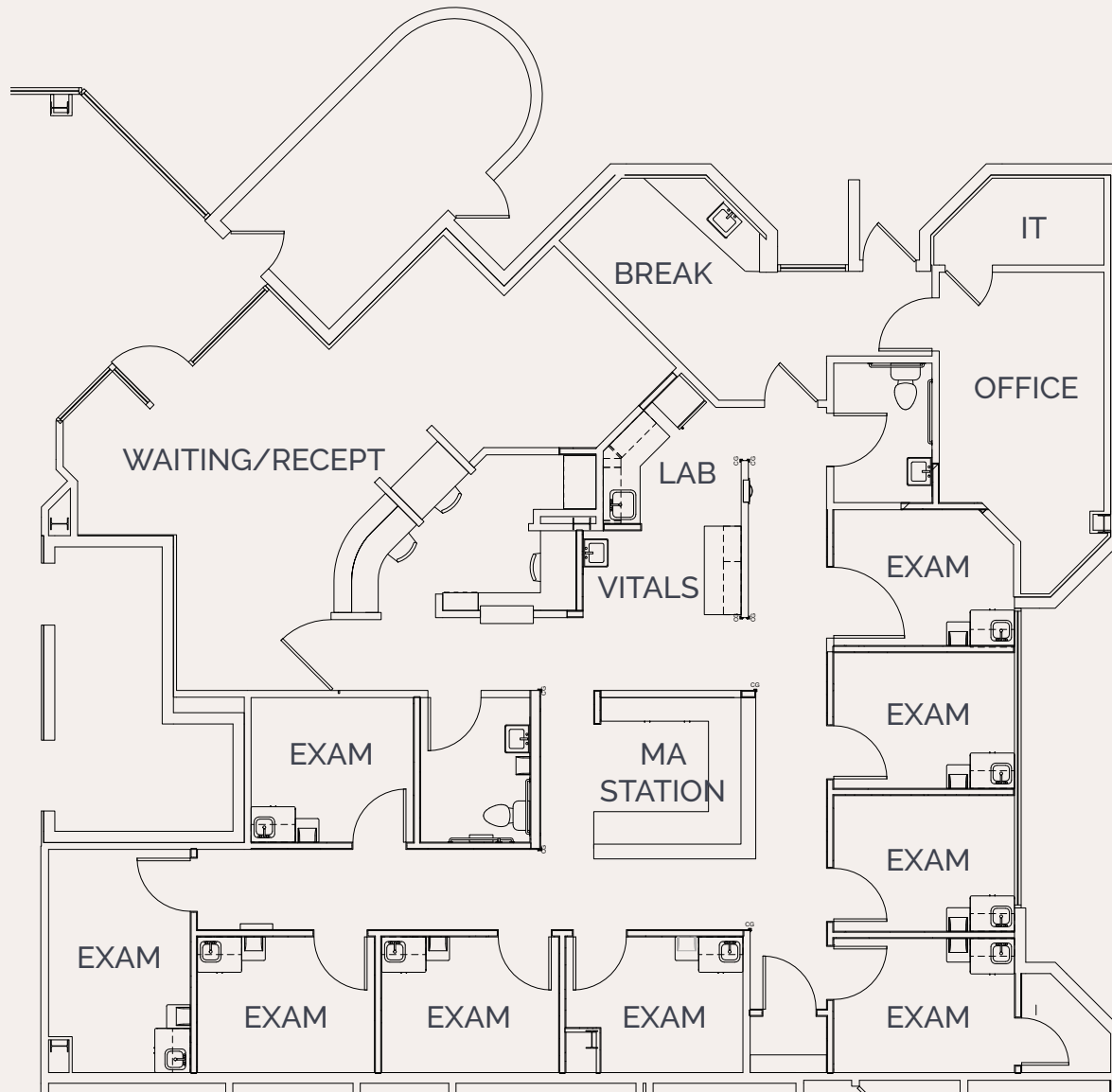
# CBRE

CAMELBACK MEDICAL PLAZA

suite  
**101**

**±2,636**  
RSF

**SUITE**  
FLOOR PLAN



NOT TO SCALE

# LOCATION



Camelback Mountain

Downtown Scottsdale

Tempe

Downtown Phoenix

Light Rail

W. Camelback Rd

N 15th Ave

N 15th Ave



**5040**  
n 15th ave

CAMELBACK MEDICAL PLAZA

**CBRE**

# LOCATION

Tempe

Downtown Phoenix



Light Rail

W Camelback Rd

N 15th Ave

N 15th Ave

N  
Not to Scale

FOR LEASE

**5040**  
n 15th ave

PHOENIX | AZ

## CONTACT US

**Philip Wurth, CCIM**

+1 602 369 9261

[philip.wurth@cbre.com](mailto:philip.wurth@cbre.com)

**Jamie Swirtz**

+1 602 735 5630

[jamie.swirtz@cbre.com](mailto:jamie.swirtz@cbre.com)

© 2026 CBRE, Inc. All rights reserved. This information has been obtained from sources believed reliable, but has not been verified for accuracy or completeness. You should conduct a careful, independent investigation of the property and verify all information. Any reliance on this information is solely at your own risk. CBRE and the CBRE logo are service marks of CBRE, Inc. All other marks displayed on this document are the property of their respective owners, and the use of such logos does not imply any affiliation with or endorsement of CBRE. Photos herein are the property of their respective owners. Use of these images without the express written consent of the owner is prohibited.

**CBRE**



**Camelback Medical Plaza**