

# FOR SALE ±5 ACRES



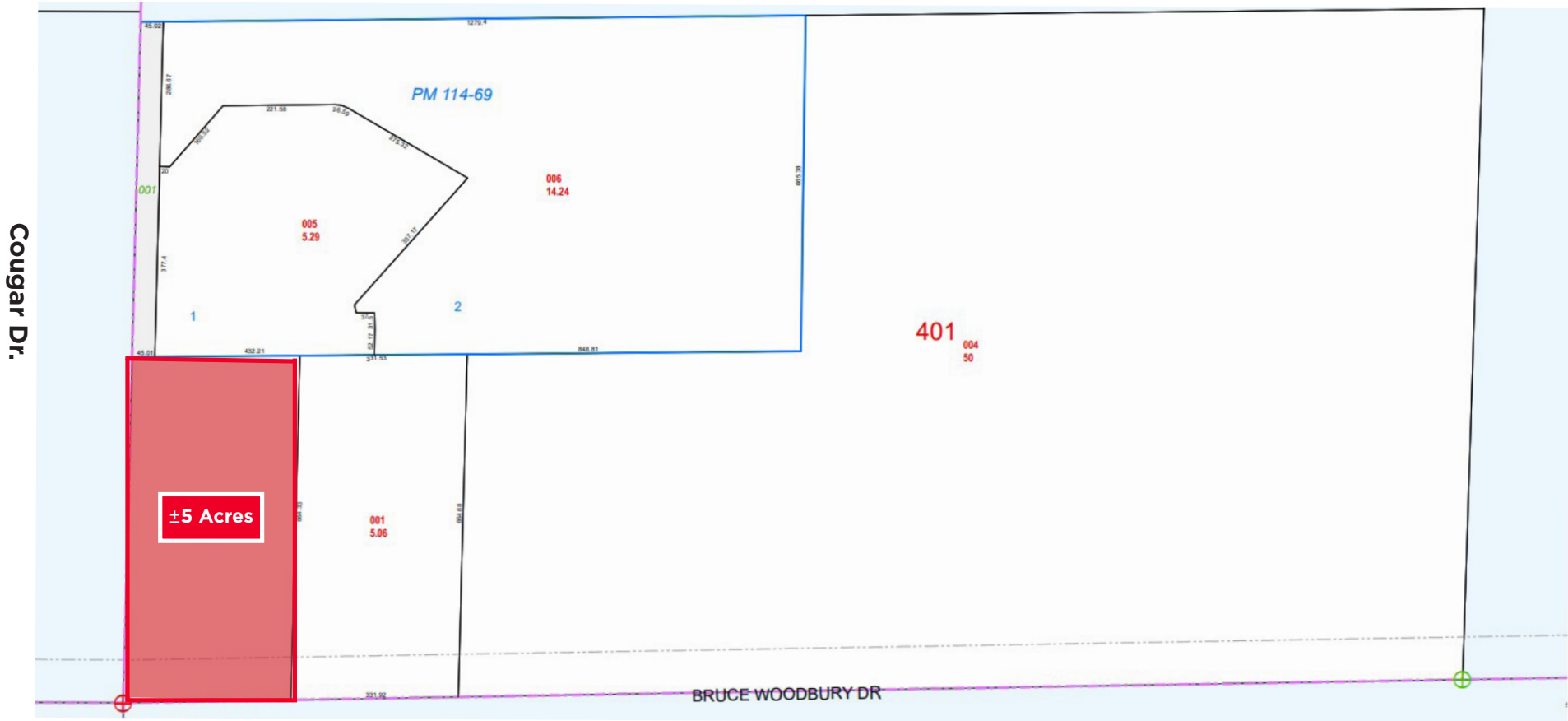
**COUGAR DR. & W. BRUCE WOODBURY DR.**  
**LAUGHLIN, NV 89029**

# PROPERTY HIGHLIGHTS

- + ±5 Acres For Sale
- + APN: 264-15-401-002
- + Site Condition: Flat Topography
- + Planned Land Use: Public Facilities
- + Zoning: R-U (Rural Open Land)
- + Jurisdiction: CC Laughlin
- + Easily Accessible To NV-163 & US-95
- + Call For Pricing

## NEIGHBORS





## CONTACT INFORMATION



**Jason Griffis, SIOR**

Senior Director  
 +1 702 205 3861  
 jason.griffis@cushwake.com  
 LIC #S.0178374



**Alma Cuevas, SIOR**

Senior Director  
 +1 702 303 4412  
 alma.cuevas@cushwake.com  
 LIC #S.0180089.LLC



**Michael Scher**

Associate  
 +1 615 319 9963  
 michael.scher@cushwake.com  
 LIC #S.01189923

6725 Via Austi Pkwy, Suite 275 | Las Vegas, NV 89119 | Main +1 702 796 7900 | Fax +1 702 796 7920 | [cushmanwakefield.com](http://cushmanwakefield.com)

©2024 Cushman & Wakefield. All rights reserved. The information contained in this communication is strictly confidential. This information has been obtained from sources believed to be reliable but has not been verified. NO WARRANTY OR REPRESENTATION, EXPRESS OR IMPLIED, IS MADE AS TO THE CONDITION OF THE PROPERTY (OR PROPERTIES) REFERENCED HEREIN OR AS TO THE ACCURACY OR COMPLETENESS OF THE INFORMATION CONTAINED HEREIN, AND SAME IS SUBMITTED SUBJECT TO ERRORS, OMISSIONS, CHANGE OF PRICE, RENTAL OR OTHER CONDITIONS, WITHDRAWAL WITHOUT NOTICE, AND TO ANY SPECIAL LISTING CONDITIONS IMPOSED BY THE PROPERTY OWNER(S). ANY PROJECTIONS, OPINIONS OR ESTIMATES ARE SUBJECT TO UNCERTAINTY AND DO NOT SIGNIFY CURRENT OR FUTURE PROPERTY PERFORMANCE.

