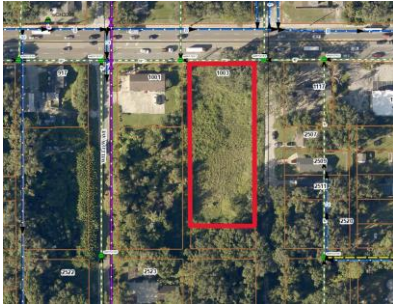
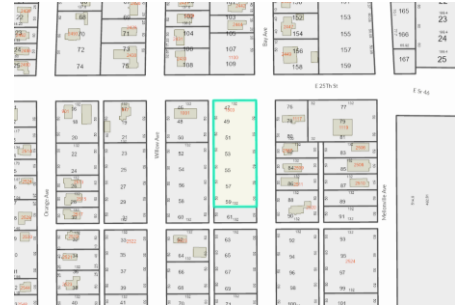


1003 E 25th Street

Sanford, FL 32771

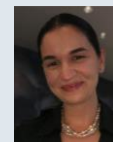
\$4000.00 AbsoluteNNN



Discover a rare opportunity to lease 1.01-acre parcel of vacant land, zoned as R11 Industrial use. Nestled on E 25th St /State Road 46, this land is located near downtown Sanford on the outer perimeter of Sanford International Airport. The lot is conveniently located near essential amenities, including schools, airport, shopping center and recreational areas only a short 5-minute drive (3 miles) to the nearest Publix built in late 2023.

Key Features:

- Lease Amount: \$4000 AbsoluteNNN (5-10 Year Minimum)
- Corner Lot of Bay & SR 46 (25th Street)
- 1.01 Acre Zoned R11 40:Vac Industrial General
- On Highly Visible SR46 132x333 Size Lot
- Listing Agent/Owner



LISTING AGENT

Marilyn Giordano

Mobile: (954) 295-5186

Office: (786) 651-7861

Grand Realty of America
19300 W Dixie Hwy, Suite 12
North Miami Beach, FL 33180

www.grandrealtyofamerica.com

