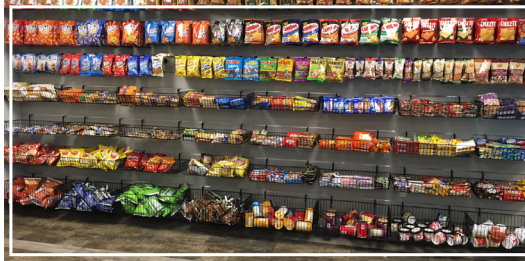


STONERIDGE I

41100 WOODWARD AVENUE, BLOOMFIELD HILLS



PREMISES

- Three-story, 150,000 SF office building with two connected wings

AVAILABILITY

- 1st Floor: 22,018 SF
- 2nd Floor: 23,954 SF
- 3rd Floor: 26,545 SF (divisible)
- ENTIRE WEST (41100) BUILDING

RENTAL RATE

- \$19.95 psf
- 2024 Base Year, plus electricity

FEATURES AND AMENITIES

- **PROMINENT BUILDING SIGNAGE AVAILABLE**
- Fully-equipped fitness center with Peloton bikes
- NEW OPERATOR SOON: Micro-market, grab n' go food service.
- Magnificent wooded setting in the heart of Bloomfield Hills
- Inviting three-story rotunda lobbies and recently renovated common areas and restrooms
- Convenient points of entry, including walk-out access on both first and second floors
- Well-lit parking with adjacent 2-level covered parking deck
- Computerized security/entry access
- Convenient I-75 access less than a mile away
- Nearby hotels and fine restaurants

FOR MORE INFORMATION

Daniel Canvasser
Jack Bergmann
Wade Lorimer
Newmark | nmrk.com
248.350.9500

Dan Leppink
Kojaian Management Corporation
dleppink@kojaian.com
248.644.7600

NEWMARK

MORE THAN
BUILDINGS

LOCATION | BUSINESS | IMAGE | SUCCESS

KOJAIANO
KOJAIAN.COM

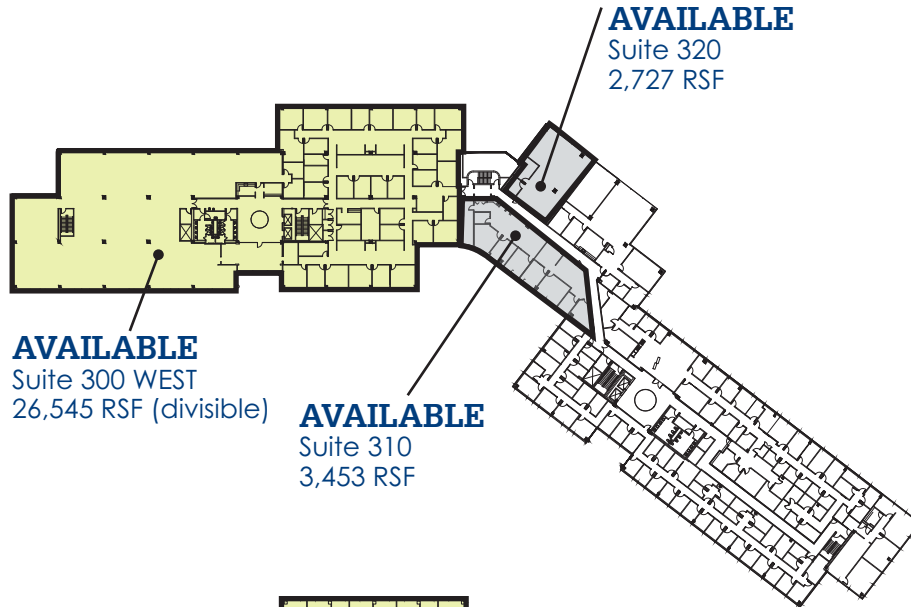
STONERIDGE I

41 100 WOODWARD AVENUE, BLOOMFIELD HILLS

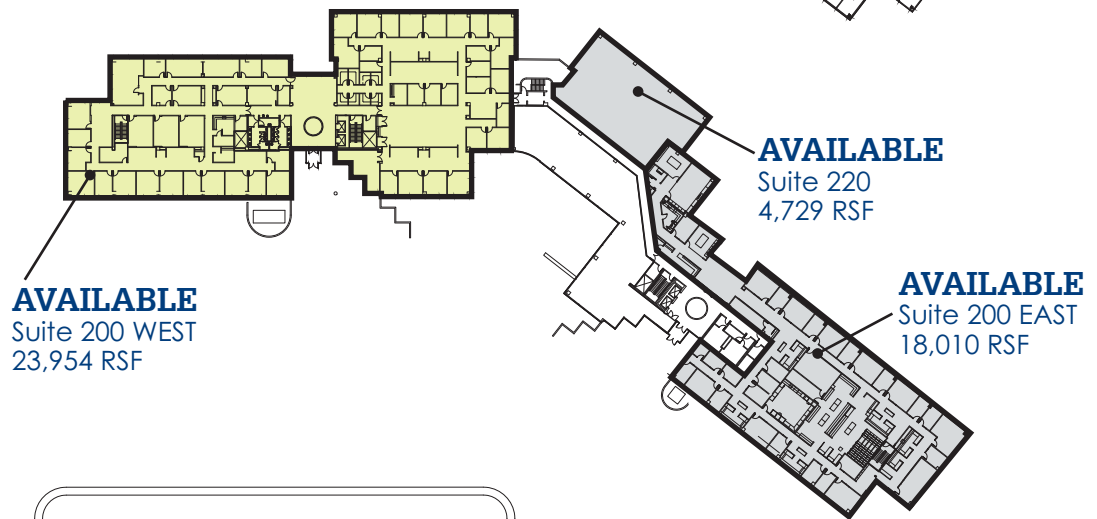
 41100 WOODWARD AVENUE -AVAILABILITY

 41000 WOODWARD AVENUE -AVAILABILITY

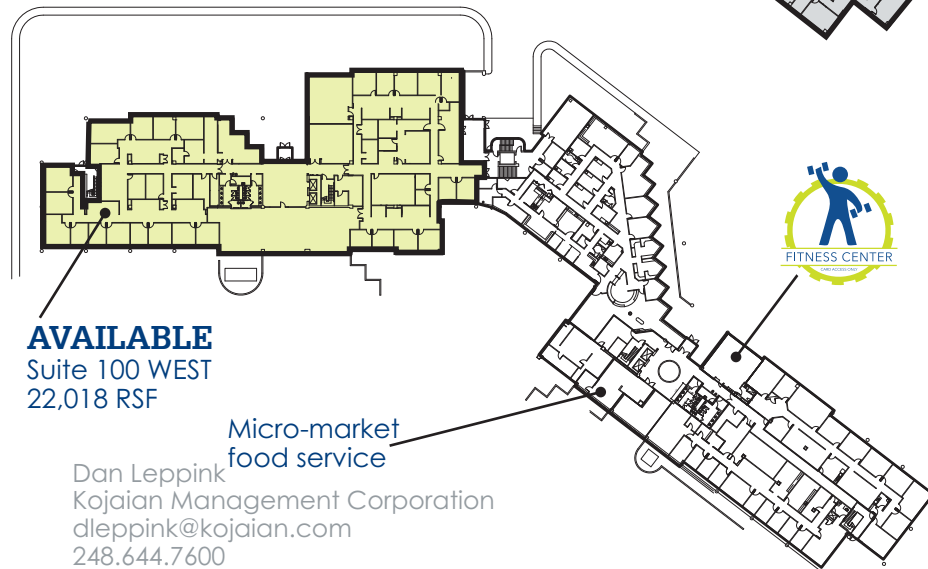
THIRD FLOOR



SECOND FLOOR



GROUND FLOOR



FOR MORE INFORMATION

Daniel Canvasser
Jack Bergmann
Wade Lorimer
Newmark | nmrk.com
248.350.9500

Dan Leppink
Kojaian Management Corporation
dleppink@kojaian.com
248.644.7600