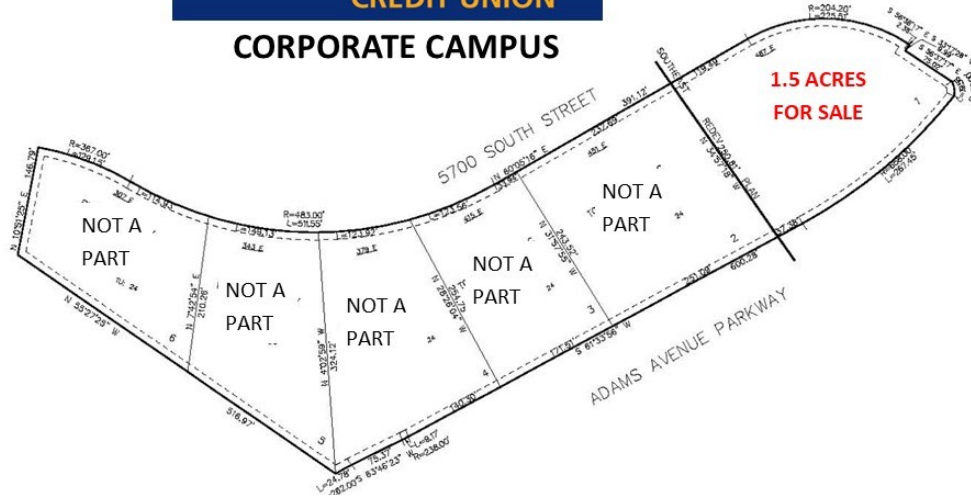


FOR LEASE

Pleasant Valley Pad



CORPORATE CAMPUS



5700 S. Adams Pkwy, Washington Terrace, UT

Property Information:

- For sale 1.5 acre pad
- Located next to Goldenwest’s corporate campus
- .25 mile from Ogden Regional Hospital
- Excellent access to I-84 & Highway 89

Demographics

Population	1 Mile	3 Mile	5 Mile
2023 Estimated	8,573	56,841	184,908
2028 Projected	8,812	63,936	198,460
Households	1 Mile	3 Mile	5 Mile
2023 Estimated	3,160	21,118	64,786
2028 Projected	3,229	21,937	67,934
Income	1 Mile	3 Mile	5 Mile
2023 Est. Avg HH	\$138,982	\$119,653	\$108,516
2023 Est Med HH	\$110,323	\$95,248	\$71,425

Lisa Vandersteen

lisav@amsource.com

801.741.4530



FOR SALE

Pleasant Valley Pad



1.5 acres available for sale

Lisa Vandersteen
lisav@amsource.com
801.741.4530

