



**EQT | EXETER**

**10+ MEGAWATTS OF POWER ACHIEVABLE!**



# 4800 Corporation Drive

Fayetteville, NC

Building Size: 506,363 SF | 506,363 SF of Industrial Space Available

VISIT [EQTEXETER.COM](http://EQTEXETER.COM)

# 4800 Corporation Drive

Fayetteville, NC

**Building Size:** 506,363 SF | **Building Availability:** 506,363 SF

## Building Specifications

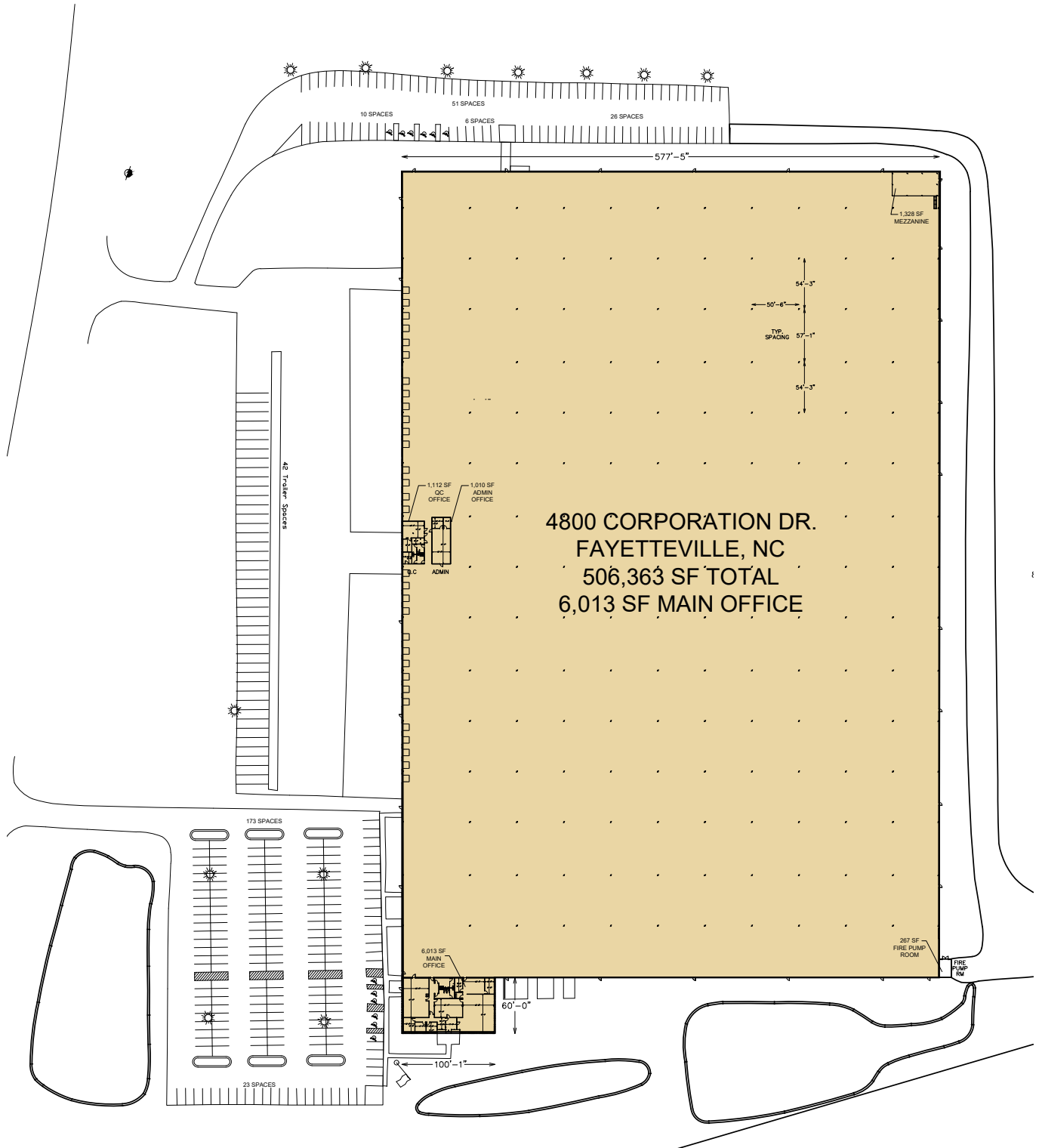
- 506,363 SF available
- 6,013 SF office
- Clear Height: 30' to 35'
- Power: 3,000amp and 2,000amp panel
- Loading: Front load
- Dock Doors: 31 and levelers
- Drive-in Doors: 1
- Fire Protection System: ESFR
- Parking Spaces: 289
- Trailer Storage: 42
- Land for building expansion and additional parking available



# 4800 Corporation Drive

Fayetteville, NC

Building Size: 506,363 SF | Building Availability: 506,363 SF

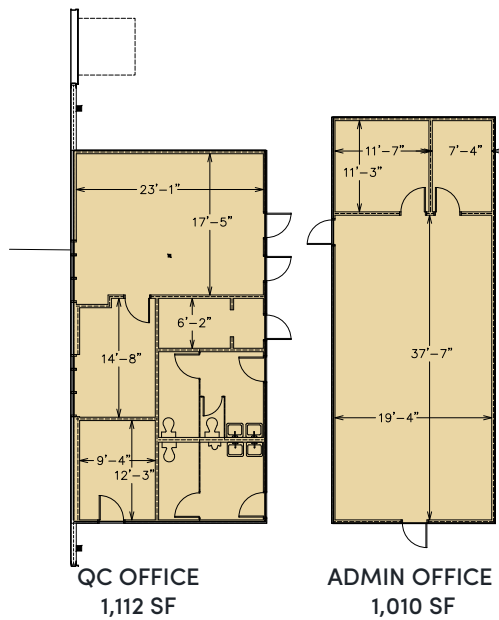
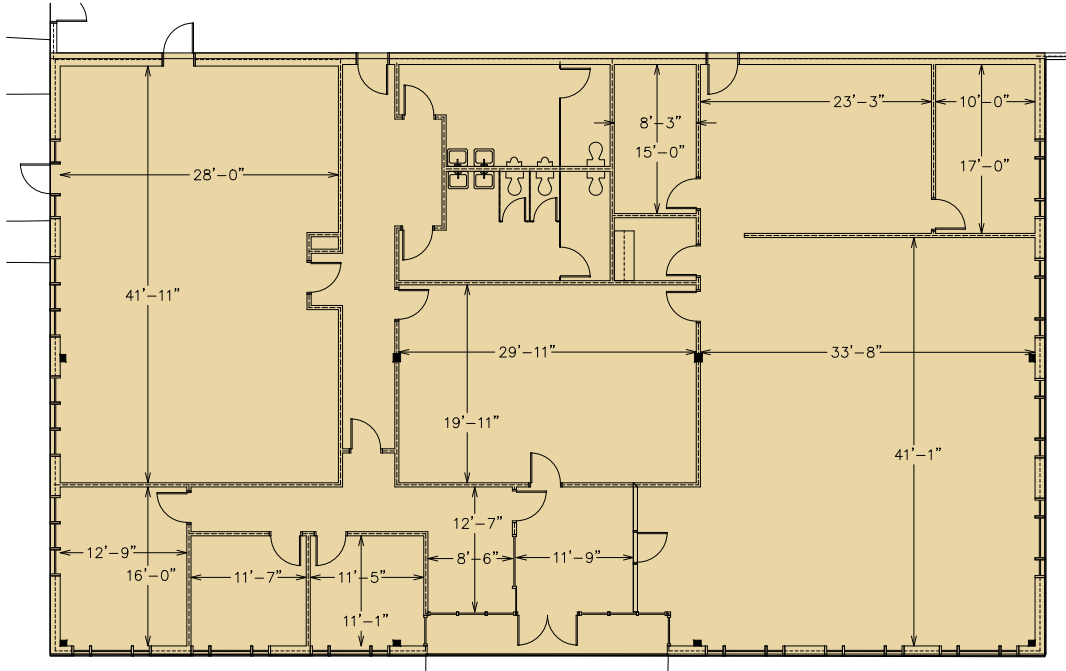


# 4800 Corporation Drive

Fayetteville, NC

Building Size: 506,363 SF | Building Availability: 506,363 SF

## 6,013 SF MAIN OFFICE

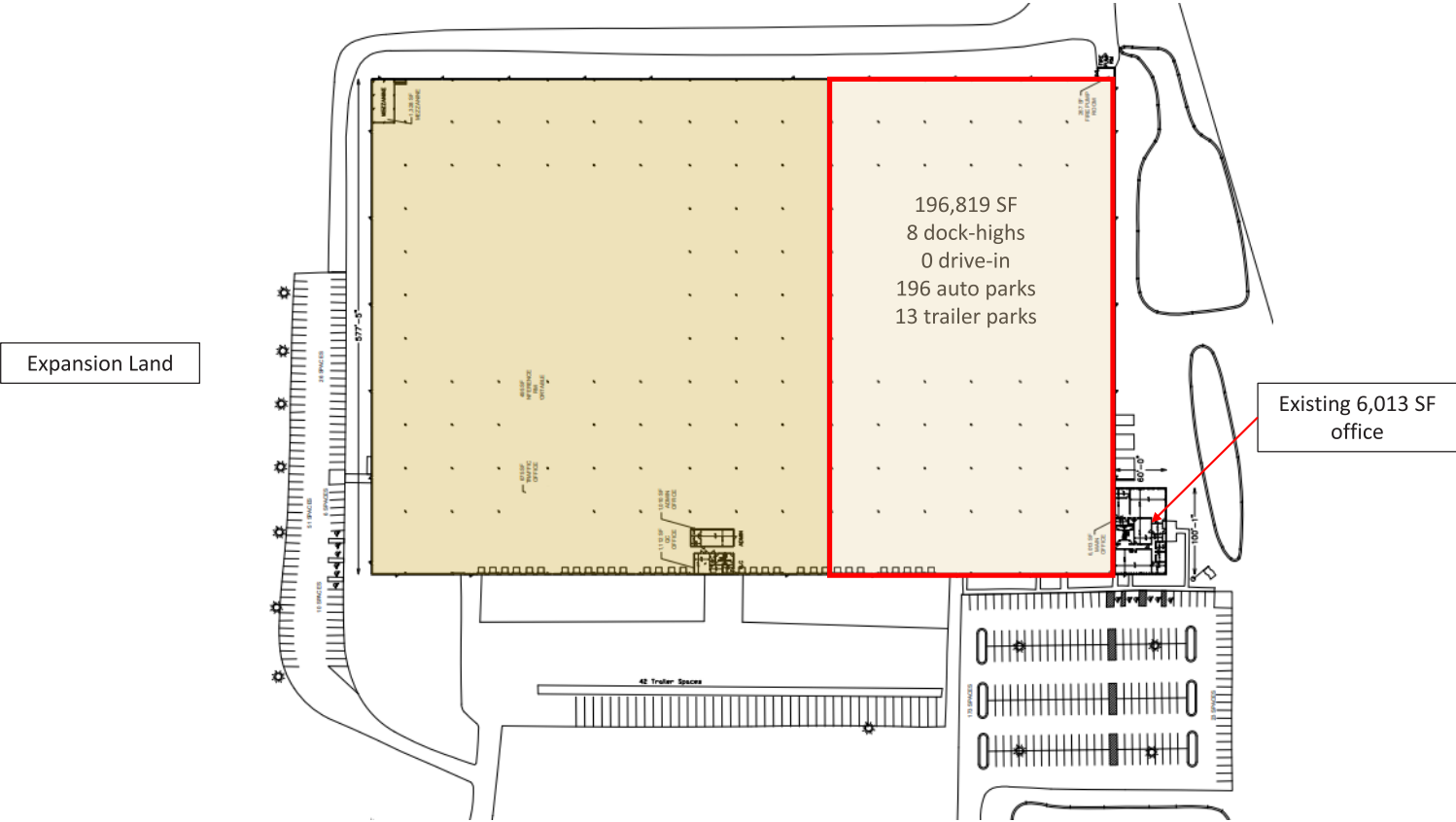


# 4800 Corporation Drive

Fayetteville, NC

Building Size: 506,363 SF | Building Availability: 506,363 SF

## DEMISE OPTION A

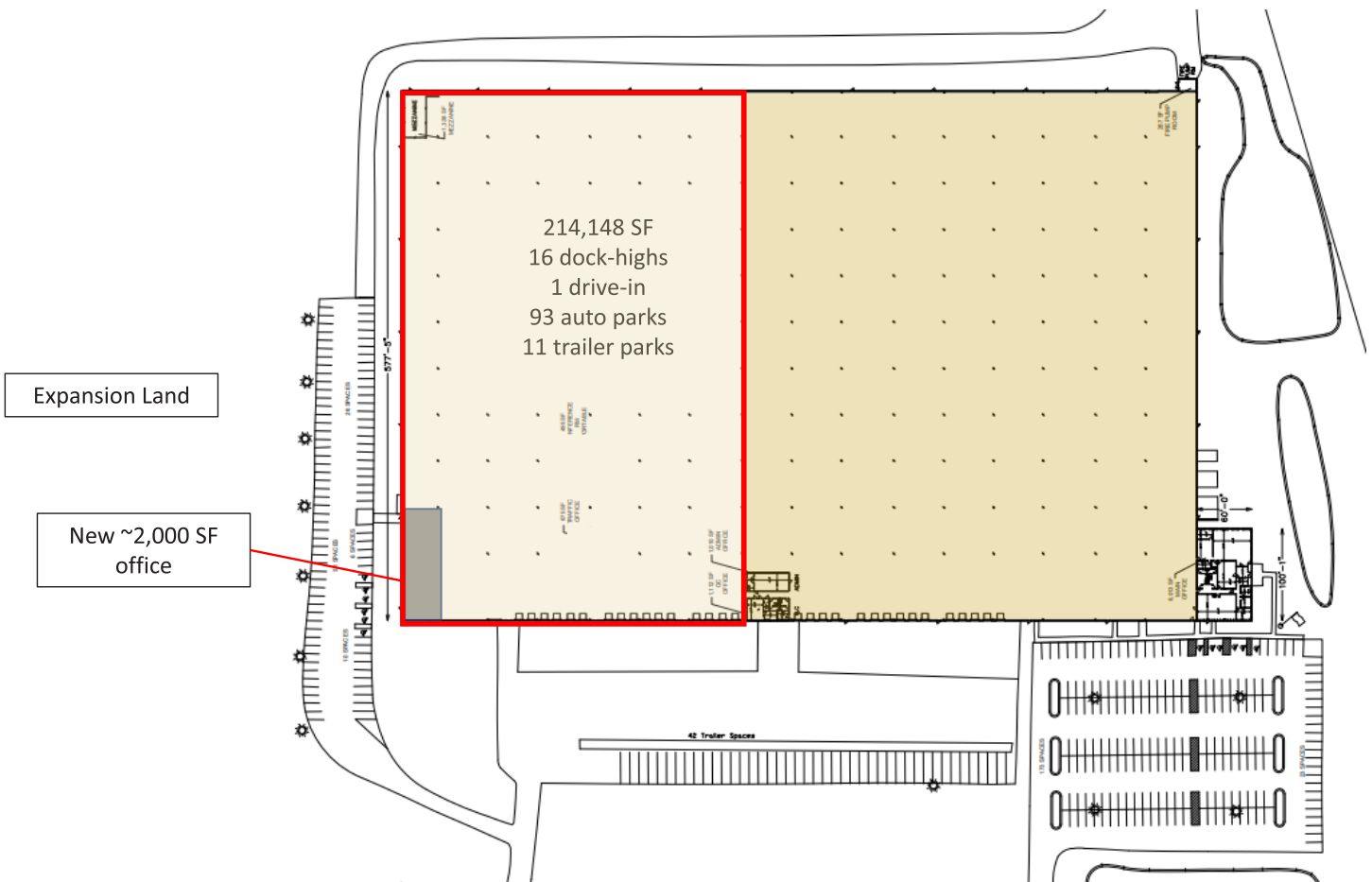


# 4800 Corporation Drive

Fayetteville, NC

Building Size: 506,363 SF | Building Availability: 506,363 SF

## DEMISE OPTION B

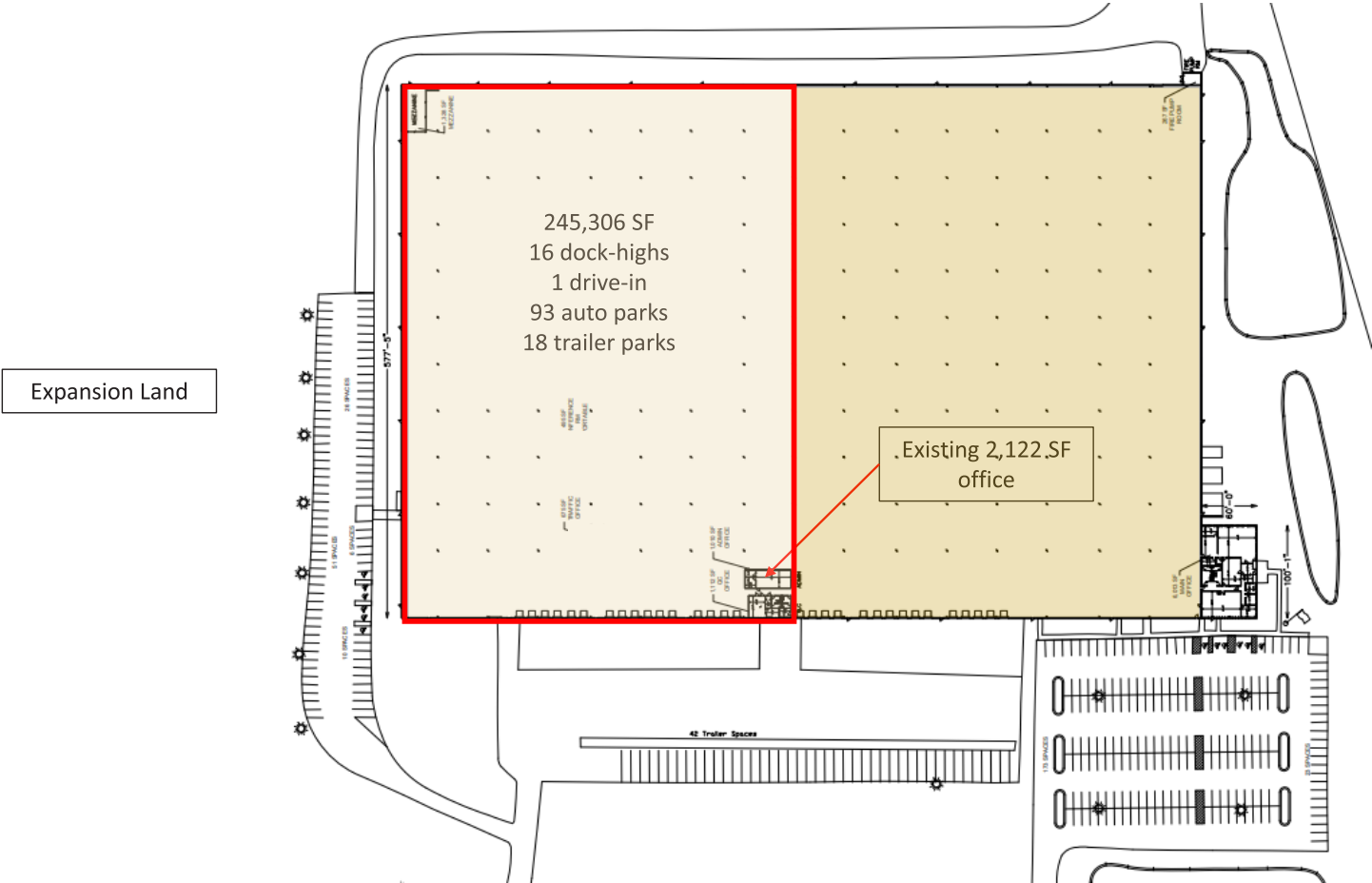


# 4800 Corporation Drive

Fayetteville, NC

Building Size: 506,363 SF | Building Availability: 506,363 SF

## DEMISE OPTION C

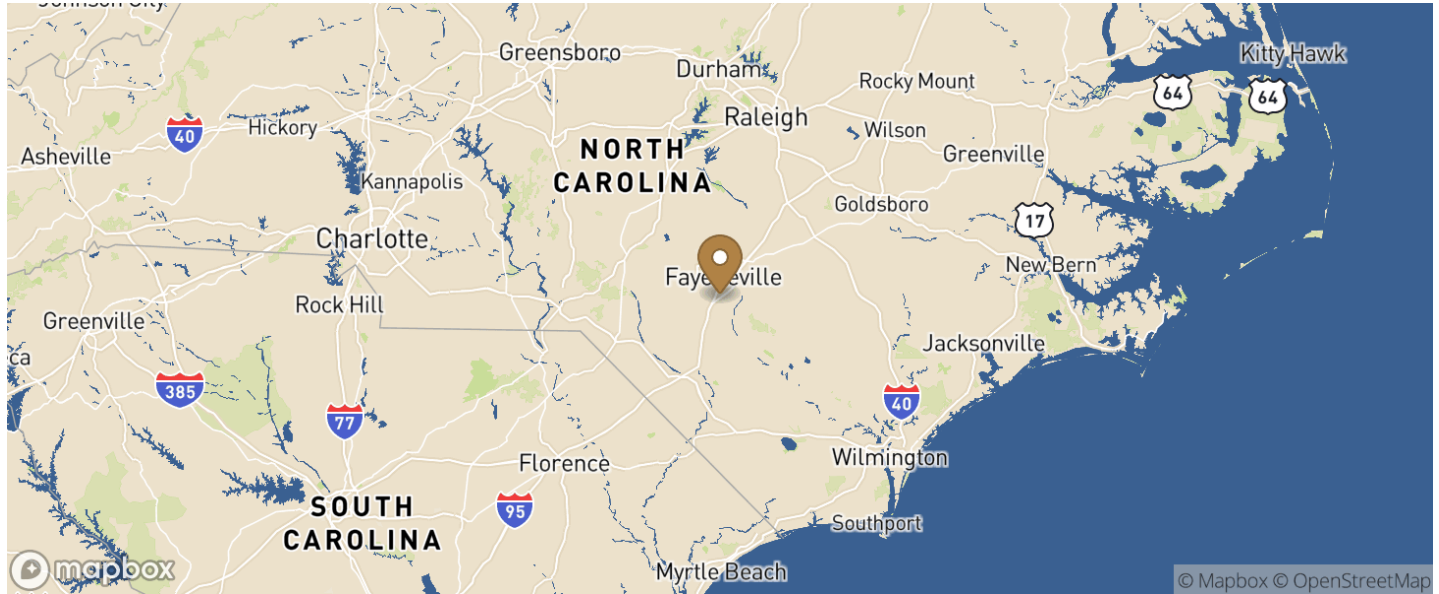


# 4800 Corporation Drive

Fayetteville, NC

**Building Size:** 506,363 SF | **Building Availability:** 506,363 SF

## Location



## Access

CITY	POPULATION	MILES	DRIVE TIME
Charlotte	874,579	151	2 h 41 m
Washington, D.C.	689,545	323	5 h 23 m
Baltimore	585,708	371	6 h 07 m
Jacksonville	949,611	389	5 h 56 m
Philadelphia	1,603,797	468	7 h 54 m
Columbus	905,748	507	8 h 33 m

## Population

ACCESS AND LABOR FORCE	10 MILES
Total Population	207,512
Total Labor Force	95,969
Unemployment Rate	4.83%
Median Household Income	48,857
Warehouse Employees	759
High School Education Or Higher	65.36%