

±12,563 SF

FOR LEASE
\$9.25/SF NNN

SINGLE TENANT WAREHOUSE/OFFICE

2,229 SF OFFICE

5064 LA-311, HOUMA, LA 70360



CONTACTS

BRYCE FRENCH
Senior Vice President
+1 504 427 2090
bryce.french@cbre.com

JACK SIKORA
Senior Associate
+1 504 444 8936
jack.sikora@cbre.com

CBRE

PROPERTY DETAILS



Industrial / Warehouse
Property Type



12,563 Square Feet
Total Size



2,229 SF
Office Size



2000
Year Built



1.03 AC
Acres



4 Roll-Up Doors (1 Van-Height to Fork Dock)
Number of Drive-In / Grade-Level Doors



18' FT
Eave Height



29 Surface Spaces
Car Parking



Private, Gated Yard
Yard



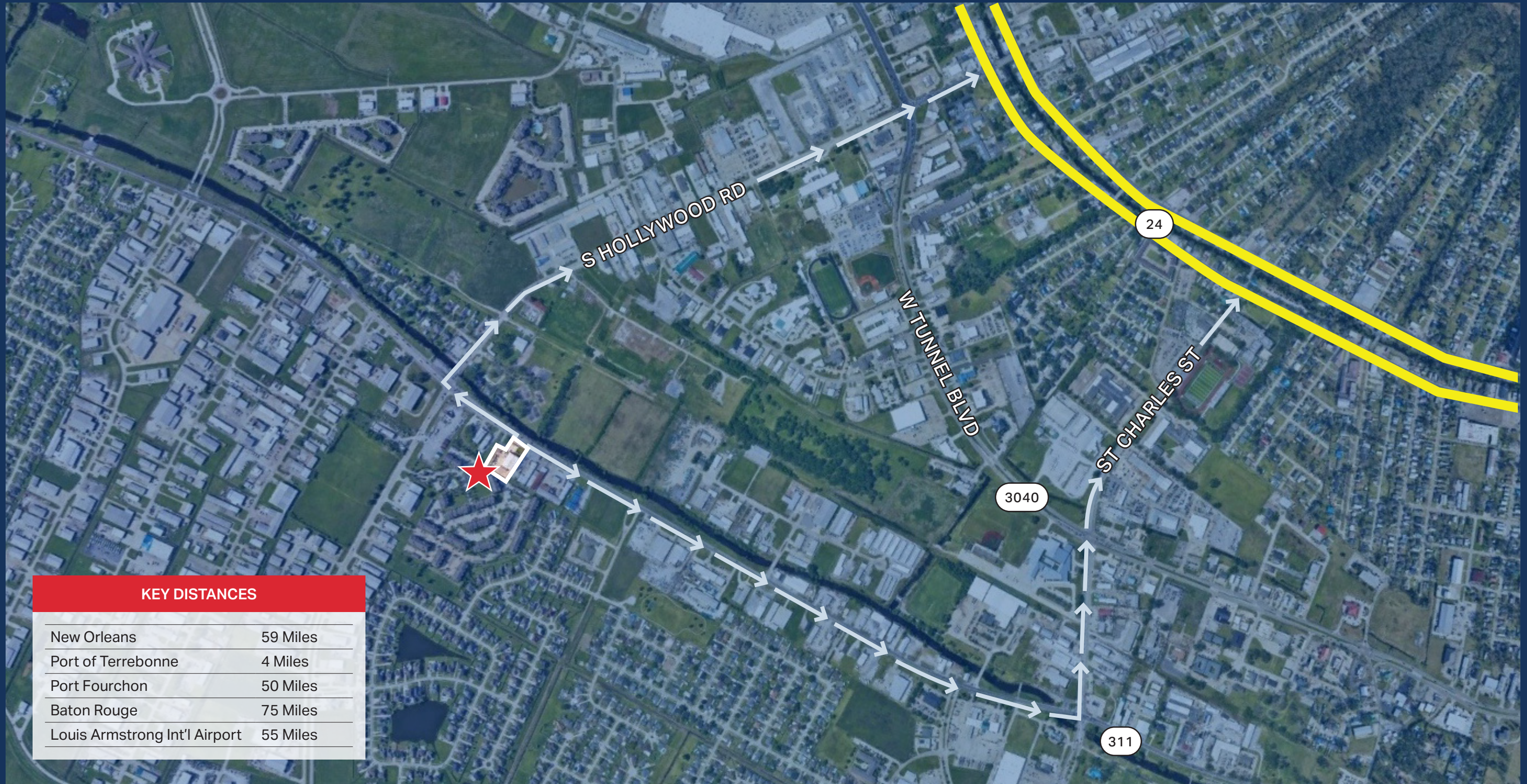
Brick/Metal
Construction Type



M-1 - Light Industrial
Zoning



THE LOCATION



KEY DISTANCES

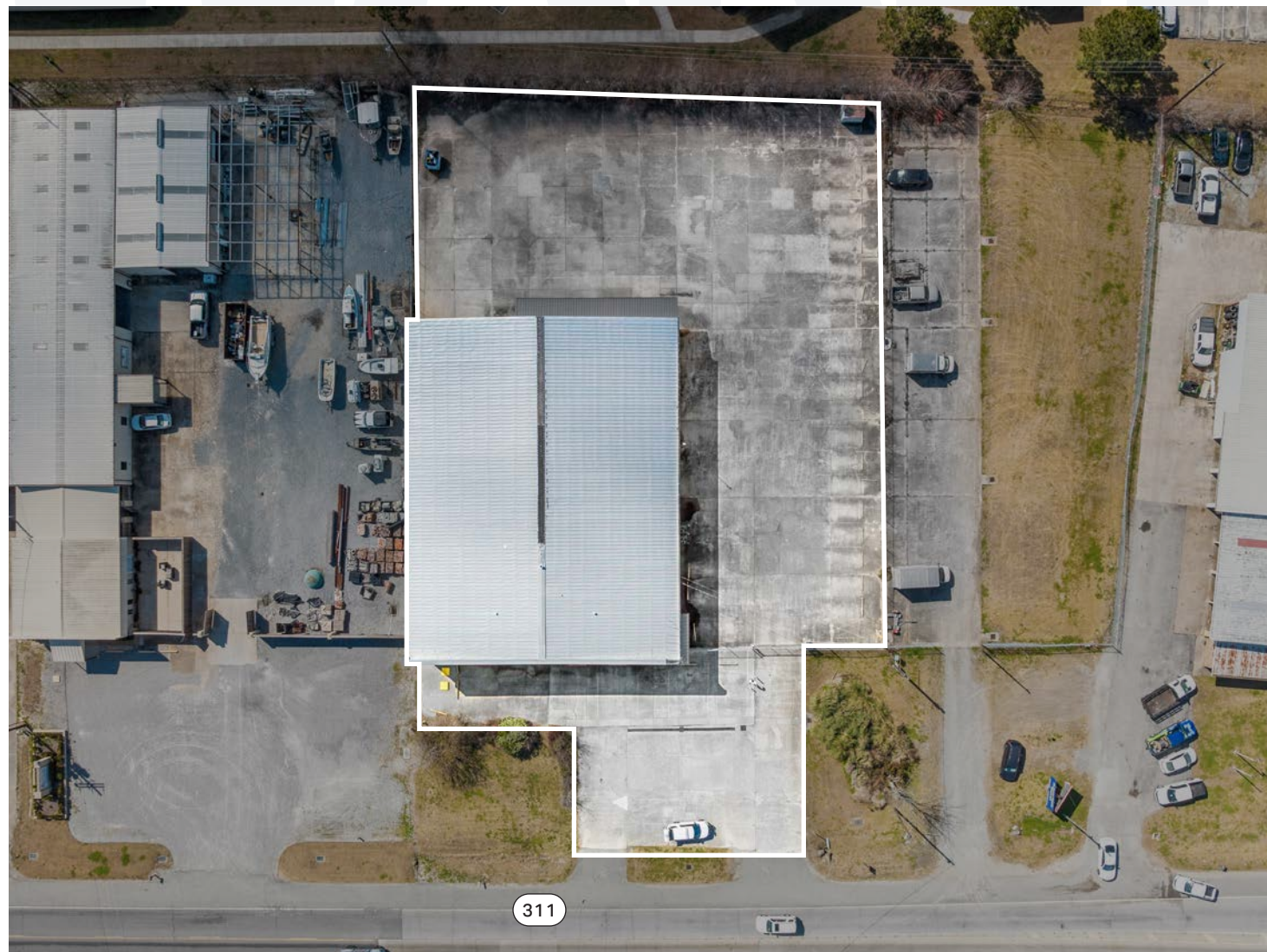
New Orleans	59 Miles
Port of Terrebonne	4 Miles
Port Fourchon	50 Miles
Baton Rouge	75 Miles
Louis Armstrong Int'l Airport	55 Miles

INTERIOR IMAGERY

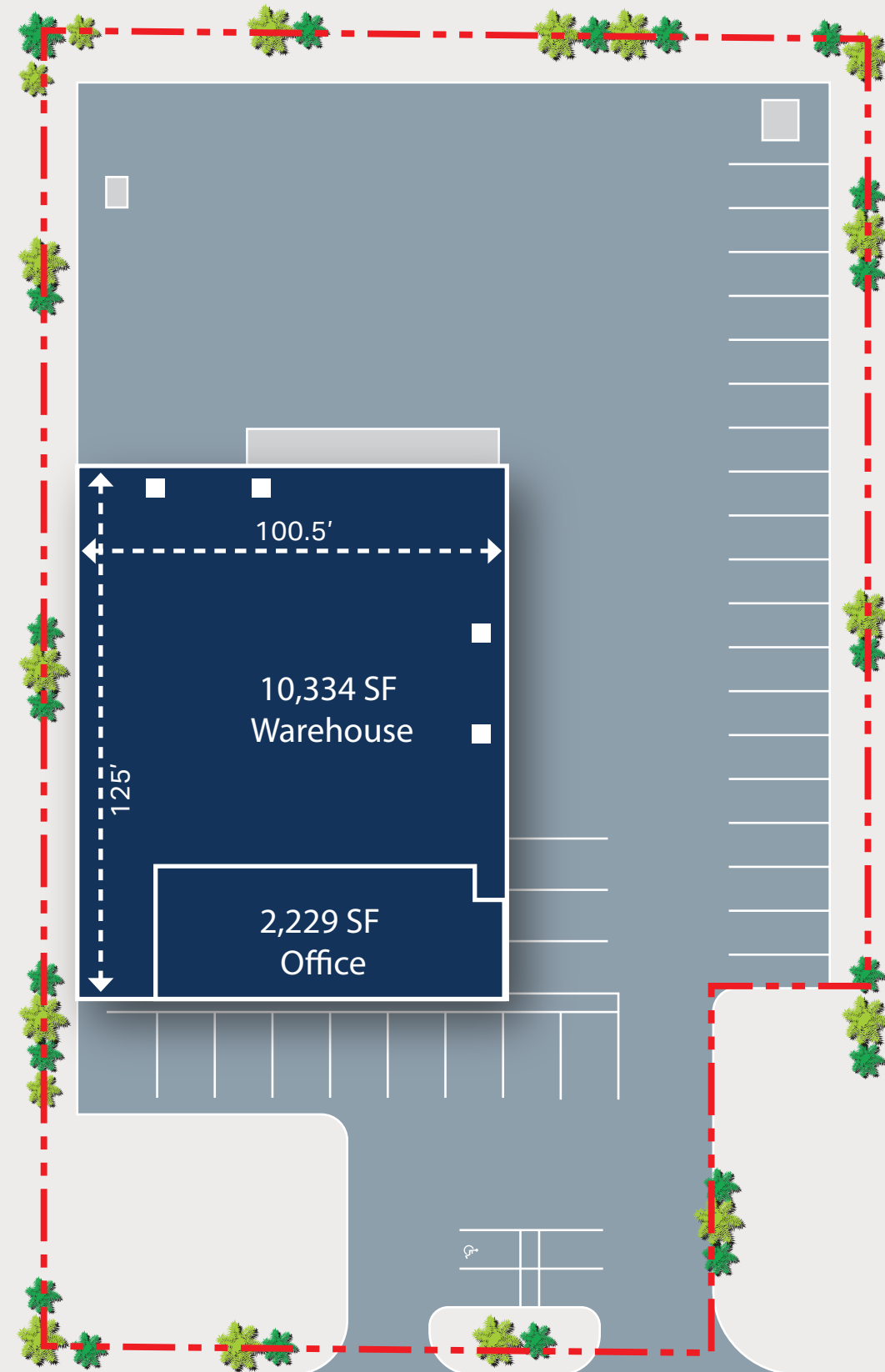


WAREHOUSE

EXTERIOR IMAGERY



SITE PLAN



- ▲ DOCK DOOR
- DRIVE IN DOOR

LITTLE BAYOU BLACK DR

311



±12,563 SF

SINGLE TENANT WAREHOUSE/OFFICE

2,229 SF OFFICE



FOR LEASE
\$9.25/SF NNN

CONTACTS

BRYCE FRENCH

Senior Vice President
+1 504 427 2090
bryce.french@cbre.com

JACK SIKORA

Senior Associate
+1 504 444 8936
jack.sikora@cbre.com

CBRE

© 2026 CBRE, Inc. All rights reserved. This information has been obtained from sources believed reliable, but has not been verified for accuracy or completeness. You should conduct a careful, independent investigation of the property and verify all information. Any reliance on this information is solely at your own risk.

CBRE and the CBRE logo are service marks of CBRE, Inc. All other marks displayed on this document are the property of their respective owners. Photos herein are the property of their respective owners. Use of these images without the express written consent of the owner is prohibited.

5064 LA-311, HOUMA, LA 70360