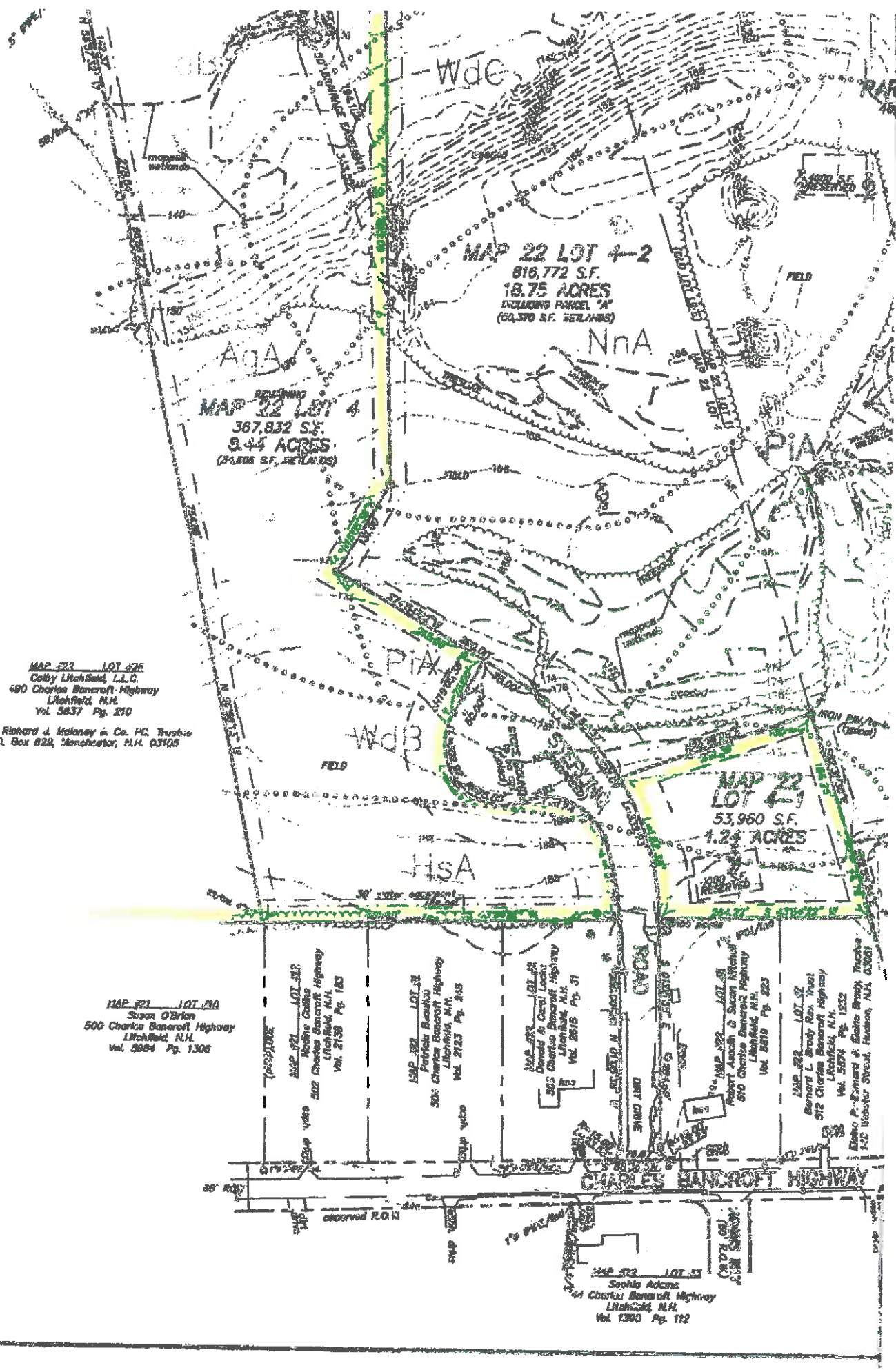


#5



MAP 22 LOT 4-2
 816,772 S.F.
 18.75 ACRES
 INCLUDING PARCEL "A"
 (60,370 S.F. REWARDS)

MAP 32 LOT 4
 367,832 S.F.
 8.44 ACRES
 (24,806 S.F. REWARDS)

MAP 22 LOT 4-1
 53,960 S.F.
 1.23 ACRES

MAP 523 LOT 436
 Colby Litchfield, L.L.C.
 400 Charles Bancroft Highway
 Litchfield, N.H.
 Vol. 5637 Pg. 210

c/o Richard J. Maloney & Co. PC, Trustee
 P.O. Box 628, Manchester, N.H. 03105

MAP 521 LOT 310
 Susan O'Brien
 500 Charles Bancroft Highway
 Litchfield, N.H.
 Vol. 5684 Pg. 1306

MAP 521 LOT 312
 Nadine Coffin
 502 Charles Bancroft Highway
 Litchfield, N.H.
 Vol. 2138 Pg. 163

MAP 522 LOT 31
 Patricia Bousko
 506 Charles Bancroft Highway
 Litchfield, N.H.
 Vol. 2123 Pg. 245

MAP 522 LOT 32
 Dennis & Carol Looze
 505 Charles Bancroft Highway
 Litchfield, N.H.
 Vol. 2615 Pg. 31

MAP 522 LOT 35
 Robert Asselin & Susan Mitchell
 510 Charles Bancroft Highway
 Litchfield, N.H.
 Vol. 5619 Pg. 223

MAP 522 LOT 37
 Bernard L. Brody Rev. Trust
 512 Charles Bancroft Highway
 Litchfield, N.H.
 Vol. 5674 Pg. 1532

Elaine P. Bernard & Elaine Brock Trustee
 100 Webster Street, Hudson, N.H. 03051

MAP 522 LOT 33
 Sophie Adams
 404 Charles Bancroft Highway
 Litchfield, N.H.
 Vol. 1380 Pg. 172

86' R.O.W.

observed R.O.W.

CHARLES BANCROFT HIGHWAY