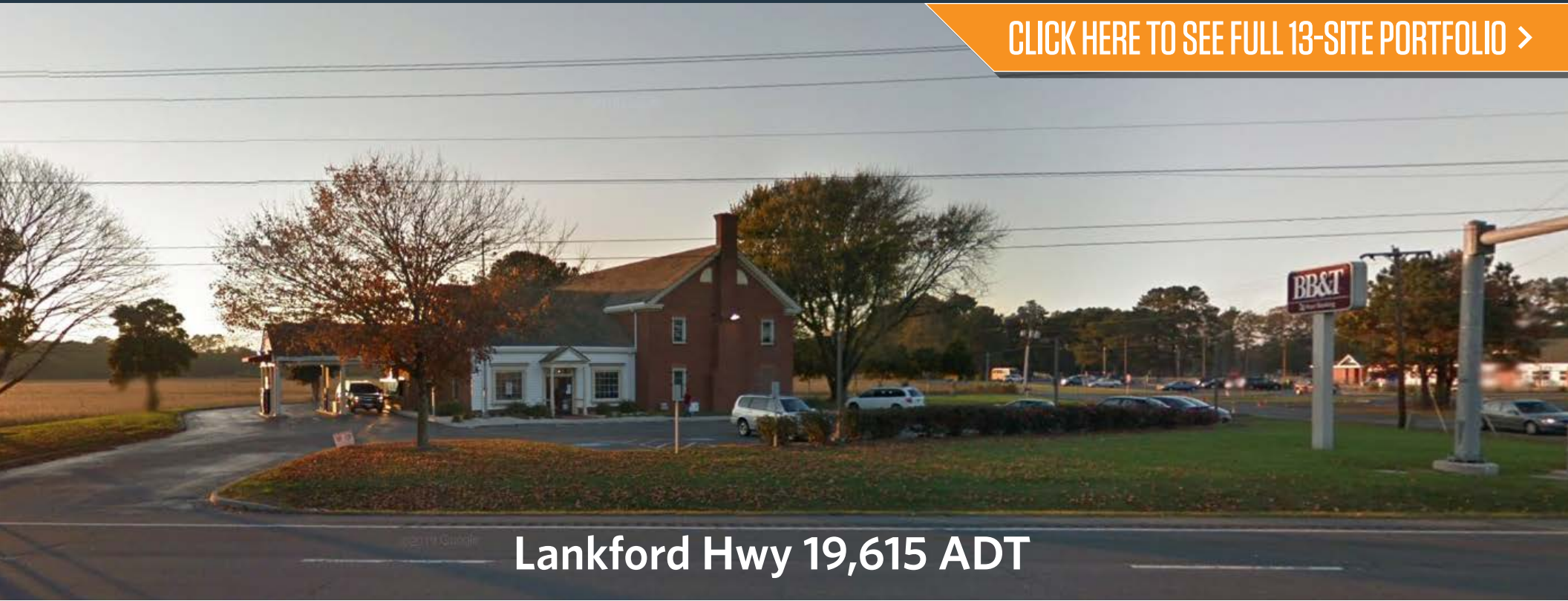


[CLICK HERE TO SEE FULL 13-SITE PORTFOLIO >](#)



## Lankford Hwy 19,615 ADT

### JOIN THESE RETAILERS



### FORMER BANK BRANCH AVAILABLE

- Building Size: 4,380 SF street level with drive thru  
2nd Floor: 2,364 SF
- Land Area: 1.37 acres at traffic signal
- Large free standing pylon sign
- Approximately 33 parking spaces
- Adjacent to Kegotank Elementary School (530 Students)
- Asking Price: \$495,000

**MATT SKALET**

maskalet@klnb.com | 202-420-7775

**BEN BECKER**

bbecker@klnb.com | 202-420-7773

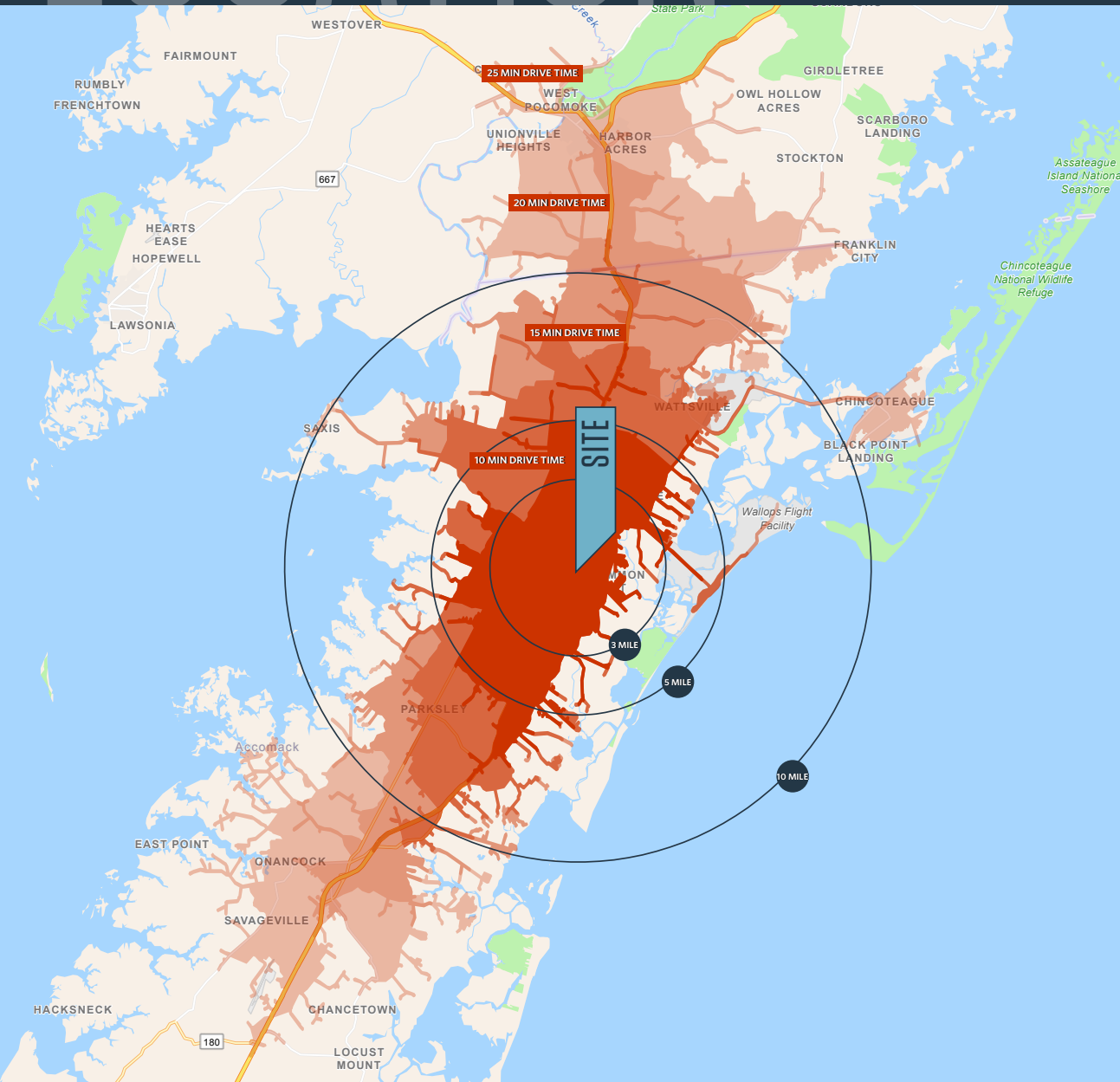
**RYAN SCHMITZ**

rschmitz@klnb.com | 202-602-1743

# LOCATION

# 13350 LANKFORD HWY

MAPPSVILLE, VA 23359, ACCOMACK COUNTY



## DEMOGRAPHICS | 2023:

### DRIVE TIME

	10-MIN	15-MIN	20-MIN	25-MIN
Population	4,530	10,800	15,240	27,351
Daytime Population	1,974	10,224	16,884	13,402
Households	1,757	4,250	6,120	11,519
Average HH Income	\$70,112	\$63,944	\$64,722	\$70,108

## TRAFFIC COUNTS | 2022:

Lankford Hwy	19,615 ADT
Groton Rd	650 ADT

**MATT SKALET**

maskalet@klnb.com | 202-420-7775

**BEN BECKER**

bbecker@klnb.com | 202-420-7773

**RYAN SCHMITZ**

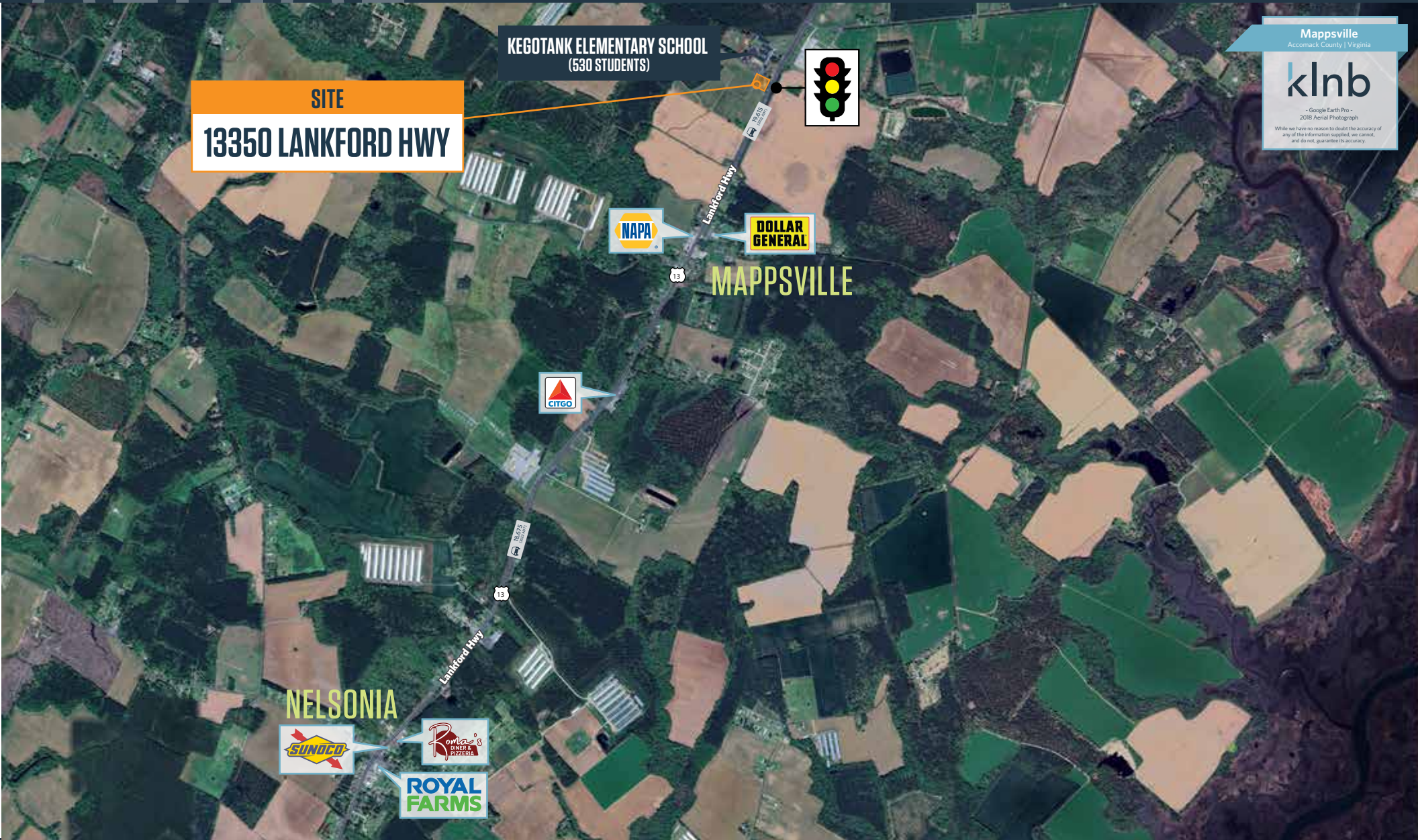
rschmitz@klnb.com | 202-602-1743



# AERIAL

# 13350 LANKFORD HWY

MAPPSVILLE, VA 23359, ACCOMACK COUNTY



**SITE**  
**13350 LANKFORD HWY**

**KEGOTANK ELEMENTARY SCHOOL**  
(530 STUDENTS)



**NELSONIA**



Mappsville  
Accomack County | Virginia

- Google Earth Pro -  
2018 Aerial Photograph

While we have no reason to doubt the accuracy of any of the information supplied, we cannot, and do not, guarantee its accuracy.

**MATT SKALET**

maskalet@klnb.com | 202-420-7775

**BEN BECKER**

bbecker@klnb.com | 202-420-7773

**RYAN SCHMITZ**

rschmitz@klnb.com | 202-602-1743

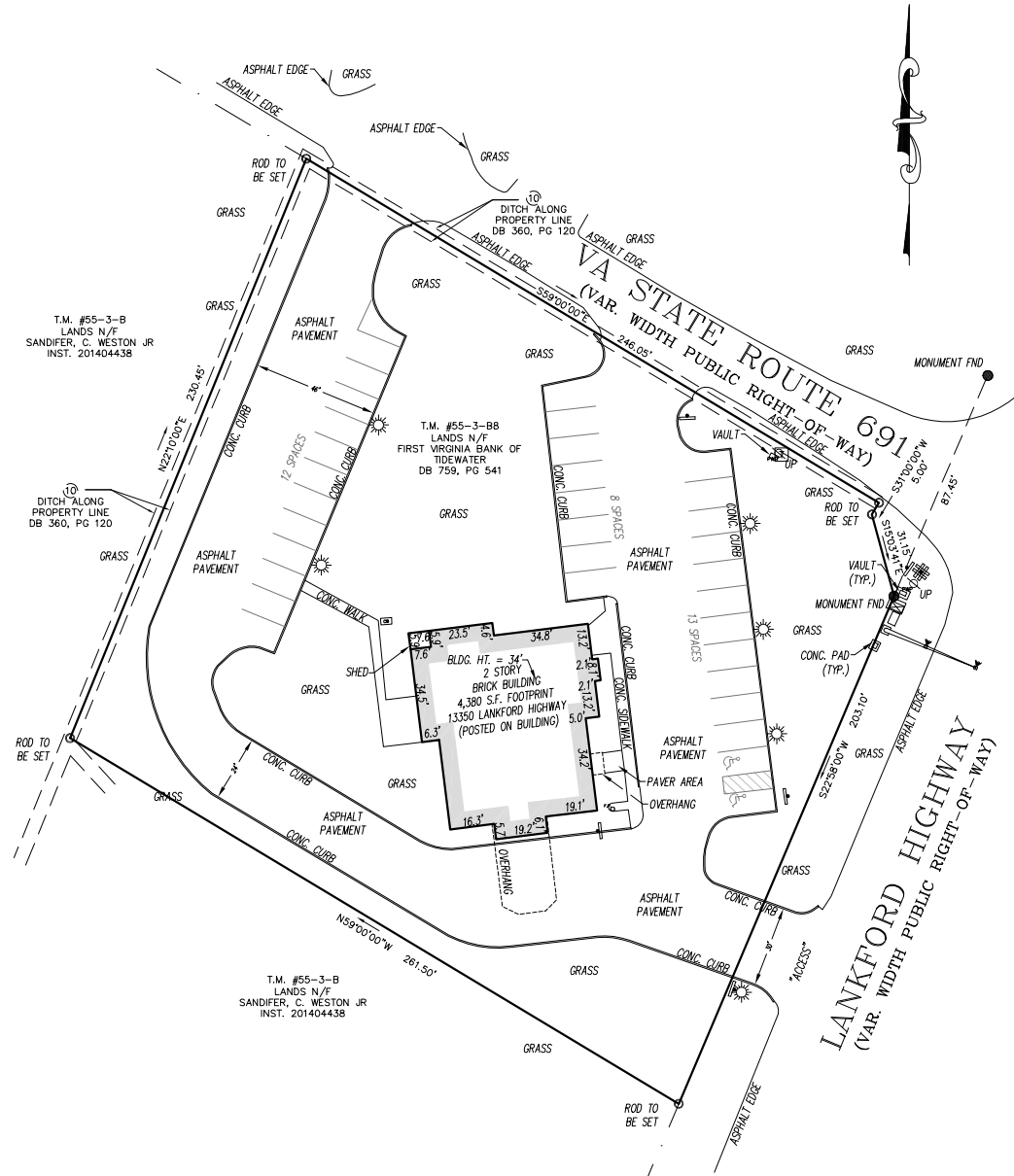


# SURVEY

# 13350 LANKFORD HWY

MAPPSVILLE, VA 23359, ACCOMACK COUNTY

[CLICK HERE TO DOWNLOAD SURVEY](#)



**MATT SKALET**

maskalet@klnb.com | 202-420-7775

**BEN BECKER**

bbecker@klnb.com | 202-420-7773

**RYAN SCHMITZ**

rschmitz@klnb.com | 202-602-1743





# 13350 LANKFORD HWY

MAPPSVILLE, VA 23359, ACCOMACK COUNTY

## FOR MORE INFORMATION, PLEASE CONTACT:

### MATT SKALET

[mskalet@klnb.com](mailto:maskalet@klnb.com)  
202-420-7775

### BEN BECKER

[bbecker@klnb.com](mailto:bbecker@klnb.com)  
202-420-7773

### RYAN SCHMITZ

[rschmitz@klnb.com](mailto:rschmitz@klnb.com)  
202-602-1743

1130 Connecticut Ave, NW, Suite 600, Washington, DC 20036

.....

## klnb.com



[instagram.com/klnbcre](https://www.instagram.com/klnbcre)



[linkedin.com/company/klnb](https://www.linkedin.com/company/klnb)



[facebook.com/KLNBCRE](https://www.facebook.com/KLNBCRE)

[CLICK TO VIEW PROPERTY WEBSITE](#)

While we have no reason to doubt the accuracy of any of the information supplied, we cannot, and do not, guarantee its accuracy. All information should be independently verified prior to a purchase or lease of the property. We are not responsible for errors, omissions, misuse, or misinterpretation of information contained herein and make no warranty of any kind, express or implied, with respect to the property or any other matters.