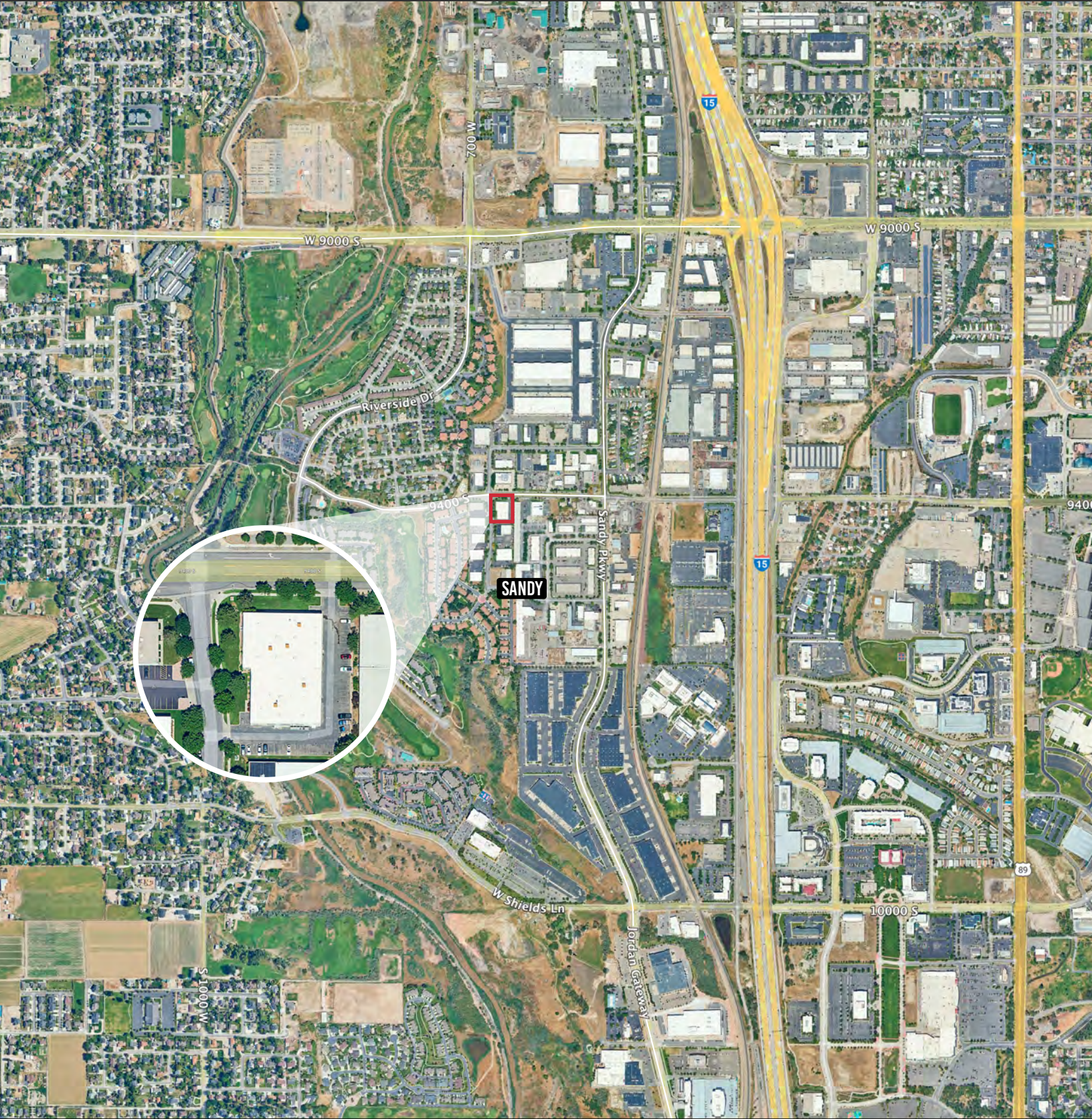


# Sandy Industrial

649 West 9400 South  
Sandy, UT 84070



## INDUSTRIAL | FOR SALE

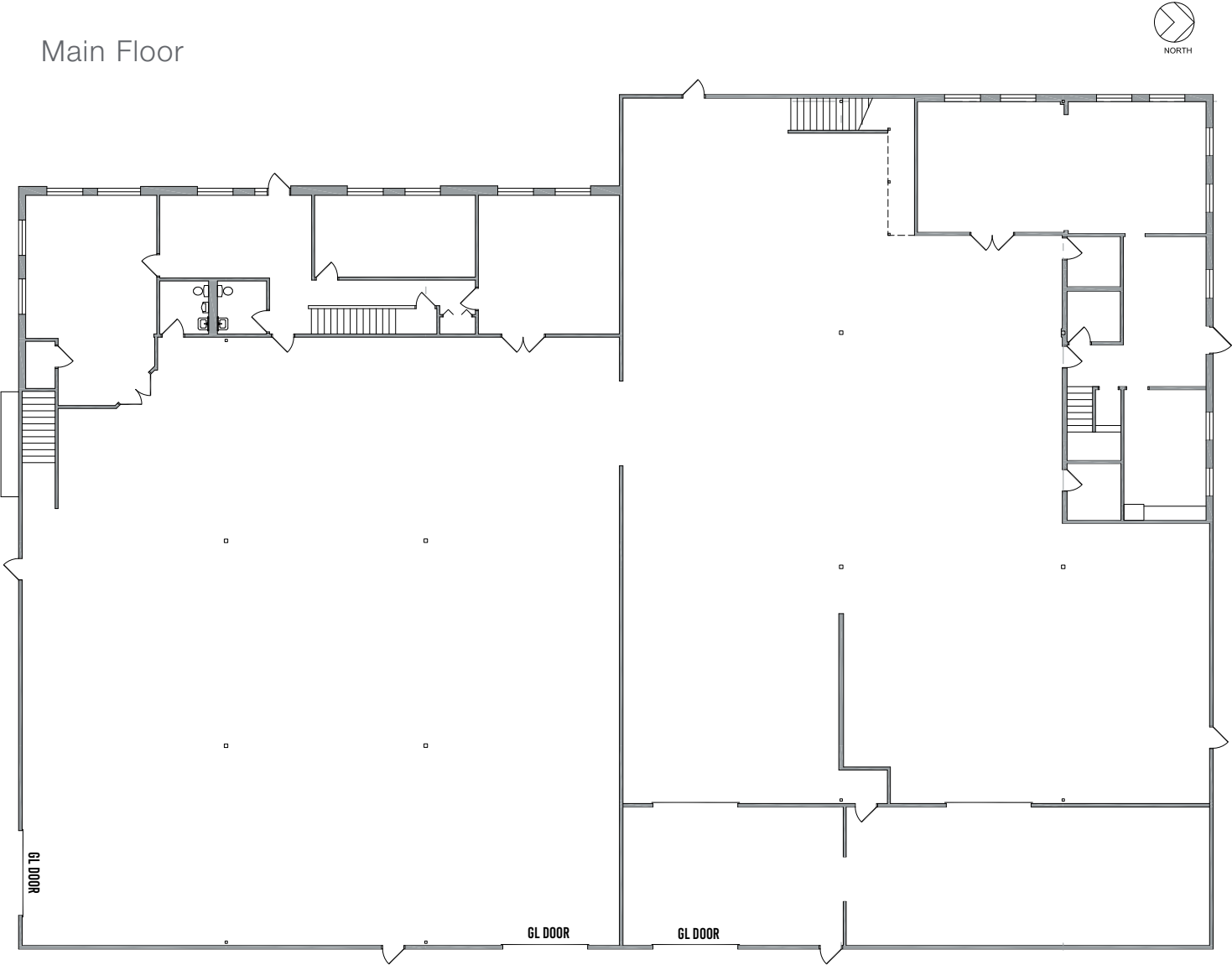
### PROPERTY INFORMATION

- > 23,255 Total SF
  - Main Floor Offices - 3,027 SF
  - Second Floor Offices - 3,517 SF
- > Sales price: \$4,999,825.00
- > 3 Grade Level Doors
- > 480 V and 208 V available. 800 Amps 3 Phase
- > 37 Parking Stalls + 2 Handicap Stalls
- > Easy Access to I-15
- > Fire Sprinklers





Main Floor



Second Floor

