

162,490 SF

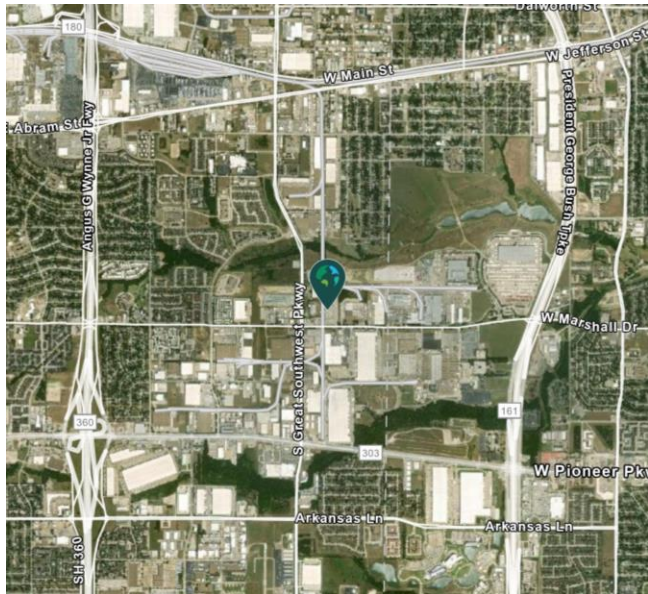
Industrial Space For Lease



Prologis Great Southwest



2400 W. Marshall Drive
Grand Prairie, TX 75050 USA



LOCATION

- In the highly desirable Great Southwest industrial submarket with easy access to SH 360, I-20 & I-30

FACILITY

- 162,490 sf available
- Build-to-suit office
- 36' clear height
- 40 (9' x 10') overhead dock doors
- 2 (12' x 14') overhead dock doors with ramp
- ESFR sprinkler system

ADVANTAGES AND AMENITIES

- 105 auto spaces & 61 trailer spaces
- 179' 6" truck court
- Access to the [Prologis Essentials](#) platform, which includes:
 - [Operations Essentials](#)
 - [Energy Essentials](#)
 - [Workforce Essentials](#)
 - [Transportation Essentials](#)
 - [Digital Essentials](#)

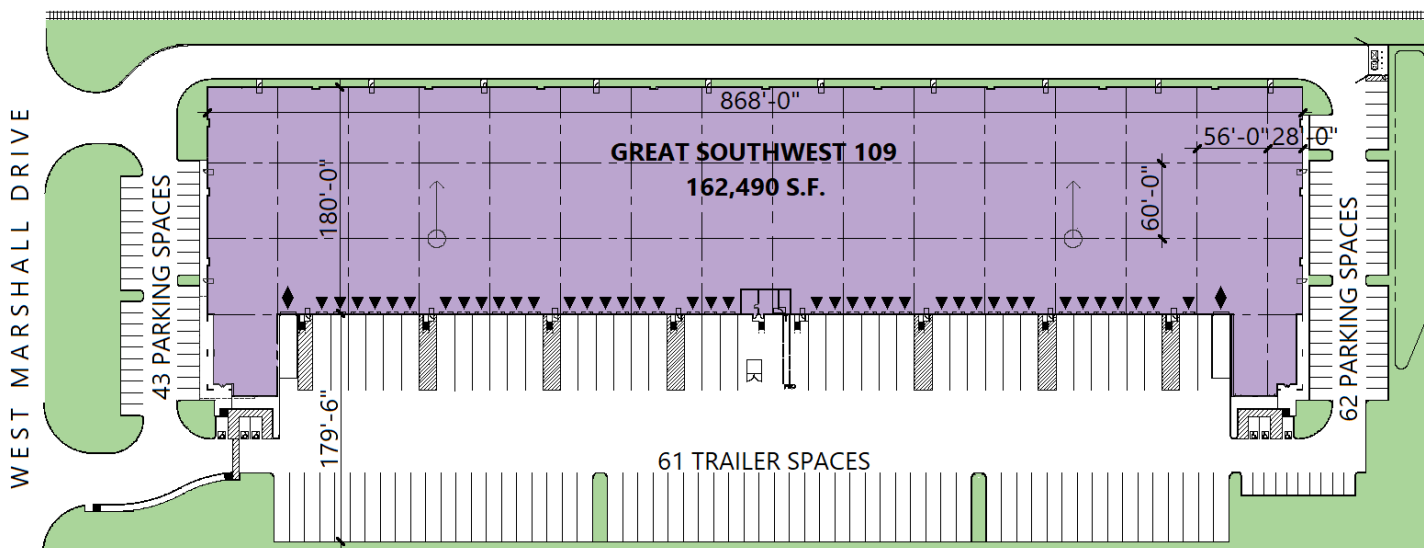
Prologis Essentials: your single-source service for efficient move-in and operations at prologisessentials.com

162,490 SF

Industrial Space For Lease



Prologis Great Southwest



Cushman & Wakefield

David Eseke
david.eseke@cushwake.com
ph +1 972 663 9852
cell +1 805 637 9966
2021 McKinney Avenue
Suite 900
Dallas, TX 75201 USA

Cushman & Wakefield

Clay Balch
clay.balch@cushwake.com
ph +1 972 663 9853
cell +1 972 742 9234
2021 McKinney Avenue
Suite 900
Dallas, TX 75201 USA

Prologis

Ryan McNaughton
rmcnaughton@prologis.com
ph +1 972 884 9218
cell +1 214 673 9489
2021 McKinney Avenue
Suite 1050
Dallas, TX 75201 USA

Prologis Essentials: your single-source service for efficient move-in and operations at prologisessentials.com

No warranty or representation, expressed or implied, is made as to the accuracy of the information contained herein, and same is submitted subject to error and omissions.