

Publix #0655 - Publix at Doral Isle

10755 NW 58th Street
 Doral, FL 33178
 Lat 25.827, Long -80.371

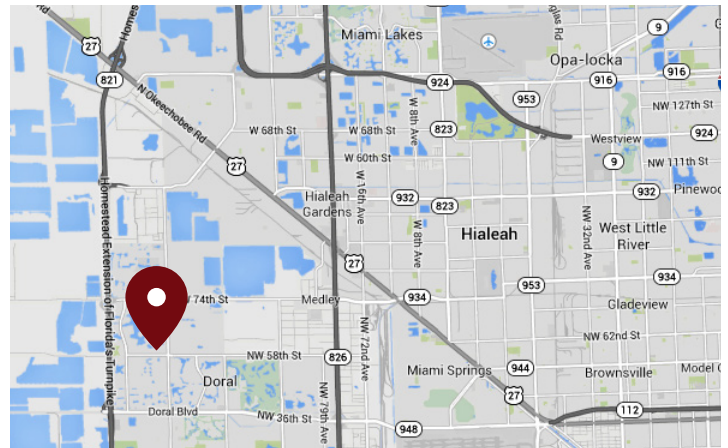
FOR LEASE



1,125 - 2,975 SF AVAILABLE

PROPERTY HIGHLIGHTS

- Located in Rapidly Growing City of Doral
- Ample Parking for Visitors
- Strong Tenant Mix with National, Regional and Local Names
- Publix-Anchored Center
- Combined Traffic Count: 47,570 VPD



DEMOGRAPHICS	1 Mile	3 Miles	5 Miles
Total Population	29,627	79,111	314,650
Daytime Population	23,242	144,919	420,069
Total Households	9,360	26,060	106,639
Avg. HH Income	\$117,036	\$115,945	\$82,017

Data provided by Placer Labs Inc. (www.placer.ai) & Esri

Adriana Mangual-Collazo

786.676.1650 | acollazo@crossmanco.com

980 North Federal Highway, Suite 434, Boca Raton, FL

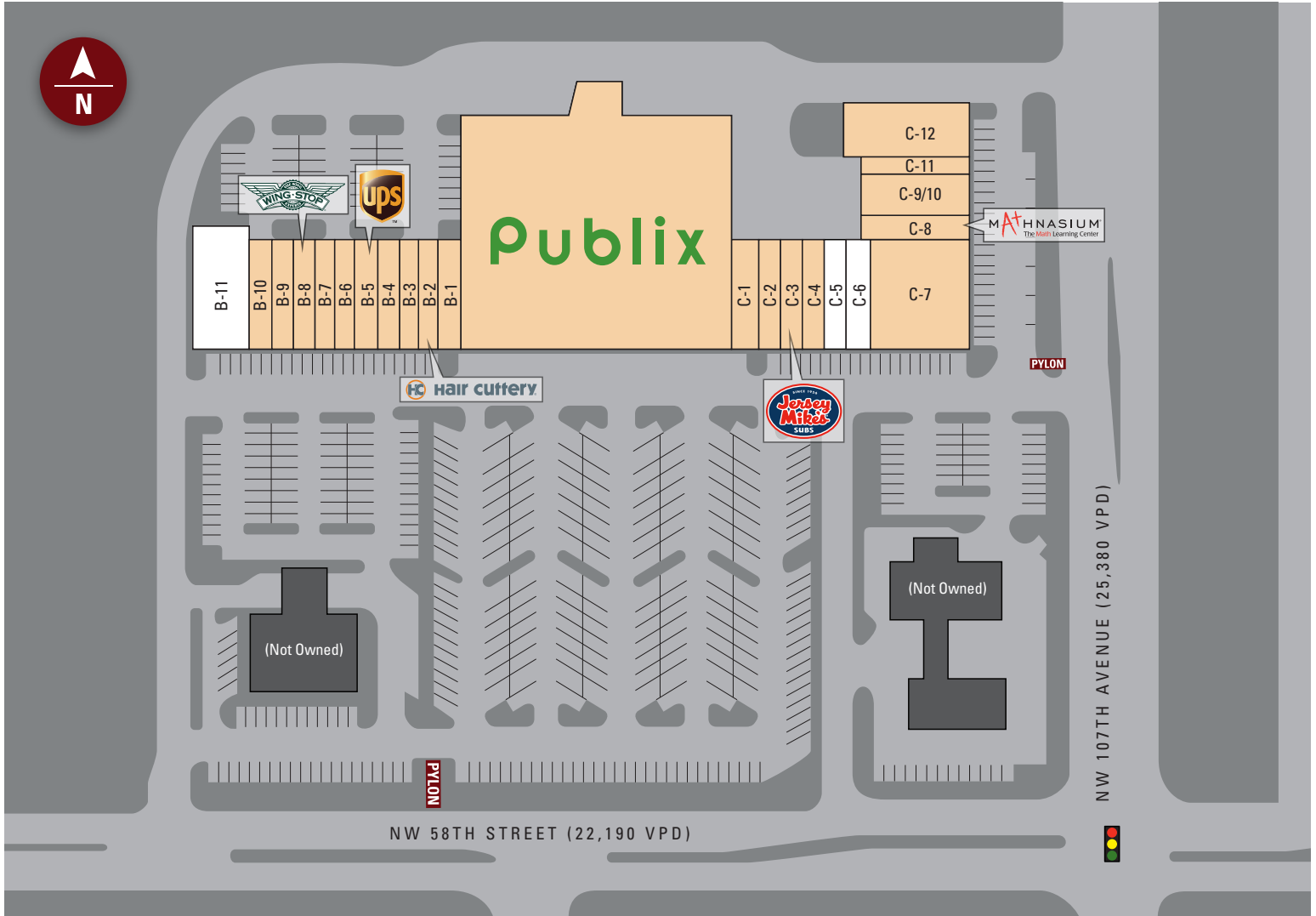
Licensed Real Estate Broker. No warranty expressed or implied has been made to the accuracy of the information provided herein, no liability assumed for error or omission.



www.crossmanco.com

Publix #0655 - Publix at Doral Isle

10755 NW 58th Street
 Doral, FL 33178
 Lat 25.827, Long -80.371



Suite	Tenant	Size
ANC	Publix	37,887
B-1	Nails	1,500
B-2	Hair Cuttery	1,125
B-3	DDS	1,125
B-4	Latina Restaurant	1,500
B-5	The UPS Store	1,500
B-6	Estrella Insurance	1,125
B-7	Liquor	1,125
B-8	Wingstop	1,500

Suite	Tenant	Size
B-9	Donato Dry Cleaners	1,125
B-10	La Fortuna Pizza	1,500
B-11	AVAILABLE	2,975
C-1	Cucayo	1,500
C-2	Chinese Takeout	1,125
C-3	Jersey Mike's	1,125
C-4	Snow Kool	1,125
C-5	AVAILABLE	1,125
C-6	AVAILABLE	1,875

Suite	Tenant	Size
C-7	HCA Medical	5,250
C-8	Mathnasium	1,500
C-9/10	Karate	2,250
C-11	Pediatric Dentist	1,500
C-12	Daycare	2,975
TOTAL		75,337

Adriana Mangual-Collazo

786.676.1650 | acollazo@crossmanco.com

980 North Federal Highway, Suite 434, Boca Raton, FL

Licensed Real Estate Broker. No warranty expressed or implied has been made to the accuracy of the information provided herein, no liability assumed for error or omission.



www.crossmanco.com

Publix #0655 - Publix at Doral Isle

10755 NW 58th Street
Doral, FL 33178
Lat 25.827, Long -80.371

FOOT TRAFFIC OVERVIEW

EST. # OF CUSTOMERS ANNUALLY



EST. # OF VISITS ANNUALLY



AVG. VISITS / CUSTOMER



AVG. LENGTH-OF-STAY / VISIT



TOP 3 DAYS



Saturday	212,934
Friday	207,741
Sunday	191,137

OF VISITS

TOP 3 HOURS

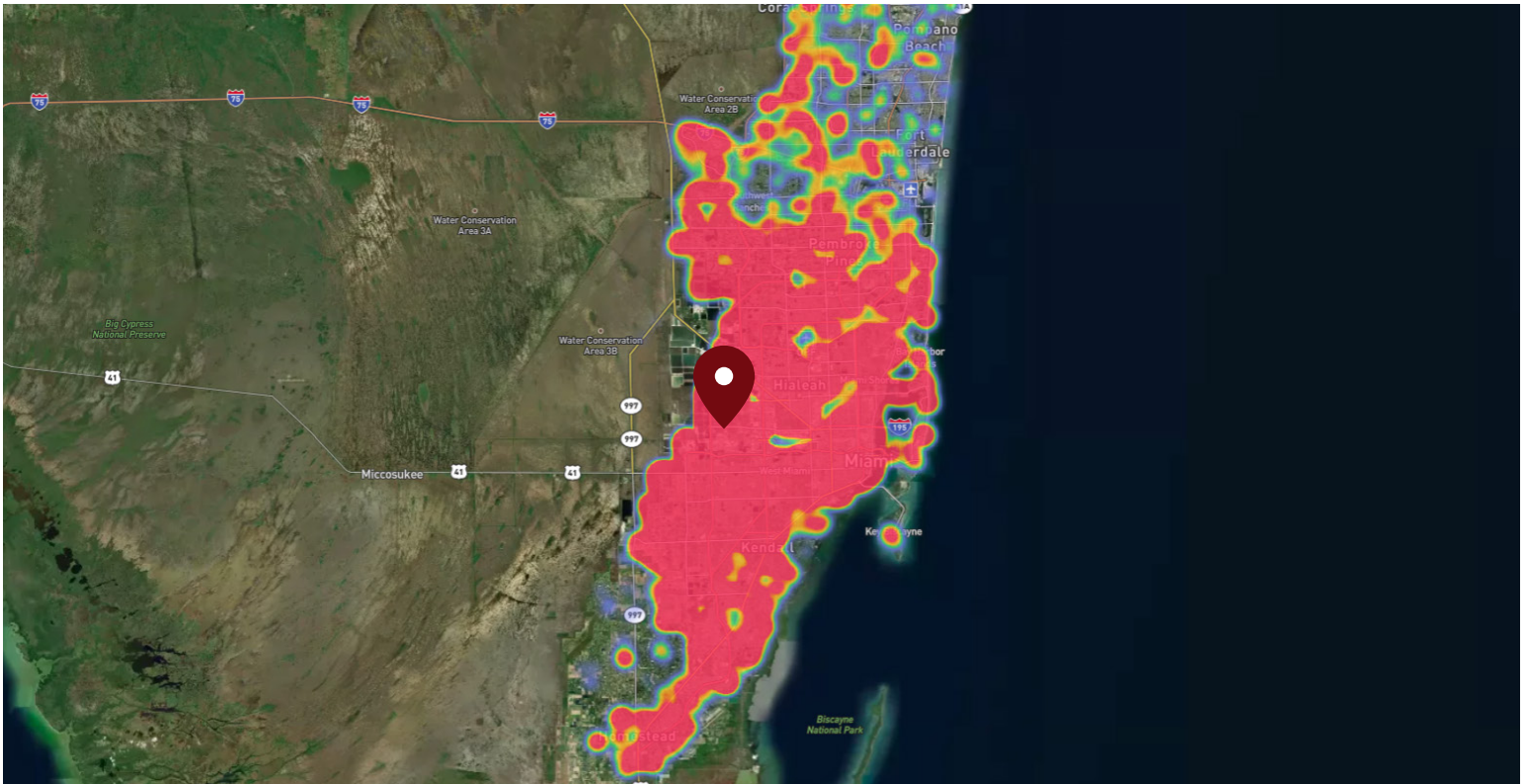


6-7 PM	185,316
7-8 PM	183,498
8-9 PM	172,434

OF VISITS

Data provided by Placer Labs Inc. (www.placer.ai) March 1, 2022 - February 28, 2023

SITE VISIT DENSITY



Red, orange, and yellow colors represent the location of 60% of site visitors

Data provided by Placer Labs Inc. (www.placer.ai)

Adriana Mangual-Collazo

786.676.1650 | acollazo@crossmanco.com

980 North Federal Highway, Suite 434, Boca Raton, FL

Licensed Real Estate Broker. No warranty expressed or implied has been made to the accuracy of the information provided herein, no liability assumed for error or omission.



www.crossmanco.com