



±1.4 & ±1.47 AC COMMERCE, GA

230 Steven B. Tanger Blvd., Commerce, GA 30529

Property Summary



DAILY TRAFFIC CONDITIONS

| TRAFFIC COUNT | DAILY TRAFFIC |
|---------------|---------------|
| COUNT | 52,853 |
| STREET | I-85 |

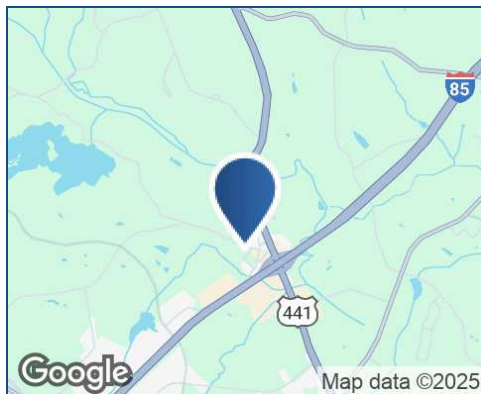
* Figures shown represent estimates

DEMOGRAPHICS - 2025

| DEMOGRAPHICS | 3 MILE | 5 MILE | 10 MILE |
|----------------------|----------|----------|----------|
| Estimated Population | 6,293 | 15,983 | 39,982 |
| Average HH Income | \$80,195 | \$78,850 | \$87,701 |
| Estimated Households | 2,247 | 5,976 | 14,781 |

PROPERTY HIGHLIGHTS

- Two outlots available: ±1.4 AC and ±1.47 AC
- Ideal for restaurant, self-storage, or hotel development
- Located at the entrance of The Home Depot
- Steven B. Tanger Blvd. and Ridgeway Rd., Commerce GA
- Nearby Retailers/Restaurants include: The Home Depot, Tanger Outlets, Hawg Wild BBQ and Catfish House, La Hacienda, Applebee's, Cracker Barrel, IHOP, Sonic, Krystal, & Chick-fil-A



KEITH VALENTINE

678.718.1882

KValentine@retail-pa.com

Retail Property Advisors // 678.718.1880 // 2100 RiverEdge Pkwy. // Suite 1050, Atlanta, GA 30328 // Retail-PA.com

ATLANTA // TAMPA // PASADENA, CA // AUBURN // SARASOTA // BALTIMORE

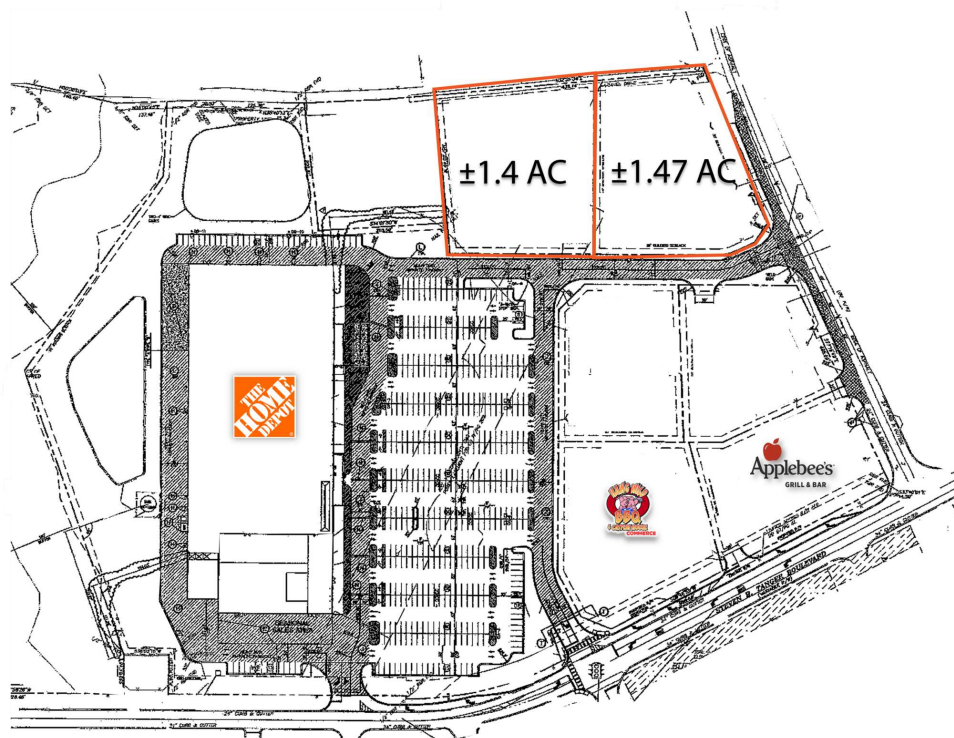
No warranty or representation, expressed or implied, is made as to the accuracy of the information contained herein, and same is submitted subject to errors, omissions, change of price, rental or other conditions, withdrawal without notice, any special list conditions imposed by our Principals.



±1.4 & ±1.47 AC COMMERCE, GA

230 Steven B. Tanger Blvd., Commerce, GA 30529

Location Maps



KEITH VALENTINE

678.718.1882

KValentine@retail-pa.com

Retail Property Advisors // 678.718.1880 // 2100 RiverEdge Pkwy. // Suite 1050, Atlanta, GA 30328 // Retail-PA.com

ATLANTA // TAMPA // PASADENA, CA // AUBURN // SARASOTA // BALTIMORE

No warranty or representation, expressed or implied, is made as to the accuracy of the information contained herein, and same is submitted subject to errors, omissions, change of price, rental or other conditions, withdrawal without notice, any special list conditions imposed by our Principals.