

CREATIVE SPACE SUBLEASE

2001 Wilshire Blvd
Santa Monica



SUITE 330

- Size – 4,405 RSF
- Rate – \$2.95 FSG
- Term – Thru 8/31/23
- Available – Immediately
- Solid Sublessor
- [Virtual Tour Video](#)

LAYOUT

- Reception Area
- Large Open Area
- Four (4) Private Offices
- Kitchen/Lounge
- Large Conference Room
- Small Conference Room
- Storage & IT Rooms

FEATURES

- Exposed Ceilings
- Polished Concrete Floors
- Fully Furnished Plug-n-Play
- Double Door Entry
- Bright Corner Suite

Ben L. Gary

213.221.7764

bengary@sevenlygroup.com

Lic. 01814633



SEVENLY GROUP

© 2020 Sevenly Group, Inc. This information has been obtained from sources believed reliable. We have not verified it and make no guarantee, warranty or representation about it. You and your advisors should conduct a careful, independent investigation of the property to determine to your satisfaction the suitability of the property for your needs. Photos herein are the property of their respective owners and use of these images without the express written consent of the owner is prohibited. Sevenly Group and the Sevenly Group logo are service marks of Sevenly Group, Inc. All other marks displayed on this document are the property of their respective owners.

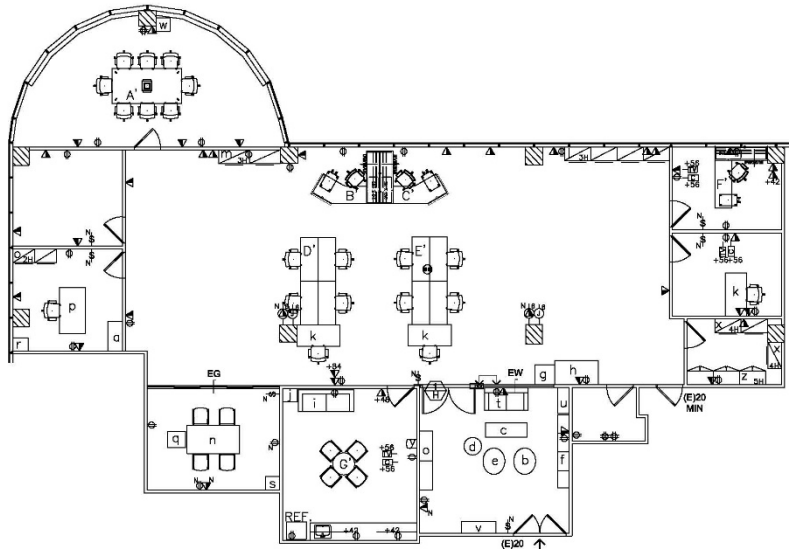
CREATIVE SPACE SUBLEASE

2001 Wilshire Blvd
Santa Monica

Interior Photos



Floor Plan



Ben L. Gary

213.221.7764

bengary@sevenlygroup.com

Lic. 01814633



SEVENLY GROUP

© 2020 Sevenly Group, Inc. This information has been obtained from sources believed reliable. We have not verified it and make no guarantee, warranty or representation about it. You and your advisors should conduct a careful, independent investigation of the property to determine to your satisfaction the suitability of the property for your needs. Photos herein are the property of their respective owners and use of these images without the express written consent of the owner is prohibited. Sevenly Group and the Sevenly Group logo are service marks of Sevenly Group, Inc. All other marks displayed on this document are the property of their respective owners.