



New Retail Development

1710-1720 Flemingsburg Road (KY 32)
Morehead, Kentucky 40351

Property Highlights

- Join Cattleman's Roadhouse, McDonald's, Huck's and Huey Magoo's Chicken Tenders
- Take 5 Carwash coming soon!
- High profile outlots available for ground lease
- Interstate height pylon signage permitted
- Ideal location for restaurants, banks, hotels, retail and service providers
- Located at the intersection of Flemingsburg Road (KY 32) and I-64 at Exit 137
- Excellent visibility and access to I-64 with access via signalized intersection
- Area retailers include Walmart, Kroger, Lowes, Burkes Outlet, Starbucks, Cracker Barrel and Hardees
- Morehead serves as a regional economic hub servicing over 100,000 in healthcare, education and retail; Morehead State University is 4.5 miles away with enrollment of 10,000+ students and 419 employees; St. Claire Regional Medical Center is the second largest employer in the region over 1,300 staff members and 159 beds

Offering Summary

Lease Rate:	Negotiable
Lot Sizes:	0.931 - 3.26 Acres

[View Property Video](#)

For More Information

Paul Ray Smith, Jr
Executive Vice President
O: 859 422 4401
prsmith@naiisaac.com | KY #183529

Jim Kemper
Vice President
O: 859 422 4407
jimkemper@naiisaac.com | KY #189559

Zach Smith
Senior Associate
O: 859 422 4406
zachsmith@naiisaac.com



Lease Information

Lease Type:	NNN Ground	Lease Term:	10-20 years
Total Space:	0.931 - 3.26 Acres	Lease Rate:	Call for Details

Available Lots

Lot	Size	Lease Type	Description
Lot 4	3.26 Acres	Ground Lease	Can be divided
Lot 5A	0.931 Acres	Ground Lease	-



Map data ©2024 Imagery ©2024 Airbus, Maxar Technologies

NO WARRANTY OR REPRESENTATION, EXPRESS OR IMPLIED, IS MADE AS TO THE ACCURACY OF THE INFORMATION CONTAINED HEREIN, AND THE SAME IS SUBMITTED SUBJECT TO ERRORS, OMISSIONS, CHANGE OF PRICE, RENTAL OR OTHER CONDITIONS, PRIOR SALE, LEASE OR FINANCING, OR WITHDRAWAL WITHOUT NOTICE, AND OF ANY SPECIAL LISTING CONDITIONS IMPOSED BY OUR PRINCIPALS NO WARRANTIES OR REPRESENTATIONS ARE MADE AS TO THE CONDITION OF THE PROPERTY OR ANY HAZARDS CONTAINED THEREIN ARE ANY TO BE IMPLIED.

771 Corporate Drive, Suite 500
Lexington, KY 40503
859 224 2000 tel
naiisaac.com





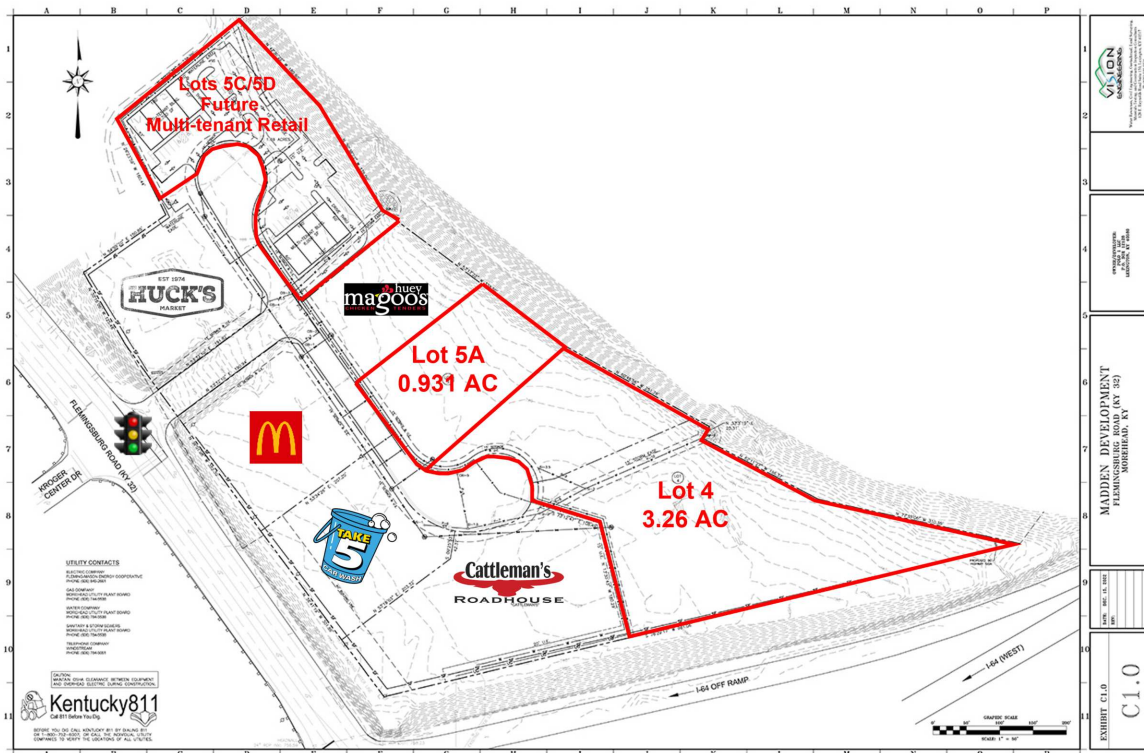
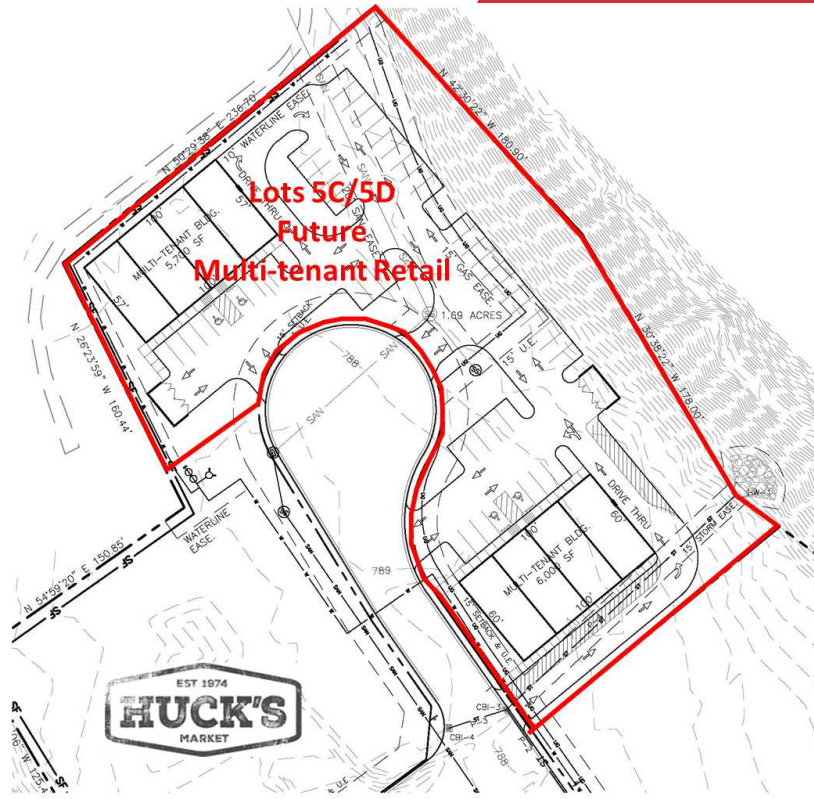
NO WARRANTY OR REPRESENTATION, EXPRESS OR IMPLIED, IS MADE AS TO THE ACCURACY OF THE INFORMATION CONTAINED HEREIN, AND THE SAME IS SUBMITTED SUBJECT TO ERRORS, OMISSIONS, CHANGE OF PRICE, RENTAL OR OTHER CONDITIONS, PRIOR SALE, LEASE OR FINANCING, OR WITHDRAWAL WITHOUT NOTICE, AND OF ANY SPECIAL LISTING CONDITIONS IMPOSED BY OUR PRINCIPALS NO WARRANTIES OR REPRESENTATIONS ARE MADE AS TO THE CONDITION OF THE PROPERTY OR ANY HAZARDS CONTAINED THEREIN ARE ANY TO BE IMPLIED.

771 Corporate Drive, Suite 500
Lexington, KY 40503
859 224 2000 tel
naiisaac.com



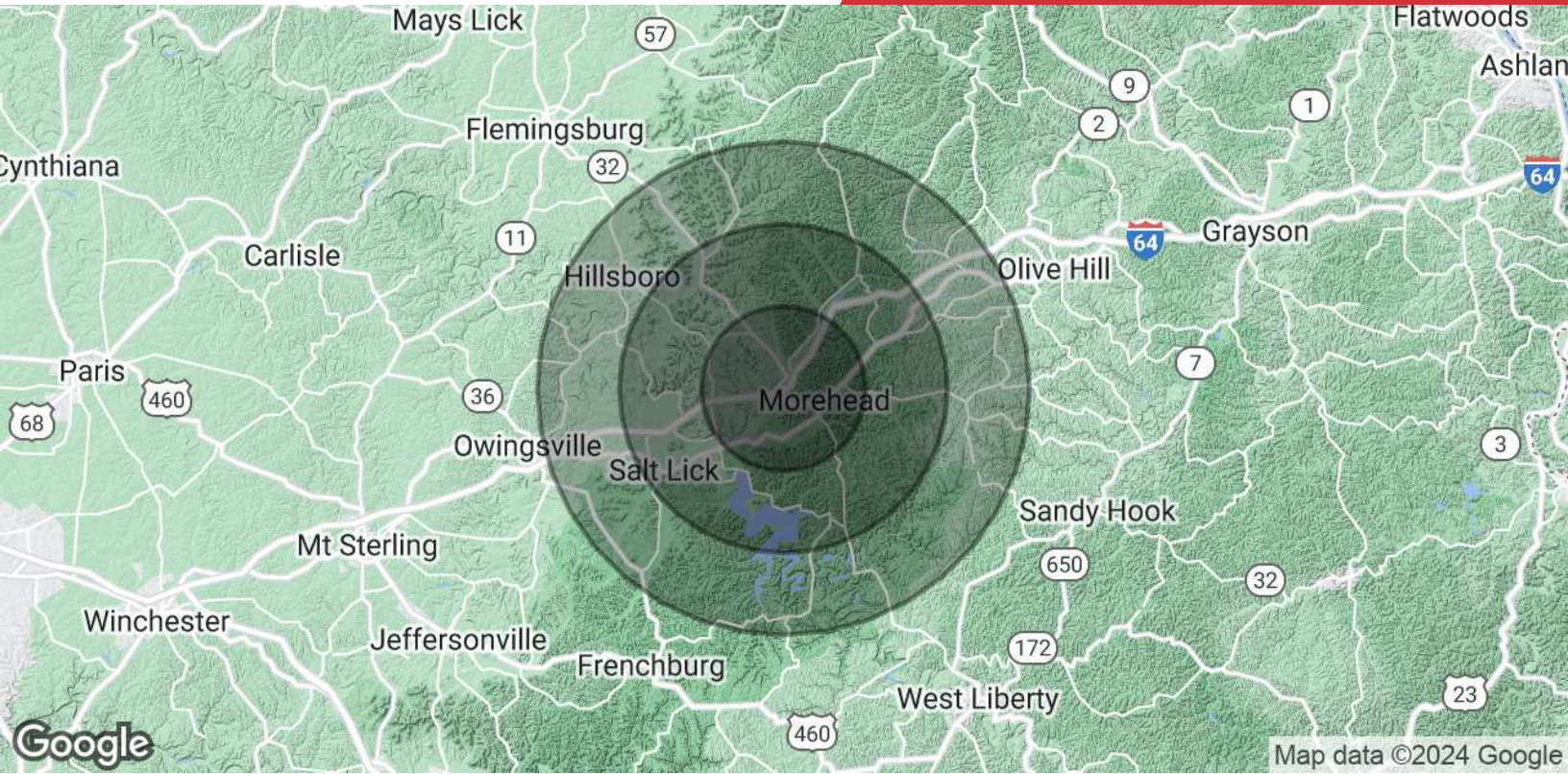
NO WARRANTY OR REPRESENTATION, EXPRESS OR IMPLIED, IS MADE AS TO THE ACCURACY OF THE INFORMATION CONTAINED HEREIN, AND THE SAME IS SUBMITTED SUBJECT TO ERRORS, OMISSIONS, CHANGE OF PRICE, RENTAL OR OTHER CONDITIONS, PRIOR SALE, LEASE OR FINANCING, OR WITHDRAWAL WITHOUT NOTICE, AND OF ANY SPECIAL LISTING CONDITIONS IMPOSED BY OUR PRINCIPALS NO WARRANTIES OR REPRESENTATIONS ARE MADE AS TO THE CONDITION OF THE PROPERTY OR ANY HAZARDS CONTAINED THEREIN ARE ANY TO BE IMPLIED.

771 Corporate Drive, Suite 500
Lexington, KY 40503
859 224 2000 tel
naiisaac.com



NO WARRANTY OR REPRESENTATION, EXPRESS OR IMPLIED, IS MADE AS TO THE ACCURACY OF THE INFORMATION CONTAINED HEREIN, AND THE SAME IS SUBMITTED SUBJECT TO ERRORS, OMISSIONS, CHANGE OF PRICE, RENTAL OR OTHER CONDITIONS, PRIOR SALE, LEASE OR FINANCING, OR WITHDRAWAL WITHOUT NOTICE, AND OF ANY SPECIAL LISTING CONDITIONS IMPOSED BY OUR PRINCIPALS NO WARRANTIES OR REPRESENTATIONS ARE MADE AS TO THE CONDITION OF THE PROPERTY OR ANY HAZARDS CONTAINED THEREIN ARE ANY TO BE IMPLIED.

771 Corporate Drive, Suite 500
Lexington, KY 40503
859 224 2000 tel
naiisaac.com



Population	5 Miles	10 Miles	15 Miles
Total Population	17,843	26,582	40,030
Average Age	26.0	27.2	29.8
Average Age (Male)	25.5	26.5	28.9
Average Age (Female)	26.5	28.0	30.9
Households & Income	5 Miles	10 Miles	15 Miles
Total Households	6,452	9,985	15,265
# of Persons per HH	3.0	2.9	2.8
Average HH Income	\$65,555	\$60,154	\$57,210
Average House Value			

* Demographic data derived from 2023 STDB