

RETAIL SPACES FOR LEASE

# FLINT'S CORNER U:7

150 WESTFORD ROAD,  
TYNGSBOROUGH, MA 01879



Albert Bouchie

Managing Director  
617.908.6775 | [albert.bouchie@gibsonsir.com](mailto:albert.bouchie@gibsonsir.com)

Henry McIntyre

978.764.2656 | [hmcintyre@advisorsliving.com](mailto:hmcintyre@advisorsliving.com)

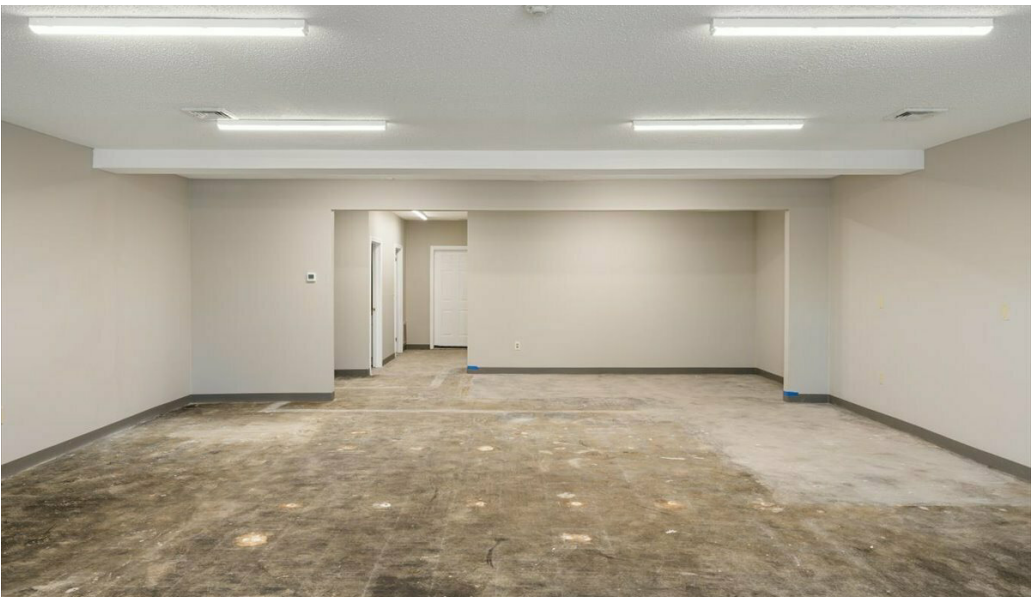
William Dragon

Agent  
978.735.3731 | [wdragon@advisors-commercial.com](mailto:wdragon@advisors-commercial.com)

**GIBSON**  
*Commercial*

# Flint's Corner Plaza

150 WESTFORD ROAD, TYNGSBOROUGH, MA 01879 | RETAIL PROPERTY FOR LEASE



## Property Description

Discover the retail lease opportunity at 150 Westford Road, Tyngsborough, MA. This property features modified gross leases with escalations over the base year, providing a favorable structure for businesses looking for flexibility and cost-control. With its prime location and well-maintained facilities, this property offers a professional and welcoming environment for tenants to thrive in. Take advantage of this opportunity to secure a lease in a sought-after location, where your business can flourish and grow. Whether you're establishing a new venture or expanding an existing one, this property provides the perfect space to achieve your commercial goals.

## Property Highlights

- NNN lease
- 3% Escalations over base year
- Professional and welcoming environment

## Offering Summary

Lease Rate:	\$2,600 per month NNN
Number of Units:	29
Units For Lease:	1 Retail
Available SF:	1,250 SF
Lot Size:	6.08 Acres
Building Size:	29,800 SF

**Albert Bouchie**

Managing Director  
617.908.6775 | albert.bouchie@gibsonsir.com

**Henry McIntyre**

978.764.2656 | hmcintyre@advisorsliving.com

**William Dragon**

Agent  
978.735.3731 | wdragon@advisors-commercial.com

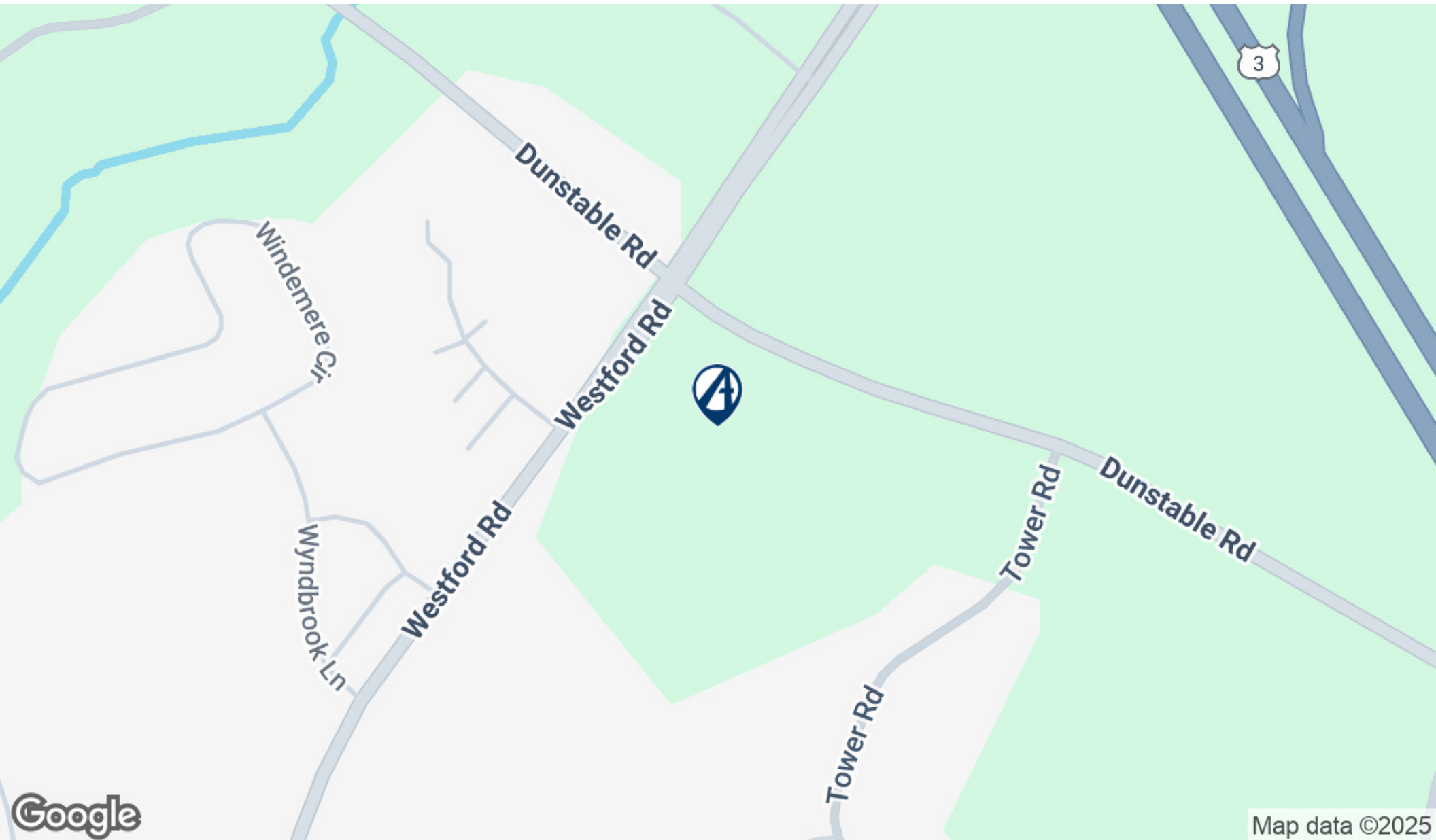
548 Tremont Street  
Boston, MA 02118  
617.908.6775  
gibsoncre.com



# Flint's Corner Plaza

150 WESTFORD ROAD, TYNGSBOROUGH, MA 01879 | RETAIL PROPERTY FOR LEASE

**GIBSON**  
*Commercial*



**Albert Bouchie**

Managing Director  
617.908.6775 | [albert.bouchie@gibsonsir.com](mailto:albert.bouchie@gibsonsir.com)

**Henry McIntyre**

978.764.2656 | [hmcintyre@advisorsliving.com](mailto:hmcintyre@advisorsliving.com)

**William Dragon**

Agent  
978.735.3731 | [wdragon@advisors-commercial.com](mailto:wdragon@advisors-commercial.com)

548 Tremont Street  
Boston, MA 02118  
617.908.6775  
[gibsoncre.com](http://gibsoncre.com)

# Flint's Corner Plaza

150 WESTFORD ROAD, TYNGSBOROUGH, MA 01879 | RETAIL PROPERTY FOR LEASE

Lease Rate	\$2,600 Per Month
------------	-------------------

## Location Information

Building Name	Flint's Corner Plaza
Street Address	150 Westford Road
City, State, Zip	Tyngsborough, MA 01879
County	Middlesex
Market	Lowell
Sub-market	Tyngsboro
Cross-Streets	Rt 3
Signal Intersection	Yes
Road Type	2-Track
Market Type	Medium
Nearest Highway	Route 3
Nearest Airport	Manchester-Logan

## Building Information

Building Size	29,800 SF
Occupancy %	81.0%
Tenancy	Multiple

## Property Information

Property Type	Retail
Property Subtype	Street Retail
Zoning	B3
Lot Size	6.08 Acres
Traffic Count	16000
Traffic Count Street	Westford
Amenities	Parking-access-location-separately metered utilities-town water and sewer
Power	Yes

## Parking & Transportation

Street Parking	Yes
Parking Type	Surface
Parking Ratio	4.0
Number of Parking Spaces	116

## Utilities & Amenities

Elevators	0
Number of Elevators	0
Number of Escalators	0

### Albert Bouchie

Managing Director  
617.908.6775 | albert.bouchie@gibsonsir.com

### Henry McIntyre

978.764.2656 | hmcintyre@advisorsliving.com

### William Dragon

Agent  
978.735.3731 | wdragon@advisors-commercial.com

548 Tremont Street  
Boston, MA 02118  
617.908.6775  
gibsoncre.com

# Space Photos

150 WESTFORD ROAD, TYNGSBOROUGH, MA 01879 | RETAIL PROPERTY FOR LEASE

**GIBSON**  
*Commercial*



**Albert Bouchie**

Managing Director

617.908.6775 | [albert.bouchie@gibsonsir.com](mailto:albert.bouchie@gibsonsir.com)

**Henry McIntyre**

978.764.2656 | [hmcintyre@advisorsliving.com](mailto:hmcintyre@advisorsliving.com)

**William Dragon**

Agent

978.735.3731 | [wdragon@advisors-commercial.com](mailto:wdragon@advisors-commercial.com)

548 Tremont Street

Boston, MA 02118

617.908.6775

[gibsoncre.com](http://gibsoncre.com)



# Flint's Corner Plaza

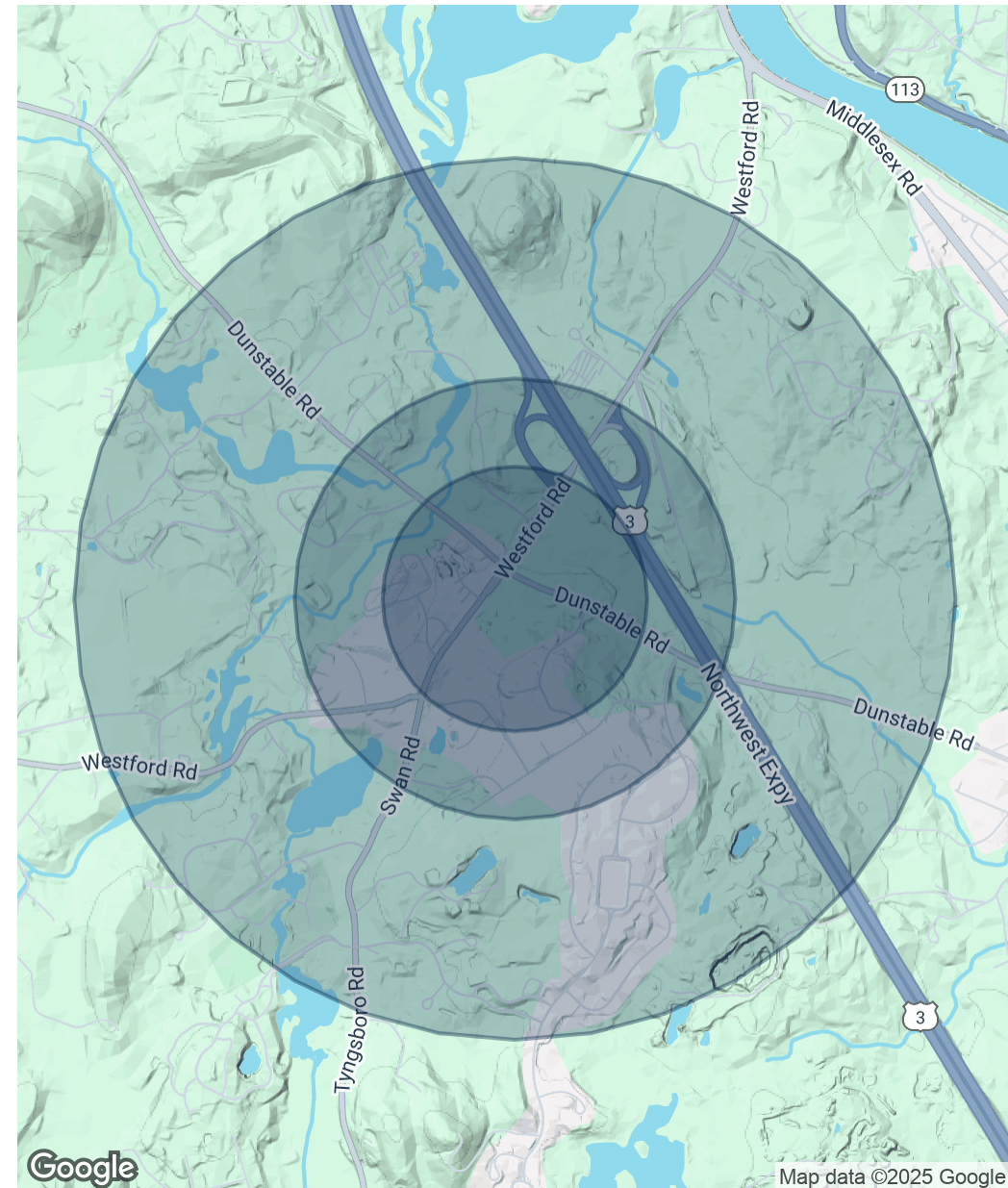
150 WESTFORD ROAD, TYNGSBOROUGH, MA 01879 | RETAIL PROPERTY FOR LEASE

**GIBSON**  
Commercial

Population	0.3 Miles	0.5 Miles	1 Mile
Total Population	260	660	2,514
Average Age	42	42	43
Average Age (Male)	42	42	42
Average Age (Female)	43	43	43

Households & Income	0.3 Miles	0.5 Miles	1 Mile
Total Households	86	221	889
# of Persons per HH	3	3	2.8
Average HH Income	\$196,554	\$199,388	\$194,231
Average House Value	\$635,653	\$646,244	\$649,234

*Demographics data derived from AlphaMap*



**Albert Bouchie**

Managing Director  
617.908.6775 | albert.bouchie@gibsonsir.com

**Henry McIntyre**

978.764.2656 | hmcintyre@advisorsliving.com

**William Dragon**

Agent  
978.735.3731 | wdragon@advisors-commercial.com

548 Tremont Street  
Boston, MA 02118  
617.908.6775  
**gibsoncre.com**