

# DEVELOPMENT OPPORTUNITY

4391 State Rd.  
Ridgeville, SC 29427

Purchase at \$5,500,000

## 182 ACRES Berkeley County



Robert L. Pratt, CCIM, SIOR

RE/MAX Southern Shores

(843) 576-2705: office

(843) 343-6085: cell

[Robert@RobertPratt.com](mailto:Robert@RobertPratt.com)

[www.RobertPratt.com](http://www.RobertPratt.com)

9209 University Blvd.

Charleston, SC 29406

(843) 767-7777: main

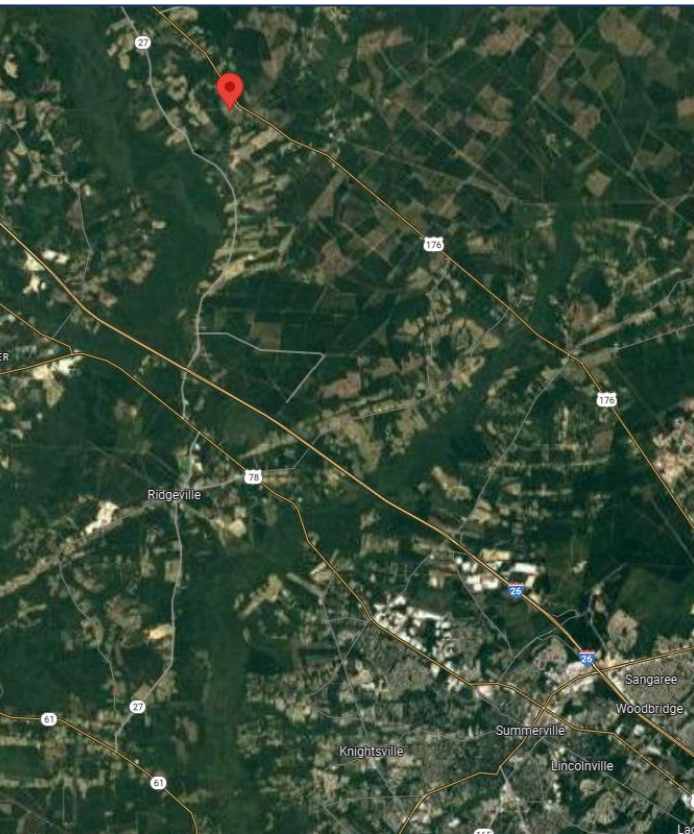
(843) 767-4006: fax

**RE/MAX**  
COMMERCIAL®

# DEVELOPMENT OPPORTUNITY

4391 State Rd.  
Ridgeville, SC 29427

Purchase at \$5,500,000



- Berkeley County TMS 116-00-00-027
- Zoned Flex-1 in Berkeley County
- Approximately 182 Acres
- Excellent Development Opportunity
- 11 Miles to Volvo Campus
- 10 Miles to Walmart Distribution Hub
- Rapidly Growing Location
- Endless Possibilities for Use

Approximately 182 Acres in Berkeley County with Flex-1 Zoning, ideal for residential development. There are farming and hunting leases in place for a portion of the tract. Leases run through December 2023 and July 2024 respectively. Property can be income producing through these leases and future timbering or can be redeveloped.

Robert L. Pratt, CCIM, SIOR

(843) 576-2705: office  
(843) 343-6085: cell  
[Robert@RobertPratt.com](mailto:Robert@RobertPratt.com)  
[www.RobertPratt.com](http://www.RobertPratt.com)

RE/MAX Southern Shores

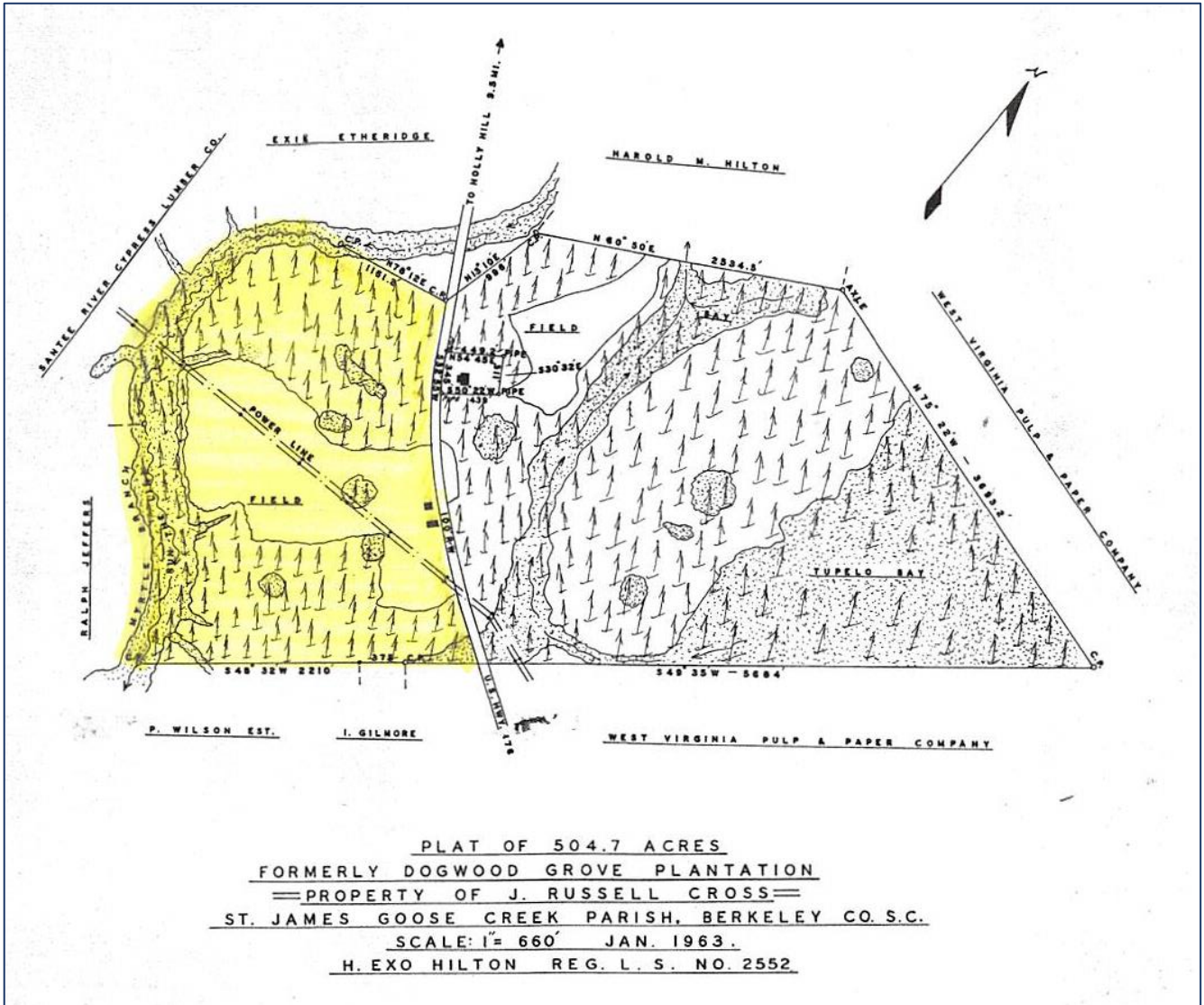
9209 University Blvd.  
Charleston, SC 29406  
(843) 767-7777: main  
(843) 767-4006: fax



# 182 ACRES – Berkeley County

4391 State Rd.  
Ridgeville, SC 29427

Purchase at \$5,500,000



Robert L. Pratt, CCIM, SIOR

RE/MAX Southern Shores

(843) 576-2705: office

(843) 343-6085: cell

[Robert@RobertPratt.com](mailto:Robert@RobertPratt.com)

[www.RobertPratt.com](http://www.RobertPratt.com)

9209 University Blvd.

Charleston, SC 29406

(843) 767-7777: main

(843) 767-4006: fax

**RE/MAX**  
COMMERCIAL<sup>®</sup>