



SAURAGE ROTENBERG
COMMERCIAL REAL ESTATE

FOR LEASE RETAIL CENTER ALONG PERKINS ROAD

**8150 Perkins Rd
Baton Rouge, LA 70810**

BRIAN NICOLICH
Commercial Sales & Leasing
(D)225.229.4371
brian@sr-cre.com



SAURAGE ROTENBERG
COMMERCIAL REAL ESTATE

7,580 SF RETAIL CENTER ALONG PERKINS ROAD

8150 PERKINS RD, BATON ROUGE, LA 70810

FOR LEASE

7,580 SF

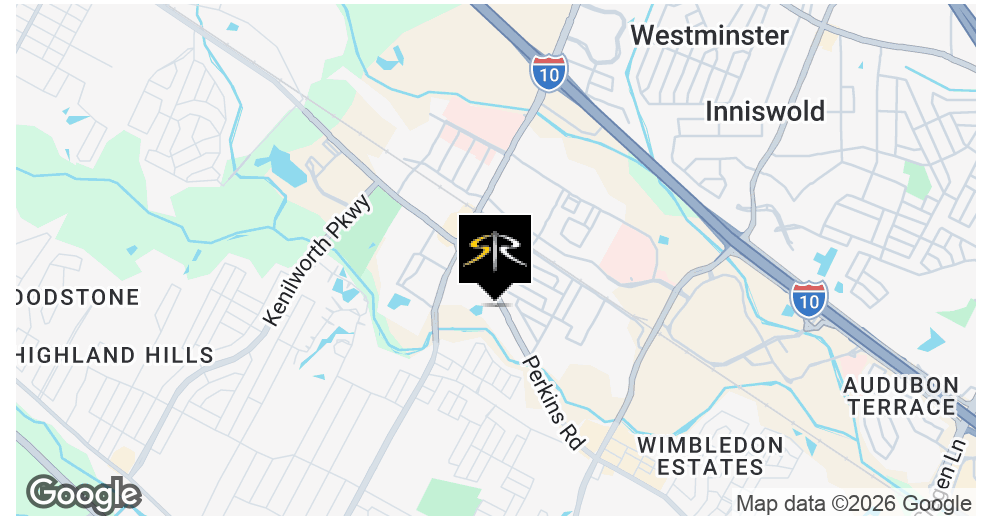


OFFERING SUMMARY

Lease Rate:	\$35 SF/yr (NNN)
Building Size:	7,580 SF
Available SF:	1,520 - 3,393 SF
Lot Size:	72,286 SF
Year Built:	2025
Zoning:	C1
Traffic Count:	21,826

PROPERTY OVERVIEW

This 7,580 SF Retail Center along the Perkins Road corridor will offer a variety of configurations for retail and restaurant use, including drive-thru.



BRIAN NICOLICH

Commercial Sales & Leasing
225.229.4371
brian@sr-cre.com

SAURAGE ROTENBERG COMMERCIAL REAL ESTATE, LLC

5135 Bluebonnet Boulevard
Baton Rouge, LA 70809
225.766.0000 | sauragerotenberg.com

7,580 SF RETAIL CENTER ALONG PERKINS ROAD

8150 PERKINS RD, BATON ROUGE, LA 70810

FOR LEASE

7,580 SF

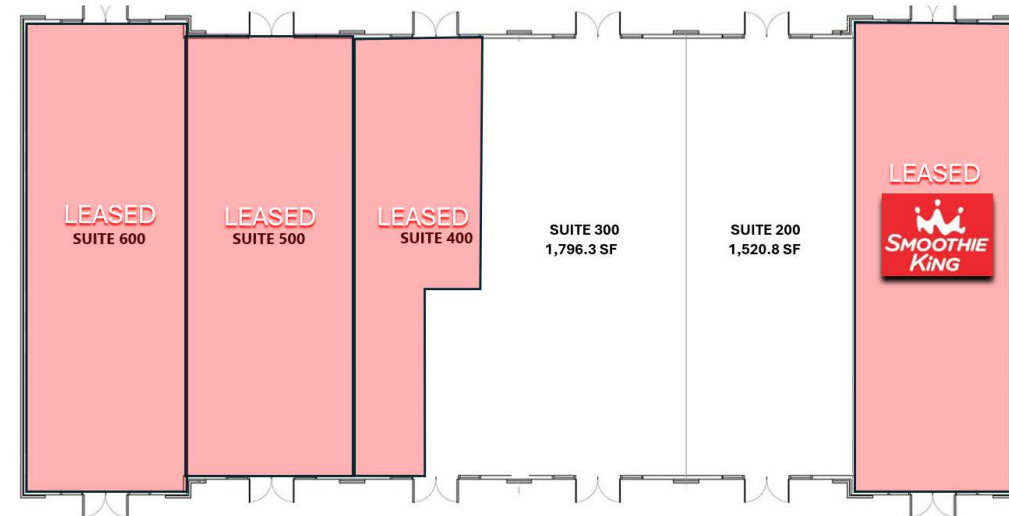


PROPERTY HIGHLIGHTS

This 7,580 SF Retail Center along the Perkins Road corridor will offer a variety of configurations for retail and restaurant use, including drive-thru.

Suite Offerings include:

- Two ±1,450 SF End Caps (one with Drive-thru)
- Two ±1,140 SF Suites
- Two ±1,200 SF Suites
- This Retail Center is situated just south of the Perkins Road / Essen Lane intersection, less than 5 minute drive times to the Mall of Louisiana, Perkins Rowe shopping center and the Village at Willow Grove
- Nearby tenants include Burger King, Iron Tribe Fitness, Pet Suites, Walgreens, Bowie Outfitters, Rotolo's, Domino's, Ichiban, and so many more
- Minutes from the Baton Rouge health district; Our Lady of the Lake Regional Medical Center and Children's Hospital, Baton Rouge General Medical Center, Ochsner Medical Complex, and numerous health care providers
- There is a Dedicated Left Turn Lane already in place on Perkins making for easy access for traffic in both directions.
- LL will finish Buildout to a Vanilla Box based on tenant's needs



BRIAN NICOLICH
Commercial Sales & Leasing
225.229.4371
brian@sr-cre.com

SAURAGE ROTENBERG COMMERCIAL REAL ESTATE, LLC
5135 Bluebonnet Boulevard
Baton Rouge, LA 70809
225.766.0000 | sauragerotenberg.com



SAURAGE ROTENBERG
COMMERCIAL REAL ESTATE

7,580 SF RETAIL CENTER ALONG PERKINS ROAD

8150 PERKINS RD, BATON ROUGE, LA 70810

FOR LEASE

7,580 SF



AVAILABLE SPACES

SUITE	TENANT	SIZE (SF)	LEASE TYPE	LEASE RATE	DESCRIPTION
Suite 100	Smoothie King	1,450 SF	NNN	\$35.00 SF/yr	LEASED
Suite 200	Available	1,520 SF	NNN	\$35.00 SF/yr	In-line
Suite 300	Available	1,796 SF	NNN	\$35.00 SF/yr	In-line
Suite 400	-	1,140 SF	NNN	\$35.00 SF/yr	LEASED
Suite 500	LEASED	1,200 SF	NNN	\$35.00 SF/yr	LEASED
Suite 600	LEASED	1,450 SF	NNN	\$35.00 SF/yr	LEASED

BRIAN NICOLICH
Commercial Sales & Leasing
225.229.4371
brian@sr-cre.com

SAURAGE ROTENBERG COMMERCIAL REAL ESTATE, LLC
5135 Bluebonnet Boulevard
Baton Rouge, LA 70809
225.766.0000 | sauragerotenberg.com

The information contained herein has either been given to us by property owners or is from sources deemed reliable and is believed to be correct, it is not in any way warranted or guaranteed by Saurage Rotenberg Commercial Real Estate. This information is submitted subject to errors, omissions, changes in price, rental or other conditions, withdrawal without notice, and to any special listing conditions imposed by the principals. Licensed in Louisiana & Mississippi.



SAURAGE ROTENBERG
COMMERCIAL REAL ESTATE

7,580 SF RETAIL CENTER ALONG PERKINS ROAD

8150 PERKINS RD, BATON ROUGE, LA 70810

RETAIL MAP 1

7,580 SF



Map data ©2025 Google Imagery ©2025 Airbus, Landsat / Copernicus, Maxar Technologies, USDA/FPAC/Geo

BRIAN NICOLICH
Commercial Sales & Leasing
225.229.4371
brian@sr-cre.com

SAURAGE ROTENBERG COMMERCIAL REAL ESTATE, LLC
5135 Bluebonnet Boulevard
Baton Rouge, LA 70809
225.766.0000 | sauragerotenberg.com

The information contained herein has either been given to us by property owners or is from sources deemed reliable and is believed to be correct, it is not in any way warranted or guaranteed by Saurage Rotenberg Commercial Real Estate. This information is submitted subject to errors, omissions, changes in price, rental or other conditions, withdrawal without notice, and to any special listing conditions imposed by the principals. Licensed in Louisiana & Mississippi.



SAURAGE ROTENBERG
COMMERCIAL REAL ESTATE

RETAIL MAP 2

7,580 SF RETAIL CENTER ALONG PERKINS ROAD

8150 PERKINS RD, BATON ROUGE, LA 70810

7,580 SF



BRIAN NICOLICH
Commercial Sales & Leasing
225.229.4371
brian@sr-cre.com

SAURAGE ROTENBERG COMMERCIAL REAL ESTATE, LLC
5135 Bluebonnet Boulevard
Baton Rouge, LA 70809
225.766.0000 | sauragerotenberg.com

The information contained herein has either been given to us by property owners or is from sources deemed reliable and is believed to be correct, it is not in any way warranted or guaranteed by Saurage Rotenberg Commercial Real Estate. This information is submitted subject to errors, omissions, changes in price, rental or other conditions, withdrawal without notice, and to any special listing conditions imposed by the principals. Licensed in Louisiana & Mississippi.



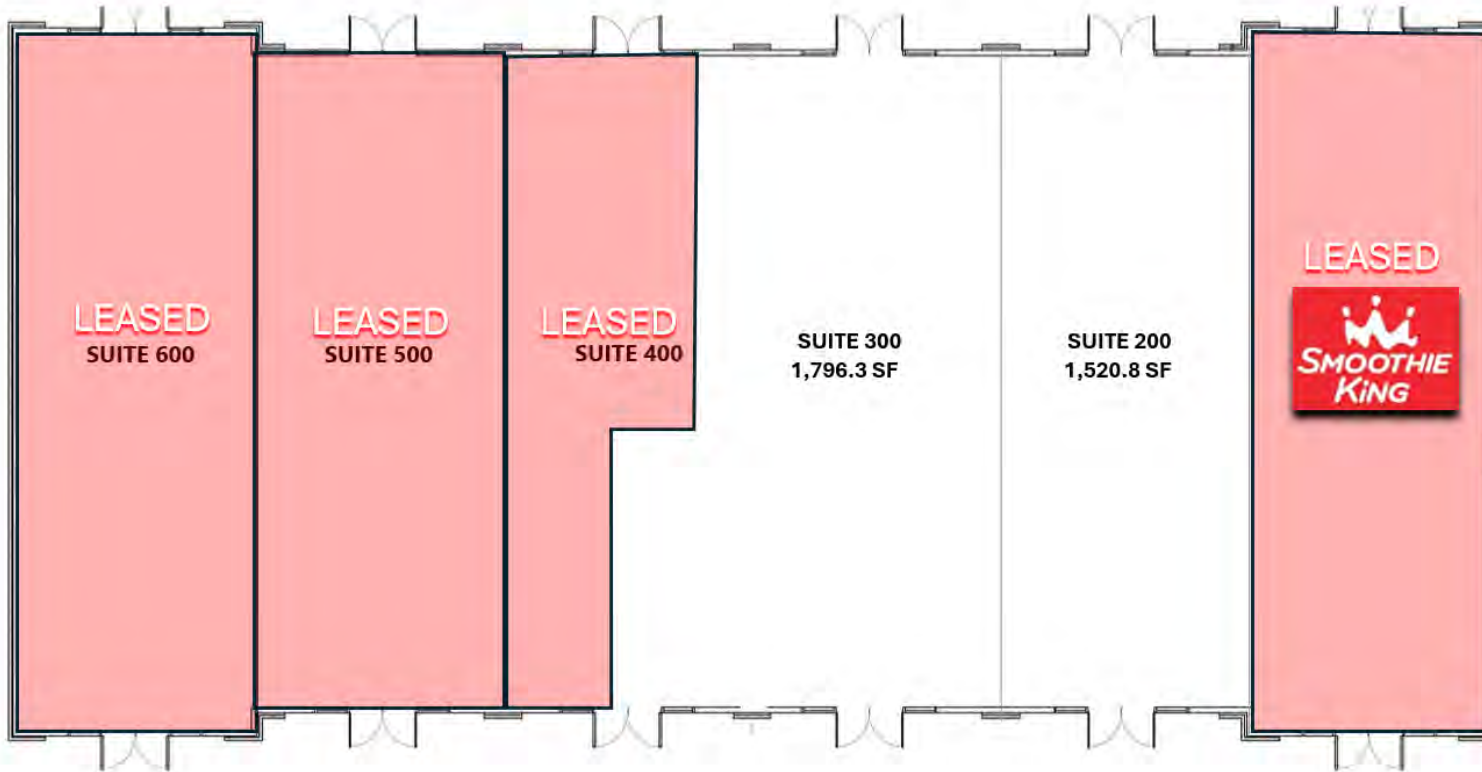
SAURAGE ROTENBERG
COMMERCIAL REAL ESTATE

7,580 SF RETAIL CENTER ALONG PERKINS ROAD

8150 PERKINS RD, BATON ROUGE, LA 70810

FLOOR PLAN

7,580 SF



BRIAN NICOLICH
Commercial Sales & Leasing
225.229.4371
brian@sr-cre.com

SAURAGE ROTENBERG COMMERCIAL REAL ESTATE, LLC
5135 Bluebonnet Boulevard
Baton Rouge, LA 70809
225.766.0000 | sauragerotenberg.com

The information contained herein has either been given to us by property owners or is from sources deemed reliable and is believed to be correct, it is not in any way warranted or guaranteed by Saurage Rotenberg Commercial Real Estate. This information is submitted subject to errors, omissions, changes in price, rental or other conditions, withdrawal without notice, and to any special listing conditions imposed by the principals. Licensed in Louisiana & Mississippi.



SAURAGE ROTENBERG
COMMERCIAL REAL ESTATE

7,580 SF RETAIL CENTER ALONG PERKINS ROAD

8150 PERKINS RD, BATON ROUGE, LA 70810

SITE PLAN

7,580 SF



BRIAN NICOLICH
Commercial Sales & Leasing
225.229.4371
brian@sr-cre.com

SAURAGE ROTENBERG COMMERCIAL REAL ESTATE, LLC
5135 Bluebonnet Boulevard
Baton Rouge, LA 70809
225.766.0000 | sauragerotenberg.com

The information contained herein has either been given to us by property owners or is from sources deemed reliable and is believed to be correct, it is not in any way warranted or guaranteed by Saurage Rotenberg Commercial Real Estate. This information is submitted subject to errors, omissions, changes in price, rental or other conditions, withdrawal without notice, and to any special listing conditions imposed by the principals. Licensed in Louisiana & Mississippi.

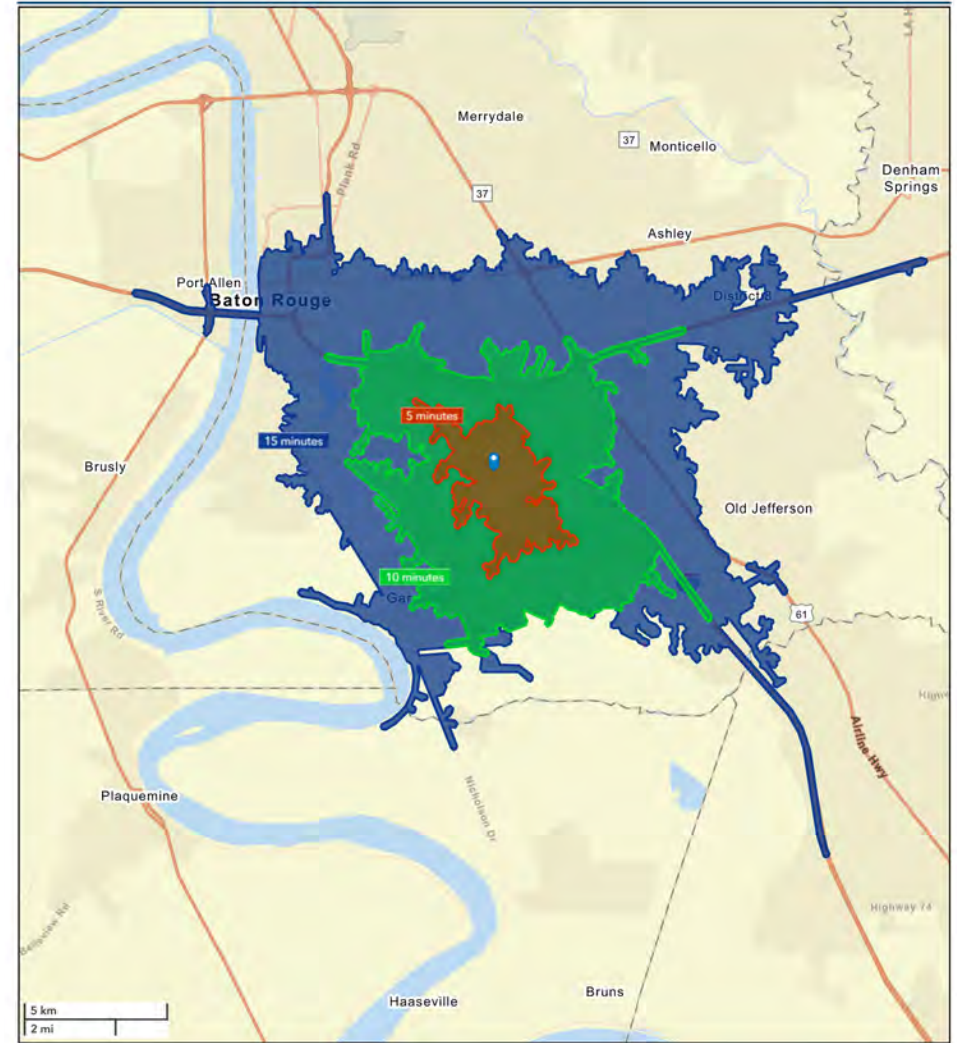
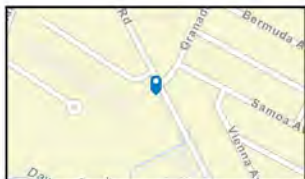
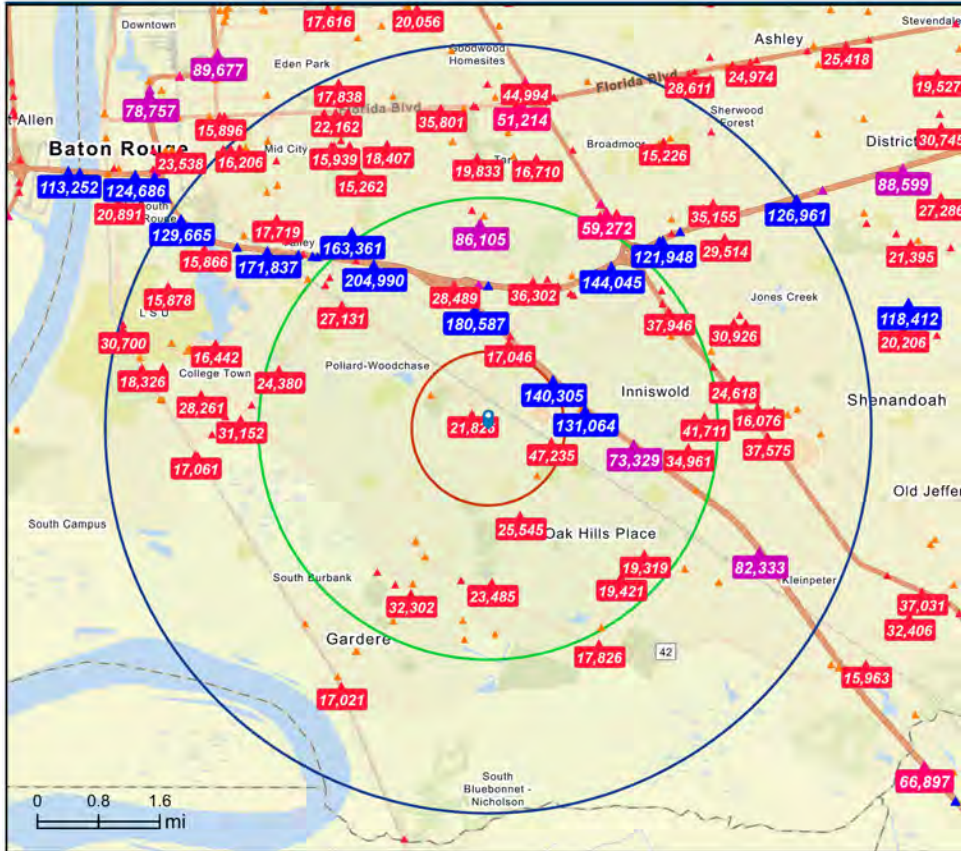


SAURAGE ROTENBERG
COMMERCIAL REAL ESTATE

TRAFFIC COUNT MAP (1, 3, 5 MILE RADII) & DRIVE TIME MAP: 5, 10, 15 MINUTES 7,580 SF RETAIL CENTER ALONG PERKINS ROAD

8150 PERKINS RD, BATON ROUGE, LA 70810

7,580 SF



BRIAN NICOLICH
Commercial Sales & Leasing
225.229.4371
brian@sr-cre.com

SAURAGE ROTENBERG COMMERCIAL REAL ESTATE, LLC
5135 Bluebonnet Boulevard
Baton Rouge, LA 70809
225.766.0000 | sauragerotenberg.com



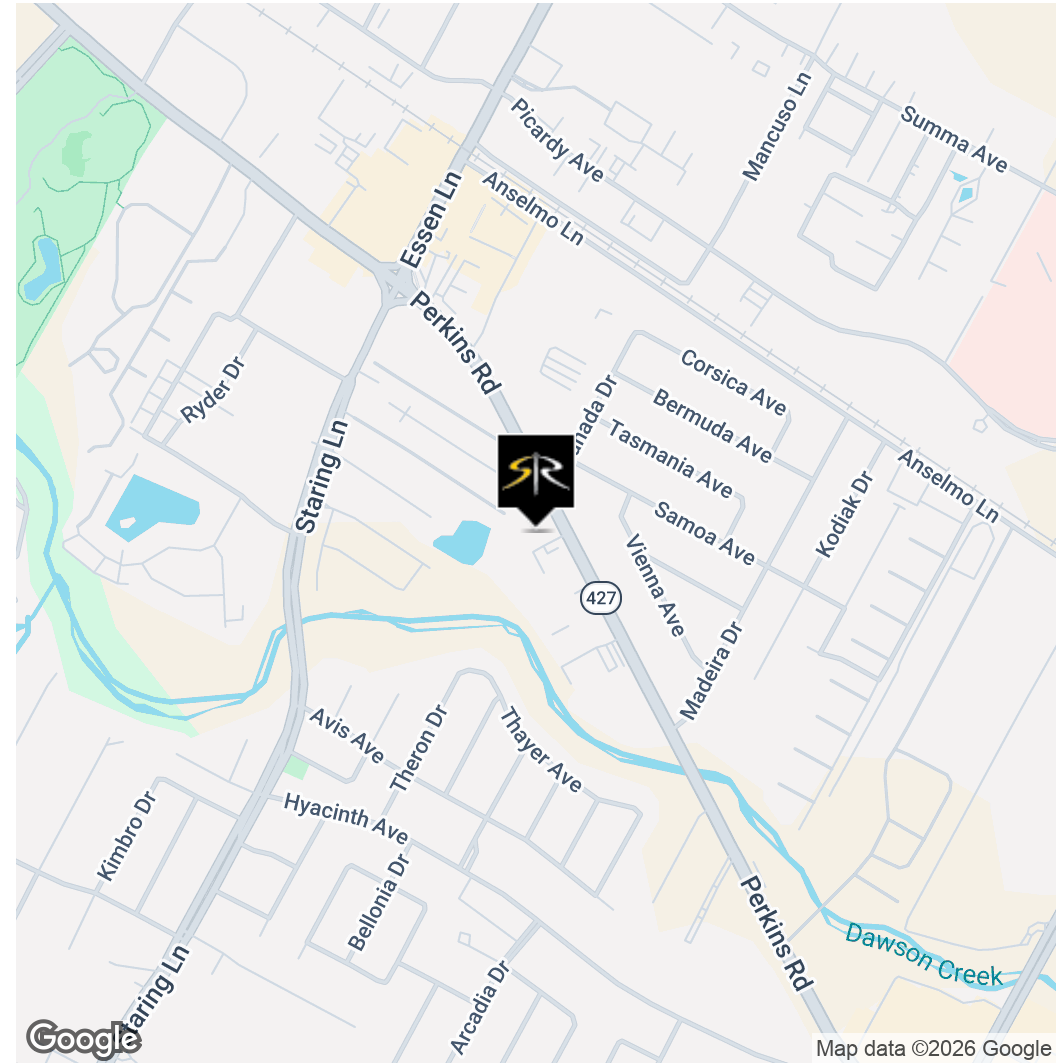
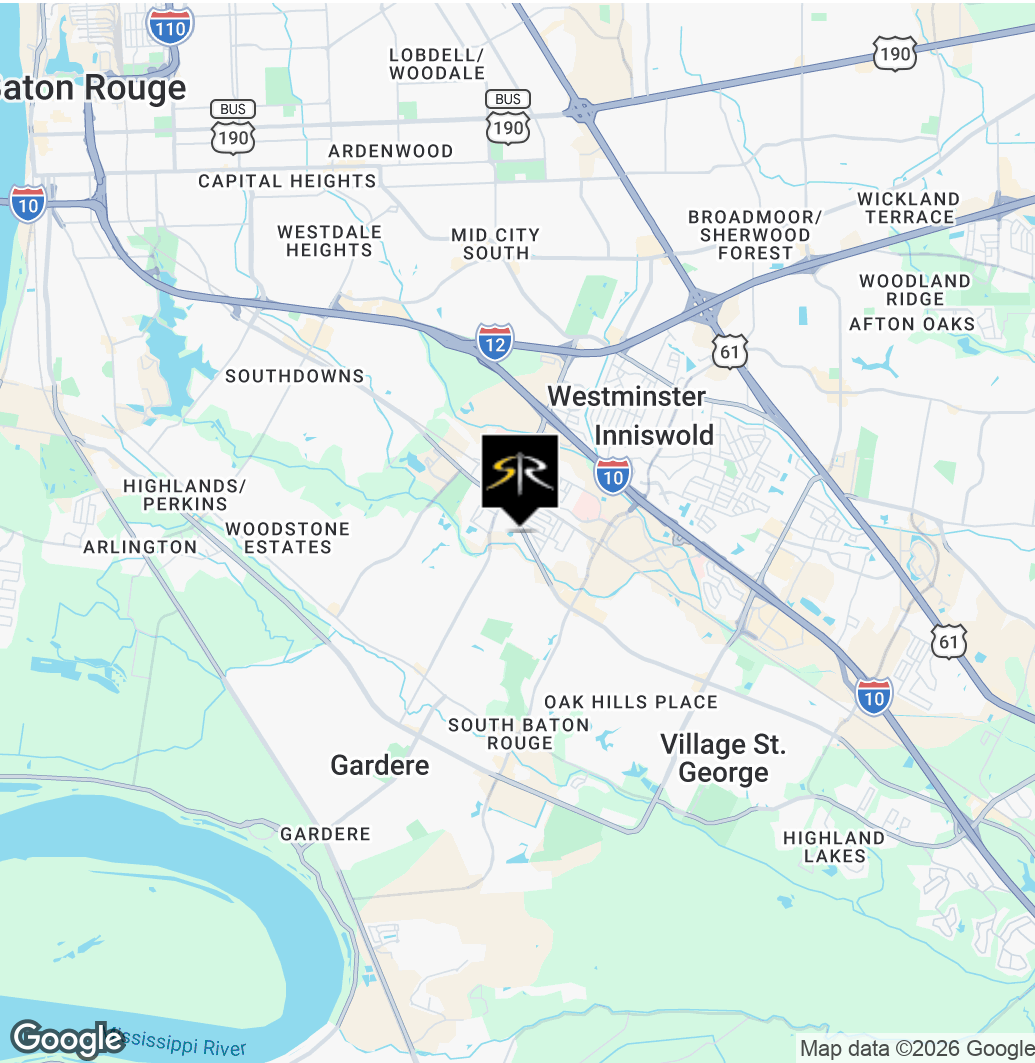
SAURAGE ROTENBERG
COMMERCIAL REAL ESTATE

LOCATION MAPS

7,580 SF RETAIL CENTER ALONG PERKINS ROAD

8150 PERKINS RD, BATON ROUGE, LA 70810

7,580 SF



BRIAN NICOLICH
Commercial Sales & Leasing
225.229.4371
brian@sr-cre.com

SAURAGE ROTENBERG COMMERCIAL REAL ESTATE, LLC
5135 Bluebonnet Boulevard
Baton Rouge, LA 70809
225.766.0000 | sauragerotenberg.com

The information contained herein has either been given to us by property owners or is from sources deemed reliable and is believed to be correct, it is not in any way warranted or guaranteed by Saurage Rotenberg Commercial Real Estate. This information is submitted subject to errors, omissions, changes in price, rental or other conditions, withdrawal without notice, and to any special listing conditions imposed by the principals. Licensed in Louisiana & Mississippi.



SAURAGE ROTENBERG
COMMERCIAL REAL ESTATE

DEMOGRAPHICS

7,580 SF RETAIL CENTER ALONG PERKINS ROAD

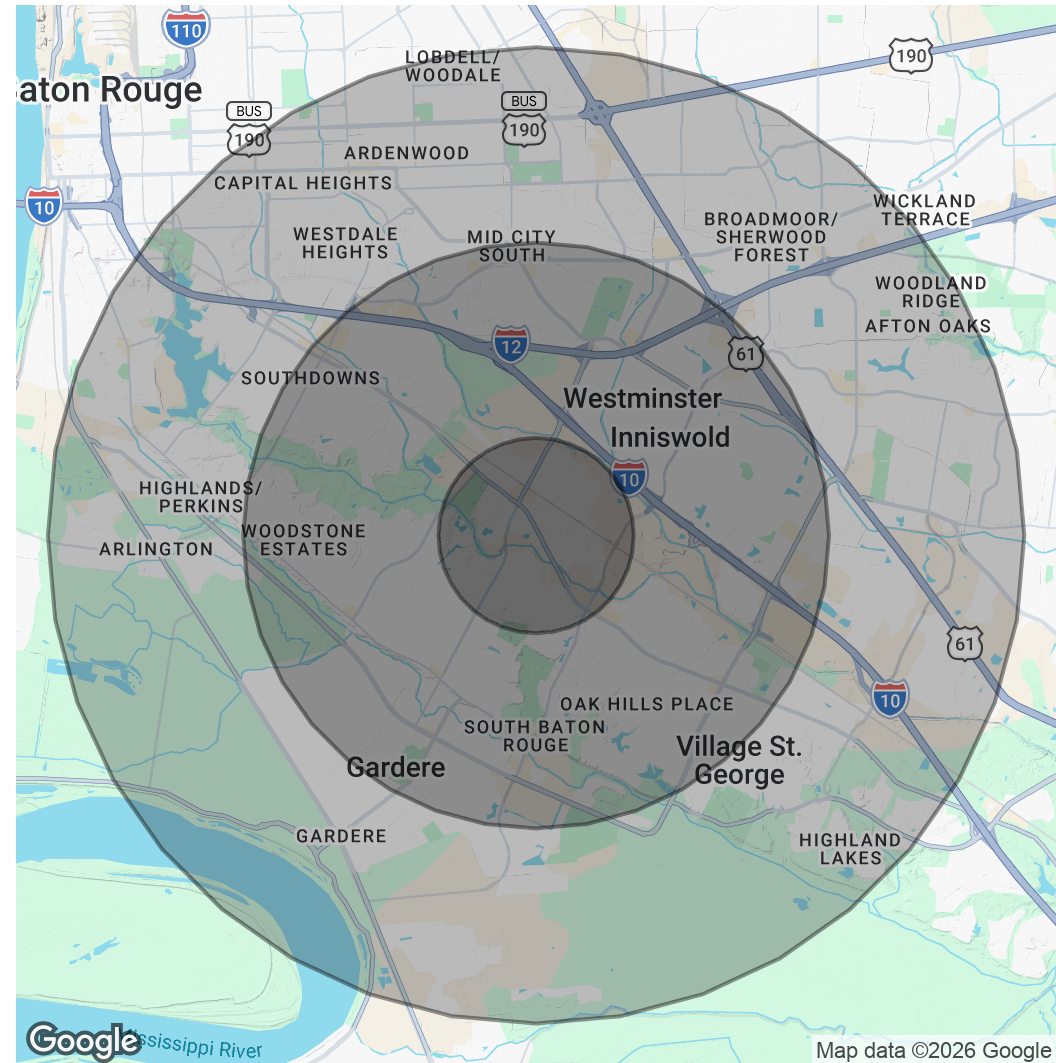
8150 PERKINS RD, BATON ROUGE, LA 70810

7,580 SF

POPULATION	1 MILE	3 MILES	5 MILES
Total Population	7,951	71,090	171,187
Average Age	42	41	39
Average Age (Male)	40	40	38
Average Age (Female)	43	42	40

HOUSEHOLDS & INCOME	1 MILE	3 MILES	5 MILES
Total Households	3,936	32,018	74,755
# Of Persons Per HH	2	2.2	2.3
Average HH Income	\$93,264	\$111,117	\$100,263
Average House Value	\$361,742	\$430,128	\$383,977

Demographics data derived from AlphaMap



BRIAN NICOLICH
Commercial Sales & Leasing
225.229.4371
brian@sr-cre.com

SAURAGE ROTENBERG COMMERCIAL REAL ESTATE, LLC
5135 Bluebonnet Boulevard
Baton Rouge, LA 70809
225.766.0000 | sauragerotenberg.com

The information contained herein has either been given to us by property owners or is from sources deemed reliable and is believed to be correct, it is not in any way warranted or guaranteed by Saurage Rotenberg Commercial Real Estate. This information is submitted subject to errors, omissions, changes in price, rental or other conditions, withdrawal without notice, and to any special listing conditions imposed by the principals. Licensed in Louisiana & Mississippi.

For more information, please contact:

BRIAN NICOLICH

Commercial Sales & Leasing

DIRECT: 225.229.4371
OFFICE: 225.766.0000
EMAIL: brian@sr-cre.com



SAURAGE ROTENBERG
COMMERCIAL REAL ESTATE

TEL: 225.766.0000

WEB: SAURAGEROTENBERG.COM

SAURAGE ROTENBERG COMMERCIAL REAL ESTATE, LLC
5135 BLUEBONNET BOULEVARD
BATON ROUGE, LA 70809

The information contained herein has either been given to us by property owners or is from sources deemed reliable and is believed to be correct, it is not in any way warranted or guaranteed by Saurage Rotenberg Commercial Real Estate. This information is submitted subject to errors, omissions, changes in price, rental or other conditions, withdrawal without notice, and to any special listing conditions imposed by the principals. Licensed in Louisiana & Mississippi.