

FOR SALE

±27,765 SF NEW CLASS "A" INDUSTRIAL BUILDING

8422 Commonwealth Ave., Buena Park, CA 90621

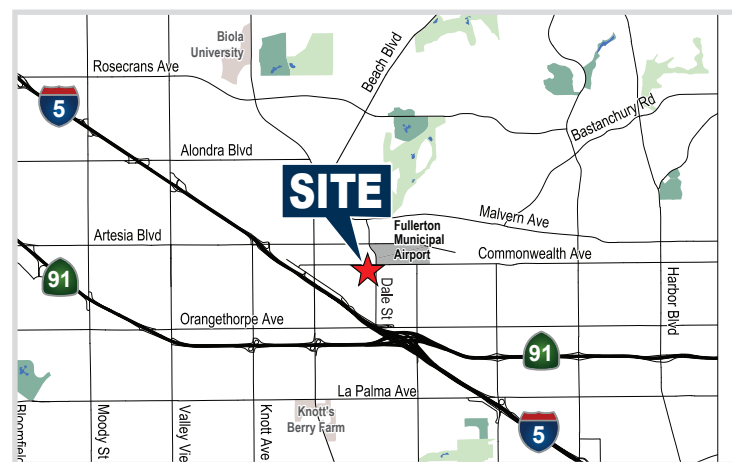


*Building rendering is for demonstration purposes only, and does not reflect the actual purchase opportunity

PROPERTY FEATURES

- ±27,765 SF Brand New Class "A" Industrial Building
- ±4,000 SF Two Story Office (Configuration To Suit):
 - ±2,000 SF First Floor Office
 - ±2,000 SF Second Floor Office
- 30' Clear Height
- Four (4) Dock High Positions w/ Pit Levelers
- One (1) Ground Level Door
- ESFR Sprinkler System
- ±1.37 Acre Lot Size
- ± 27 Parking Stalls
- 800 Amps Electrical Service

Note: Measurements and sizes are approximate and are subject to change.



Another Quality Project By:



SELDEN MCKNIGHT
Vice President | Partner
Lic. #02027919
(714) 935-2323
smcknight@voitco.com

STAN S. KWAK
Senior VP | Partner
Lic. #01824776
(714) 935-2327
skwak@voitco.com

Voit

REAL ESTATE SERVICES



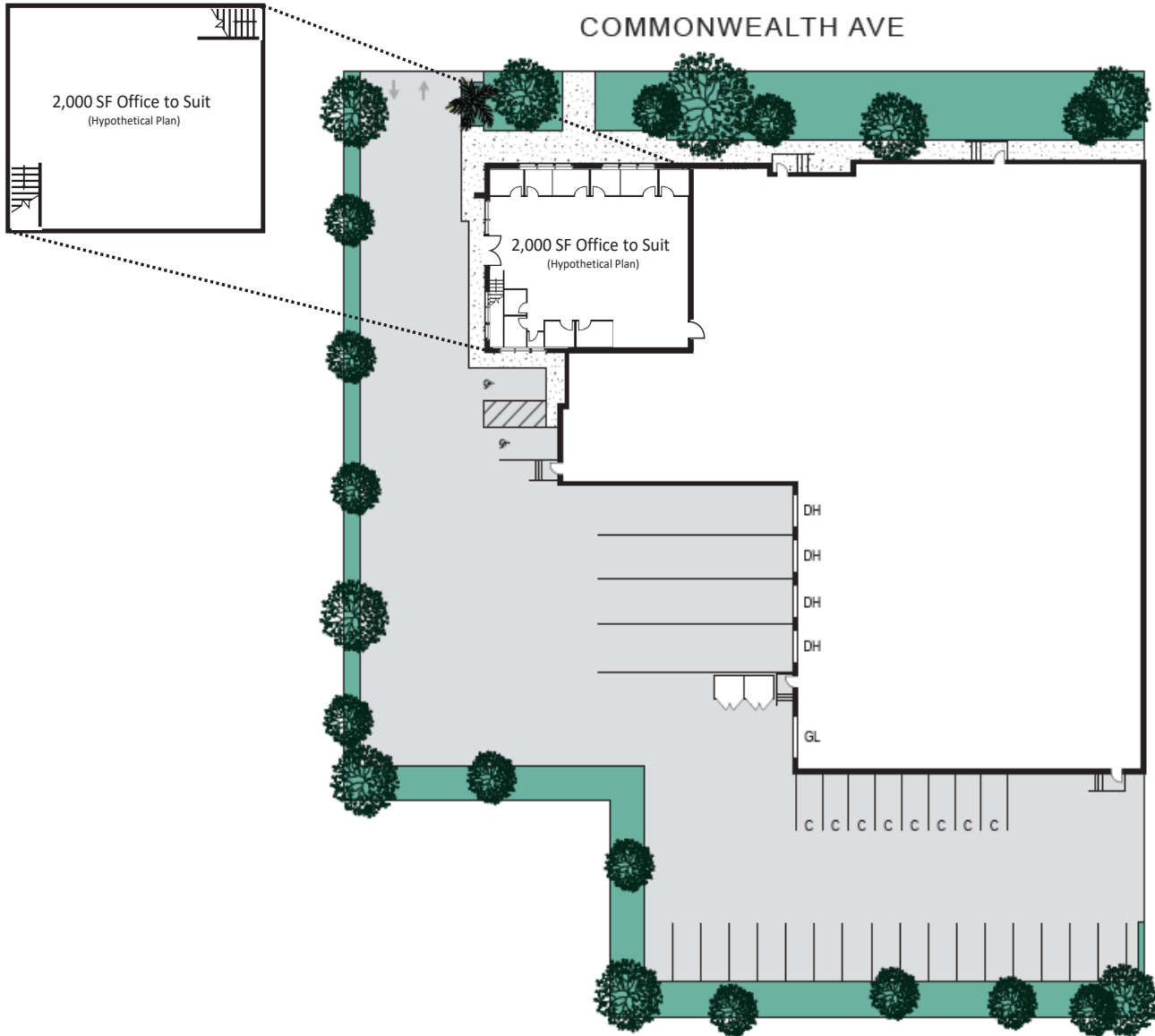
2400 E. Katella Avenue, Suite 750
Anaheim, CA 92806
www.VoitCo.com

FOR SALE

±27,765 SF NEW CLASS "A" INDUSTRIAL BUILDING

8422 Commonwealth Ave., Buena Park, CA 90621

SITE PLAN



Another Quality Project By:



Note: Drawing not to scale. Measurements and sizes are approximate and are subject to change.

SELDEN MCKNIGHT
Vice President | Partner
Lic. #02027919
(714) 935-2323
smcknight@voitco.com

STAN S. KWAK
Senior VP | Partner
Lic. #01824776
(714) 935-2327
skwak@voitco.com

Voit
REAL ESTATE SERVICES

CLIENT
RESOURCE GROUP

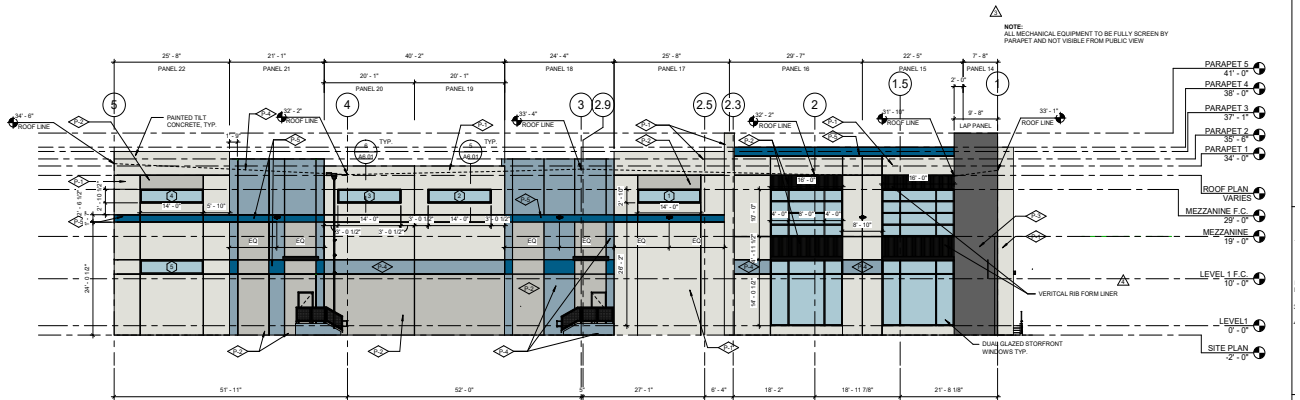
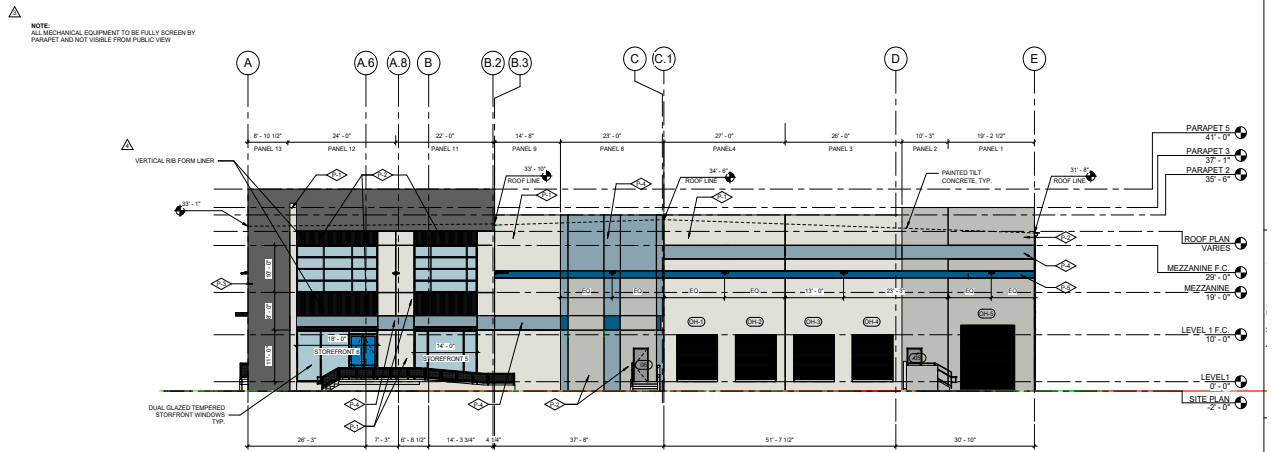
2400 E. Katella Avenue, Suite 750
Anaheim, CA 92806
www.VoitCo.com

FOR SALE

±27,765 SF NEW CLASS "A" INDUSTRIAL BUILDING

8422 Commonwealth Ave., Buena Park, CA 90621

ELEVATIONS



Note: Drawing not to scale. Measurements and sizes are approximate and are subject to change.

SELDEN MCKNIGHT
Vice President | Partner
Lic. #02027919
(714) 935-2323
smcknight@voitco.com

STAN S. KWAK
Senior VP | Partner
Lic. #01824776
(714) 935-2327
skwak@voitco.com

Another Quality Project By:

Dynamic Builders
BUILDERS • DEVELOPERS

Voit
REAL ESTATE SERVICES

CLIENT
RESOURCE GROUP

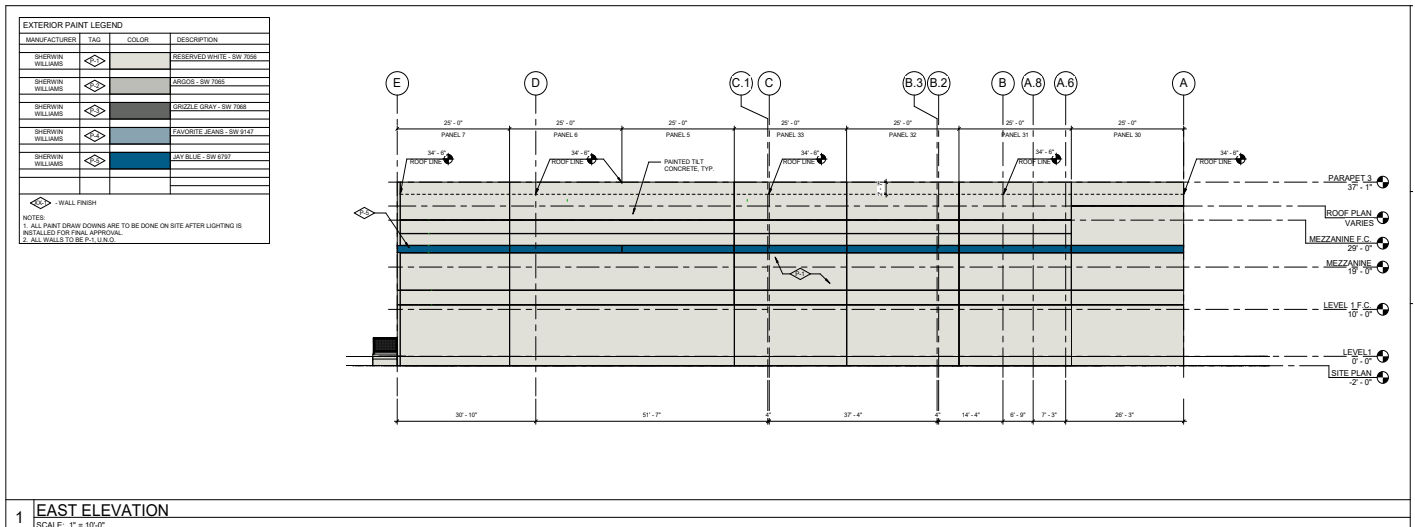
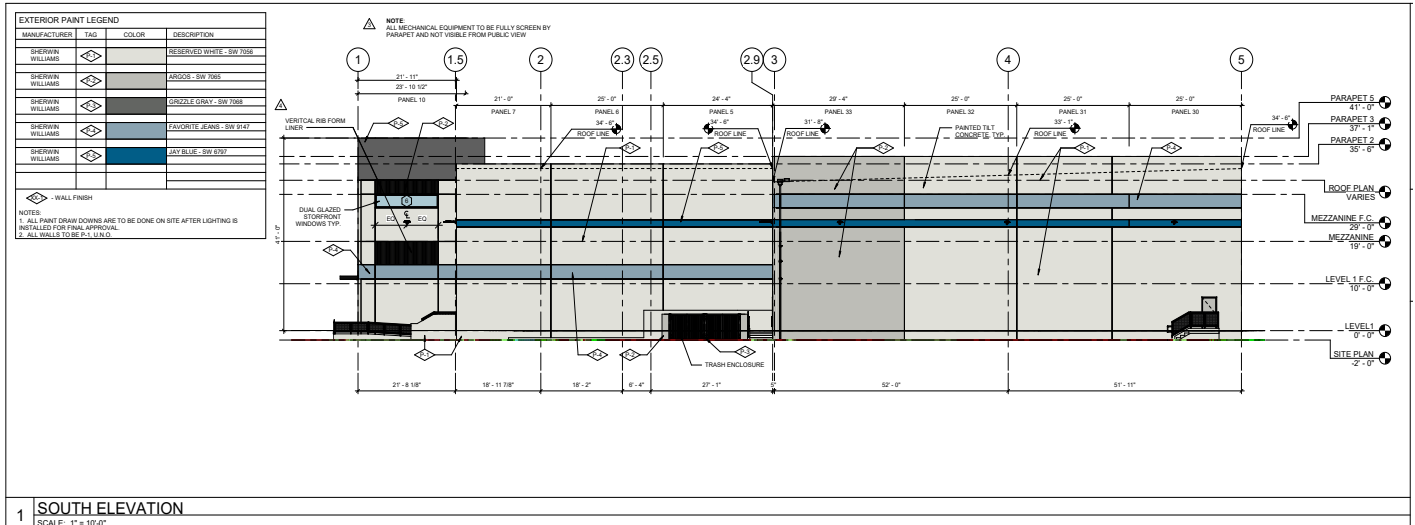
2400 E. Katella Avenue, Suite 750
Anaheim, CA 92806
www.VoitCo.com

FOR SALE

±27,765 SF NEW CLASS "A" INDUSTRIAL BUILDING

8422 Commonwealth Ave., Buena Park, CA 90621

ELEVATIONS



Another Quality Project By:



Note: Drawing not to scale. Measurements and sizes are approximate and are subject to change.

SELDEN MCKNIGHT
Vice President | Partner
Lic. #02027919
(714) 935-2323
smcknight@voitco.com

STAN S. KWAK
Senior VP | Partner
Lic. #01824776
(714) 935-2327
skwak@voitco.com

Voit
REAL ESTATE SERVICES

CLIENT
RESOURCE GROUP

2400 E. Katella Avenue, Suite 750
Anaheim, CA 92806
www.VoitCo.com