



**FOR LEASE**

# Grand Meadow Office Condo

5151 Meadow Ranch Suite 105 Richmond, TX 77407



## Chris Abel

Commercial Director  
chris.abel@kwcommercial.com  
(281) 552-8423

## Swapna Patel

KW Premier Realty  
281-300-9823  
swapnatech@gmail.com

## Abel Property Group

KW Commercial Signature  
920 S Fry Road,  
Katy, TX 77450  
www.kwcommercial.com

## Property Overview

5151 Meadow Ranch Parkway, Suite 105 offers a well-designed, move-in ready office condo ideal for professional users seeking a polished and efficient workspace in the heart of Richmond.

This thoughtfully laid-out suite features four private offices, a welcoming lobby/reception area, a kitchenette, and a private restroom — providing everything a small business needs in a functional and professional setting.

Perfect for attorneys, CPAs, consultants, therapists, insurance agencies, real estate professionals, or other service-based businesses, the suite offers a clean, efficient layout that maximizes both privacy and client-facing appeal.

Located within a newly constructed, professionally designed office condominium development, the property offers modern finishes and efficient layouts tailored for today's professional users. The site provides convenient access to major thoroughfares, retail amenities, and the growing residential base of the Richmond/Rosenberg area, making it an ideal choice for businesses serving the local community.

Call Broker for lease rates.

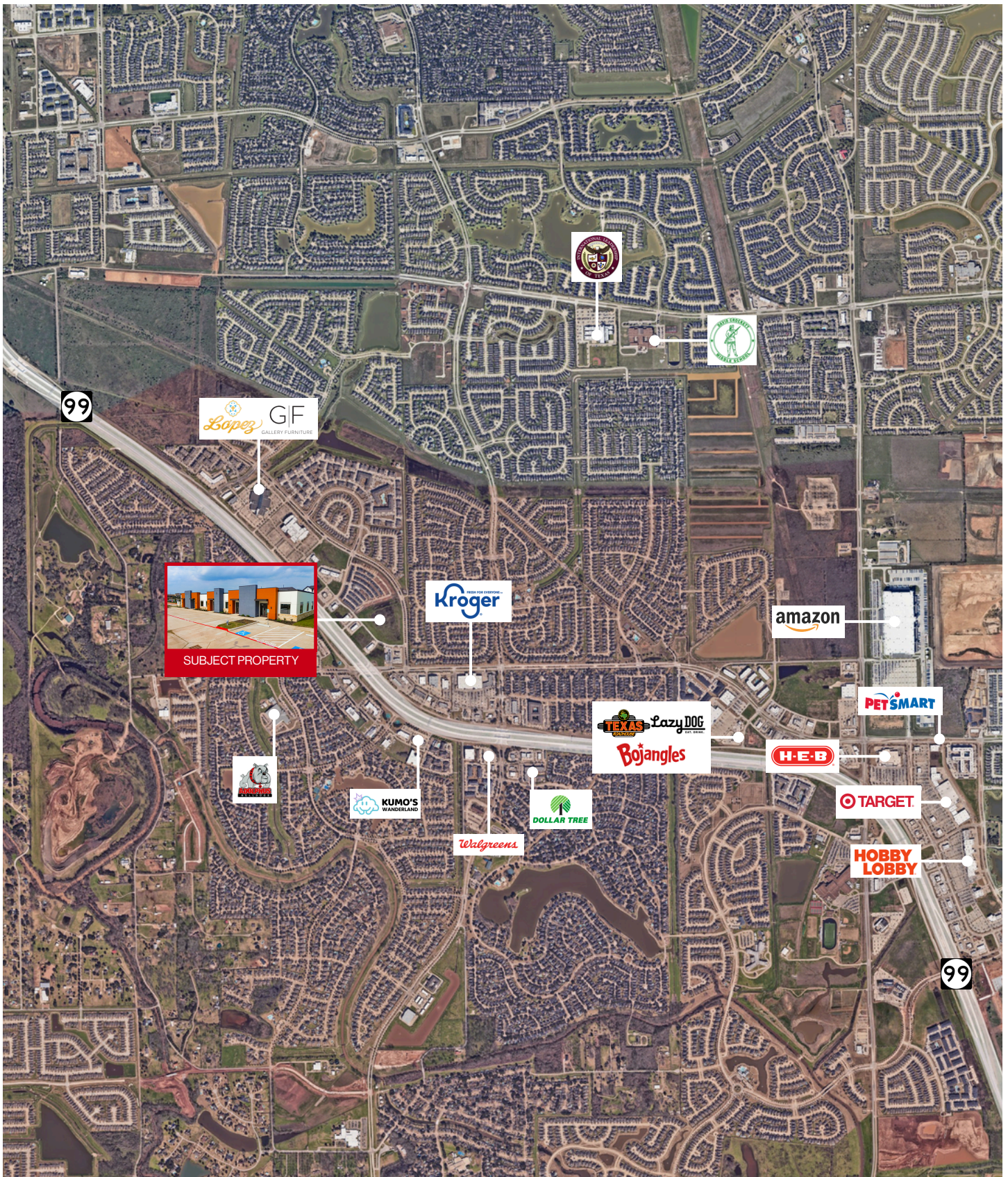
### Property Highlights

- Approximately 1,200 SF
- Brand new construction
- Well-connected location near retail and major routes
- High-end finishes throughout
- Average household income of \$130,000+ within a 1-mile radius
- Visible from Grand Parkway

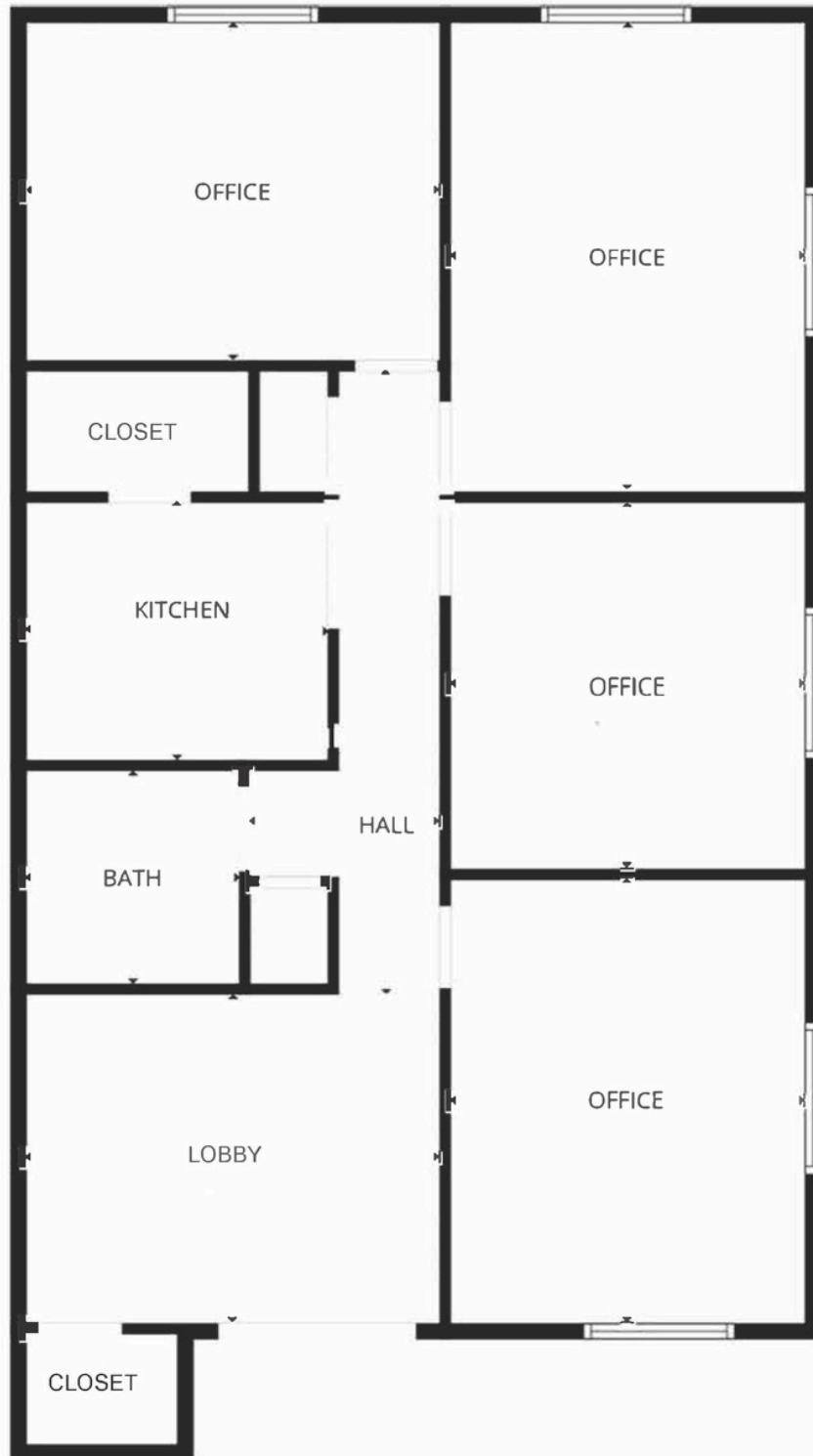


Each Office Is Independently Owned and Operated.

# LOCATION & SURROUNDING BUSINESSES



# FLOOR PLAN



1200 SF Approx. Net Rentable Area

\* ESTIMATED DIMENSIONS ARE BASED ON ROOM INTERIORS AND DO NOT INCLUDE WALL THICKNESSES; HIGHLY RECOMMEND TO VERIFY \*.

## EXTERIOR IMAGES

