

**FOR LEASE**  
**± 1,204 - 3,100 SF AVAILABLE**

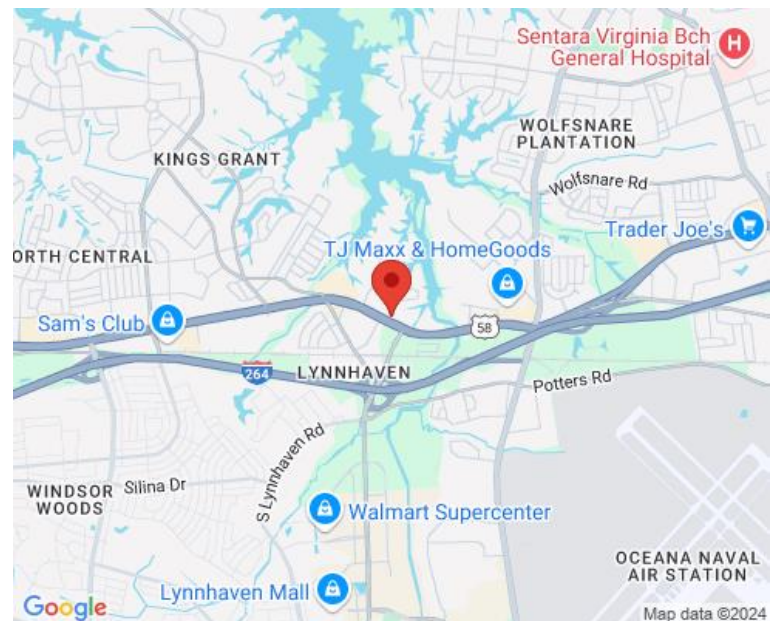


## PROPERTY OVERVIEW

## AREA MAP

Lynnhaven Convenience Center is located at a signalized intersection on Virginia Beach Boulevard. Ideal location for any retail, office or service business.

- Close proximity to neighboring Hobby Lobby, Big Lots and Onelife Fitness anchored shopping center
- Less than 1/2 mile from I-264
- Easy access at signalized intersection with good visibility fronting Virginia Beach Blvd
- **AVAILABLE: ±1,204 - 3,100 SF**



## DEMOGRAPHICS

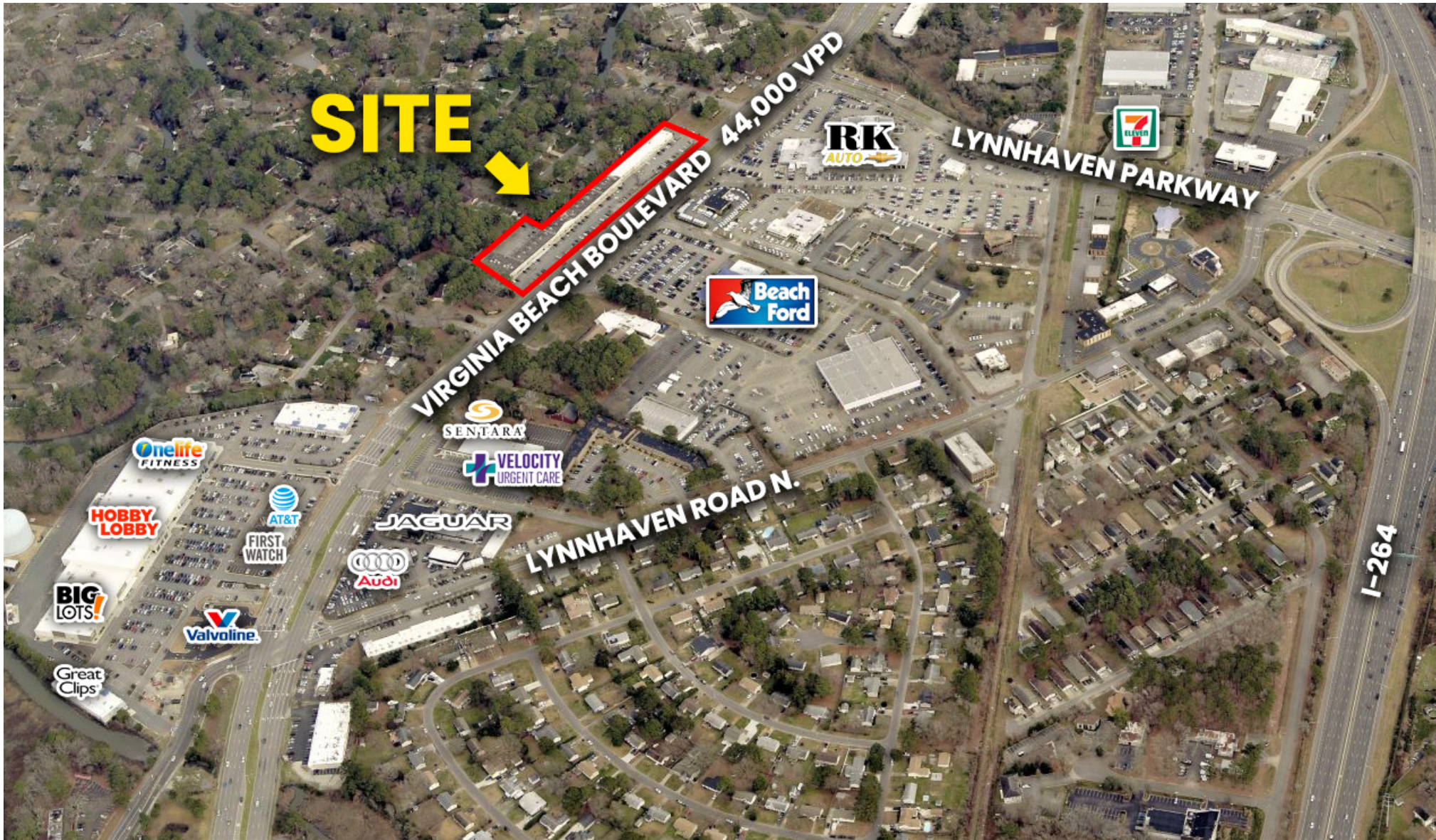
Radius:	1 mile	3 mile	5 mile
Population:	10,272	87,863	228,141
Average HH Income:	\$89,024	\$91,949	\$94,198
Traffic Count:	44,000 VPD		

FOR MORE INFORMATION, PLEASE CONTACT:

**COLE WERKHEISER**  
 (757) 490-3141  
[cwerkheiser@pembrokerealty.com](mailto:cwerkheiser@pembrokerealty.com)

**Pembroke Realty Group**  
 4433 Corporation Lane, Suite 250  
 Virginia Beach, VA 23462  
[www.pembrokerealty.com](http://www.pembrokerealty.com)





FOR MORE INFORMATION, PLEASE CONTACT:

**COLE WERKHEISER**

(757) 490-3141

[cwerkheiser@pembrokerealty.com](mailto:cwerkheiser@pembrokerealty.com)

**Pembroke Realty Group**

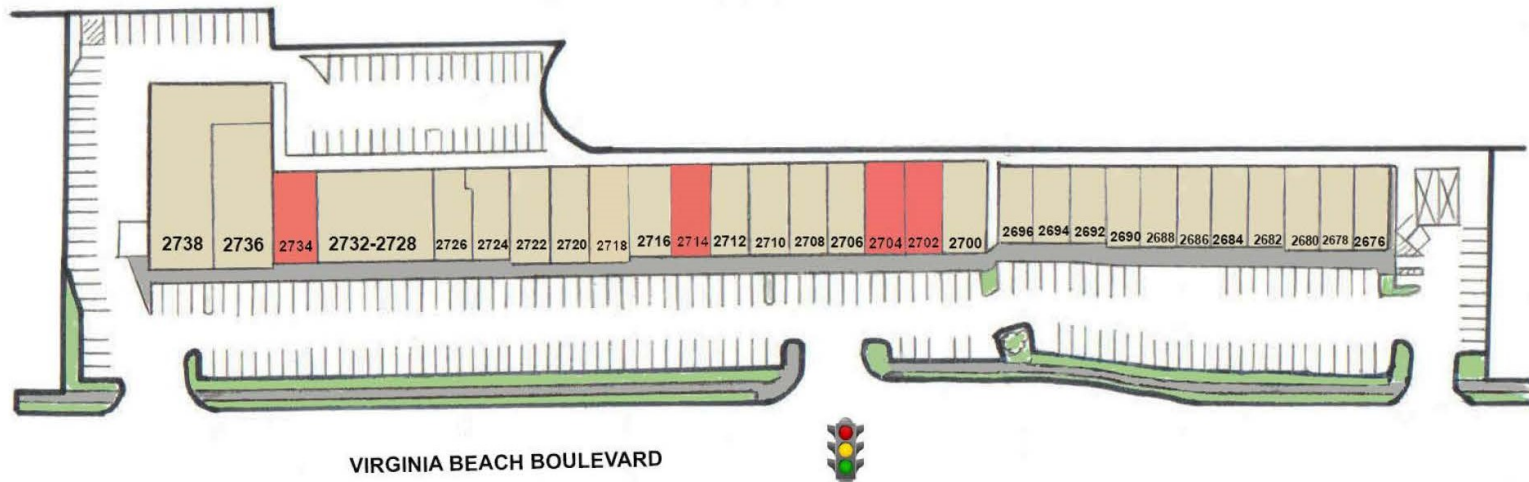
4433 Corporation Lane, Suite 250

Virginia Beach, VA 23462

[www.pembrokerealty.com](http://www.pembrokerealty.com)



## LYNNHAVEN CONVENIENCE CENTER



Updated 9/25/2024

### 2700 BUILDING

### 2600 BUILDING

<u>SUITE</u>	<u>TENANT</u>	<u>SUITE</u>	<u>TENANT</u>	<u>SUITE</u>	<u>TENANT</u>
2738	Audio One	2716	Domino's Pizza	2696	Hair Salon
2736	Salon Centric	<b>2714</b>	<b>AVAILABLE (1,204 SF)</b>	2694	CBD
2734	<b>AVAILABLE Former Hot Yoga (1,500 SF)</b>	2712	Chiropractor	2692	Coins
2732-2728	Sentara	2710	Department of Military Affairs	2690	Performance Pilates
2726	Allstate	2708	Fastax	2688	Frame-N-Art
2724	Twisted Sister Cupcakes	2706	Acredale Animal Hospital	2686	757 Sports Collectibles
2722	Happy Foot	<b>2704-2702</b>	<b>AVAILABLE (3,100 SF)</b>	2684	Preppie Pooch
2720	Blinds N More	2700	Lash Avenue	2682	Dan Ryan's for Men
2718	Sky Nail Bar			2680	Feather-N-Fin
				2678-2676	Iggles

FOR MORE INFORMATION, PLEASE CONTACT:

**COLE WERKHEISER**  
 (757) 490-3141  
[cwerkheiser@pembrokerealty.com](mailto:cwerkheiser@pembrokerealty.com)

**Pembroke Realty Group**  
 4433 Corporation Lane, Suite 250  
 Virginia Beach, VA 23462  
[www.pembrokerealty.com](http://www.pembrokerealty.com)