

THE SHOPS AT PORTOLA HILLS

901 Portola Oaks, Lake Forest, CA

1,200 - 10,000 SF

AVAILABLE FOR LEASE



Property Features

- Occupancy Scheduled for 2024
- Available unit sizes range from 1,200 – 10,000 SF
- Easy access to 241 Toll Road, Portola, Bake, Lake Forest and El Toro.
- Adjacent to Iron Ridge private community.
- Affluent, fast growing community comprised of new million dollar homes.
- Location benefits from 8 mm square feet of office / industrial space in the immediate trade area.
- Surrounding area includes corporate headquarters of Oakley, Black & Decker, Panasonic, Cox Communications and more.



Doug Killian

Senior Vice President | Partner

949.263.5322

dkillian@voitco.com

Lic. #00887784



2020 Main Street, Suite 100, Irvine, CA 92614 • 949.851.5100 • 949.261.9092 Fax • Lic #01333376 | www.voidco.com

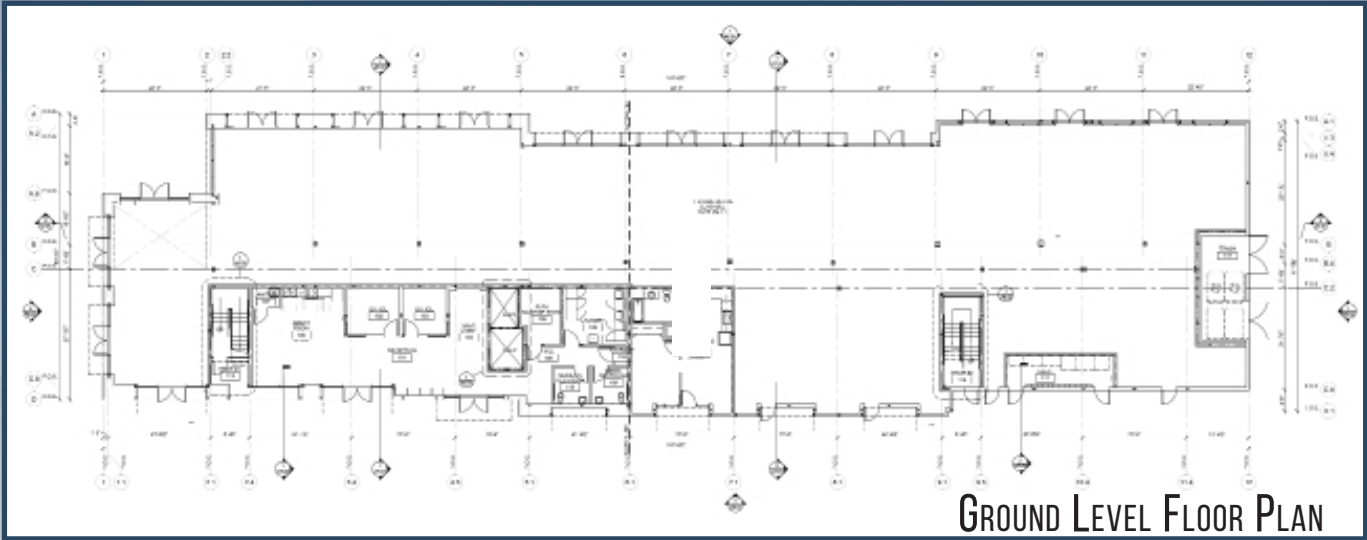
1,200 - 10,000 Square Feet

For Lease | Portola Retail Center

901 Portola Oaks, Lake Forest, CA

Voit

REAL ESTATE SERVICES



GROUND LEVEL FLOOR PLAN



Doug Killian

Senior Vice President | Partner

949.263.5322

dkillian@voitco.com

Lic. #00887784

Voit

REAL ESTATE SERVICES

2020 Main Street, Suite 100, Irvine, CA 92614 • 949.851.5100 • 949.261.9092 Fax • Lic #01333376 | www.voitco.com