

AVAILABLE FOR LEASE

1273 INDUSTRIAL PARKWAY WEST | HAYWARD, CA

**LEE &
ASSOCIATES**
COMMERCIAL REAL ESTATE SERVICES



PROPERTY OVERVIEW:

- 110,000± SF Industrial Business Park on 6.69± Acres
- Close to I-880 in the Heart of Hayward
- Various Sized Units and Configurations
- Heavy Power to Some Units
- Yard Spaces Available
- Flexible Leasing Terms

EXCLUSIVE AGENTS:

David K. Scarpinato, Principal
E \\ dscarpinato@lee-associates.com
P \\ 510.907.3022 | LIC# 01812743

Patrick O'Brien, Principal
E \\ pobrien@lee-associates.com
P \\ 510.907.3023 | LIC# 02086133

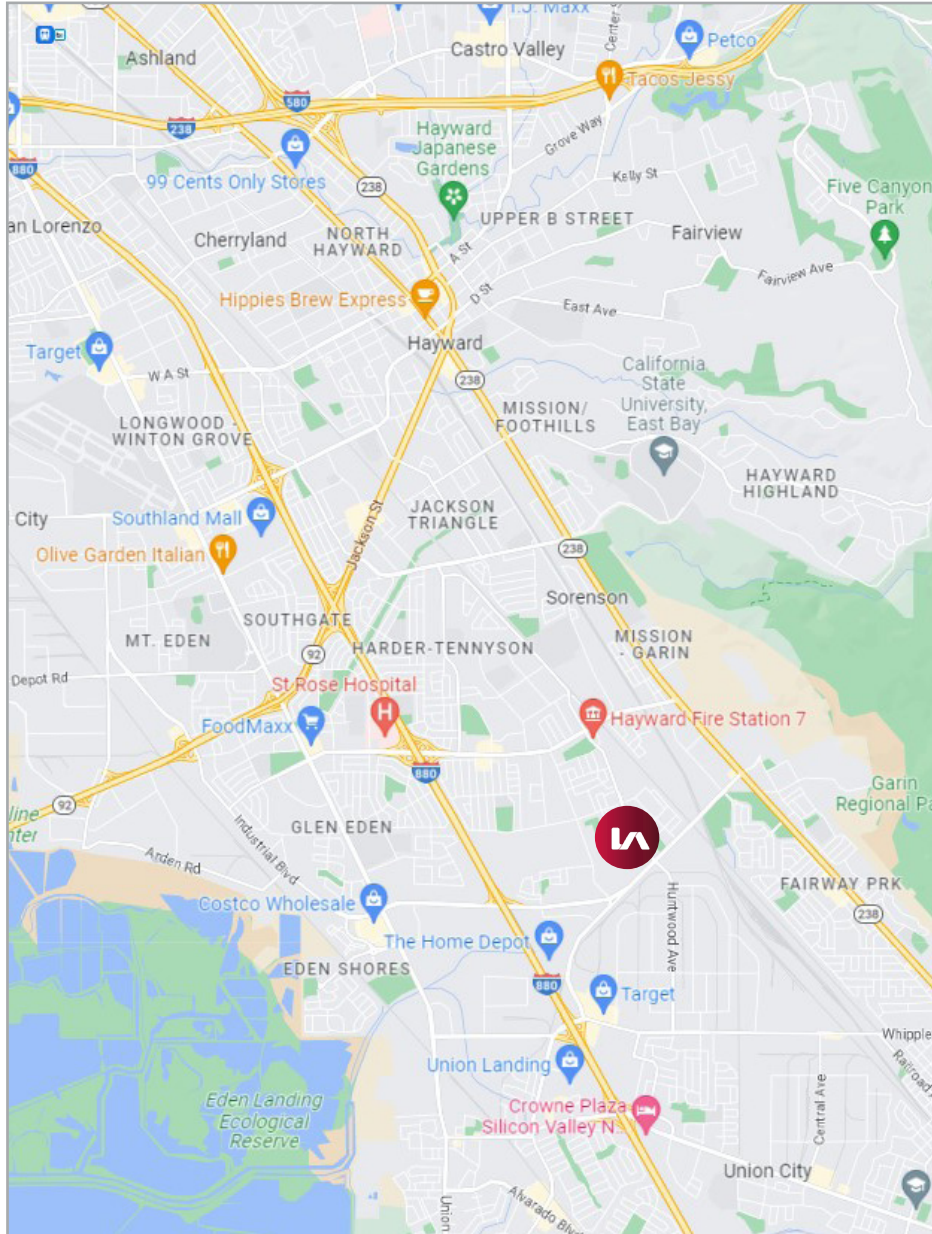
Lee & Associates Oakland Commercial Real Estate \ 555 12th Street, Suite 1725, Oakland, CA 94607 \ www.lee-associates.com

All information furnished regarding property for sale, rental or financing is from sources deemed reliable, but no warranty or representation is made to the accuracy thereof and same is submitted to errors, omissions, change of price, rental or other conditions prior to sale, lease or financing or withdrawal without notice. No liability of any kind is to be imposed on the broker herein.

AVAILABLE FOR LEASE

1273 INDUSTRIAL PARKWAY WEST | HAYWARD, CA

LEE & ASSOCIATES
COMMERCIAL REAL ESTATE SERVICES



LOCATION MAP & AERIAL

110,000± SF INDUSTRIAL BUSINESS PARK



Lee & Associates Oakland Commercial Real Estate \ 555 12th Street, Suite 1725, Oakland, CA 94607 \ www.lee-associates.com

All information furnished regarding property for sale, rental or financing is from sources deemed reliable, but no warranty or representation is made to the accuracy thereof and same is submitted to errors, omissions, change of price, rental or other conditions prior to sale, lease or financing or withdrawal without notice. No liability of any kind is to be imposed on the broker herein.

AVAILABLE FOR LEASE

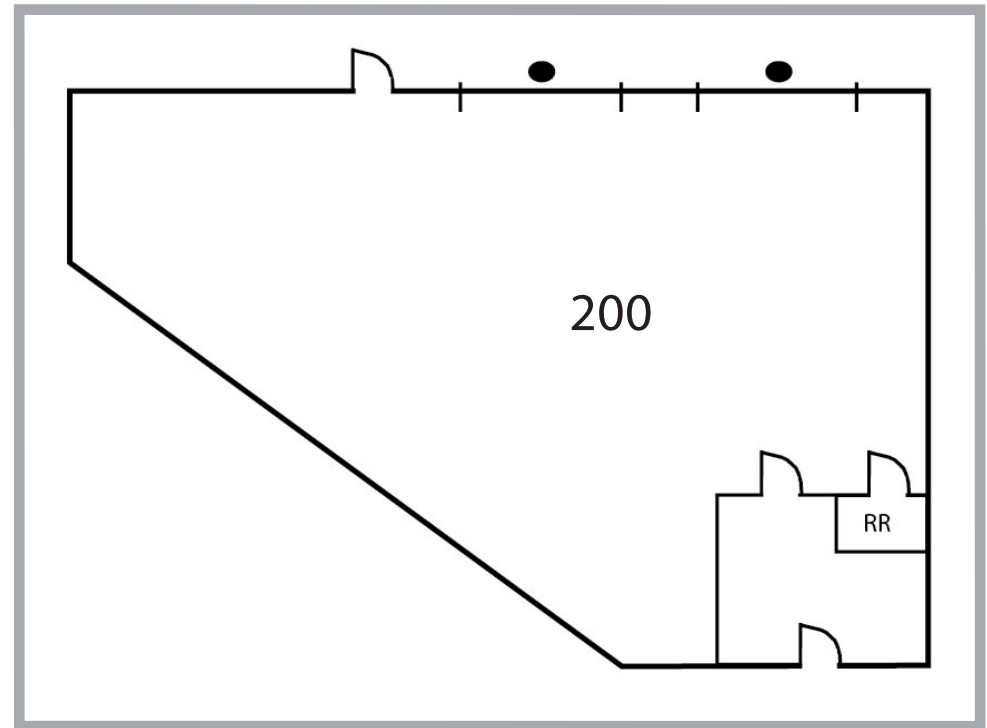
1273 INDUSTRIAL PARKWAY WEST | HAYWARD, CA

SUITE 200 - 4,647± SF

110,000± SF INDUSTRIAL BUSINESS PARK

- 4,647± SF
- Completely Refurbished Interiors
- New Restroom
- 10% Office
- 14' Clear Height
- 2 Grade Level Doors
- End Unit on Industrial Pkwy
- South Hayward Location
- Asking: \$1.55/SF, I.G.

*Can be Combined w/ Suite 220 and/or 230 for
7,260± SF - 8,566± SF Total



EXCLUSIVE AGENTS:

David K. Scarpinato, Principal
E \\ dscarpinato@lee-associates.com
P \\ 510.907.3022 | LIC# 01812743

Patrick O'Brien, Principal
E \\ pobrien@lee-associates.com
P \\ 510.907.3023 | LIC# 02086133

AVAILABLE FOR LEASE

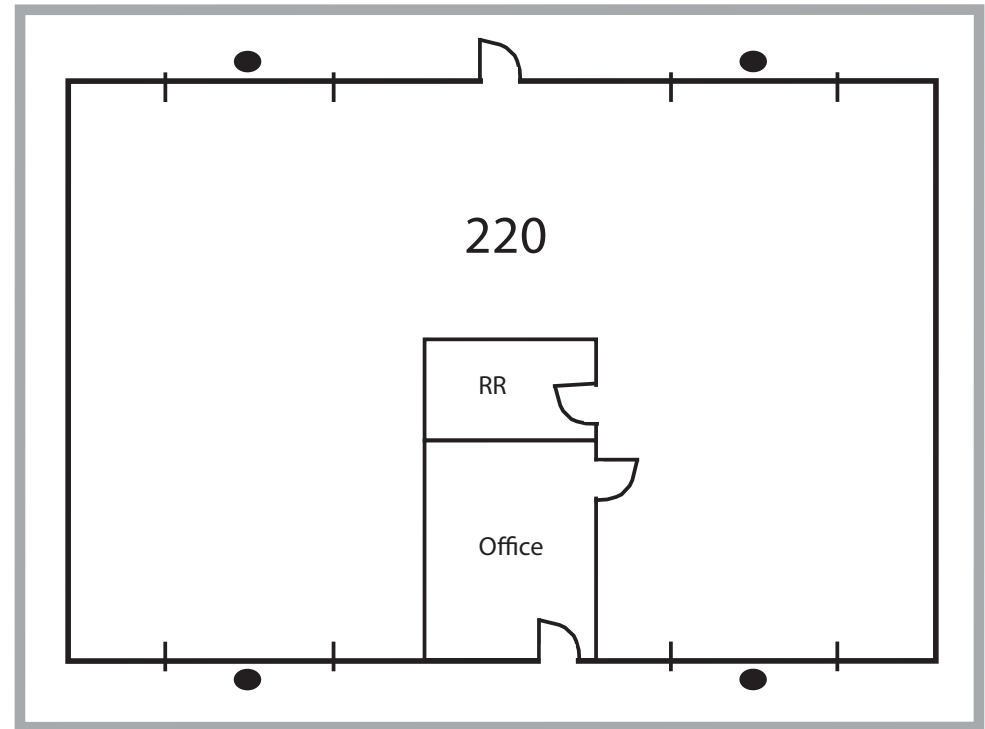
1273 INDUSTRIAL PARKWAY WEST | HAYWARD, CA

SUITE 220 - 2,613± SF

110,000± SF INDUSTRIAL BUSINESS PARK

- 2,613± SF
- 10% Office
- 14' Clear Height
- 4 Grade Level Doors
- Drive Through Access
- South Hayward Location
- Asking: \$1.55/SF, I.G.

*Can be Combined w/ Suite 200 and/or 230 for
3,919± SF - 8,566± SF Total



EXCLUSIVE AGENTS:

David K. Scarpinato, Principal

E \\ dscarpinato@lee-associates.com

P \\ 510.907.3022 | LIC# 01812743

Patrick O'Brien, Principal

E \\ pobrien@lee-associates.com

P \\ 510.907.3023 | LIC# 02086133

AVAILABLE FOR LEASE

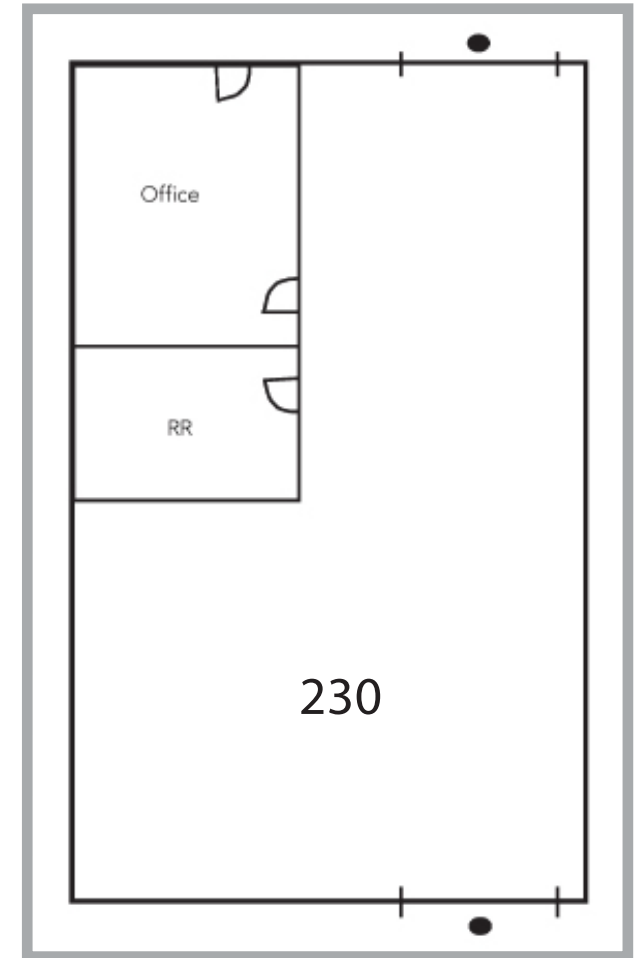
1273 INDUSTRIAL PARKWAY WEST | HAYWARD, CA

SUITE 230 - 1,306± SF

110,000± SF INDUSTRIAL BUSINESS PARK

- 1,306± SF
- 10% Office
- 16' Clear Height
- 2 Grade Level Doors
- South Hayward Location
- Asking: \$1.55/SF, I.G.

*Can be Combined w/ Suite 200 and/or 220 for
3,919± SF - 8,566± SF Total



EXCLUSIVE AGENTS:

David K. Scarpinato, Principal

E \\ dscarpinato@lee-associates.com

P \\ 510.907.3022 | LIC# 01812743

Patrick O'Brien, Principal

E \\ pobrien@lee-associates.com

P \\ 510.907.3023 | LIC# 02086133

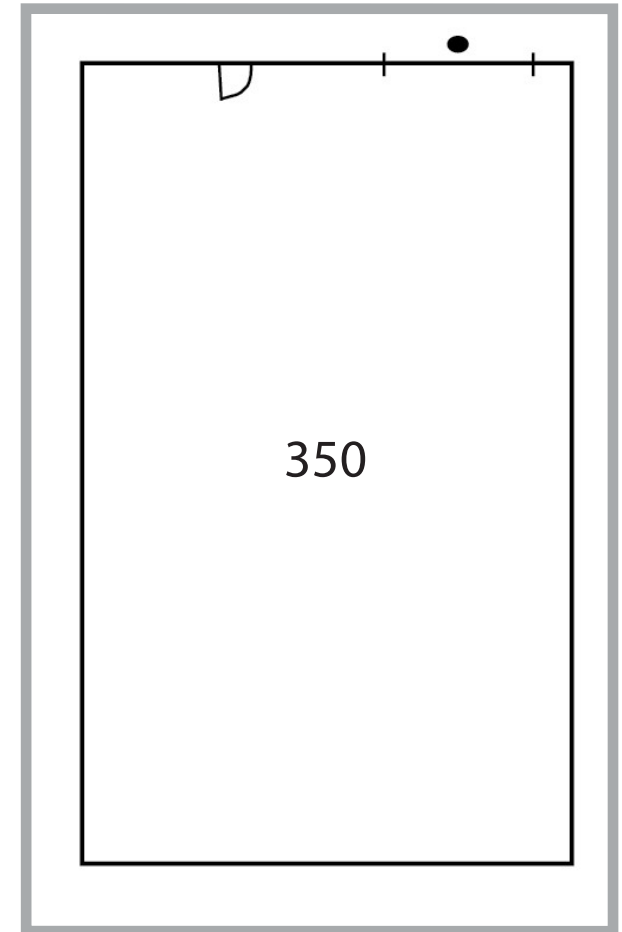
AVAILABLE FOR LEASE

1273 INDUSTRIAL PARKWAY WEST | HAYWARD, CA

SUITE 350 - 2,910± SF

110,000± SF INDUSTRIAL BUSINESS PARK

- 2,910± SF
- 10% Office
- 14' - 18' Clear Height
- 1 Grade Level Doors
- South Hayward Location
- Asking: \$1.50/SF, I.G.



EXCLUSIVE AGENTS:

David K. Scarpinato, Principal

E \\ dscarpinato@lee-associates.com

P \\ 510.907.3022 | LIC# 01812743

Patrick O'Brien, Principal

E \\ pobrien@lee-associates.com

P \\ 510.907.3023 | LIC# 02086133

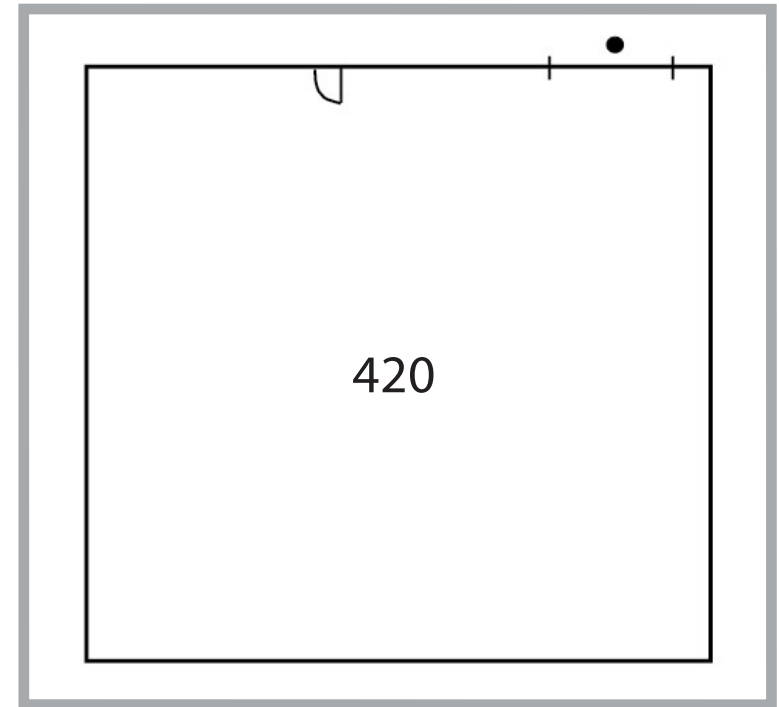
AVAILABLE FOR LEASE

1273 INDUSTRIAL PARKWAY WEST | HAYWARD, CA

SUITE 420 - 5,550± SF

110,000± SF INDUSTRIAL BUSINESS PARK

- 5,550± SF Warehouse Space
- 10% Office
- 14' - 18' Clear Height
- 1 Grade Level Door
- South Hayward Location
- Asking: \$1.55/SF, I.G.



EXCLUSIVE AGENTS:

David K. Scarpinato, Principal

E \\ dscarpinato@lee-associates.com

P \\ 510.907.3022 | LIC# 01812743

Patrick O'Brien, Principal

E \\ pobrien@lee-associates.com

P \\ 510.907.3023 | LIC# 02086133

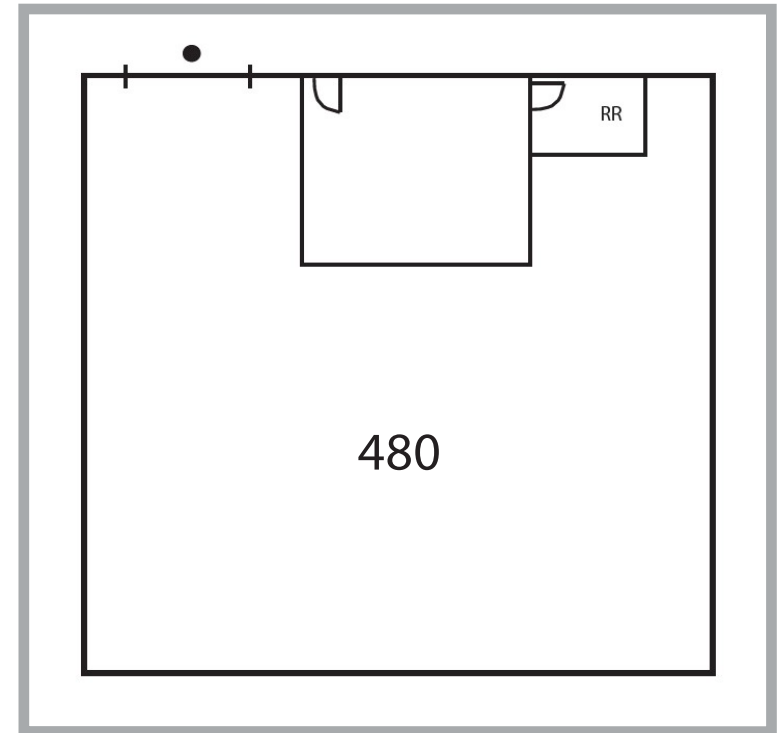
AVAILABLE FOR LEASE

1273 INDUSTRIAL PARKWAY WEST | HAYWARD, CA

SUITE 480 - 4,260± SF

110,000± SF INDUSTRIAL BUSINESS PARK

- 4,260± SF Warehouse Space
- 14' - 18' Clear Height
- 1 Oversized Roll Up Door
- Small Office & Restroom
- Asking: \$1.50/SF, I.G.



EXCLUSIVE AGENTS:

David K. Scarpinato, Principal

E \\ dscarpinato@lee-associates.com

P \\ 510.907.3022 | LIC# 01812743

Patrick O'Brien, Principal

E \\ pobrien@lee-associates.com

P \\ 510.907.3023 | LIC# 02086133

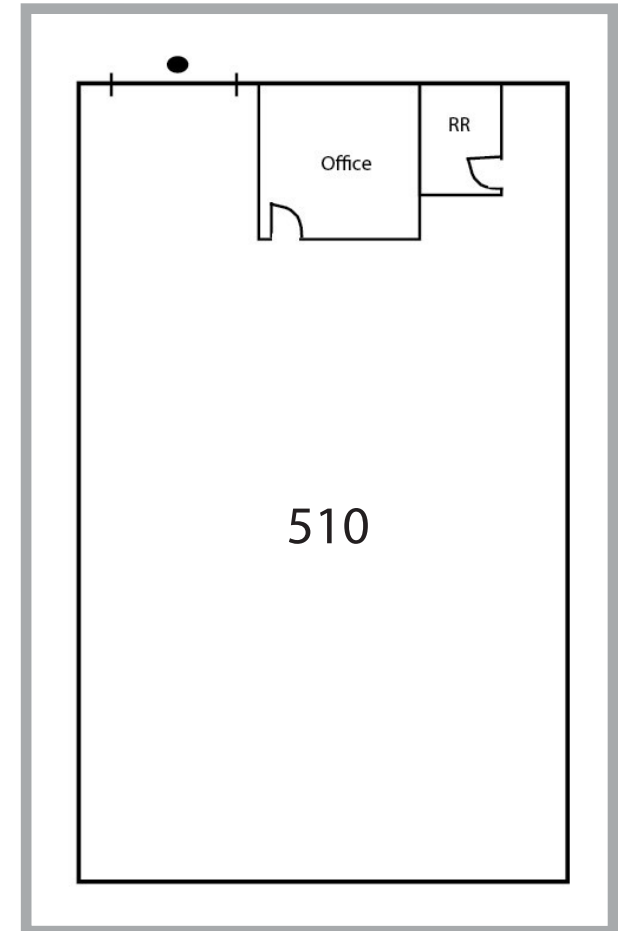
AVAILABLE FOR LEASE

1273 INDUSTRIAL PARKWAY WEST | HAYWARD, CA

SUITE 510 - 4,060± SF

110,000± SF INDUSTRIAL BUSINESS PARK

- 4,060± SF
- 10% Office
- 14' - 18' Clear Height
- 1 Grade Level Door
- South Hayward Location
- Asking: \$1.55/SF, I.G.



EXCLUSIVE AGENTS:

David K. Scarpinato, Principal

E \\ dscarpinato@lee-associates.com

P \\ 510.907.3022 | LIC# 01812743

Patrick O'Brien, Principal

E \\ pobrien@lee-associates.com

P \\ 510.907.3023 | LIC# 02086133

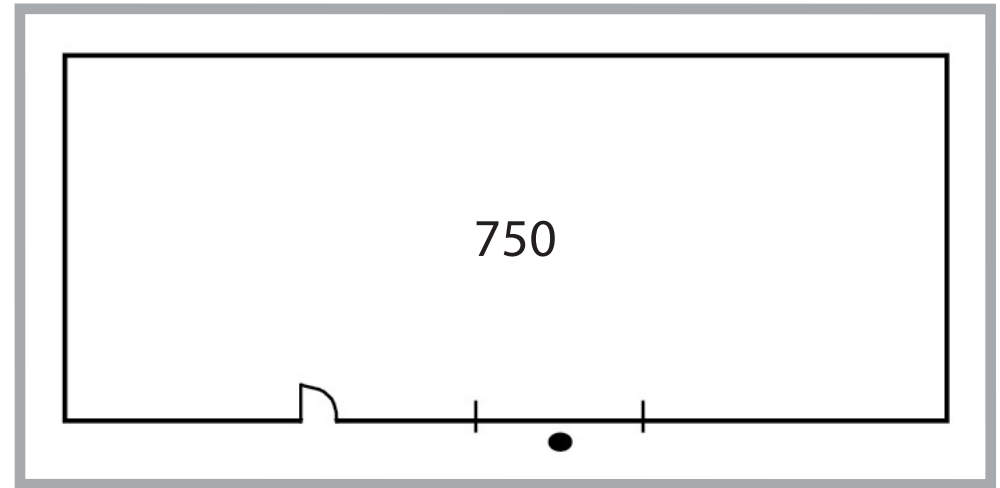
AVAILABLE FOR LEASE

1273 INDUSTRIAL PARKWAY WEST | HAYWARD, CA

SUITE 750 - 7,540± SF

110,000± SF INDUSTRIAL BUSINESS PARK

- 7,540± SF
- 100% Warehouse/Dead Storage
- 24' Clear Height
- 1 Oversized Grade Level Door
- Will Build Office/Restroom to Suit for Term Deals
- South Hayward Location
- Asking: \$1.00/SF, I.G.



EXCLUSIVE AGENTS:

David K. Scarpinato, Principal

E \\ dscarpinato@lee-associates.com

P \\ 510.907.3022 | LIC# 01812743

Patrick O'Brien, Principal

E \\ pobrien@lee-associates.com

P \\ 510.907.3023 | LIC# 02086133

AVAILABLE FOR LEASE

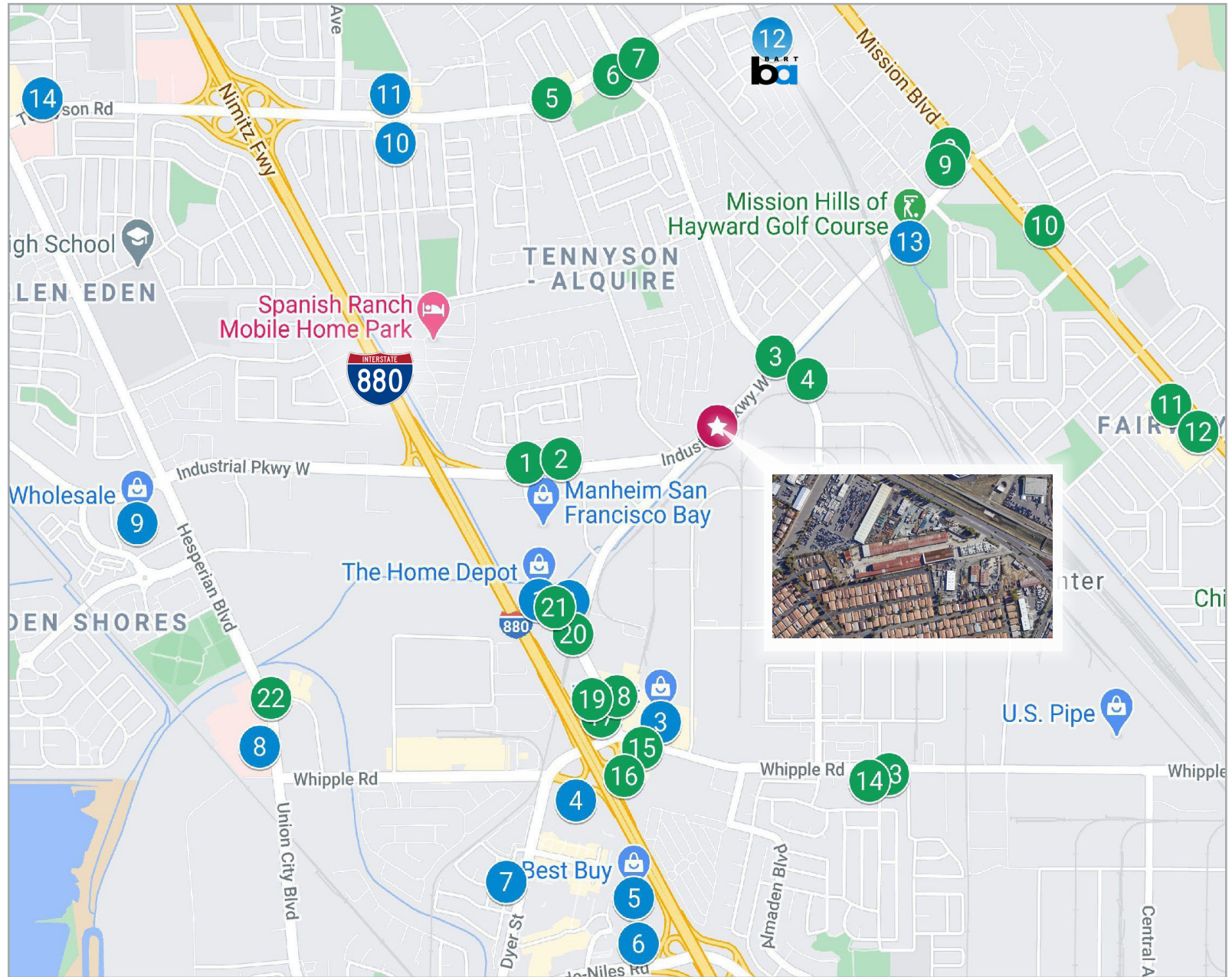
1273 INDUSTRIAL PARKWAY WEST | HAYWARD, CA

Nearby Amenities

- 1 The Home Depot
- 2 FoodMaxx
- 3 Target
- 4 Walmart
- 5 Best Buy
- 6 Lowe's Home Improvement
- 7 Michaels
- 8 Kaiser Union City
- 9 Costco Wholesale
- 10 Walgreens
- 11 dd's DISCOUNTS
- 12 South Hayward Bart
- 13 Mission Hills Golf Course
- 14 Kaiser Hwd-Sleepy Hollow

Food & Beverage

- 1 Starbucks
- 2 Straw Hat Pizza
- 3 Tacos Uruapan
- 4 Fanale Drinks
- 5 Don Polvoron Bakery
- 6 Little Caesars Pizza
- 7 Taqueria Senaida's
- 8 Red Chili Thai Restaurant
- 9 Bob's Hoagy Steaks
- 10 Pupuseria Las Cabañas
- 11 Jack in the Box
- 12 Sonic Drive-In
- 13 Whipple Taqueria
- 14 Pepper Tree Lounge
- 15 Starbucks
- 16 Wingstop
- 17 Denny's
- 18 Panda Express
- 19 McDonald's
- 20 Taco Bell
- 21 Uncle Yu 永康又一家
- 22 Kabila



Lee & Associates Oakland Commercial Real Estate \ 555 12th Street, Suite 1725, Oakland, CA 94607 \ www.lee-associates.com

All information furnished regarding property for sale, rental or financing is from sources deemed reliable, but no warranty or representation is made to the accuracy thereof and same is submitted to errors, omissions, change of price, rental or other conditions prior to sale, lease or financing or withdrawal without notice. No liability of any kind is to be imposed on the broker herein.