

AVAILABLE



ACCESS Commercial, LLC

Papillion, NE



NEW MIXED USE DEVELOPMENT

COMMERCIAL LOTS AVAILABLE

PROPERTY HIGHLIGHTS:

- Regional location in the highest growth area in the Omaha Metro
- Next to Shadow Lake Towne Center, the second most visited shopping center in the metro with over 5.8 million visits annually
- Anchored by new 168-unit luxury apartment complex and 180 single family lots
- Easy access to Highway 370
- New Papillion/LaVista High School located directly south
- Intended uses include: Retail, Restaurant, and Professional Office; i.e. C-Store, Daycare, and Coffee

CONTACT LISTING AGENTS FOR MORE INFORMATION:

ADDRESS:

S 72nd Street & Schram Rd
Papillion, NE

LOT SIZE:

Lot 1: 1.614 AC
Lot 2: 1.409 AC
Lot 3: 0.990 AC
Lot 4: 1.302 AC

PRICE:

Negotiable

WWW.ACCESSCOMMERCIAL.COM

facebook.com/accesscommercial
instagram.com/accessretail
linkedin.com/access-commercial-llc

Kirk Hanson
kirk@accesscommercial.com
C: (402) 616 - 2580

Rocky Pryor
rocky@accesscommercial.com
C: (402) 216 - 7887

1 AERIAL & DEMOGRAPHICS



DEMOGRAPHICS:

	1 Mile:	3 Mile:	5 Mile:
Population	7,486	45,048	118,998
Total Households	2,875	15,931	44,155
Average HH Income	\$91,733	\$108,232	\$109,212

35.7
MEDIAN
AGE

9,266
VEHICLES PER
DAY

31,575
EMPLOYEES
IN AREA

2,615
BUSINESSES
IN AREA

CONTACT LISTING AGENT FOR MORE INFORMATION:

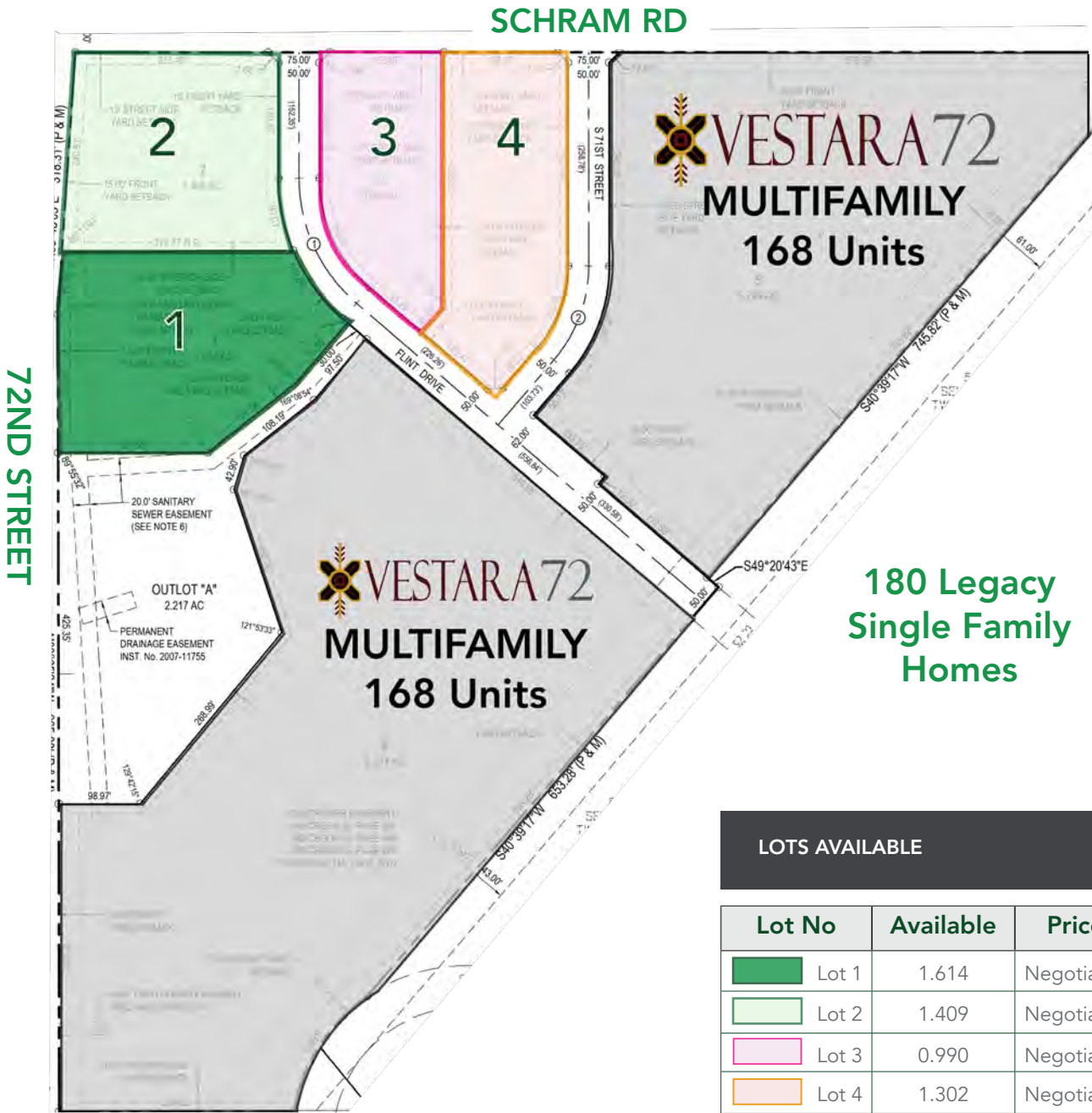
Kirk Hanson
kirk@accesscommercial.com
C: (402) 616 - 2580

Rocky Pryor
rocky@accesscommercial.com
C: (402) 216 - 7887

WWW.ACCESSCOMMERCIAL.COM



ACCESS Commercial, LLC



CONTACT LISTING AGENT FOR MORE INFORMATION:

Kirk Hanson
 kirk@accesscommercial.com
 C: (402) 616 - 2580

Rocky Pryor
 rocky@accesscommercial.com
 C: (402) 216 - 7887

WWW.ACCESSCOMMERCIAL.COM





CONTACT LISTING AGENT FOR MORE INFORMATION:

Kirk Hanson
kirk@accesscommercial.com
C: (402) 616 - 2580

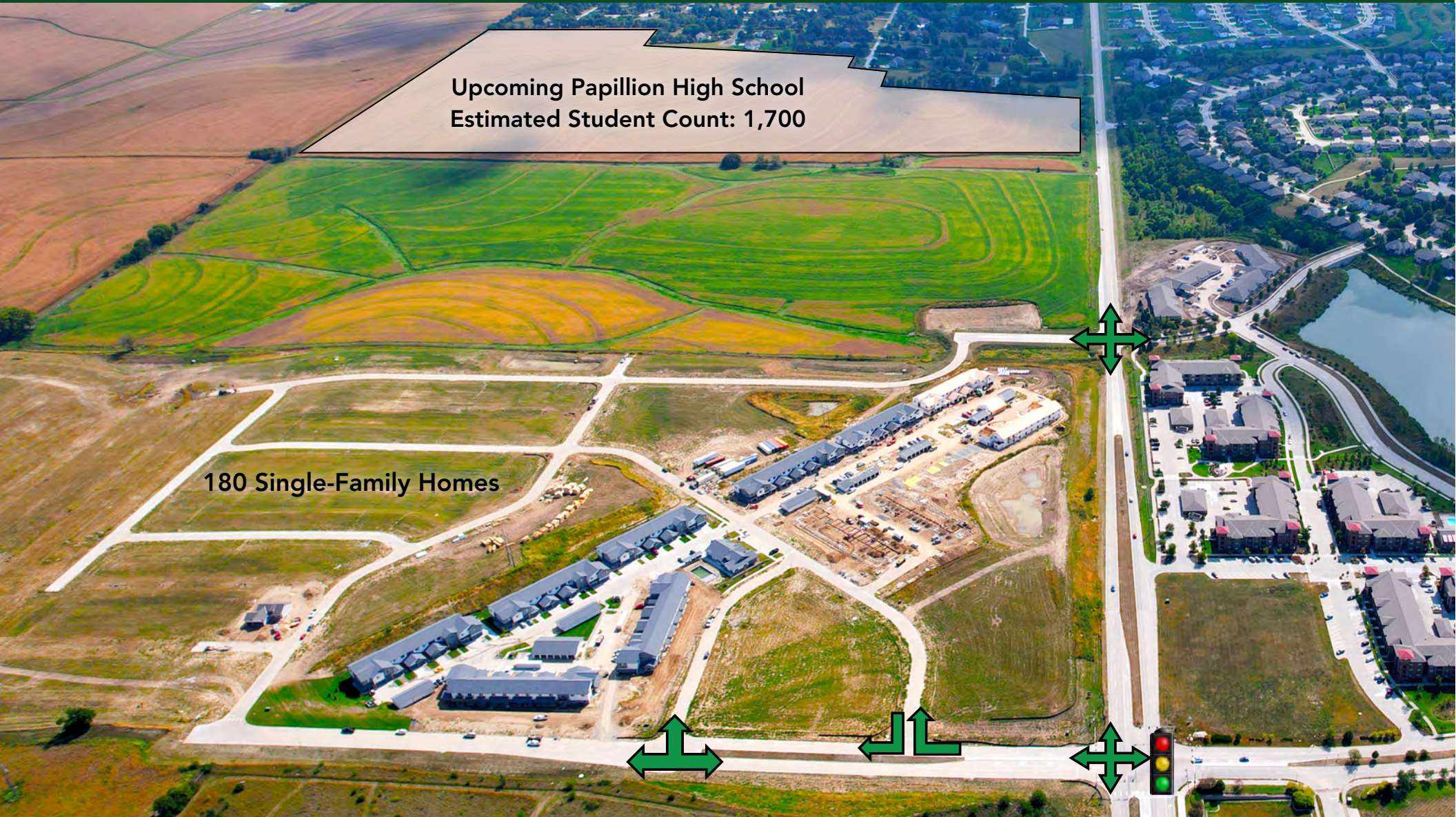
Rocky Pryor
rocky@accesscommercial.com
C: (402) 216 - 7887

WWW.ACCESSCOMMERCIAL.COM



ACCESS Commercial, LLC

4 INTERSECTION DRONES & ACCESS



CONTACT LISTING AGENTS FOR MORE INFORMATION:

Kirk Hanson
kirk@accesscommercial.com
C: (402) 616 - 2580

Rocky Pryor
rocky@accesscommercial.com
C: (402) 216 - 7887

WWW.ACCESSCOMMERCIAL.COM



facebook.com/accesscommercial



instagram.com/accessretail



ACCESS Commercial, LLC



CONTACT LISTING AGENTS FOR MORE INFORMATION:

Kirk Hanson
 kirk@accesscommercial.com
 C: (402) 616 - 2580

Rocky Pryor
 rocky@accesscommercial.com
 C: (402) 216 - 7887

WWW.ACCESSCOMMERCIAL.COM

facebook.com/accesscommercial
 instagram.com/accessretail



ABOUT ACCESS

ACCESS is focused on growth opportunities through a select grouping of strategic partnerships. We strive to maximize value for every stakeholder involved in our projects, and have a proven track record of over 400 successfully completed projects across 40 states. We focus on forming deep relationships with our clients and believe durable success in our industry requires the right mixture of talents and virtues, collaboration, and relentless execution.



KIRK HANSON PRINCIPAL

Kirk is responsible for all business development and brokerage activities for ACCESS and affiliated companies. He holds a Bachelor's Degree in Finance from the University of Nebraska at Lincoln and is a licensed broker in Nebraska, Iowa, Missouri and North Dakota. He is also a long-time member of the International Council of Shopping Centers (ICSC) and the Entrepreneurs Organization (EO).



ROCKY PRYOR BROKERAGE ASSOCIATE

Rocky graduated from the Jesuit school of Rockhurst University with a dual major in Communication and Nonprofit Leadership. He competed in persuasive speech competitions and was named the Vice President of the Nonprofit Leadership Alliance on campus. He is a licensed Real Estate Agent in Nebraska with 4+ years of experience specializing in development/landlord representation.



CONTACT LISTING AGENTS FOR MORE INFORMATION:

Kirk Hanson
kirk@accesscommercial.com
C: (402) 616 - 2580

Rocky Pryor
rocky@accesscommercial.com
C: (402) 216 - 7887

WWW.ACCESSCOMMERCIAL.COM

 facebook.com/accesscommercial

 instagram.com/accessretail