

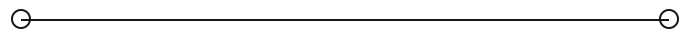


FOR LEASE

315 NW Davis St

315 NW DAVIS ST

Portland, OR 97209



PRESENTED BY:

STACY LOONEY

O: 503.459.4387

stacy.looney@svn.com

OR #940200076

317 NW DAVIS ST - EVENT HALL, CREATIVE OFFICE & MORE!



OFFERING SUMMARY

LEASE RATE:	\$19.00 SF/yr (MG)
BUILDING SIZE:	11,520 SF
AVAILABLE SF:	2,474-7,601 SF
LOT SIZE:	3,000 SF
YEAR BUILT:	1910
ZONING:	CXD
MARKET:	NW Portland
SUBMARKET:	China Town
APN:	R140398

PROPERTY OVERVIEW

Welcome to a unique opportunity in the heart of China Town! Offering up to 7,601ft. in two or more floors each 2500(+/-) in size. The first floor is a meeting event hall equipped with a stage while the 2nd floor offers (3) large offices/classrooms, an open space, and full kitchen. The 3rd floor offers a balcony view of NW with (2) class rooms and large open area for many creative and inspiring uses. Unveil the potential of 315 NW Davis St, with versatile layouts and flexible leasing options, this property offers the ideal canvas for your business vision.

PROPERTY HIGHLIGHTS

- Versatile and adaptable layout options
- Well-maintained property
- Convenient location
- Great accessibility for clients and employees
- Inspiring canvas for realizing your business vision
- Flexible leasing from 1-3 floors
- Restrooms on each floor

STACY LOONEY

O: 503.459.4387
stacy.looney@svn.com
OR #940200076

FIRST, SECOND & THIRD FLOOR - 315 NW DAVIS STREET



First Floor Event Hall with Stage



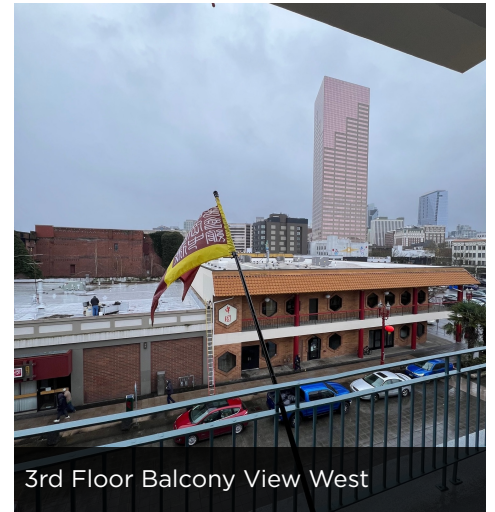
View out front door from Stage



3rd Floor Balcony View East



3rd Floor Balcony View South



3rd Floor Balcony View West



2nd Floor Open Space with Kitchen + 3 office/classroom



3rd Floor - Balcony, Large Open Space (2) Class rooms

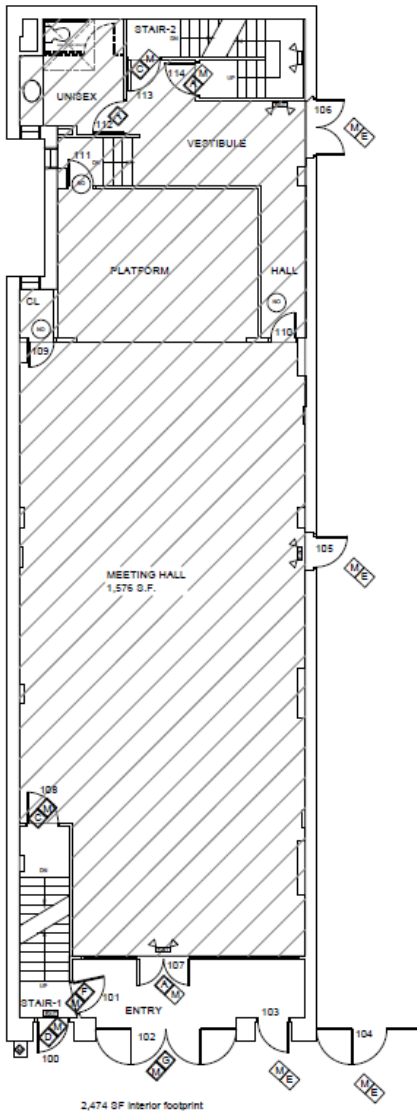
STACY LOONEY

O: 503.459.4387

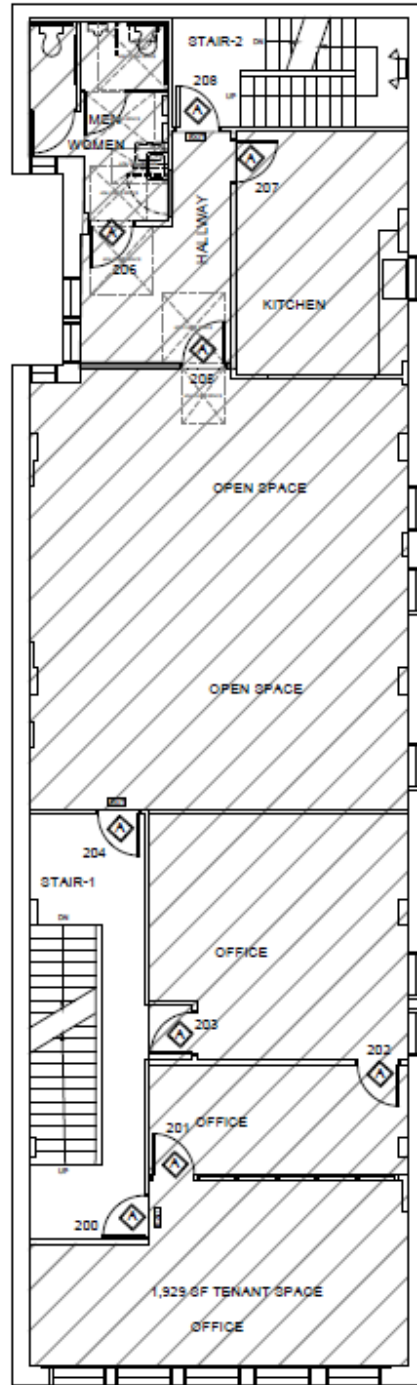
stacy.looney@svn.com

OR #940200076

FLOOR PLANS

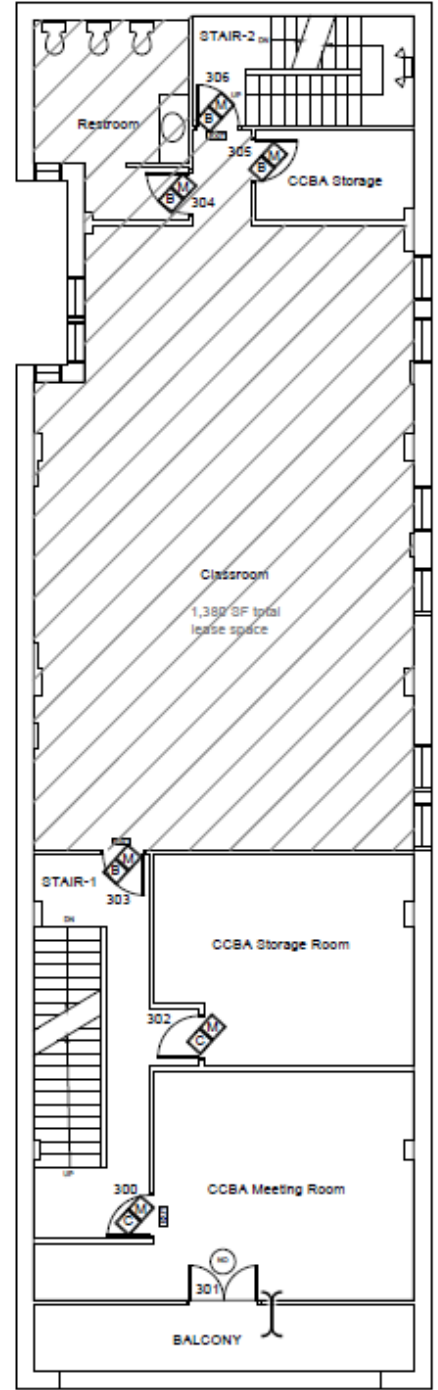


FIRST FLOOR



2,634 SF Interior footprint

SECOND FLOOR



2,493 SF Interior footprint

THIRD FLOOR

First Floor: 2,474 SF

Second Floor: 2,634 SF

Third Floor: 2,493 SF

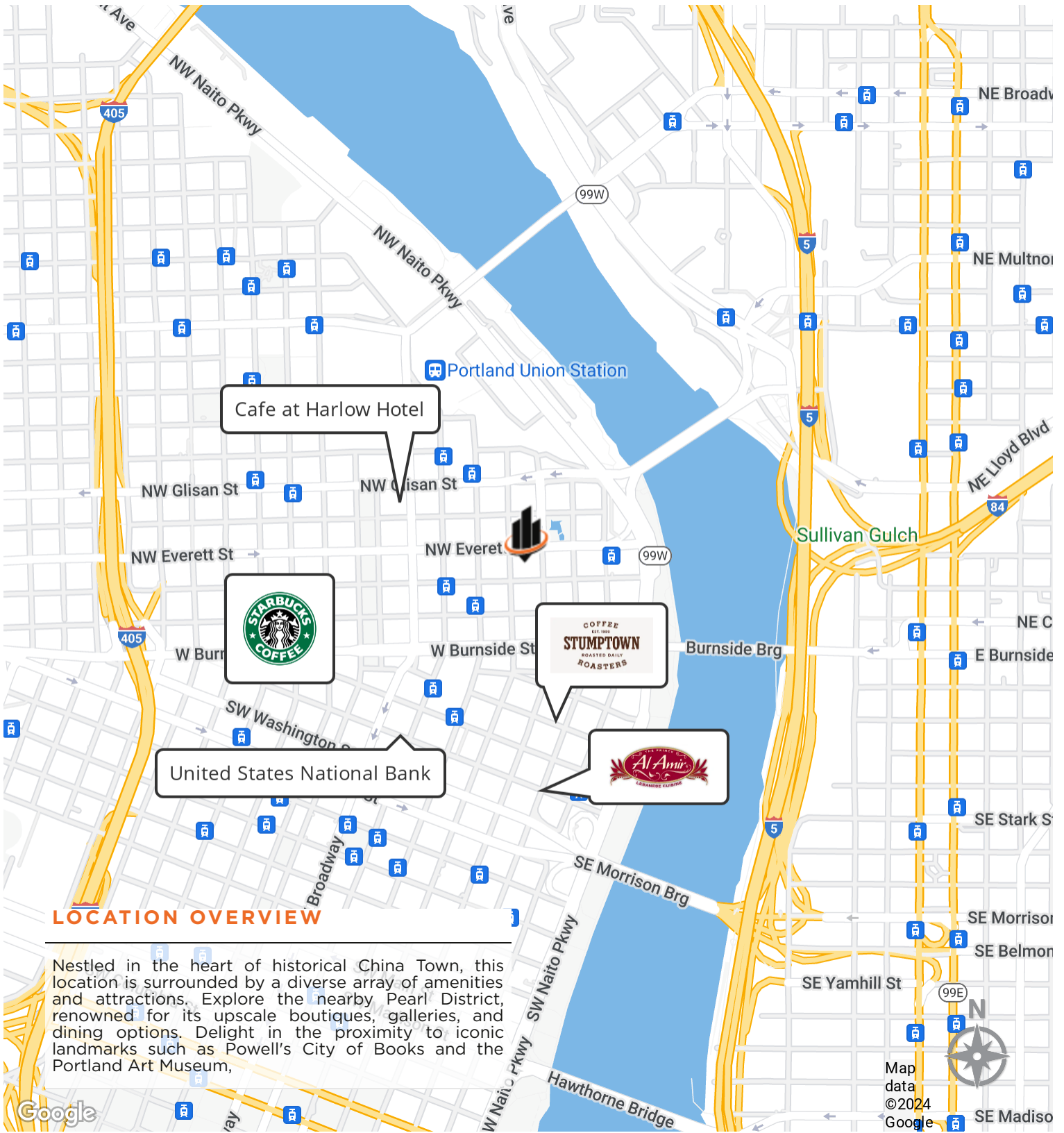
STACY LOONEY

O: 503.459.4387

stacy.looney@svn.com

OR #940200076

LOCATION MAP



LOCATION OVERVIEW

Nestled in the heart of historical China Town, this location is surrounded by a diverse array of amenities and attractions. Explore the nearby Pearl District, renowned for its upscale boutiques, galleries, and dining options. Delight in the proximity to iconic landmarks such as Powell's City of Books and the Portland Art Museum,

STACY LOONEY

O: 503.459.4387

stacy.looney@svn.com

OR #940200076