

FOR LEASE



1036 W Burnside St.

4,600 SF

\$12 SF + Utilities

For additional details contact:

DEBBIE THOMAS

503.720.6335

deb@debbiethomas.com



Debbie Thomas | 503.720.6335 | deb@debbiethomas.com

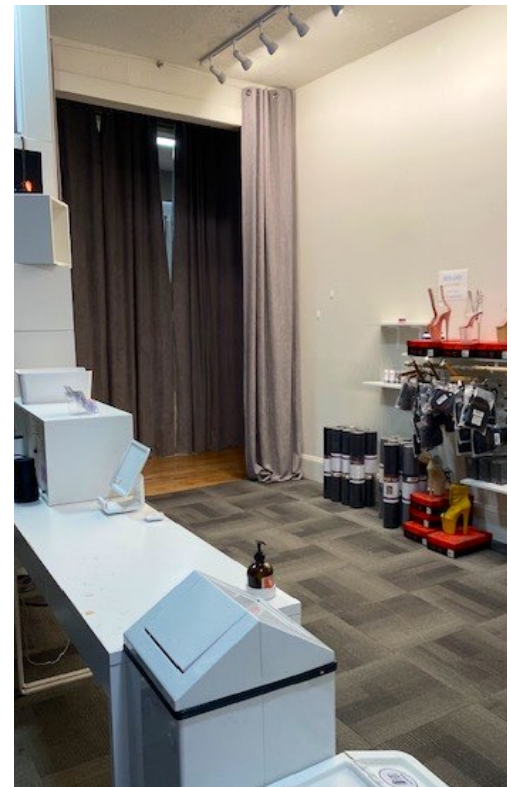
YOUR URBAN REAL ESTATE RESOURCE

THE BUILDING



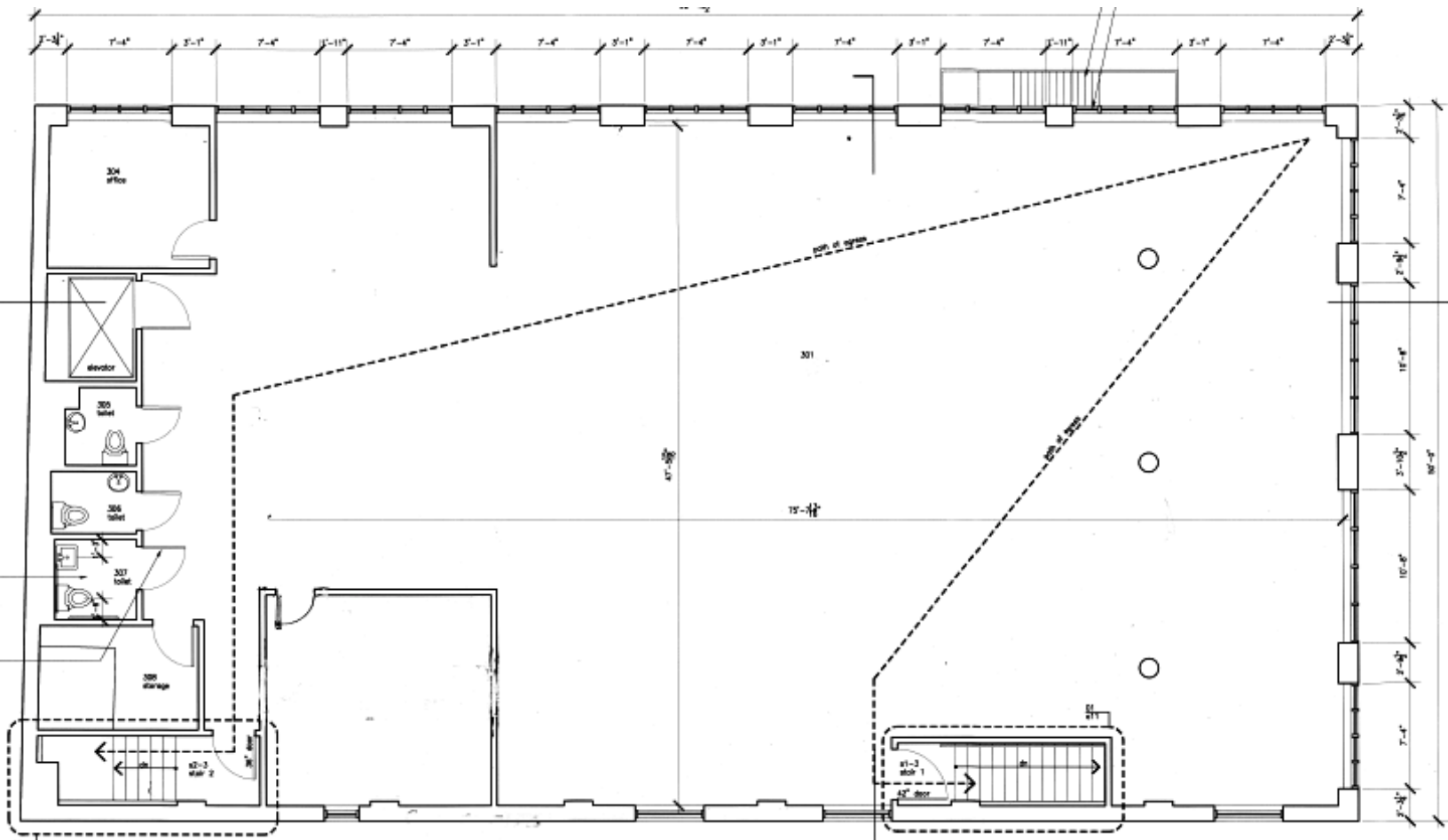
HIGHLIGHTS:

- Open layout
- Original wood floors
- Local ownership
- Common area restrooms
- Office & breakroom
- Kitchenette
- Elevator served
- Operable windows
- Common area bike room
- Dedicated on-site storage



This iconic split-level creative space showcases an expansive window line, providing abundant natural light, and high ceilings. Centrally located in the West End between the vibrant Pearl District and Downtown on W Burnside Street across the street from iconic Powell's Books on the Portland Streetcar line.

THE SPACE



WALKER'S PARADISE

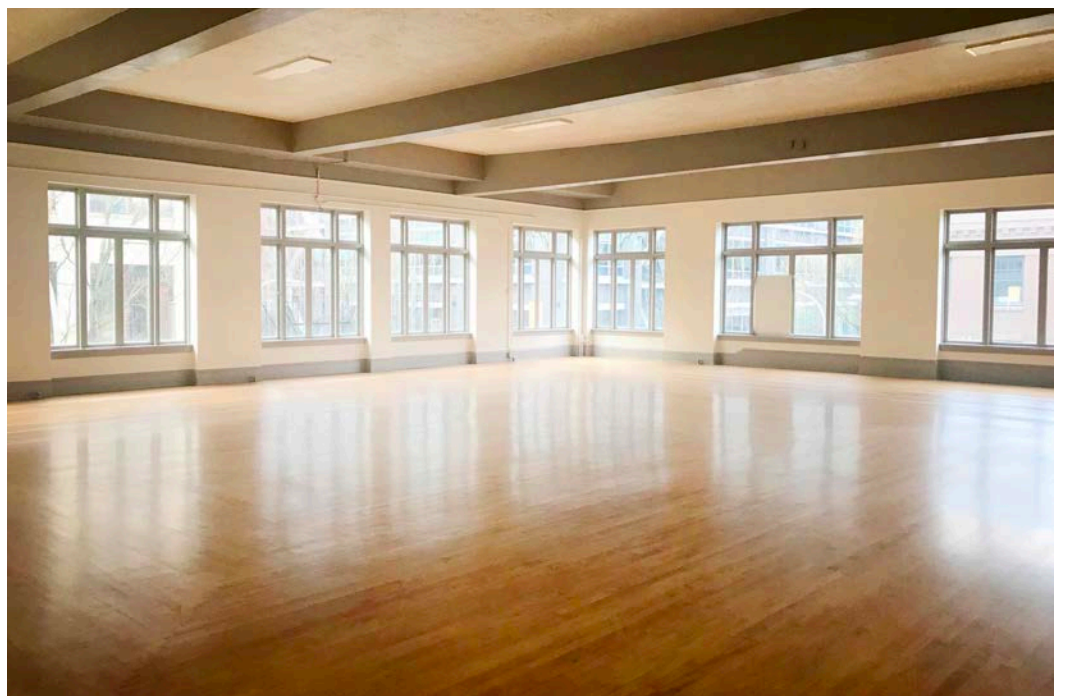
 100

RIDER'S PARADISE

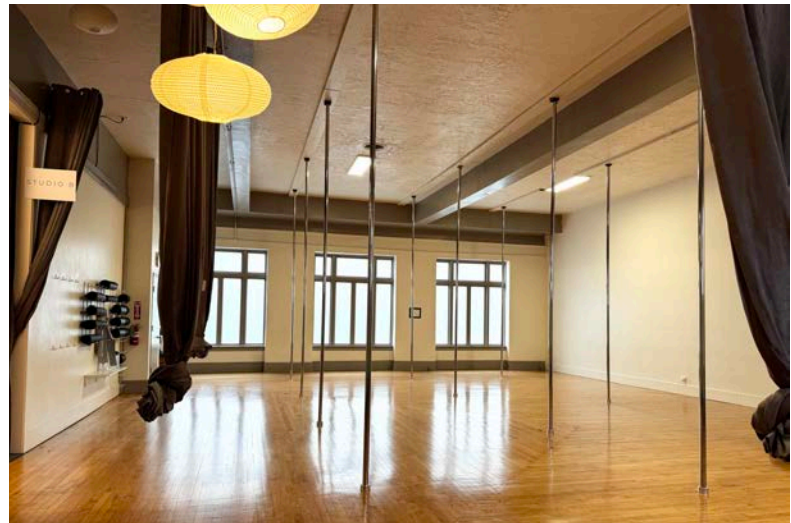
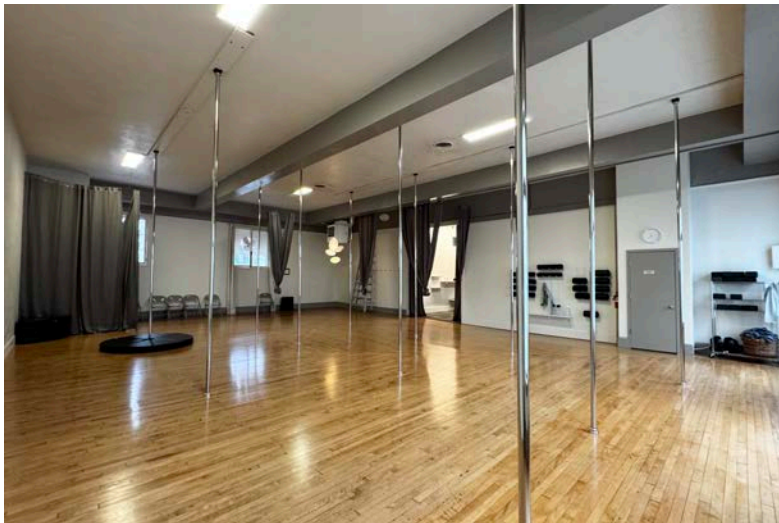
 92

BIKER'S PARADISE

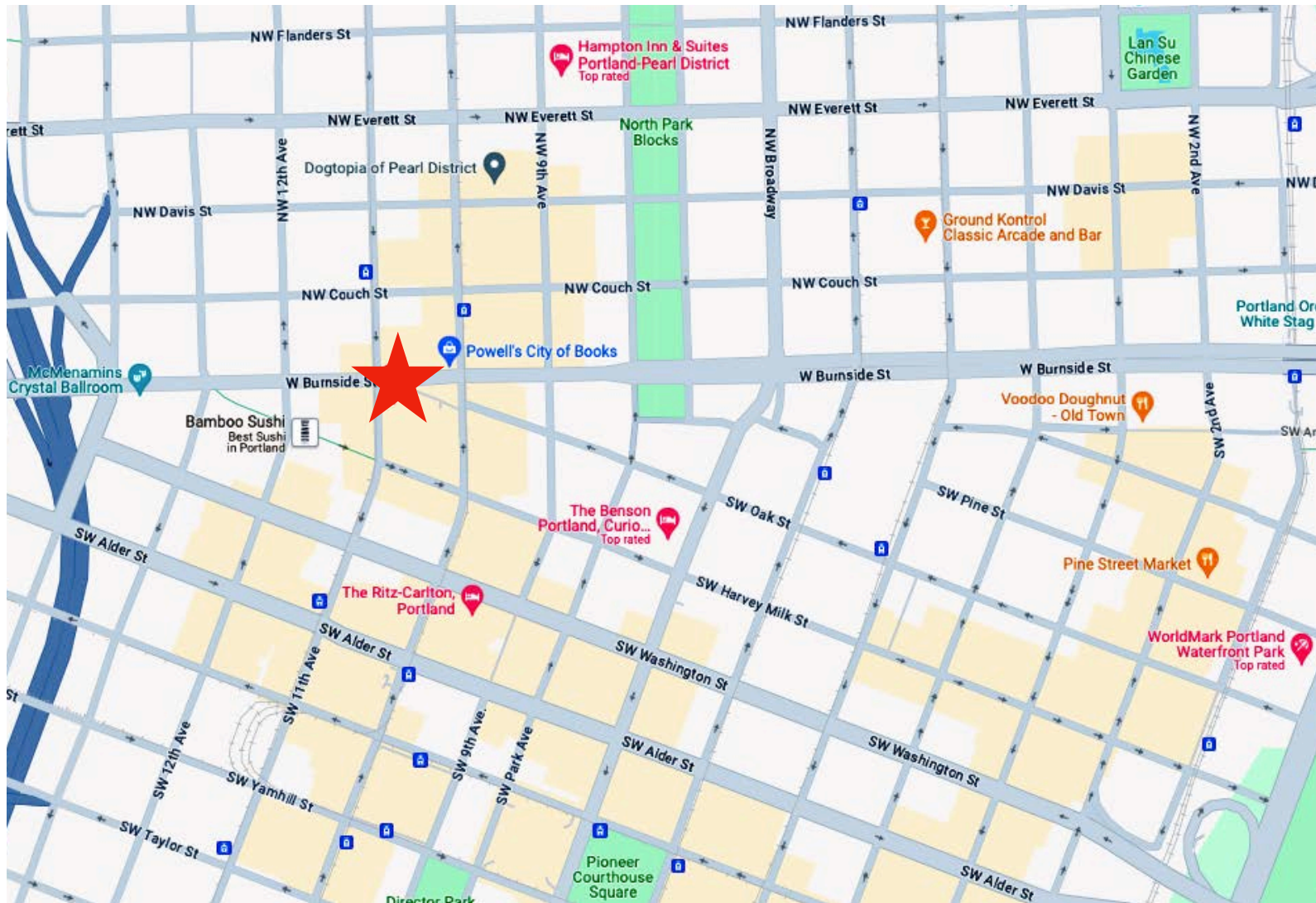
 97



THE SPACE



THE NEIGHBORHOOD



SHOP

Buffalo Exchange
Powell's City of Books
Patagonia
Madewell
Whole Foods
Lululemon
West Elm
CVS
Anthropologie
Free People
Everyday Music
Portland Gear

EAT

Bamboos Sushi
Screen Door
Shake Shack
Cheryl's on 12th
Wailua Shaved Ice
Jake's Famous Crawfish
Canard
Stumptown Coffee Roasters
Multnomah Whiskey Library
Thai Peacock
Bellpine
Sizzle Pie

PLAY

Living Room Theaters
Mcmenamins Crystal Ballroom
North Park Blocks
Ritz Carlton
Roseland Theater
Ground Kontrol
Director Park
Pioneer Courthouse Square
Providence Park
Multnomah Athletic Club
Waterfront Park
Portland Art Museum

The information contained herein has been obtained from sources we deem reliable. We do not guarantee its accuracy. All information should be verified prior to purchase or lease.