



C5 75 LOGISTICS CENTER SOUTH

100 Final Mile Blvd., Unincorporated Boone County, Kentucky, 41094



LEASING AGENT

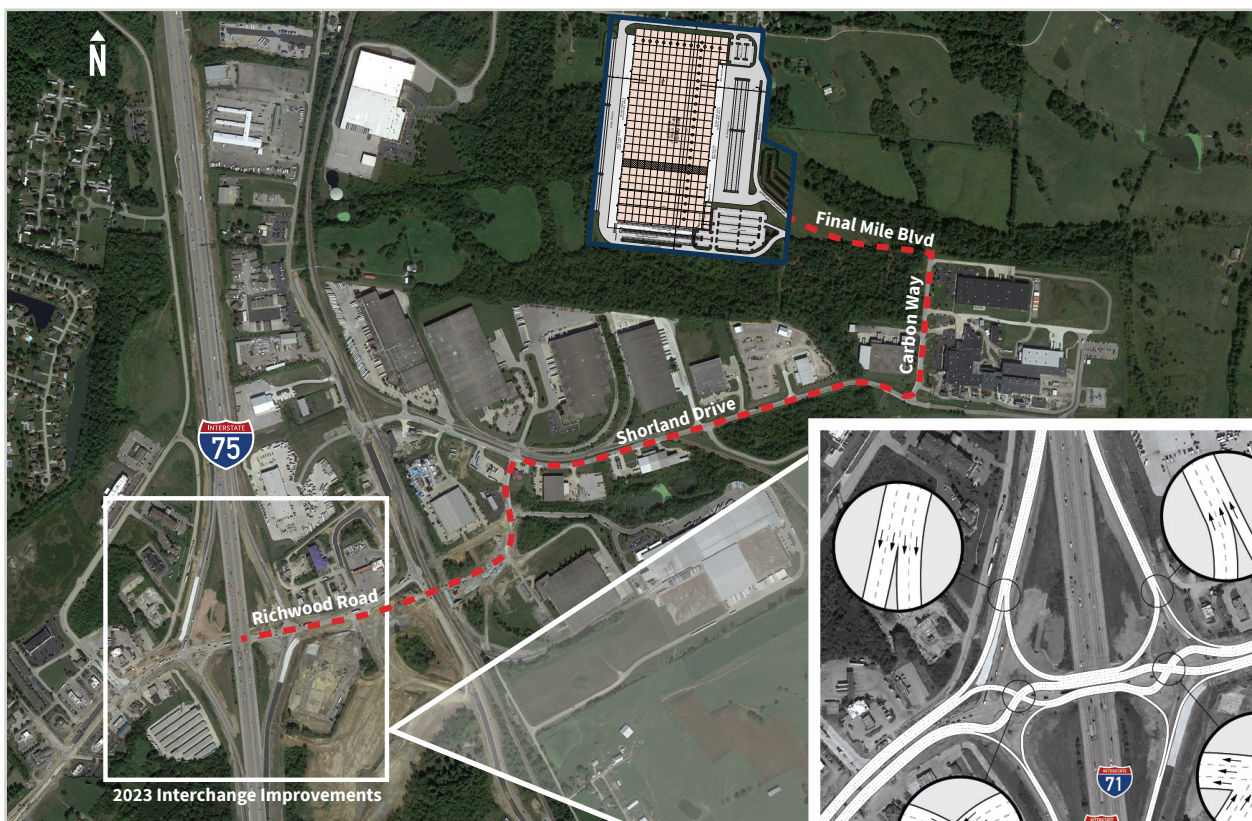


DEVELOPER

C5 75 LOGISTICS CENTER SOUTH

100 Final Mile Blvd., Unincorporated Boone County, Kentucky, 41094

Core5 75 Logistics Center South is located in unincorporated Boone County, Kentucky, just over one mile from I-71/I-75, providing superior access to multiple markets along the I-75 corridor. With close proximity to Cincinnati/Kentucky International Airport and many distribution hubs, the property is ideally situated for business trades requiring local, regional and national distribution. A newly improved Double Crossover Diamond Interchange at the Richwood Interchange, was recently completed, providing direct access to C5 75 Logistics Center South.



**DOUBLE CROSSOVER
DIAMOND INTERCHANGE
CLICK TO LEARN MORE**

Benefits of a Double Crossover Diamond Interchange

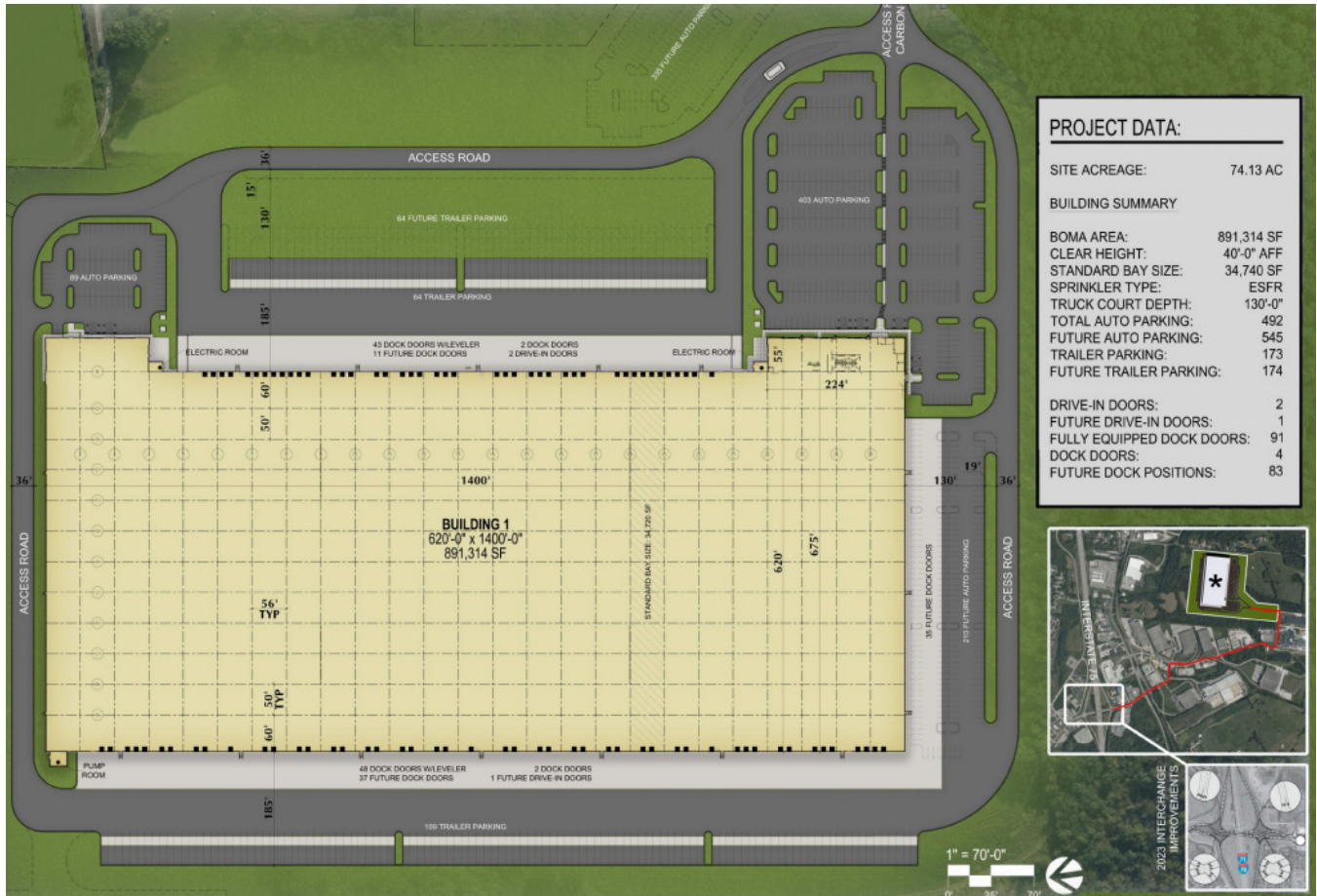
Improved Safety: Reduces the number of points where vehicles may cross paths

Increased Efficiency: Crossovers can operate with only two traffic signal phases, which allows the interchange to handle a greater volume of traffic and operate with less delay

Easier Access to Freeway: Design allows traffic to enter and exit the freeway without crossing opposing lanes of traffic

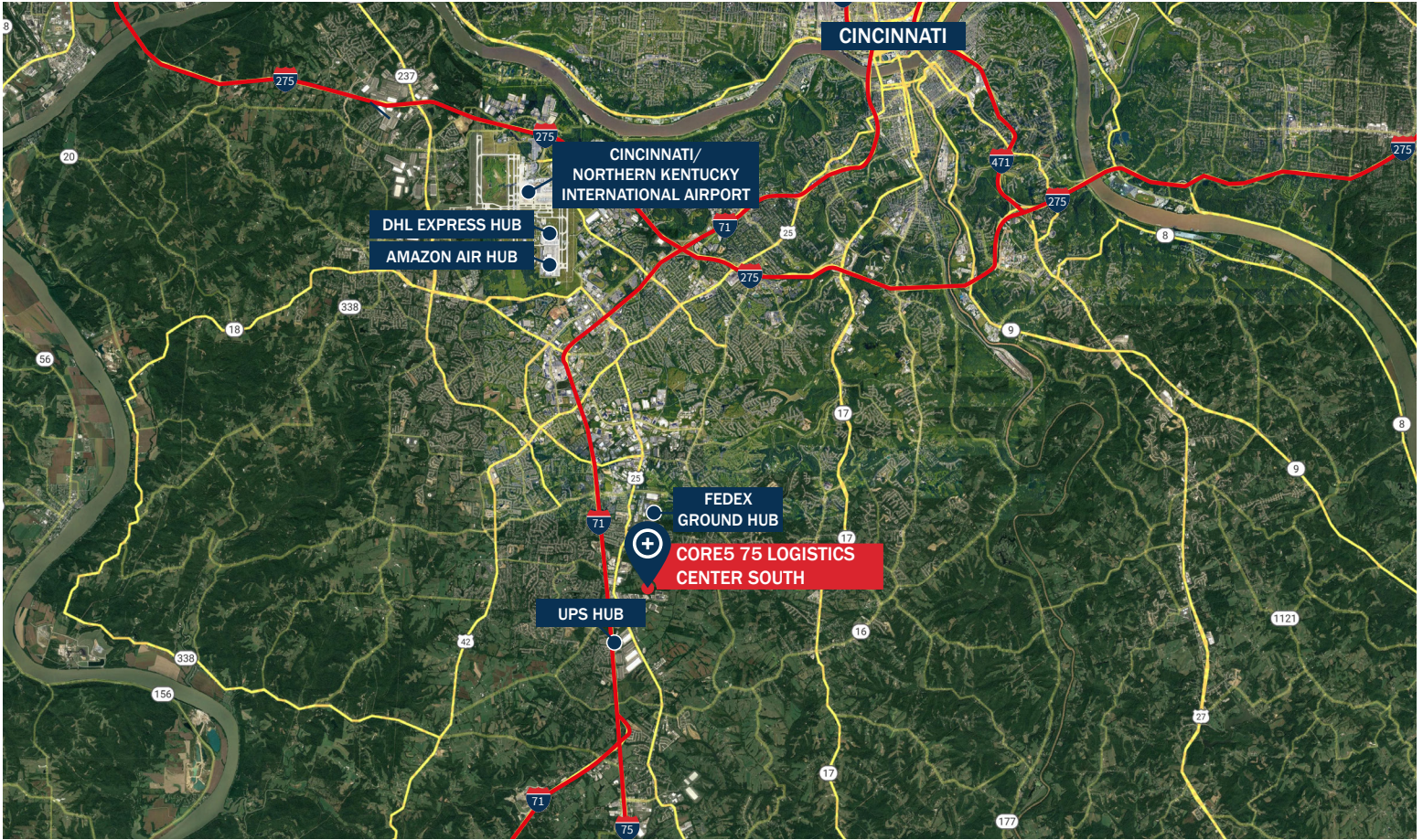
Source: www.virginiaodot.org/innovativeintersections

SITE PLAN



BUILDING SPECIFICATIONS

Square Footage	891,314 SF (1400' x 620' plus 2 office bump outs)
Site Area	74.13 acres
Configuration	Crossdock
Column Spacing	56' wide x 50' deep
Clear Height	40' clear minimum
Dock High Doors	91 – 9' x 10' fully equipped dock doors (83 future dock positions)
Drive-In Doors	2 – 14' x 16' drive-in doors (1 future drive-in doors)
Truck Court Depth	130'
Auto Parking	492 auto spaces (545 future auto spaces)
Trailer Storage	173 trailer storage locations (174 future trailer parking spaces)
Electrical	277/480 volt, 3 phase, 6,000 amps
Sprinkler	ESFR sprinkler system



MILES TO:

LOUISVILLE	85 miles
COLUMBUS	125 miles
INDIANAPOLIS	130 miles
NASHVILLE	255 miles
CHICAGO	315 miles
ATLANTA	450 miles
HARRISBURG	490 miles
KANSAS CITY	590 miles



Doug Armbruster
 Senior Vice President and Managing Director
 O 859.287.3707
 C 513.235.3933
 darmbruster@c5ip.com



Mark G. Volkman, SIOR
 Senior Managing Director
 O 513.241.4600
 C 513.226.2076
 mark.volkman@jll.com

Brian M. Leonard
 Executive Managing Director
 O 513.241.4600
 C 513.257.5653
 brian.leonard@jll.com