

38,415 SF AVAILABLE  
SHORT-TERM PLUG & PLAY  
SPACE AVAILABLE

# 612 Howard

SPECTACULAR CREATIVE FLOORS  
HISTORIC CHARM  
PROXIMITY TO EVERYTHING  
LOCAL OWNERSHIP

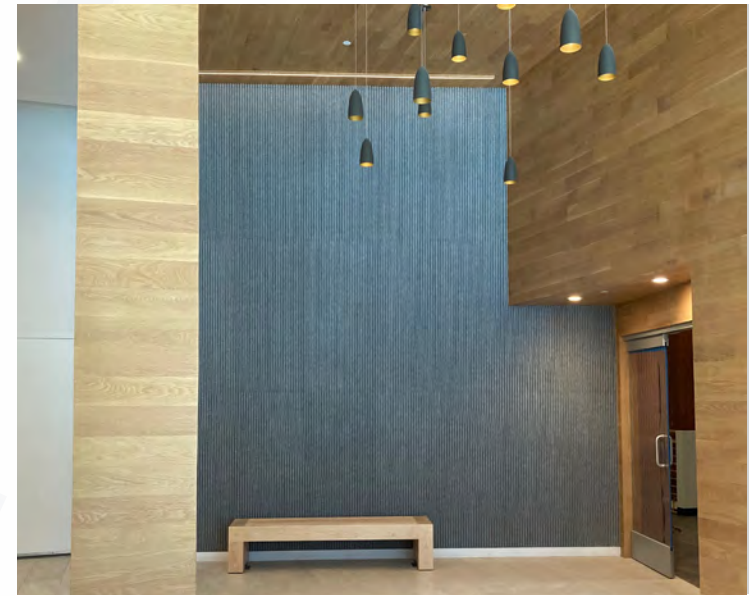
Charlie Withers  
Executive Managing Director  
T 415.445.5191  
charlie.withers@nmrk.com  
CA RE License #01414522

**NEWMARK**



# 612 Howard

FLOORS AVAILABLE

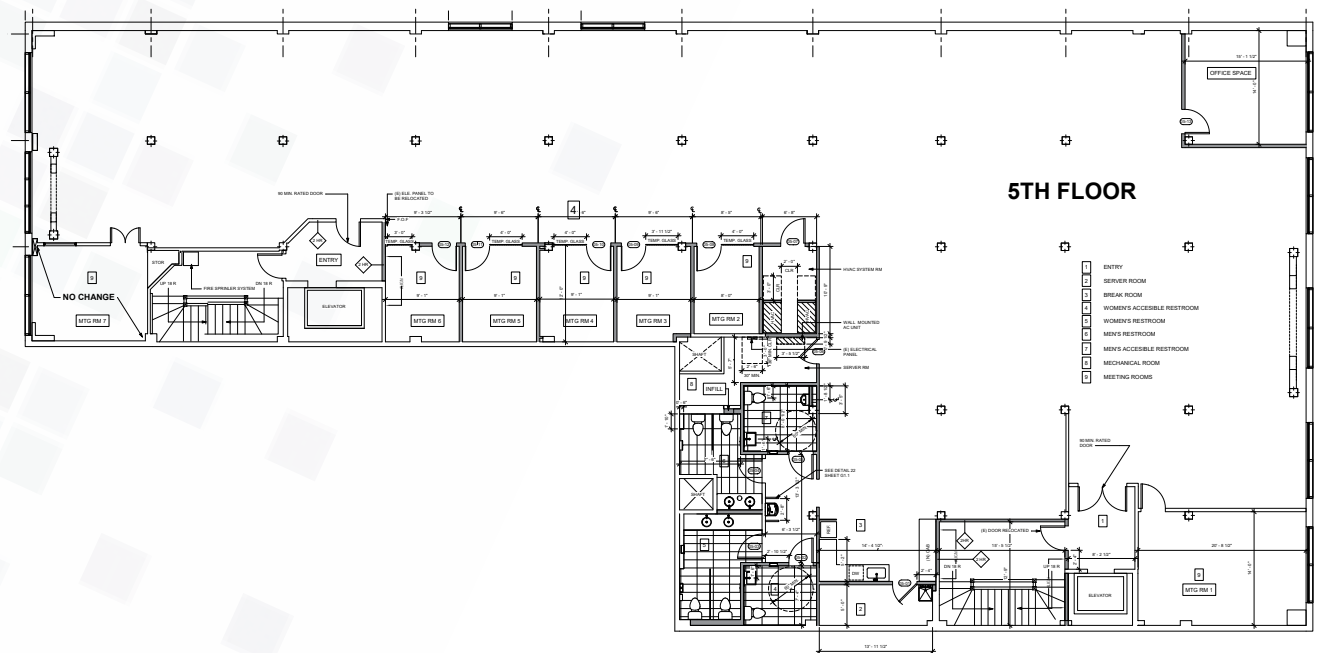


FLOOR/SUITE	SQUARE FEET	DATE AVAILABLE	TERM	COMMENTS
5TH	9,729	Now	1-10 Years	Furnished, plug and play space.
4TH	9,678	Now	1-10 Years	Furnished, plug and play space.
3RD	9,689	Now	1-10 Years	Furnished, plug and play space.
2ND	9,319	Now	1-10 Years	High-end creative finishes. Large kitchen.
GROUND	18,268	<b>LEASED</b>		

# 612 Howard

## 5TH FLOOR DETAILS

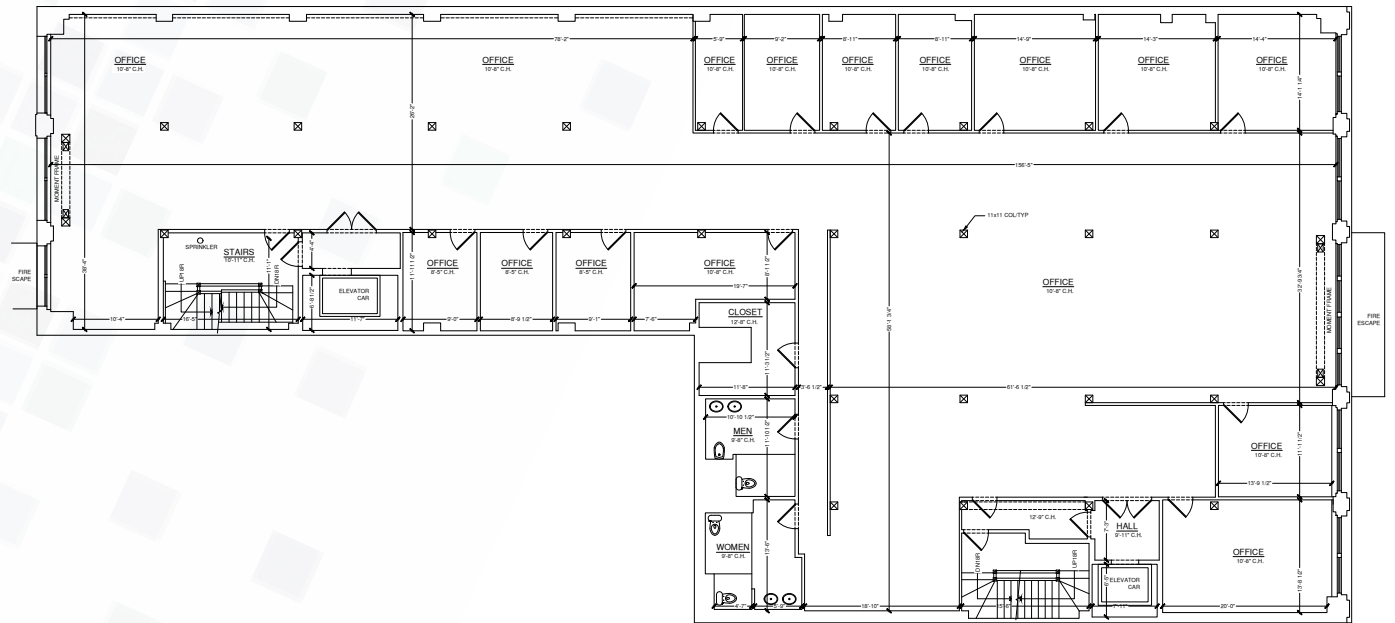
- 9,729 SF
- Available Now
- 1-10 Years
- Plug & Play
- Furnished



# 612 Howard

## 4TH FLOOR DETAILS

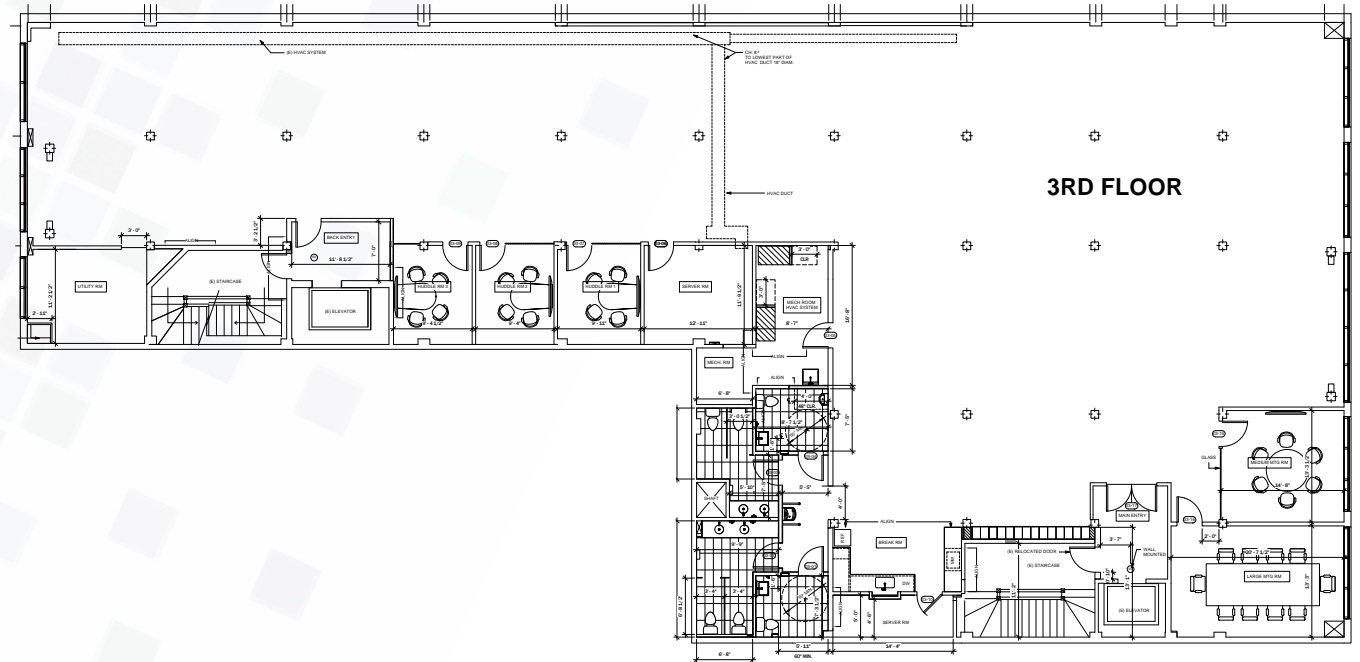
- 9,678 SF
- Available Now
- 1-10 Years
- Plug & Play
- Furnished



# 612 Howard

## 3RD FLOOR DETAILS

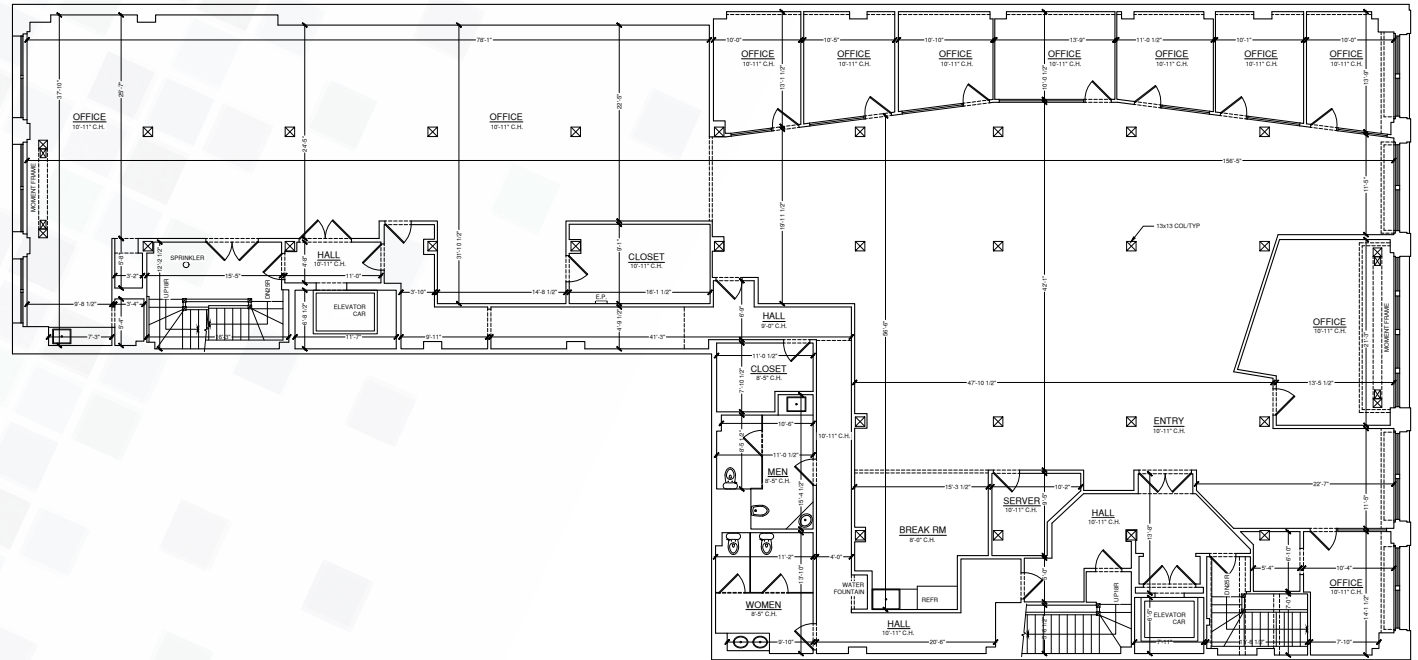
- 9,689 SF
- Available Now
- 1-10 Years
- Plug & Play
- Furnished



# 612 Howard

## 2ND FLOOR DETAILS

- 9,319 SF
- Available Now
- 1-10 Years
- High-end Creative Finishes
- Large Kitchen



# 612 Howard

## INTERIOR PHOTOS



# 612 Howard

## NEW LOBBY



**ONE SANSOME STREET, FLOOR 4100 SAN FRANCISCO, CA 94104**

The distributor of this communication is performing acts for which a real estate license is required. The information contained herein has been obtained from sources deemed reliable but has not been verified and no guarantee, warranty or representation, either express or implied, is made with respect to such information. Terms of sale or lease and availability are subject to change or withdrawal without notice.

Charlie Withers  
Executive Managing Director  
T 415.445.5191  
charlie.withers@nmrk.com  
CA RE License #01414522

**NEWMARK**