


FOR SUBLEASE

100,000 SF AVAILABLE

Key Features

- 8 dock-high doors / 1 drive-in door
- ±1,500 sf main office
- Trailer parking
- 20' eave height; 28' at center
- Sprinklered
- Available for sublease through May 21, 2028

Location Highlights

- 2 miles to GA Ports Authority Garden City Terminal
- Excellent access to Highway 21 and Jimmy Deloach Parkway

Sublease Rate: \$7.50 PSF Gross



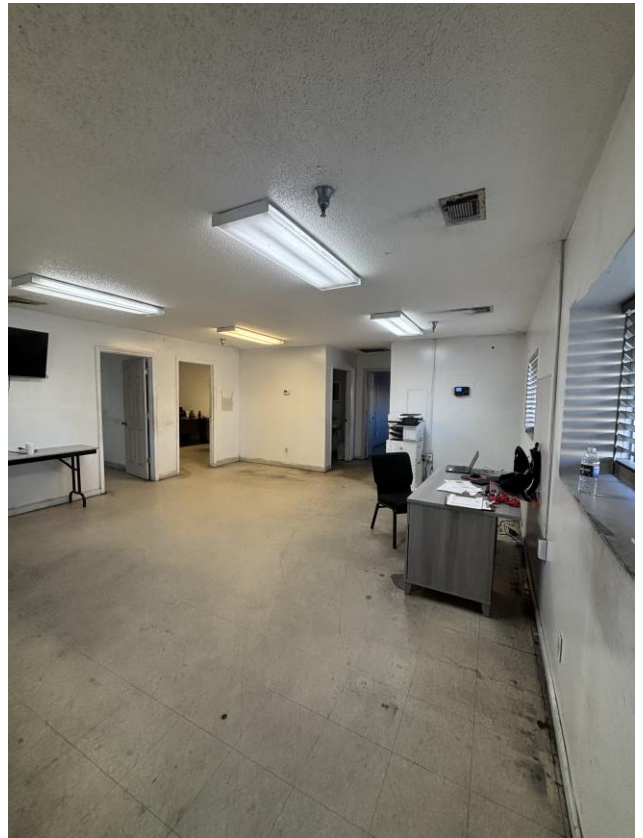
**Stephen Ezelle, SIOR
Partner**

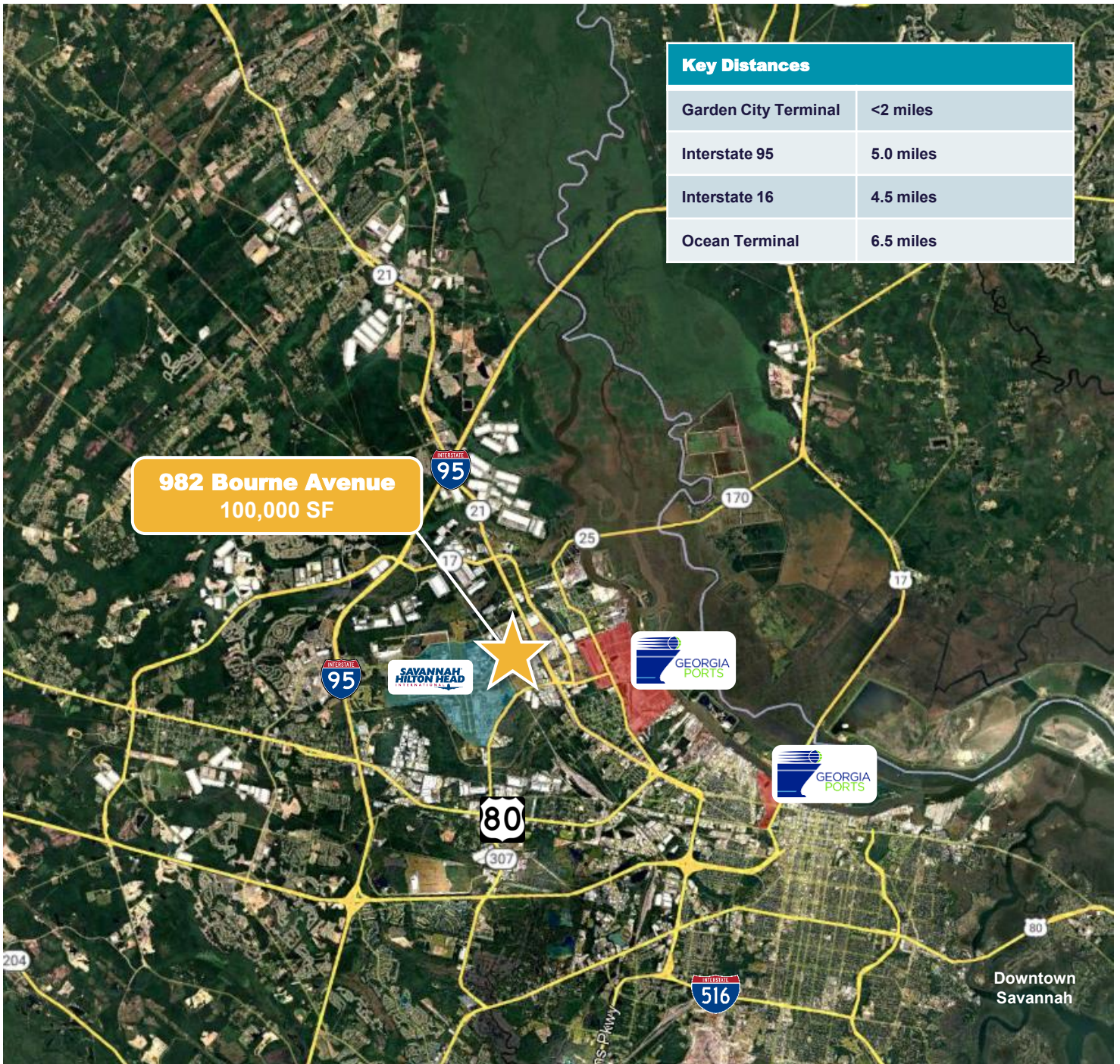
+1 912 441 3083
sezelle@gilbertezelle.com

**820 Abercorn Street
Savannah, GA 31401**

+1 912 236 8992
gilbertezelle.com

cushmanwakefield.com





Key Distances	
Garden City Terminal	<2 miles
Interstate 95	5.0 miles
Interstate 16	4.5 miles
Ocean Terminal	6.5 miles

FOR MORE INFORMATION

Stephen Ezelle, SIOR
Partner
+1 912 441 3083
sezelle@gilbertezelle.com

820 Abercorn Street
Savannah, GA 31401
+1 912 236 8992

gilbertezelle.com