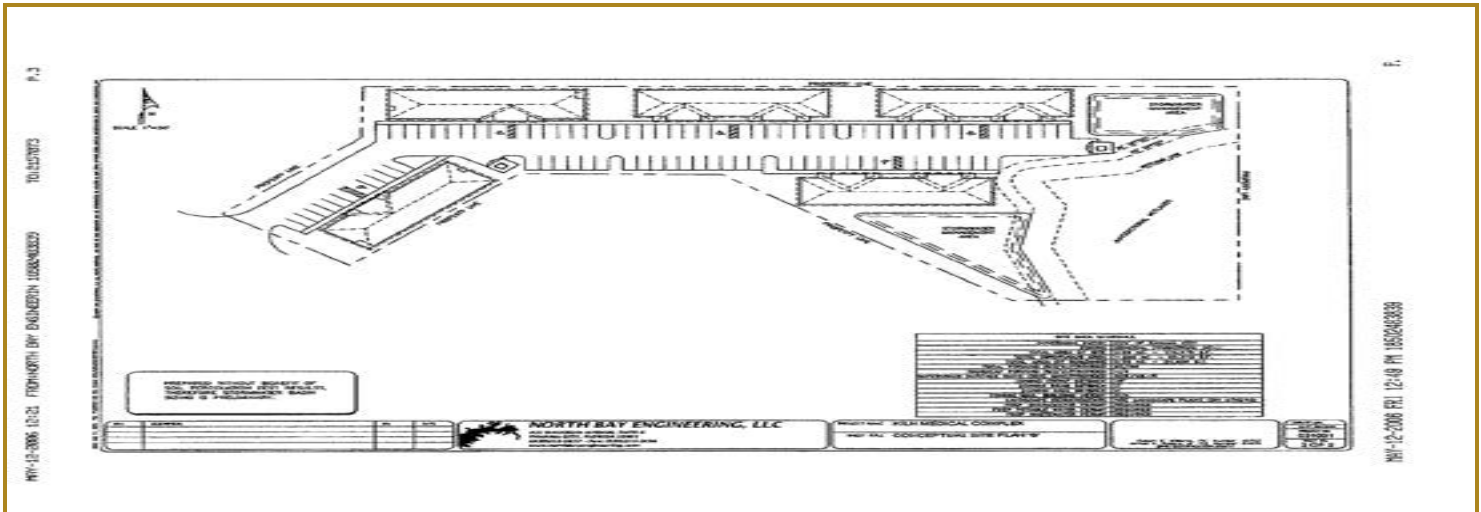




CONFIDENTIAL OFFERING MEMORANDUM



	1 Mile	3 Miles	5 Miles
Total Households:	2,499	16,899	34,660
Total Population:	5,781	40,219	83,653
Average HH Income:	\$53,915	\$54,605	\$60,203

Airport Road Medical Office Park

Airport Road, Panama City, FL 32405

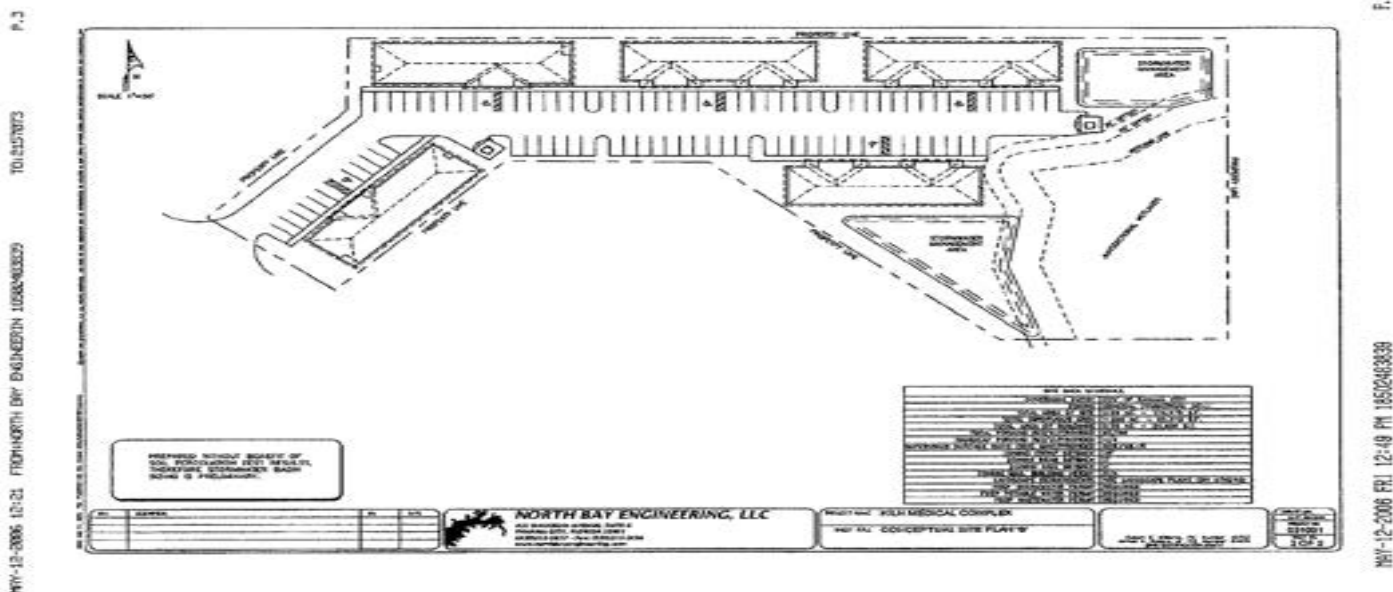
NEIL C. JONES, SIOR

Broker
850.258.8971
njones@rrcre.com





LAND PROPERTY FOR SALE



OFFERING SUMMARY

Sale Price: \$625,000

PROPERTY OVERVIEW

Property designed and permitting for multi building Office Park for sale on Airport Road across from Northwest Florida Surgery Center
Zoned General Commercial . Office, Storage, Multifamily Mixed Use Residential

LOCATION OVERVIEW

The subject property is located on Airport Road, southeast 23rd street and Northwest of 19th Street, approximately 1 mile from Gulf Coast Medical Center in Bay County, Florida.

Lot Size: 2.88 Acres

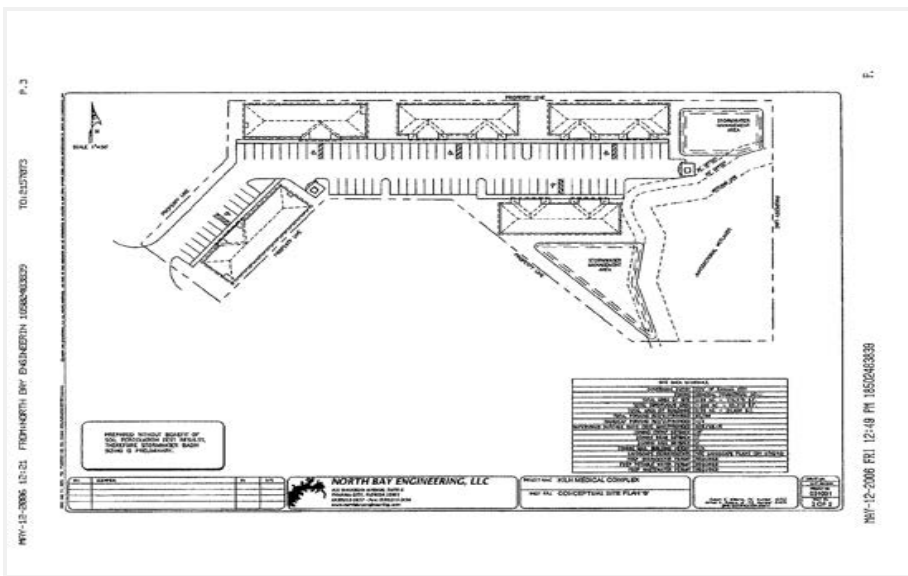
RESOURCE REALTY GROUP
2101 Northside Drive, Suite 104
Panama City, FL 32405
O: 850.630.4500

NEIL C. JONES, SIOR
Broker
850.258.8971
njones@rrcre.com

Information contained herein has been obtained from the owner of the property or other sources that we deem reliable. We have no reason to doubt its accuracy, but we do not guarantee it.



LAND PROPERTY FOR SALE



RESOURCE REALTY GROUP
 2101 Northside Drive, Suite 104
 Panama City, FL 32405
 O: 850.630.4500

NEIL C. JONES, SIOR
 Broker
 850.258.8971
 njones@rrcre.com

Information contained herein has been obtained from the owner of the property or other sources that we deem reliable. We have no reason to doubt its accuracy, but we do not guarantee it.



LAND PROPERTY FOR SALE

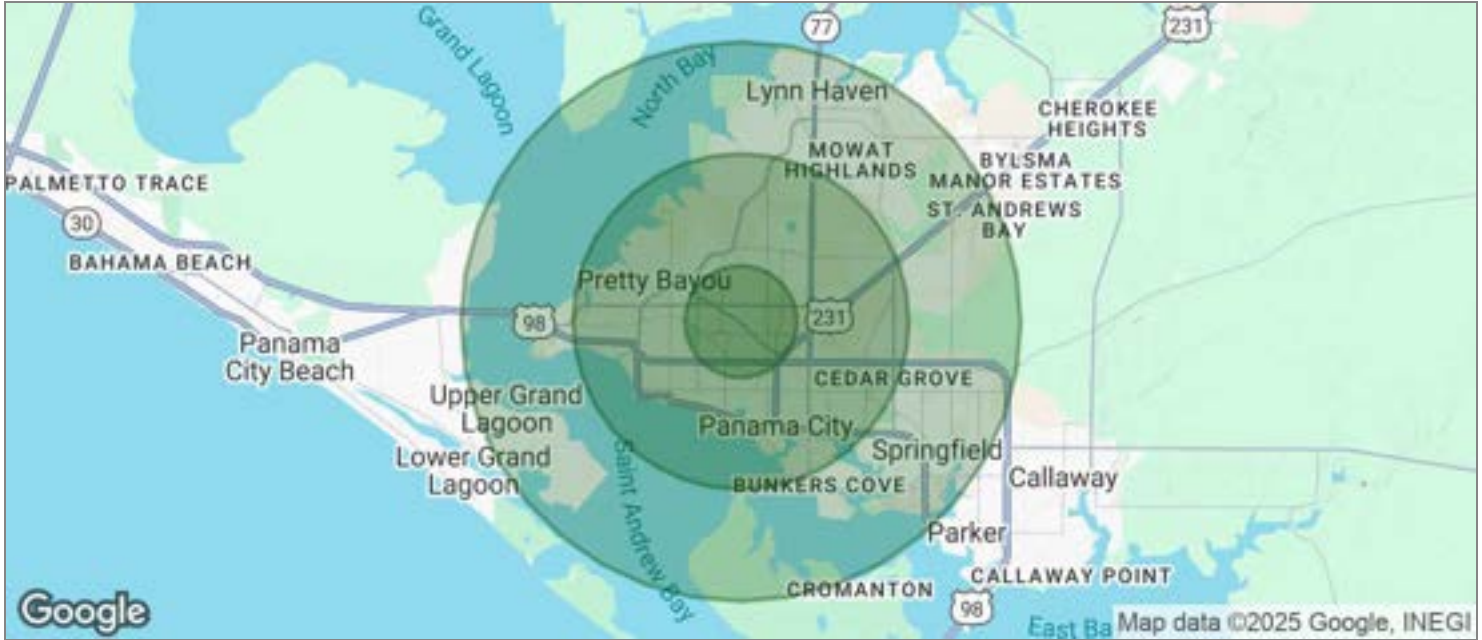


RESOURCE REALTY GROUP
2101 Northside Drive, Suite 104
Panama City, FL 32405
O: 850.630.4500

NEIL C. JONES, SIOR
Broker
850.258.8971
njones@rrcre.com



LAND PROPERTY FOR SALE



POPULATION	1 MILE	3 MILES	5 MILES
TOTAL POPULATION	5,781	40,219	83,653
MEDIAN AGE	41.5	38.3	38.4
MEDIAN AGE (MALE)	40.5	37.8	37.8
MEDIAN AGE (FEMALE)	44.5	40.2	39.7
HOUSEHOLDS & INCOME	1 MILE	3 MILES	5 MILES
TOTAL HOUSEHOLDS	2,499	16,899	34,660
# OF PERSONS PER HH	2.3	2.4	2.4
AVERAGE HH INCOME	\$53,915	\$54,605	\$60,203
AVERAGE HOUSE VALUE	\$221,829	\$196,418	\$198,830

* Demographic data derived from 2020 ACS - US Census