



CREEK|CRE

RETAIL SPACE FOR LEASE

# 1740 S SOONER

Oklahoma City, OK 73115



AJ TOLBERT  
630.843.1989  
aj@creekcre.com

ADEN STRUBLE  
405.210.3910  
aden@creekcre.com

600 NE 4TH STREET, SUITE 100 | OKLAHOMA CITY, OK 73104-6231 | 405.510.0079 | CREEKCRE.COM

JUNE 18, 2026

## EXECUTIVE SUMMARY



### OFFERING SUMMARY

Lease Rate:	\$21 SF/yr (NNN)
Building Size:	6,980 SF
Available SF:	1,439 SF
Year Built:	2024

### PROPERTY OVERVIEW

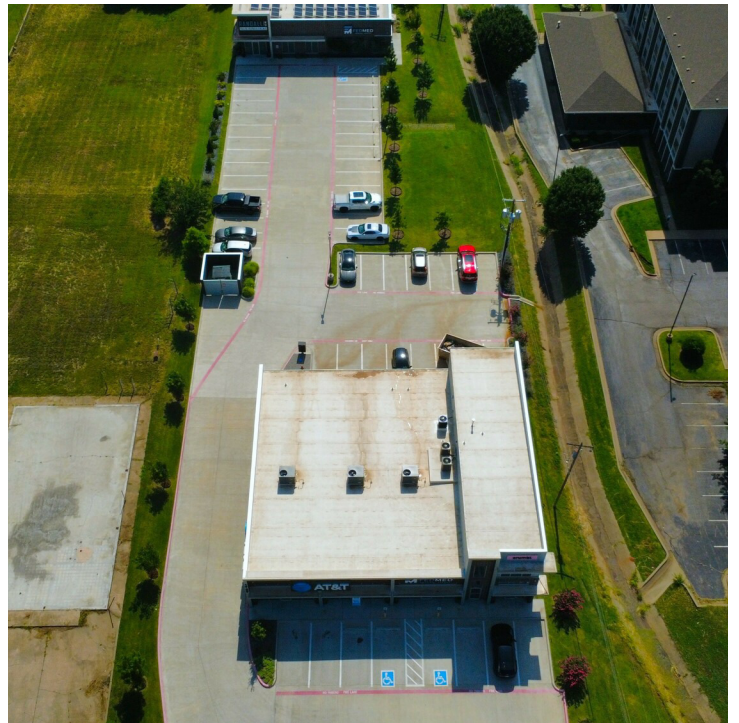
Now leasing: brand-new professional office/retail space built in 2024, ideally located on Sooner Rd just north of I-40. This high-visibility property offers modern design, ample parking, and convenient access—perfect for medical, legal, or other professional services. Positioned in a growing corridor with strong traffic counts and excellent exposure. Ready for your business!

SPACES	LEASE RATE	SPACE SIZE
Suite B	\$21.00 SF/yr	1,439 SF

AJ TOLBERT  
630.843.1989  
aj@creekcre.com

ADEN STRUBLE  
405.210.3910  
aden@creekcre.com

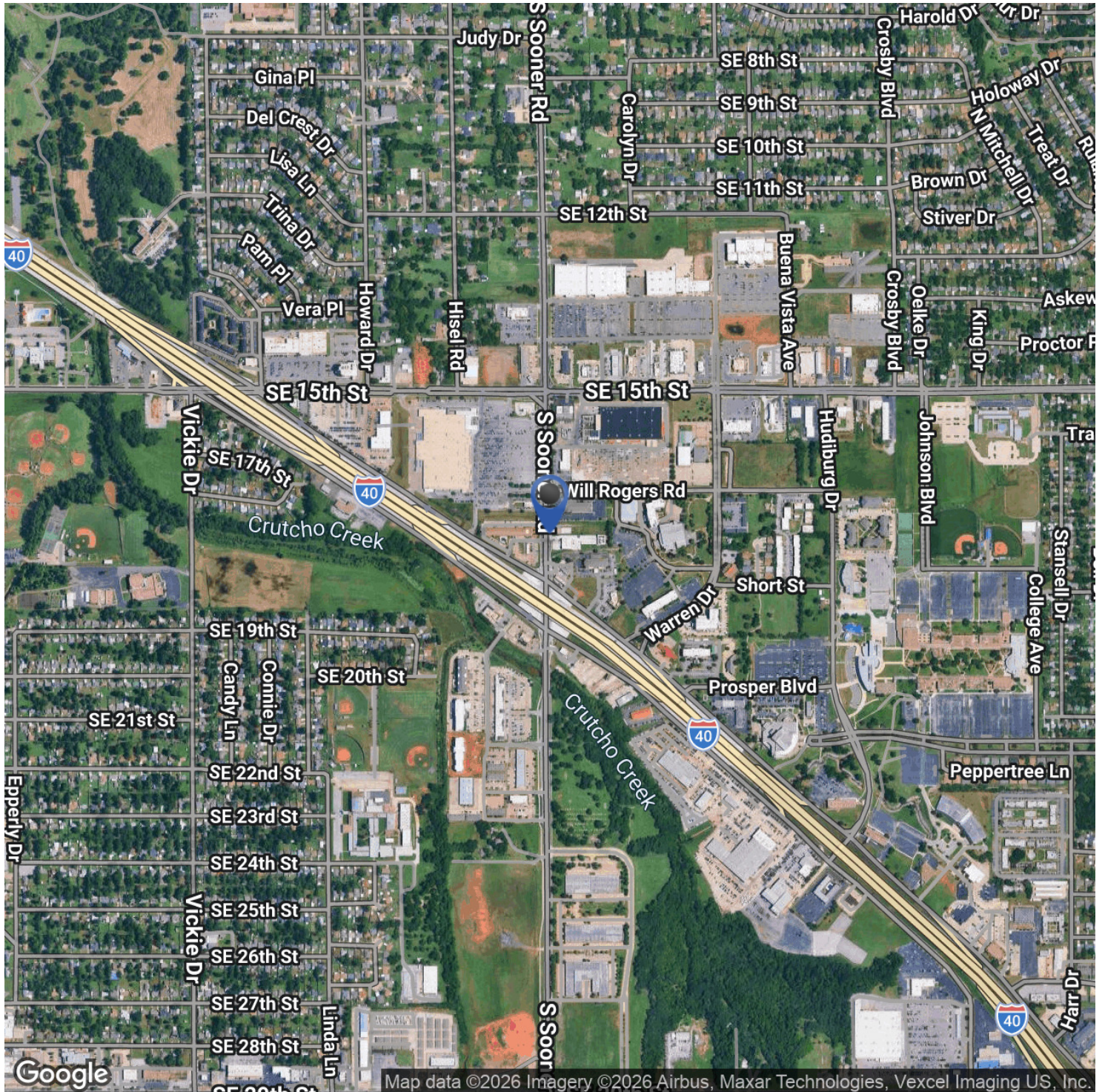
## ADDITIONAL PHOTOS



**AJ TOLBERT**  
630.843.1989  
aj@creekcre.com

**ADEN STRUBLE**  
405.210.3910  
aden@creekcre.com

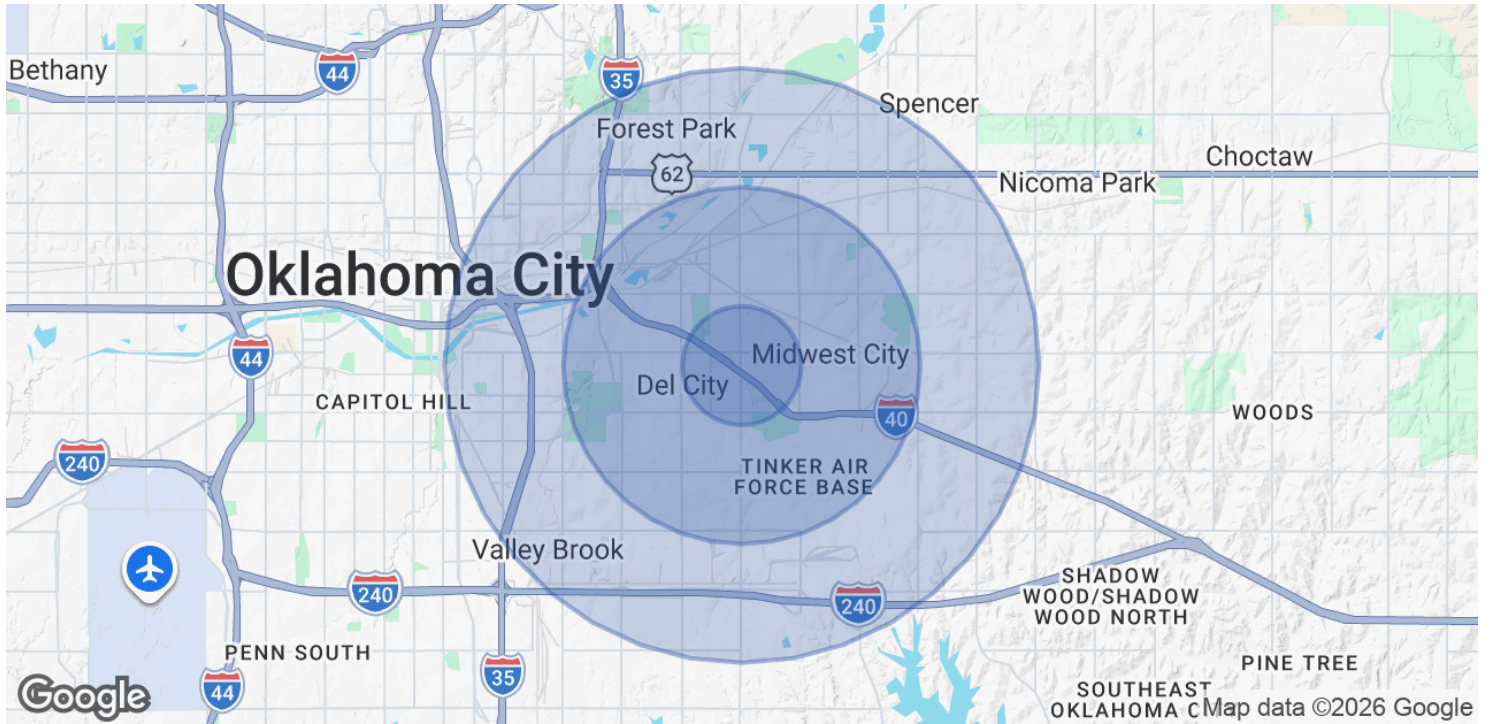
## LOCATION MAP



**AJ TOLBERT**  
630.843.1989  
aj@creekcre.com

**ADEN STRUBLE**  
405.210.3910  
aden@creekcre.com

## DEMOGRAPHICS MAP & REPORT



POPULATION	1 MILE	3 MILES	5 MILES
Total Population	8,450	64,769	130,066
Average Age	39	38	38
Average Age (Male)	38	36	37
Average Age (Female)	41	39	39

HOUSEHOLDS & INCOME	1 MILE	3 MILES	5 MILES
Total Households	3,559	26,287	52,781
# of Persons per HH	2.4	2.5	2.5
Average HH Income	\$53,178	\$62,849	\$66,541
Average House Value	\$129,037	\$152,491	\$177,348

2020 American Community Survey (ACS)

**AJ TOLBERT**  
 630.843.1989  
 aj@creekcre.com

**ADEN STRUBLE**  
 405.210.3910  
 aden@creekcre.com