

601 S FAIRFAX AVENUE

NEWLY CONSTRUCTED RETAIL SPACE ON FAIRFAX AVE ACROSS FROM LACMA



JARED SWEDELSON

Vice President
d: 818-742-1632
m: 818-644-7597
jswedelson@naicapital.com
Cal DRE Lic #02105146

NAI CAPITAL - WEST LOS ANGELES

11835 W. Olympic Blvd., Suite 700E
Los Angeles, CA 90064
d: 310-806-6100
f: 310-806-6101
www.naicapital.com

Property Details



Available Spaces

Unit 1:	3,428 SF	\$4.25/SF NNN
Unit 2:	2,164 SF	\$3.95/SF NNN
Unit 3:	2,305 SF	\$3.95/SF NNN
Unit 4:	3,261 SF	\$3.95/SF NNN
Unit 5:	2,000 SF	\$4.25/SF NNN

Total: ±2,000-13,000 SF

**Spaces adjacent can be continuous*

Space Features

- New floor to ceiling glass store fronts
- Bow truss ceilings with skylights
- 12 ft high ceilings
- Ample onsite parking
- Dedicated roll up doors

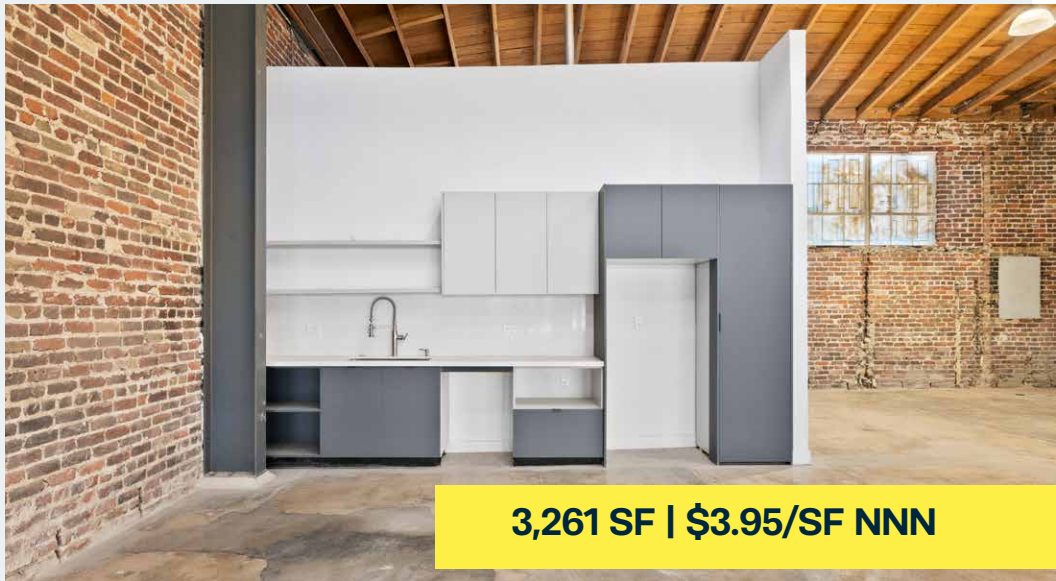
Parking: 23 Spaces



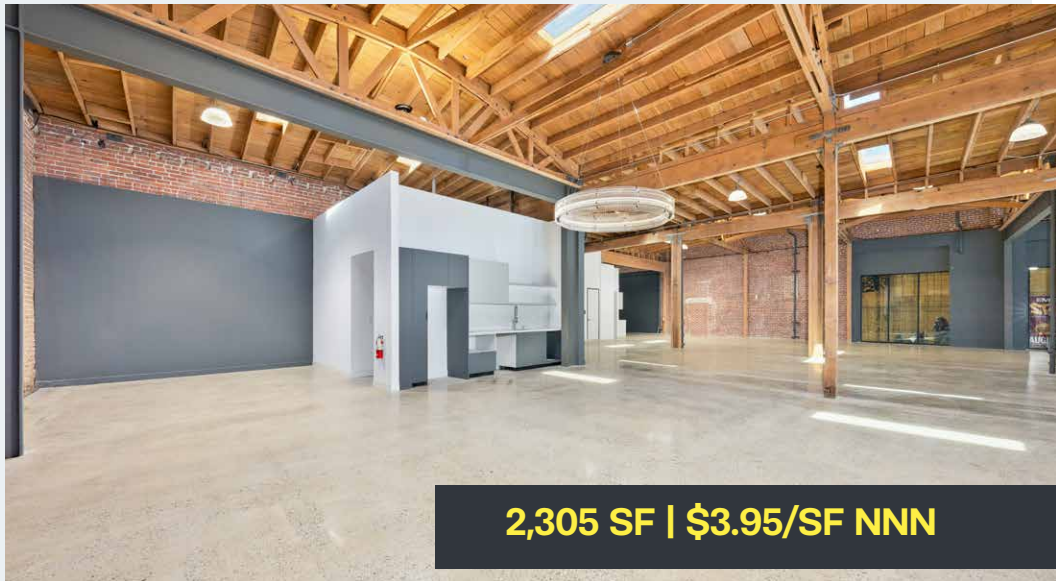
Property Photos



Unit 4 Photos

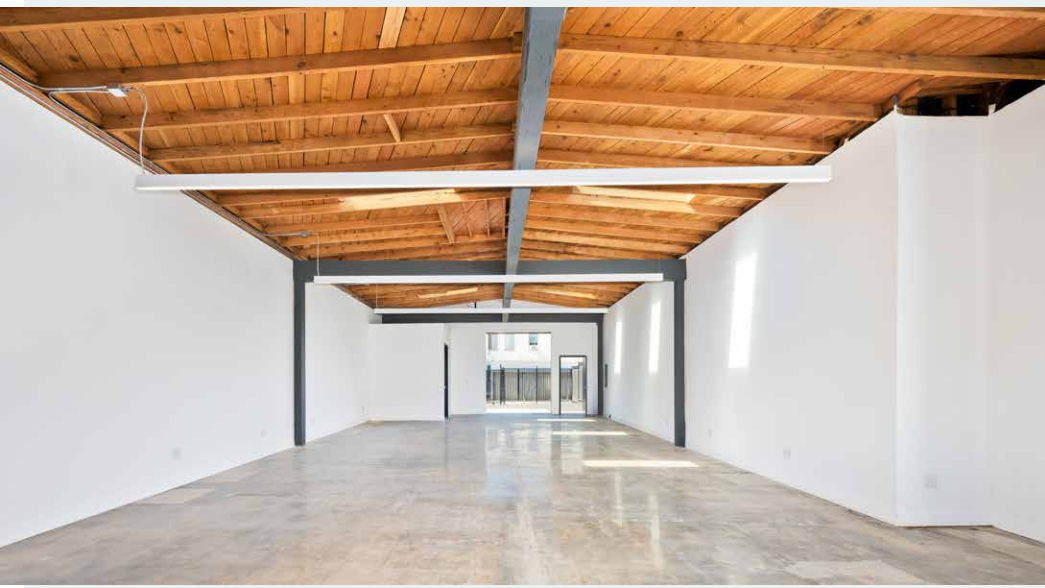
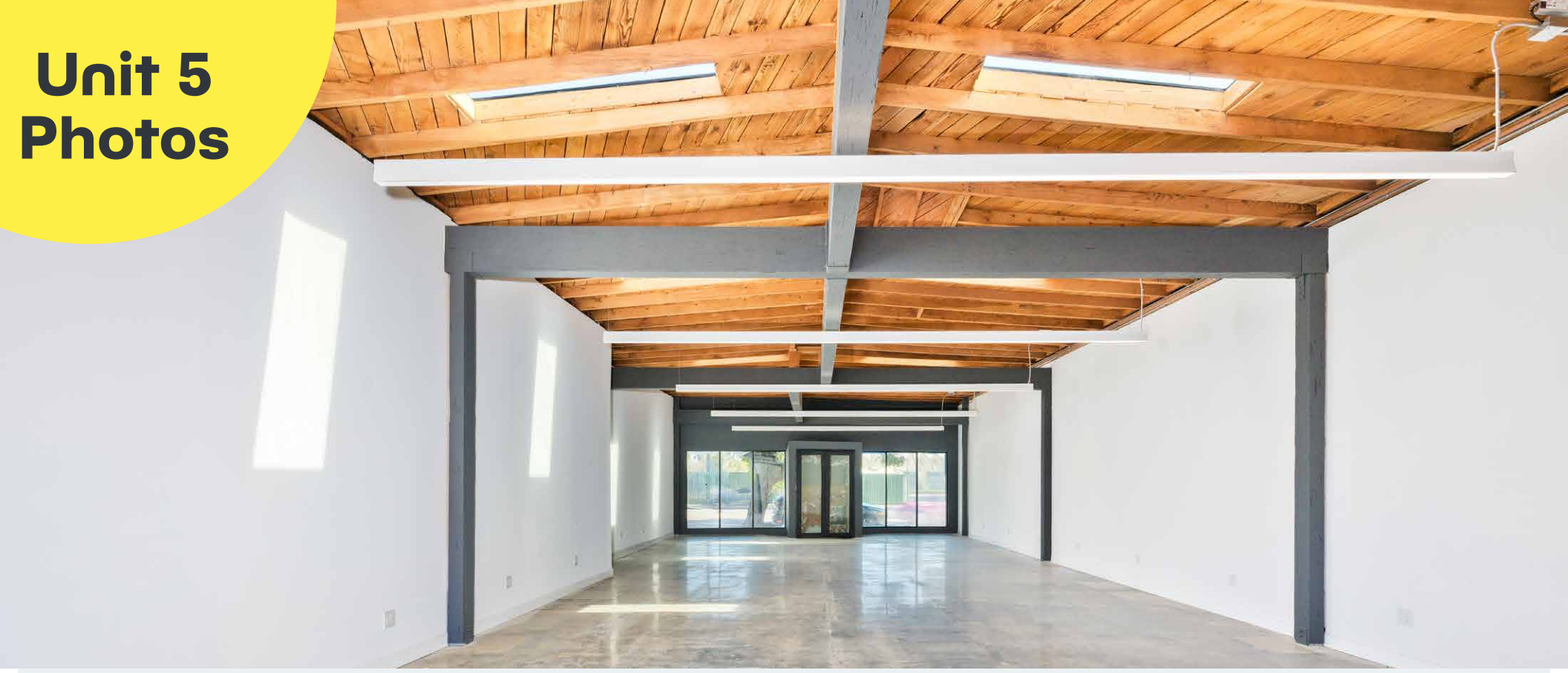


Unit 3 Photos

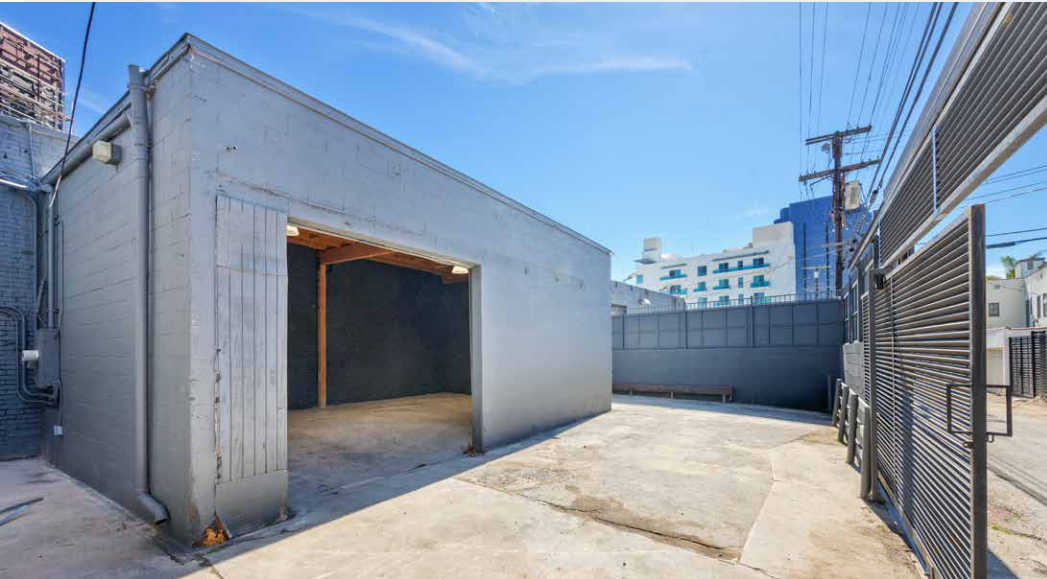


2,305 SF | \$3.95/SF NNN

Unit 5 Photos

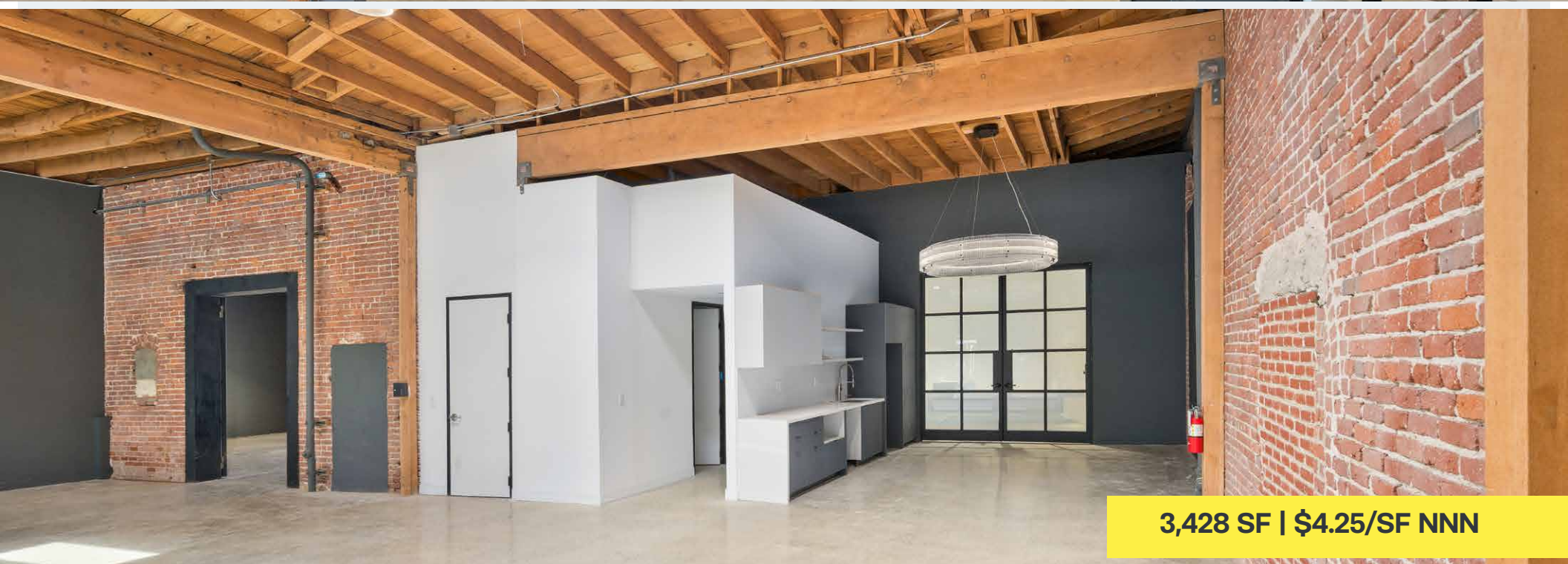


Unit 2 Photos



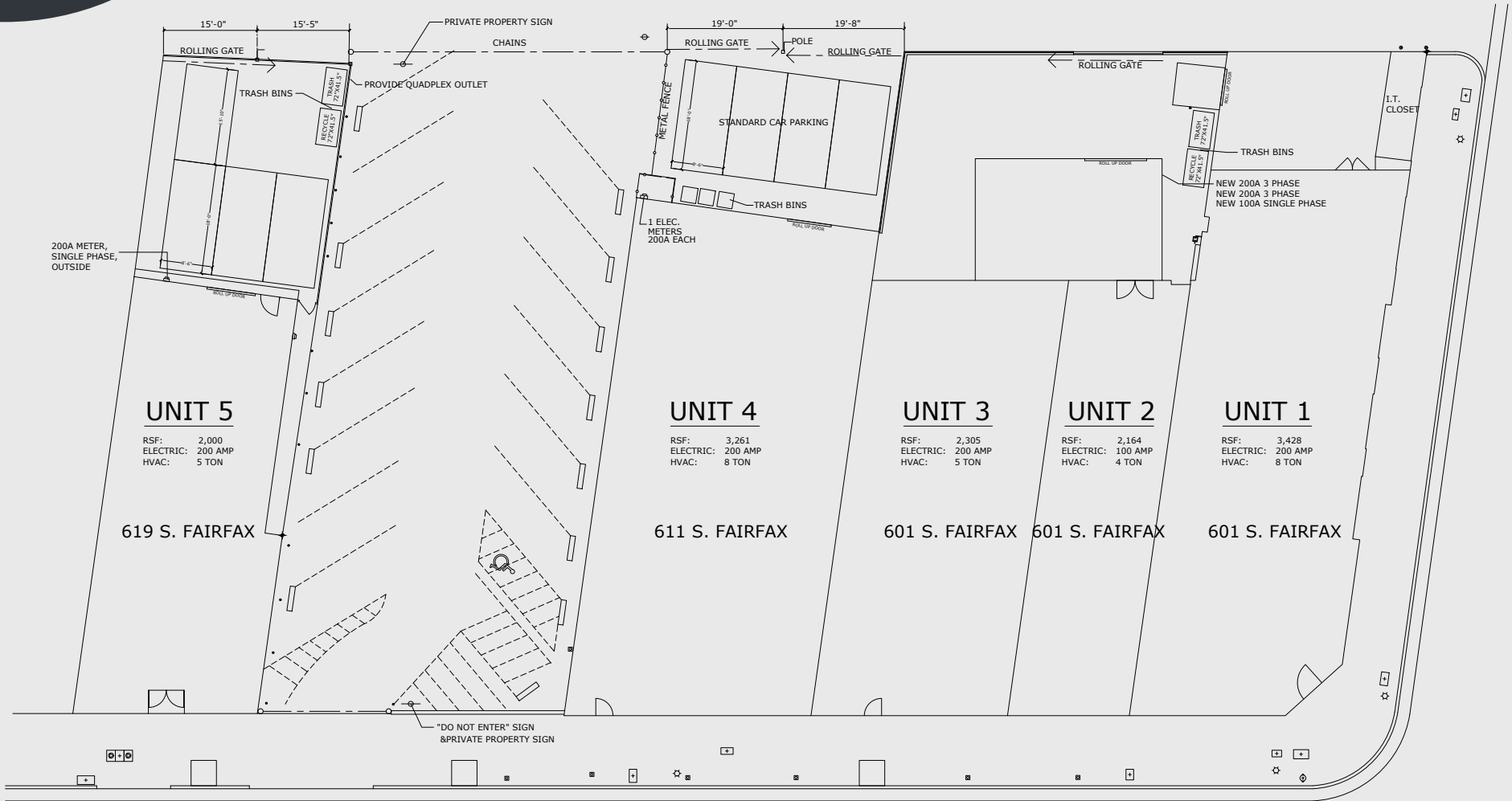
2,164 SF | \$3.95/SF NNN

Unit 1 Photos



3,428 SF | \$4.25/SF NNN

Site Plan



Aerial Map



ACADEMY MUSEUM OF MOTION PICTURES

PETERSEN AUTOMOTIVE MUSEUM

LACMA

WILSHIRE BLVD

Fanny's

W 6TH ST

601 S FAIRFAX AVE

PARK LA BREA

Contact Info

JARED SWEDELSON

Vice President
d: 818-742-1632
m: 818-644-7597
jswedelson@naicapital.com
Cal DRE Lic #02105146

NAI CAPITAL - WEST LOS ANGELES

11835 W. Olympic Blvd., Suite 700E
Los Angeles, CA 90064
d: 310-806-6100
f: 310-806-6101
www.naicapital.com

SIGNAGE



©NAI Capital Commercial, Inc. Content in this document may include AI generated or alerted text, images and/or analysis. No warranty, express or implied, is made as to the accuracy of the information contained herein. This information is submitted subject to errors, omissions, change of price, rental or other conditions, withdrawal without notice, and is subject to any special listing conditions imposed by our principals. Cooperating brokers, buyers, tenants and other parties who receive this document should not rely on it, but should use it as a starting point of analysis, and should independently confirm the accuracy of the information contained herein through a due diligence review of the books, records, files and documents that constitute reliable sources of the information described herein. Unedited images viewable at naicapital.com | Cal DRE Lic #02130474