

6360 Port Road

Groveport, OH

Key Facts

Property type	Industrial space
Building size	434,120 SF
Space available	100,000-434,120 SF



Contact Us

Learn more about this property or schedule a tour by reaching out to our local investment and leasing officer.

Aaron Schmidt

+1 (860) 713-3901

aaron.schmidt@eqtpartners.com

Chris Simons

+1 (330) 697-9131

chris.simons@eqtpartners.com

6360 Port Road

Groveport, OH

BUILDING SPECIFICATIONS

Building Space Available: 434,120 SF

Divisible by 100,000 SF

Total Office Space Available: 15,117 SF

Construction: 1999

Ceiling Clear Height: 29' - 30'-6"

Column Spacing: 52' x 41' with 60' dock bays

Dock Doors: 54 (9' x 10') with 30,000 lbs. levelers

Drive-In Doors: 2 (12' x 14')

Power: 1,200 amp, 277/480 volt, 3-phase

Lighting: 400-watt metal halide high bay lighting

Roof: Single-ply 45 mil EPDM ballasted membrane (15 year warranty)

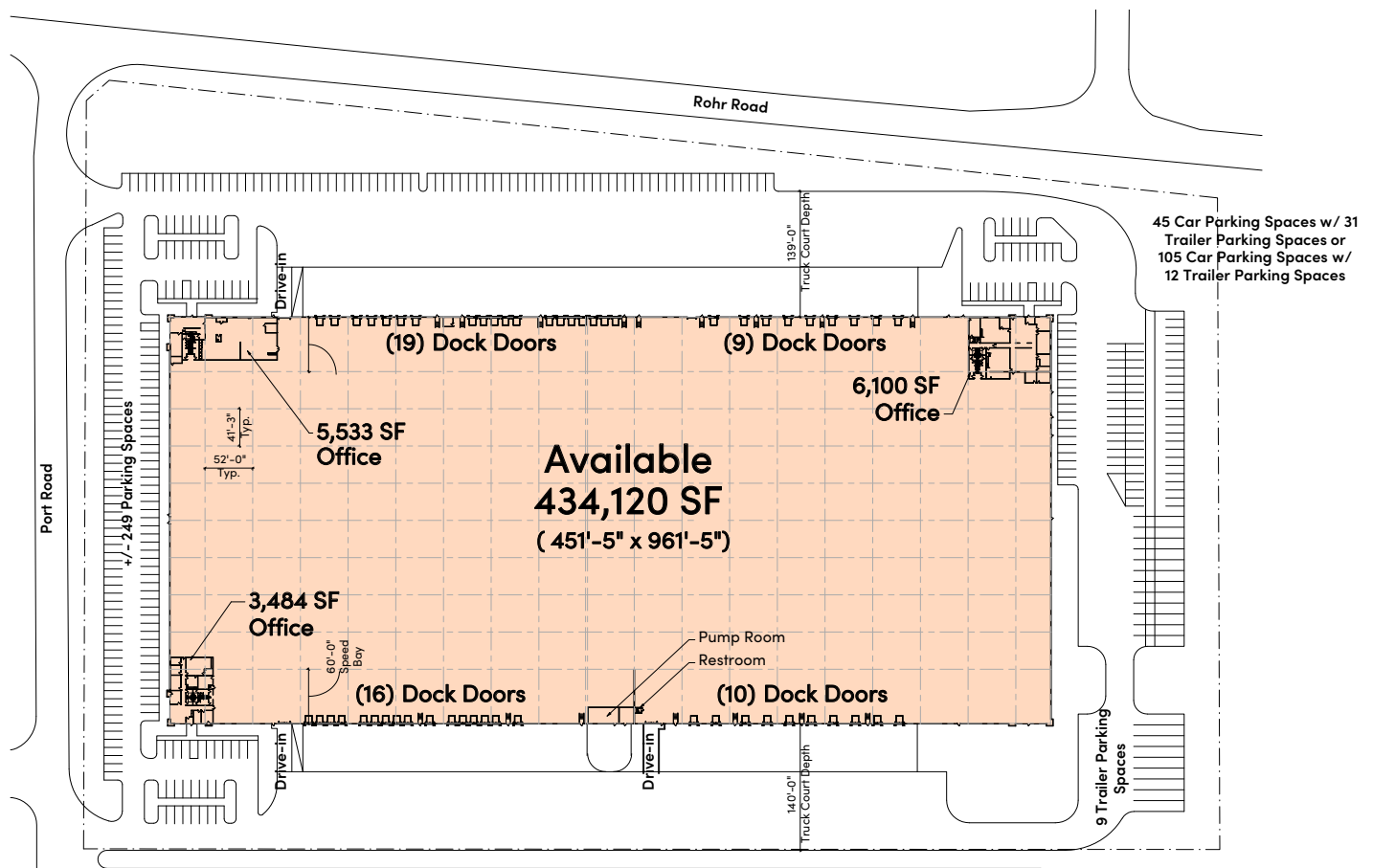
Fire Protection: ESFR sprinkler system

Truck Court: 140' with 60' concrete apron

Car Parking: 265 spaces

Trailer Parking: 47 spaces

Zoned PIP "Planned Industrial Park" in Village of Groveport



Contact Us

Learn more about this property or schedule a tour by reaching out to our local investment and leasing officer.

Aaron Schmidt

+1 (860) 713-3901

aaron.schmidt@eqtpartners.com

Chris Simons

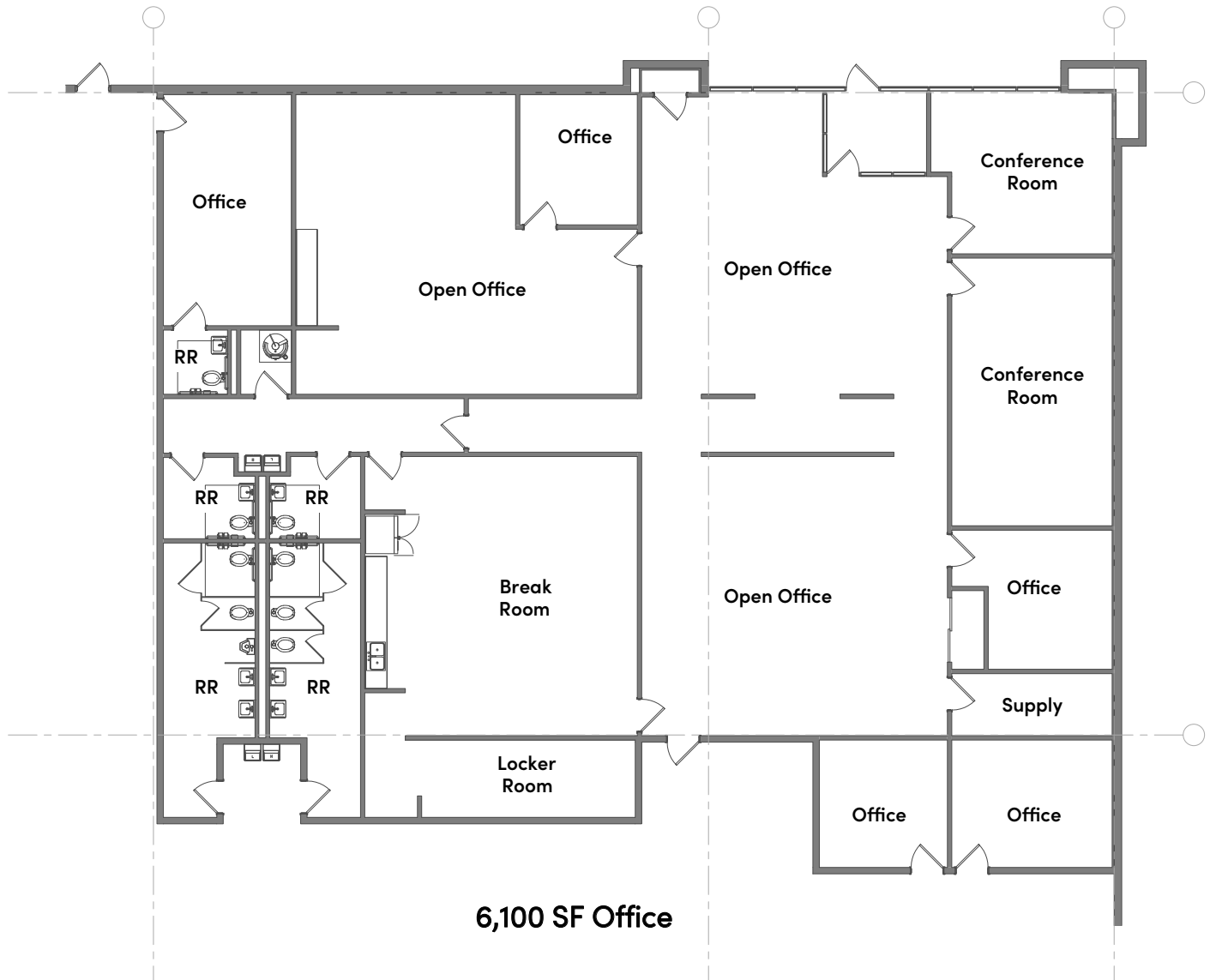
+1 (330) 697-9131

chris.simons@eqtpartners.com

6360 Port Road

Groveport, OH

OFFICE PLAN A - 6,100 SF



Contact Us

Learn more about this property or schedule a tour by reaching out to our local investment and leasing officer.

Aaron Schmidt

+1 (860) 713-3901
aaron.schmidt@eqtpartners.com

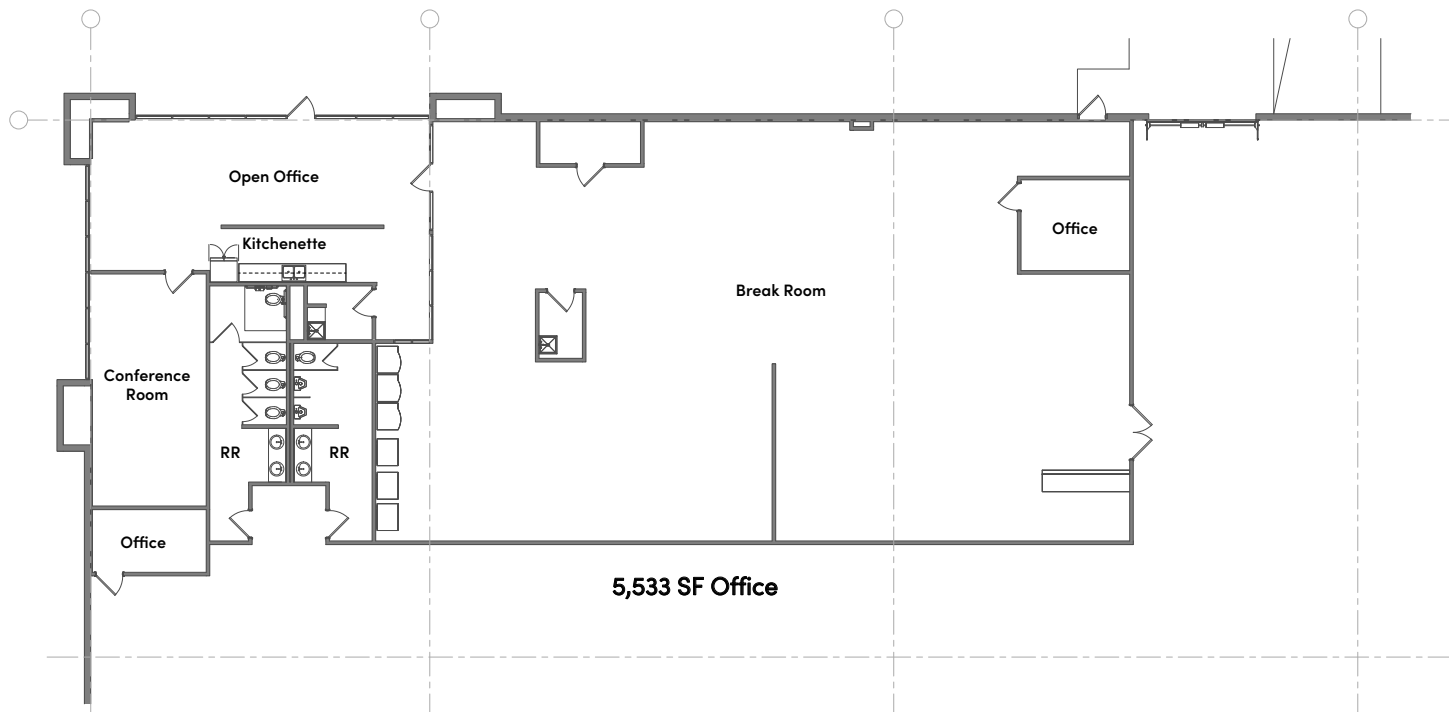
Chris Simons

+1 (330) 697-9131
chris.simons@eqtpartners.com

6360 Port Road

Groveport, OH

OFFICE PLAN B - 5,533 SF



Contact Us

Learn more about this property or schedule a tour by reaching out to our local investment and leasing officer.

Aaron Schmidt

+1 (860) 713-3901

aaron.schmidt@eqtpartners.com

Chris Simons

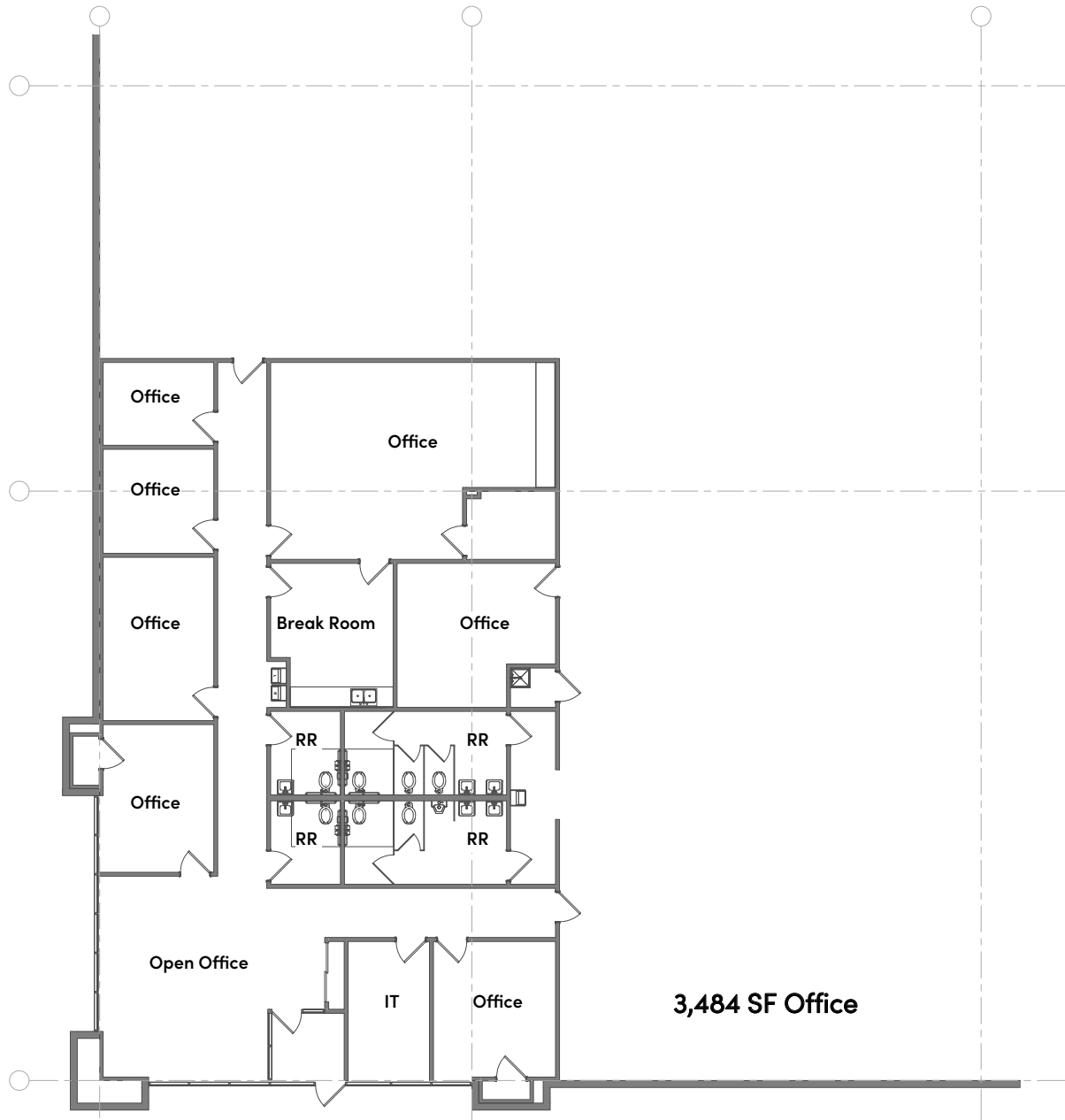
+1 (330) 697-9131

chris.simons@eqtpartners.com

6360 Port Road

Groveport, OH

OFFICE PLAN C - 3,484 SF



Contact Us

Learn more about this property or schedule a tour by reaching out to our local investment and leasing officer.

Aaron Schmidt

+1 (860) 713-3901

aaron.schmidt@eqtpartners.com

Chris Simons

+1 (330) 697-9131

chris.simons@eqtpartners.com

6360 Port Road

Groveport, OH



Contact Us

Learn more about this property or schedule a tour by reaching out to our local investment and leasing officer.

Aaron Schmidt

+1 (860) 713-3901

aaron.schmidt@eqtpartners.com

Chris Simons

+1 (330) 697-9131

chris.simons@eqtpartners.com