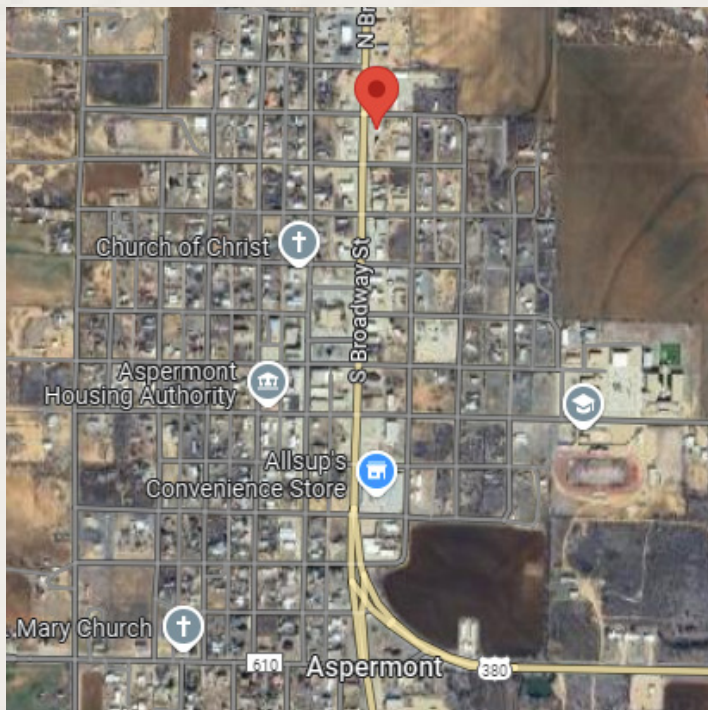


# FOR SALE | 105 S BROADWAY ST & 508 E 9TH ST

AGGREGATE OF 2,272 SF OF IMPROVEMENTS ON HARD CORNER 0.77 AC OF COMMERCIAL LAND



<b>LOCATION:</b>	This property is located at the hard corner of N Broadway St & E 1st St	<b>TOPOGRAPHY:</b>	Flat
<b>SIZE:</b>	Approximately 0.77 Acres	<b>FLOOD HAZARD:</b>	The Property does not reside in the FEMA Floodplain
<b>FRONTAGE/ ACCESS:</b>	Property may be accessed from either N Broadway St or E 1st St	<b>SCHOOL DISTRICT:</b>	Aspermont ISD
<b>UTILITIES:</b>	Water, Sewage & Electricity	<b>JURISDICTION:</b>	City of Aspermont
<b>ZONING:</b>	Commercial	<b>PRICE:</b>	Contact Broker for Pricing
		<b>COMMENTS:</b>	Great opportunity for an investor or user. Property is situated on a hard corner on Broadway St - they primary thoroughfare in Aspermont. Building is currently vacant.

**CONTACT  
FOR PRICING**

**BRYAN MCMURREY**  
Managing Director  
512.314.3971  
bryan.mcmurrey@transwestern.com

**RYE HINKLE**  
Senior Associate  
512.314.5215  
rye.hinkle@transwestern.com