

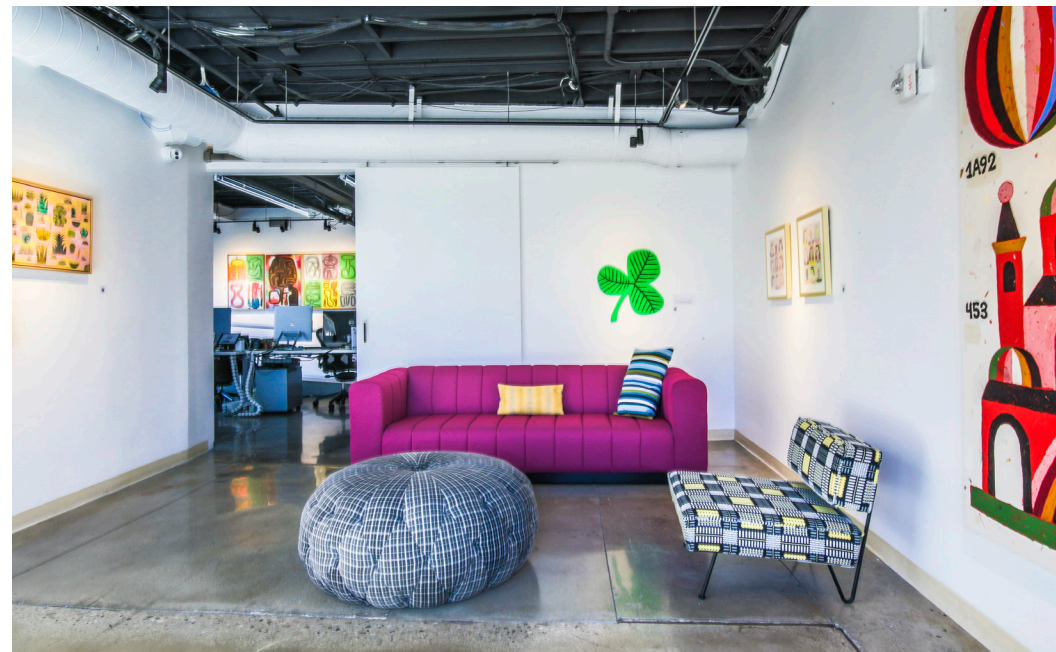


FOR SALE

35-37 E WALNUT ST

A 12,885 SF creative office opportunity in
the heart of Pasadena, CA





35-37 E WALNUT ST



Property Overview

ADDRESS

35-37 E Walnut St
Pasadena, CA 91103

PARCEL NO

5723-001-026,
5723-001-016

BUILDING SIZE

12,885 SF

USE

Creative Office/Studio

PARKING SIZE

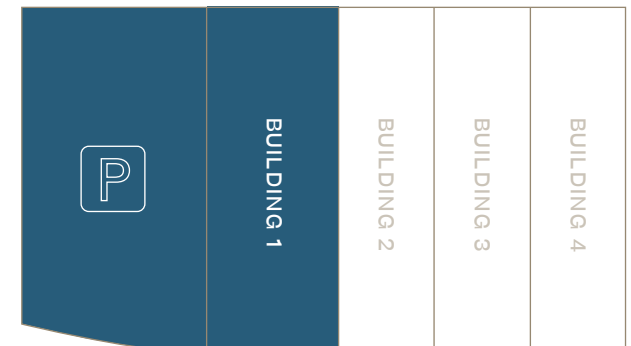
8,918 SF

YEAR BUILT | RENOVATED

1929 | 2017

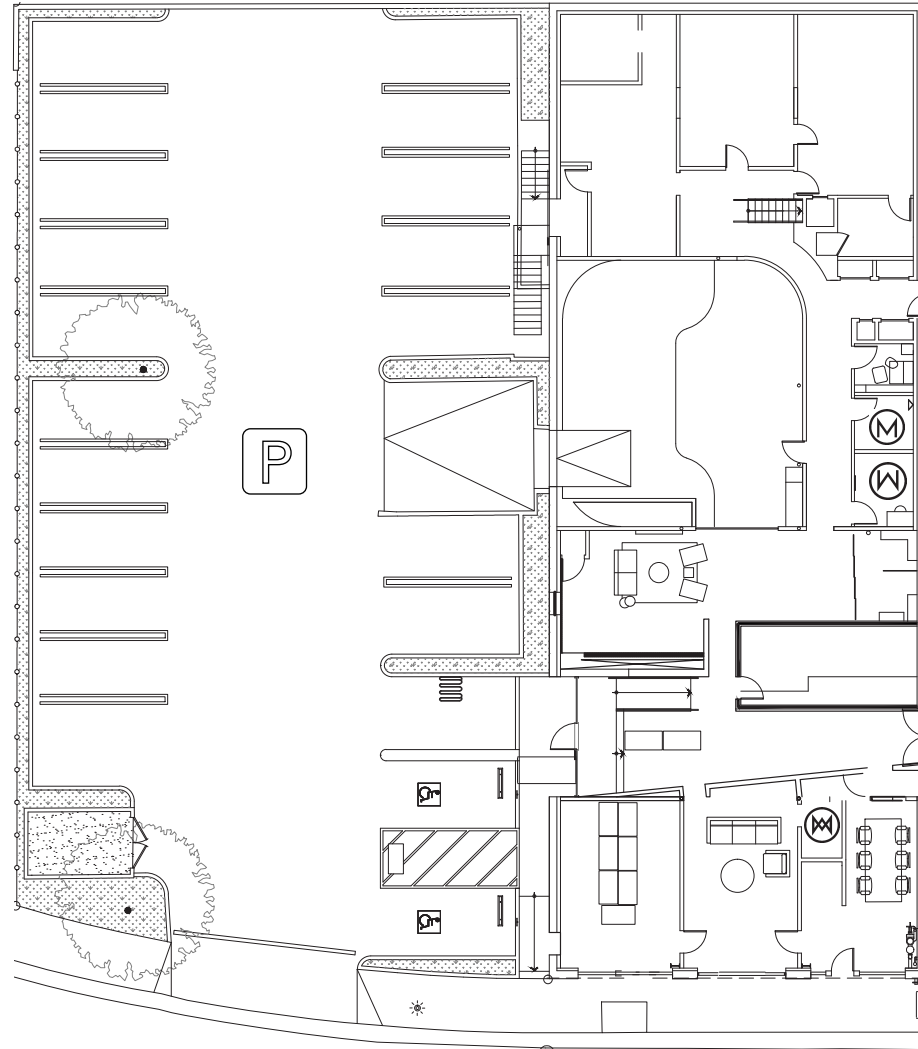
PRICING

Submit Offer



FLOOR PLANS

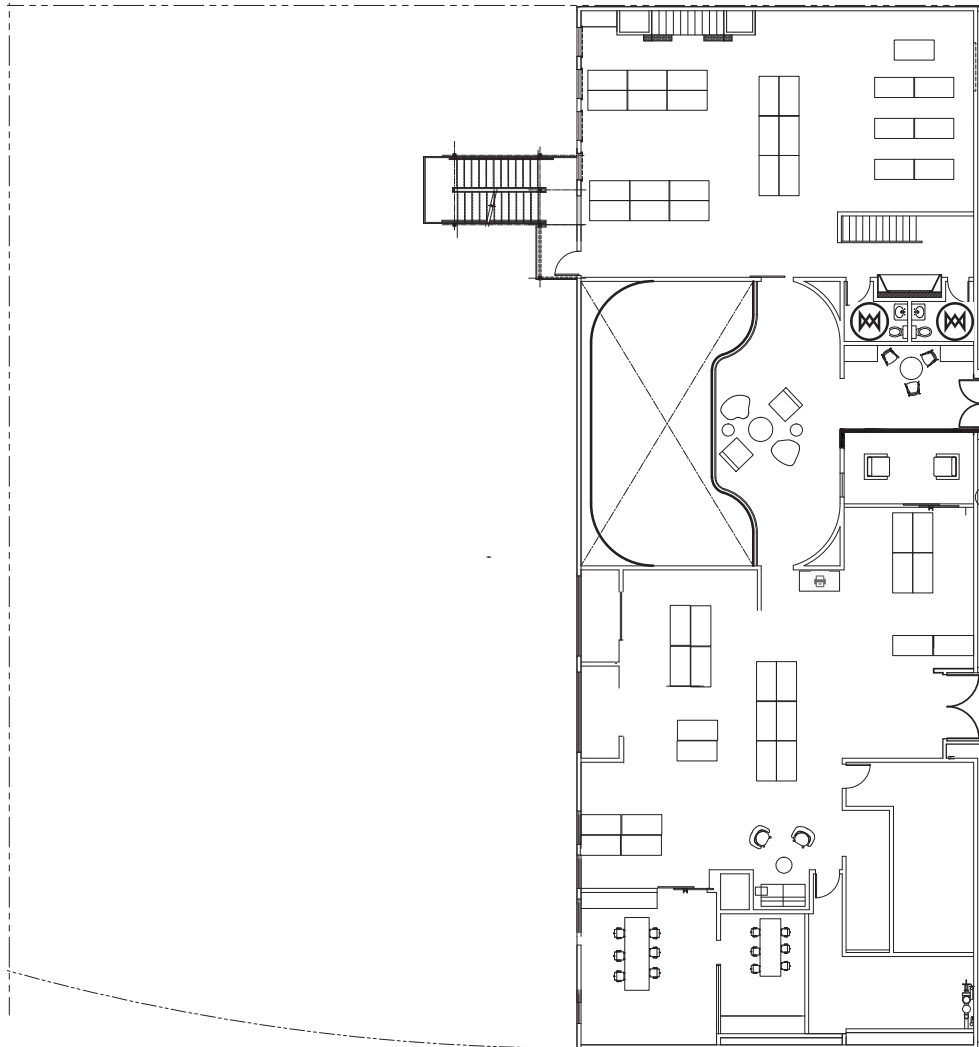
1ST FLOOR



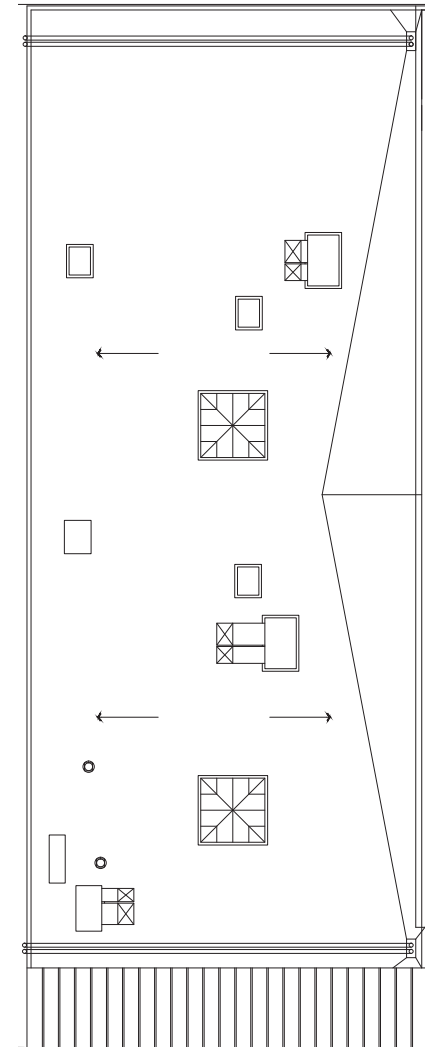
WALNUT AVE

FLOOR PLANS CONT.

2ND FLOOR



ROOFTOP



Exclusively listed by

John Anthony, SIOR

213.225.7218 | john.anthony@kidder.com

LIC N° 01226464

Christopher Steck, CCIM

213.225.7231 | christopher.steck@kidder.com

LIC N° 01841338

KIDDER.COM

Ryan Pettersen

213.279.2885 | rpettersen@cresa.com

LIC N° 01923152

CRESA.COM

This information supplied herein is from sources we deem reliable. It is provided without any representation, warranty, or guarantee, expressed or implied as to its accuracy. Prospective Buyer or Tenant should conduct an independent investigation and verification of all matters deemed to be material, including, but not limited to, statements of income and expenses. Consult your attorney, accountant, or other professional advisor.

