

# Commercial Warehouse with Office Space

0  
BEDS

0.5  
BATHS

\$4,700  
RENT

(610) 868-1996  
www.apex-management.com



## PROPERTY ADDRESS

10 W Goeppe Street - Commercial Warehouse  
Bethlehem, PA 18018

SQUARE FEET: 4,500    AVAILABLE: Now

## DESCRIPTION

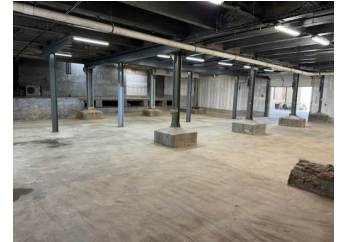
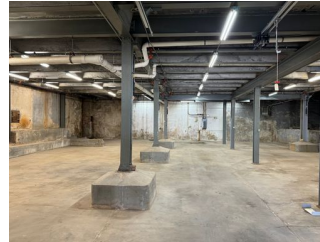
4,500 SF commercial warehouse and adjoining office space is move-in ready. Conveniently located within walking distance to downtown Bethlehem and easily accessible to Route 378. Call 610-868-1996 to schedule a tour.

## AMENITIES

- Downtown Location
- Off Street Parking
- Half Bath

## RENTAL TERMS

Rent	\$4,700
Security Deposit	\$4,700
Application Fee	\$40



View this listing online:

