

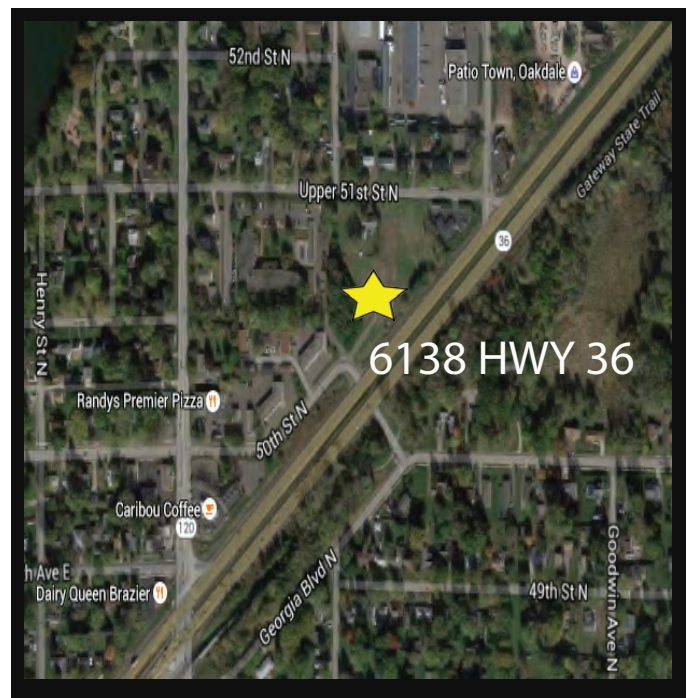
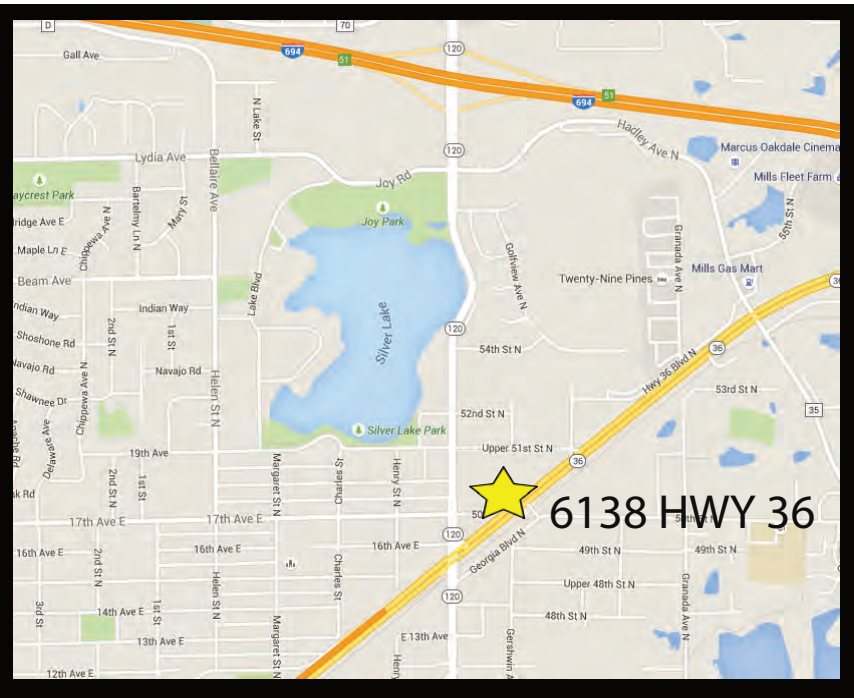


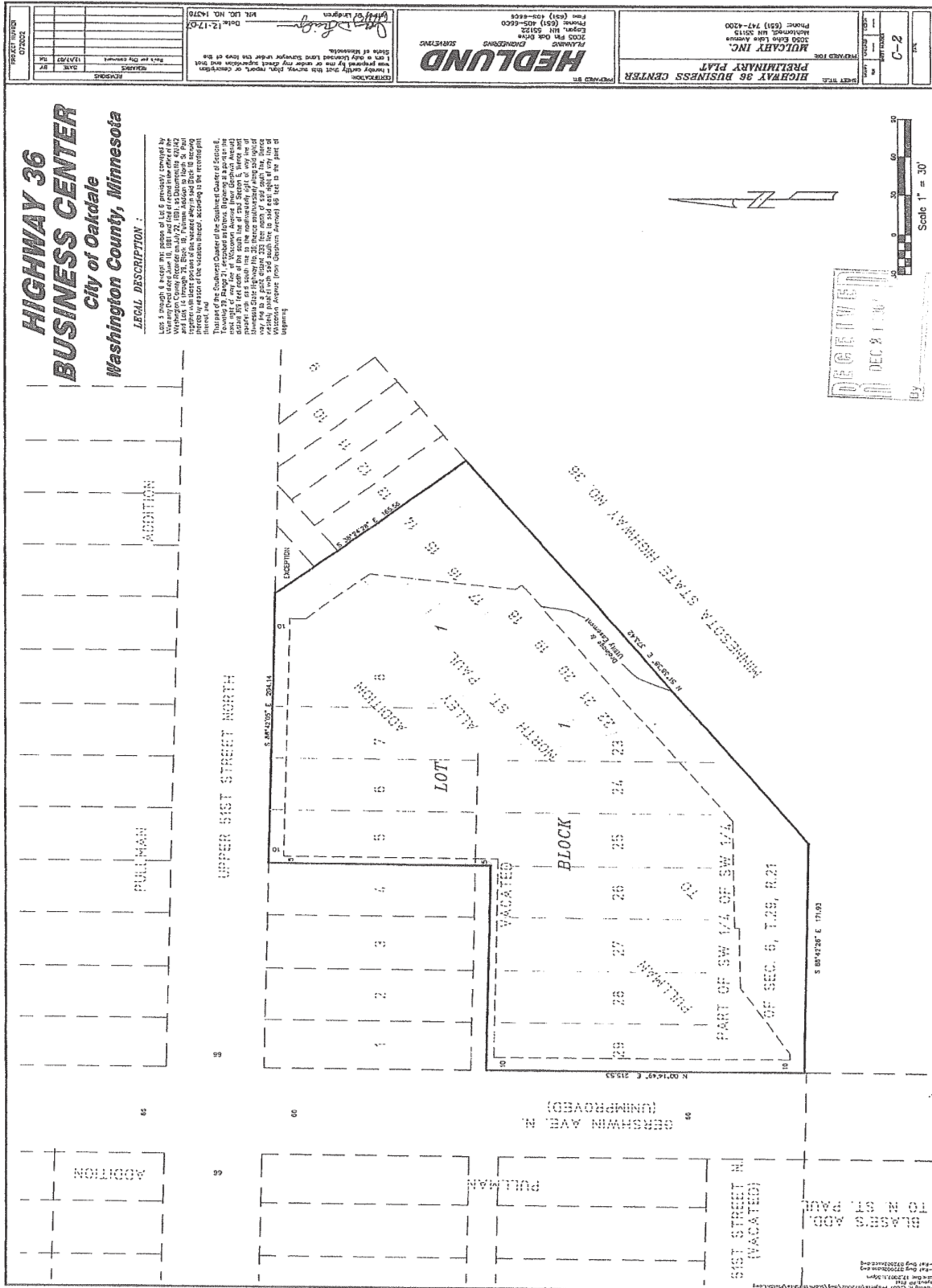
# Excellent Location and Visibility



## Land For Sale

- 2.45 Acres/ 106,700 SF
- 300+ Feet along HWY 36
- Great freeway visibility just West of Fleet Farm
- Between Century Ave and Hadley
- Zoned C-2, as per City of Oakdale Community Commercial Zoning Retail & Service Outlets
- Accessible from 50th Street and Upper 51st Street North
- \$595,000





Information Deemed Reliable But Not Guaranteed

1549 Livingston Ave Suite 105  
West St. Paul, MN 55118

651-450-9669  
www.langercommercial.com