



VERSATILE OFFICE SUITE ON MARTIN WAY



2600 MARTIN WAY E, OLYMPIA, WA | THE ARC PLAZA

LISTING INFORMATION

Functional, mixed-use office building with ample parking and easy access from one of Olympia's most heavily traveled thoroughfares, Martin Way E. It is centrally located among a variety of local retail, office, and service-oriented businesses.

- ▶ Flexible floorplan featuring a waiting area, an open space, two private rooms, a private restroom, and ample storage.

SUITE B: 1,350 SF

\$17.32/SF
MODIFIED GROSS

CBA# 41189720



rants.group/2600MartinWayE_B

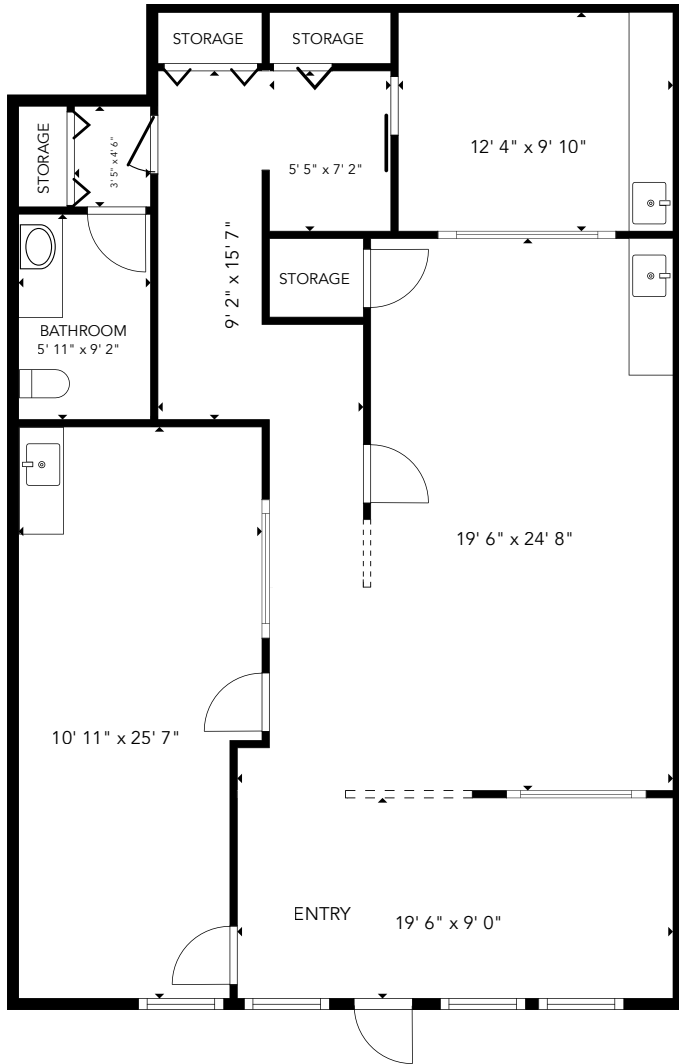
This information, while obtained from sources we deem reliable, is not guaranteed. It is provided without any representation, warranty or guarantee, expressed or implied as to its accuracy. Prospective buyer or tenant should conduct an independent investigation and verification of all matters deemed to be material, including, but not limited to, statements of income and expenses. Consult your attorney, accountant, or other professional advisor.



Carolyn Graden, CCIM
MANAGING BROKER
(360) 763-4994
carolyn@rantsgroup.com

360-943-8060
RANTSGROUP.com

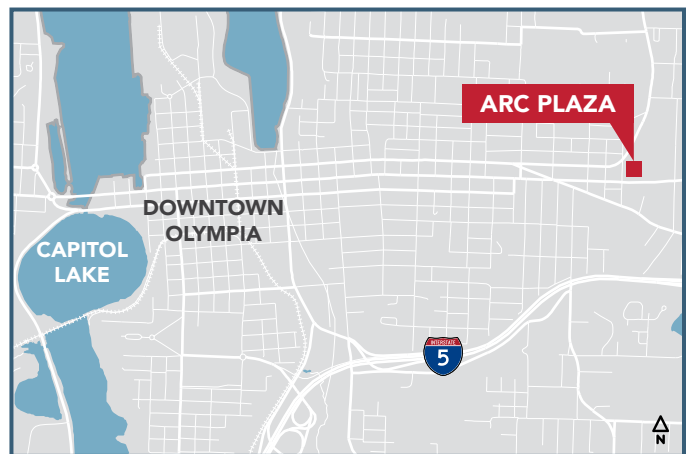
2600 MARTIN WAY E, OLYMPIA, WA | THE ARC PLAZA



FLOOR PLAN



THIS FLOORPLAN IS NOT TO SCALE
SIZES AND DIMENSIONS ARE APPROXIMATE, ACTUAL MAY VARY.



CONTACT

Carolyn Graden, ccim
MANAGING BROKER
(360) 763-4994
carolyn@rantsgroup.com



rantsgroup.com/2600MartinWayE_B

This information, while obtained from sources we deem reliable, is not guaranteed. It is provided without any representation, warranty or guarantee, expressed or implied as to its accuracy. Prospective buyer or tenant should conduct an independent investigation and verification of all matters deemed to be material, including, but not limited to, statements of income and expenses. Consult your attorney, accountant, or other professional advisor.

360-943-8060 | RANTSGROUP.com